

We Jesse R. Barton, bachelor, William J. Barton and Emma J. Barton his wife, Alice R. Barton, owners of the N. E. one fourth (1/4) of the N. one half (1/2) of the S. E. one fourth (1/4) of the S. one fourth (1/4) of section eleven (11) township N. 20. twenty-eight (28) north of range N. 20. twenty-three (23) west, do hereby certify that we have caused the same to be surveyed and platted into blocks, lots, streets and alleys under the title of Barton's Addition to the city of St. Paul as represented on this map, to the end that the same may be recorded as the law directs, and we do hereby give and dedicate to public and for public use forever all the streets and alleys represented on the said map.

Witness our hands and seals this \_\_\_\_\_ day of \_\_\_\_\_ A.D. 1884 executed in presence of  
 Jesse R. Barton  
 William J. Barton  
 Emma J. Barton  
 Alice R. Barton

Notary Public, Ramsey County, Minn. } S. S.

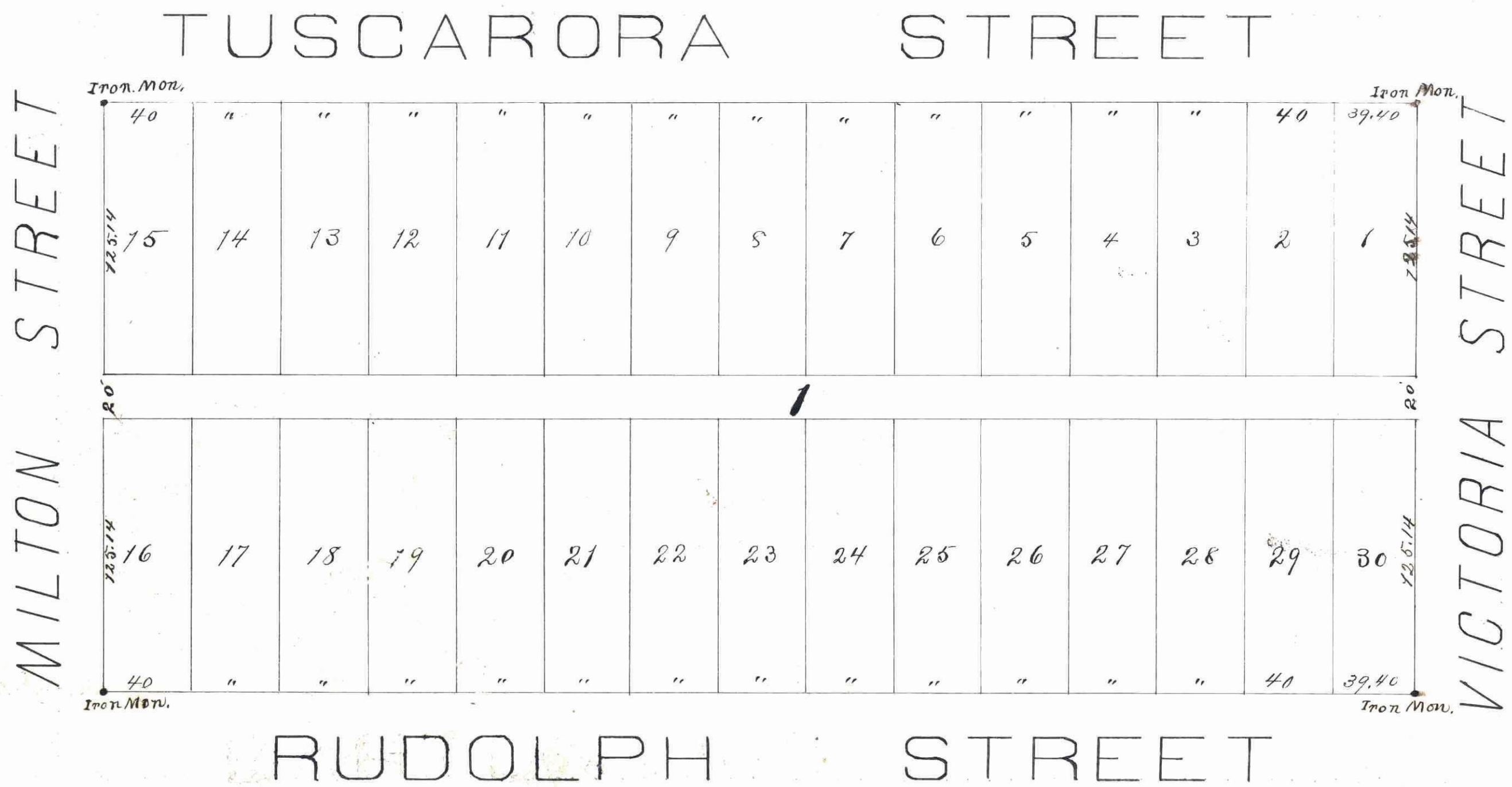
I Otto Kueffner a notary public in and for said county of Ramsey do hereby certify that on this day personally came before me Jesse R. Barton William J. Barton and Emma J. Barton his wife and Alice R. Barton to me known to be the persons described in and who executed the foregoing certificate and acknowledged having executed the same freely and for the purposes therein expressed.

witness my hand and notarial seal this 14<sup>th</sup> day of April A.D. 1884  
 Otto Kueffner  
 Notary Public,  
 Ramsey County, Minn.

# BARTON'S ADDITION

TO THE  
 CITY OF ST. PAUL

Scale 50ft. = 1 Inch.



STATE OF MINNESOTA, ss.  
 County of Ramsey, ss.  
 OFFICE OF THE REGISTER OF DEEDS.  
 This is to certify that the within instrument was filed for Record in this office, at St. Paul, on the 23<sup>rd</sup> day of April A. D. 1884 at 2 o'clock P. M., and that the same was duly recorded in Book 4 of Plats pages 22.  
 A. C. Miles  
 Register of Deeds.  
 By J. L. ... Deputy.

This plat document is an UNOFFICIAL copy of a Subdivision Plat or Registered Land Survey and is made available for information purposes only.  
 To obtain an official copy please contact the Ramsey County Recorder's Office.

I do hereby certify to having surveyed and platted the within described property and that the same is correct.

F. E. Simas  
 civil engineer

State of Minnesota, County of Ramsey, ss. I know that on this 14<sup>th</sup> day of April, 1884, personally came before me F. E. Simas known to me, to be the same person who signed the foregoing certificate, and he acknowledged that he signed and executed the same freely and voluntarily.  
 Witness my hand and notarial seal, the day and year first above written.

Otto Kueffner  
 Notary Public, Ramsey County, Minn.

Approved St. Paul 14<sup>th</sup> day of April A.D. 1884  
 S. P. Tolson  
 J. W. Starkley. } Real Commission

Examined and approved April 15<sup>th</sup>, 1884.

CITY TREASURER'S OFFICE  
 ST. PAUL, MINN.  
 APR 15 1884  
 ASSESSMENTS PAID  
 J. W. Starkley  
 City Engineer.

CITY TREASURER'S OFFICE  
 ST. PAUL, MINN.  
 ASSESSMENTS PAID  
 J. W. Starkley  
 City Engineer.

Taxes paid and transferred  
 on 23<sup>rd</sup> Sept 1884  
 Jas O'Brien  
 County Auditor

Accepted by Council - Council  
 Chas. P. ... April 15, 1884

J. W. Starkley  
 City Engineer

22