

AUERBACH & HANDS

ADDITION

TO THE
CITY OF ST. PAUL.

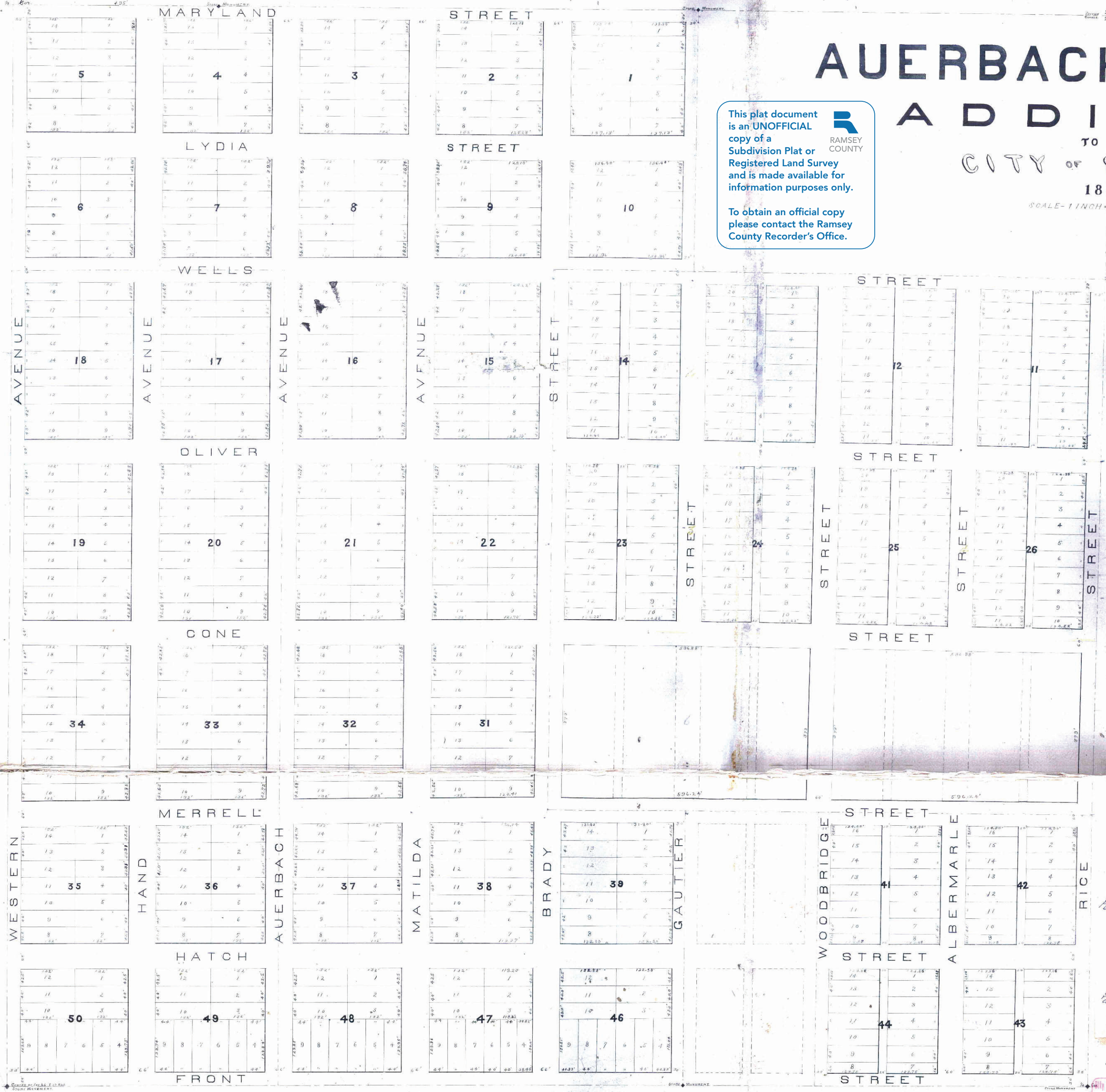
1882.

SCALE - 1 INCH = 100 FEET.

This plat document is an UNOFFICIAL copy of a Subdivision Plat or Registered Land Survey and is made available for information purposes only.

RAMSEY COUNTY

To obtain an official copy please contact the Ramsey County Recorder's Office.



We Maurice Auerbach and Matilda B. Auerbach, his wife, Daniel W. Hand, his wife, Lydia H. Hand, his wife, William Dawson and Mary B. Dawson, his wife, Robert A. Weide, his wife, and Mark Costello, bachelor, all of the City of St. Paul, County of Ramsey and State of Minnesota, do hereby certify that we are the owners of the following described property, to-wit: all of the N.E. 1/4 Sec. 25, T. 29 N., R. 23 W., S.E. 1/4 of the N.E. 1/4 Sec. 25, T. 29 N., R. 23 W., except the S.E. 1/4 of the N.E. 1/4 Sec. 25, T. 29 N., R. 23 W., and the S.E. 1/4 of the N.E. 1/4 Sec. 25, T. 29 N., R. 23 W., and that we have caused the same to be surveyed and plotted as shown by the within map, and that we do add the same to the public use forever, all the streets and alleys as shown by the within map.

In testimony whereof we do hereby set our hands and seals this fifth day of September, A.D. 1882.

Maurice Auerbach
Daniel W. Hand
Robert A. Weide
Mark Costello
Matilda B. Auerbach
Lydia H. Hand
William Dawson
Mary B. Dawson

In presence of
Gordon S. Siebel
Gates A. Johnson
Notary Public

I, Gordon S. Siebel, a Notary Public within and for said County of Ramsey do hereby certify that on this day per Maurice Auerbach, his wife, Daniel W. Hand, his wife, Lydia H. Hand, his wife, William Dawson and Mary B. Dawson, his wife, Robert A. Weide and Mark Costello, bachelor, to me known to be the persons described in and who executed the foregoing certificate, and who acknowledged having executed the same freely and for the purposes therein expressed.

Witness my hand and notarial seal this fifth day of September, A.D. 1882.

Gordon S. Siebel
Notary Public.

We the undersigned hereby certify to having surveyed and plotted the above described property and that the same is correct, and to having placed stone monuments as shown by the within map, for reference points for future surveys.

Gates A. Johnson
City Engineer.

I hereby certify that I have examined the within plat and recommend its approval.

L. W. Randall
City Engineer.

Approved: St. Paul 19th day of September, A.D. 1882.

J. P. Johnson
Plat Commission.

State of Minnesota }
County of Ramsey }
I, W. P. Murray, Notary Public, do hereby certify that I have examined the above described plat and recommend its approval.

W. P. Murray
Notary Public.

That part of this plat bordered by the outside lines of Bond & Rydberg adds that part bordered by the outside lines to Blocks 1, 2, 3 & 4 of Cone Rydberg Addition.

Gates A. Johnson
City Engineer.

Accepted by Common Council
September 19, 1882

W. P. Murray
City Clerk.