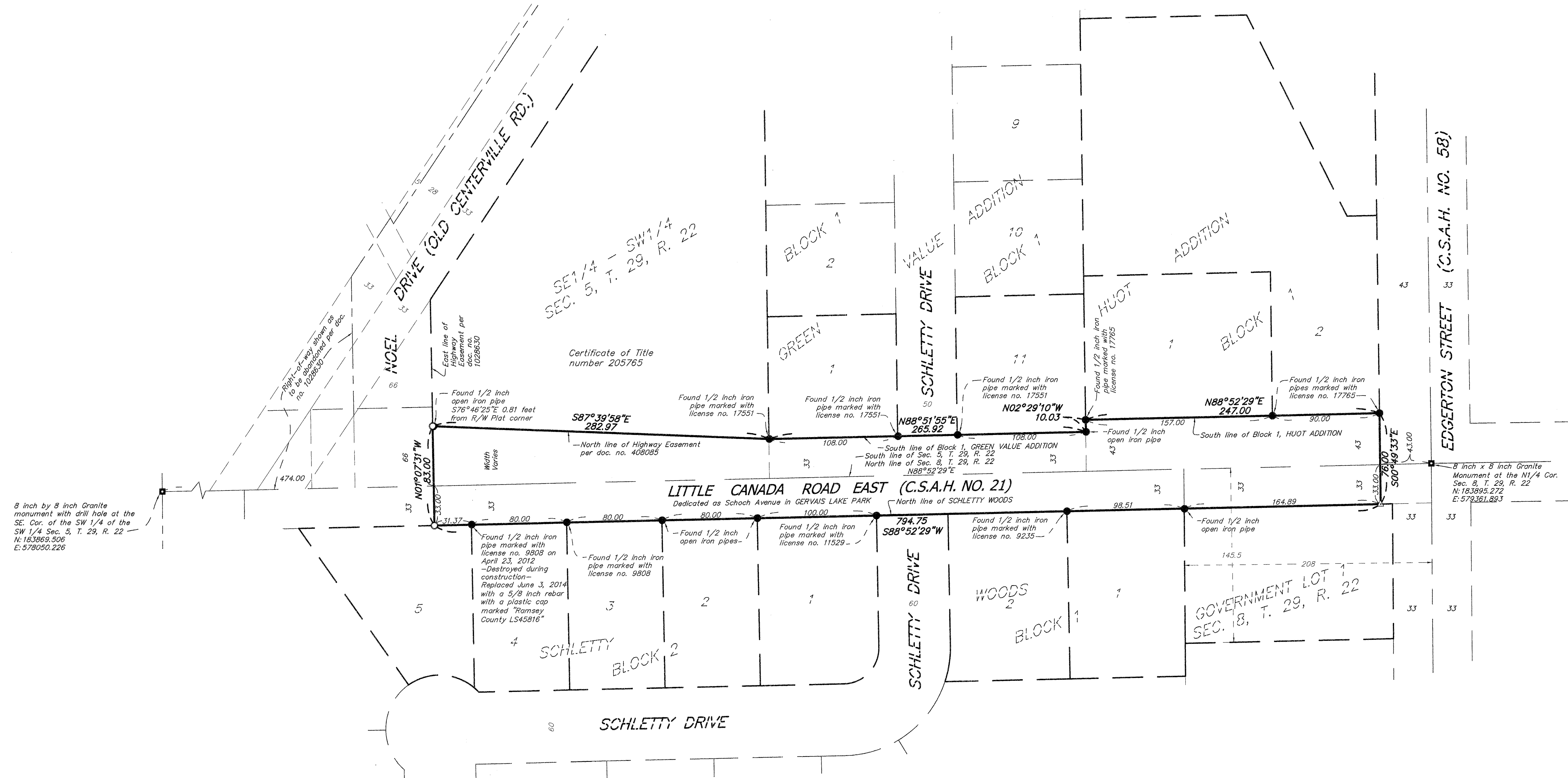


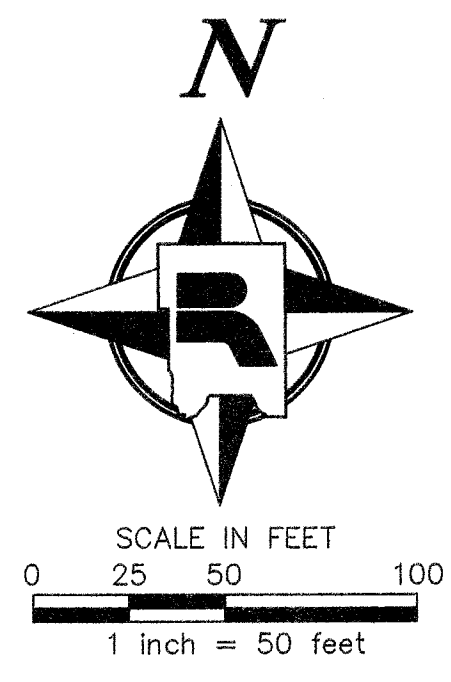
# RAMSEY COUNTY HIGHWAY RIGHT OF WAY PLAT NO. 4 - C.S.A.H. 21

## LITTLE CANADA ROAD EAST



8 inch by 8 inch Granite monument with drill hole at the SE. Cor. of the SW 1/4 of the SW 1/4 Sec. 5, T. 29, R. 22 N: 183069.506 E: 578050.226

8 inch x 8 inch Granite Monument at the N 1/4 Cor. Sec. 8, T. 29, R. 22 N: 183895.272 E: 578361.893



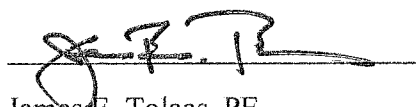
### LEGEND

- Denotes a set 5/8 inch by 14 inch iron rebar with a 2 inch aluminum cap stamped "RAMSEY COUNTY R/W LS 45816."
- Denotes found monument (size, type and/or Land Surveyor identification described on graphics).
- Denotes a stone monument more specifically described on graphics.
- △ Denotes a P.K. nail with a washer stamped "Ramsey County - LS 45816"

### NOTES

The bearings and distances shown on this plat are based on the Ramsey County Coordinate System NAD83 (1986 adj.).  
For details concerning this plat contact the Ramsey County Surveyors Office.

Pursuant to Resolution No. B2015-096 of the Board of Commissioners for Ramsey County, Minnesota, and Minnesota Statutes, Section 160.14, Subdivision 1, I hereby certify that this plat is adopted for the establishment of existing highway right-of-way, and that this is the official plat of that portion of County State Aid Highway 21 as shown hereon being located within Sections 5 and 8, Township 29 North, Range 22 West, Ramsey County, Minnesota.

  
James E. Tolaas, PE  
Ramsey County Public Works Director / County Engineer  
Minnesota License No. 16159

Date: 7/21/15

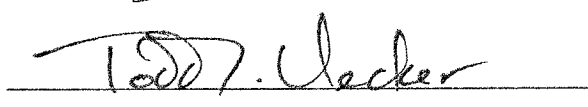
I hereby certify that this plat was prepared by me or under my direct supervision and that I am a duly Licensed Land Surveyor under the laws of the State of Minnesota; that this plat meets the requirements of Minnesota Statutes, Chapter 160.14, Subdivision 1; that all monuments shown on the plat have been correctly placed in the ground; that all measurements are correctly shown on this plat; and that all right of way boundary lines are correctly designated on this plat.

  
Daniel D. Baar, LS  
Deputy Ramsey County Surveyor  
Minnesota License No. 45816

Date: 7/21/15

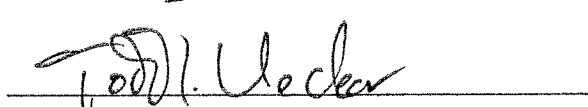
County Recorder, County of Ramsey, State of Minnesota

I hereby certify that this plat of RAMSEY COUNTY HIGHWAY RIGHT OF WAY PLAT NO. 4 - C.S.A.H. 21 - LITTLE CANADA ROAD EAST was filed in the office of the County Recorder for public record on this 23<sup>rd</sup> day of July, 2015, at 11 o'clock A.M. as Document Number 4568079.

  
Deputy County Recorder

Registrar of Titles, County of Ramsey, State of Minnesota

I hereby certify that this plat of RAMSEY COUNTY HIGHWAY RIGHT OF WAY PLAT NO. 4 - C.S.A.H. 21 - LITTLE CANADA ROAD EAST was filed in the office of the Registrar of Titles for public record on this 23<sup>rd</sup> day of July, 2015, at 11 o'clock A.M. as Document Number 2536257.

  
Deputy Registrar of Titles