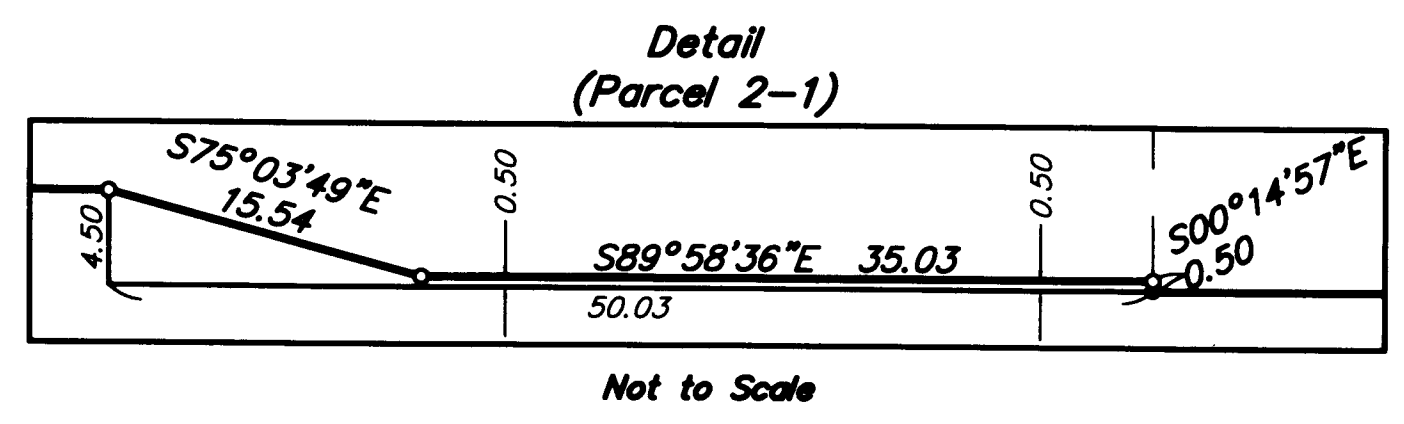
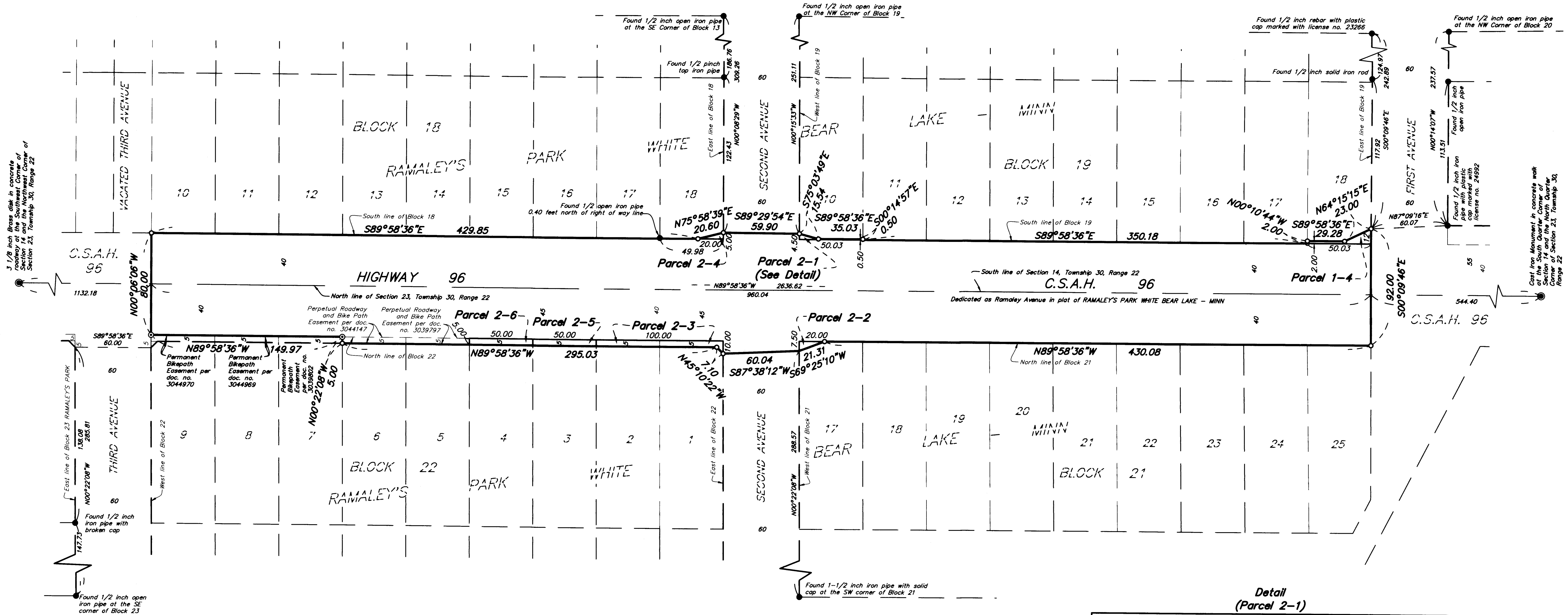


# RAMSEY COUNTY HIGHWAY RIGHT OF WAY PLAT NO. 10 - C.S.A.H. 96 - HIGHWAY 96



RIGHT OF WAY IN SECTIONS 14 and 23, T 30 N - R 22 W							
PARCEL	RECORDED OWNER	LOCATION	TOTAL HIGHWAY R/W* (SQ. FT.)	NEW HIGHWAY R/W (SQ. FT.)	CERTIFICATE OF TITLE NUMBER	RECORDED DOCUMENT NUMBER OR BOOK/PAGE	PARCEL IDENTIFICATION NUMBER
1-4	Margaret Ann Race	Lot 18, Block 19 RAMALEY'S PARK**	4000	204		3438092	14-30-22-34-0137
2-1	LaDonna K. Seely	Lot 10, Block 19 RAMALEY'S PARK**	2000	55	529190		14-30-22-34-0131
2-2	White Bear Cemetery Association, Inc.	Lot 17, Block 21 RAMALEY'S PARK**	2000	75	78825		23-30-22-21-0101
2-3	Jeffrey A. Engler and Barbara M. Engler	Lots 1 and 2, Block 21 RAMALEY'S PARK**	4000	513	595332		23-30-22-21-0079
2-4	James R. Prazak and Cara A. Malat	Lot 18, Block 18 RAMALEY'S PARK**	2000	50	609995		14-30-22-34-0130
2-5	Aamen H. Hogelsoy	Lot 3, Block 22 RAMALEY'S PARK**	2000	250	590909		23-30-22-21-0092
2-6	Steve Houle and Jeffrey W. Houle	Lot 4, Block 22 RAMALEY'S PARK**	2000	250		4336523	23-30-22-21-0093

\*As dedicated on the plat of RAMALEY'S PARK WHITE BEAR LAKE - MINN  
 \*\*RAMALEY'S PARK WHITE BEAR LAKE - MINN

### NOTES

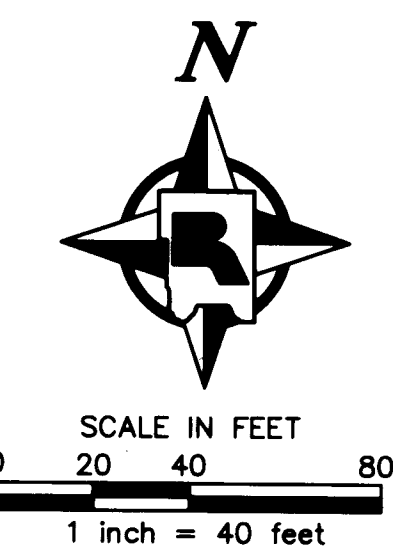
The listing of recorded owners in the parcel tables was created from current deeds of record provided in the form of a "Property Report" by Land Title Inc dated 11-17-16.

The bearings and distances shown on this plat are based on the Ramsey County Coordinate System NAD83 (2011 Adj.). The north line of Section 23, Township 30 Range 22 is assumed to bear N89°58'36"W.

For details concerning this plat contact the Ramsey County Surveyors Office.

### LEGEND

- Denotes a set 5/8 inch by 14 inch iron rebar with a 2 inch aluminum cap stamped "RAMSEY COUNTY R/W LS 45816."
- ⊙ Denotes a P.K nail with a washer stamped "Ramsey County - LS 45816"
- Denotes Ramsey County cast iron monument, unless otherwise noted on graphics.
- Denotes found monument (size, type and Land Surveyor identification described on graphics).



Pursuant to Resolution No. B2017-039 of the Board of Commissioners for Ramsey County, Minnesota, and Minnesota Statutes, Chapter 160.085 and Chapter 160.14, Subdivision 1, I hereby certify that this plat is adopted to facilitate the acquisition and establishment of right of way for highway purposes, and that this is the official plat of that portion of County State Aid Highway 96 as shown hereon being located within Sections 14 and 23, Township 30 North, Range 22 West, Ramsey County, Minnesota.

Date: 3/31/17

James E. Tolaas, PE  
 Ramsey County Public Works Director / County Engineer  
 Minnesota License No. 16159

I hereby certify that this plat was prepared by me or under my direct supervision and that I am a duly Licensed Land Surveyor under the laws of the State of Minnesota; that this plat meets the requirements of Minnesota Statutes, Chapter 160.085 and Chapter 160.140, Subdivision 1; that all monuments shown on the plat have been correctly placed in the ground; that all measurements are correctly shown on this plat; and that all right of way boundary lines are correctly designated on this plat.

Date: 3-31-17

Daniel D. Baar, LS  
 Deputy Ramsey County Surveyor  
 Minnesota License No. 45816

County Recorder, County of Ramsey, State of Minnesota

I hereby certify that this plat of RAMSEY COUNTY HIGHWAY RIGHT OF WAY PLAT NO. 10 - C.S.A.H. 96 ~ HIGHWAY 96 was filed in the office of the County Recorder for public record on this 7 day of April, 2017, at 1 o'clock P.M. as Document Number 4652912.

Deputy County Recorder

Registrar of Titles, County of Ramsey, State of Minnesota

I hereby certify that this plat of RAMSEY COUNTY HIGHWAY RIGHT OF WAY PLAT NO. 10 - C.S.A.H. 96 ~ HIGHWAY 96 was filed in the office of the Registrar of Titles for public record on this 7 day of April, 2017, at 1 o'clock P.M. as Document Number 2584703.

Deputy Registrar of Titles