

MIDLAND LEGACY ESTATE 3RD ADDITION

KNOW ALL PERSONS BY THESE PRESENTS: That Integrity Land Development, Inc., a Minnesota corporation, owner of the following described property situated in the City of Roseville, County of Ramsey, State of Minnesota:

The West 396 feet of Lot 3 and 4, Block 3, Todd's Outlots, Ramsey County, Minnesota.

AND

The South 11 feet of the West 287 feet of the North 128.8 feet of the South 193.2 feet and the West 300 feet of the South 64.4 feet, front and rear of Lot 2, Block 3, Todd's Outlots.

Has caused the same to be surveyed and platted as MIDLAND LEGACY ESTATE 3RD ADDITION and does hereby dedicate to the public for public use forever the public way and the easements for drainage and utility purposes only as shown on this plat and do hereby donate to the City of Roseville the park as shown on this plat.

In witness whereof said Integrity Land Development, Inc., a Minnesota corporation, has caused these presents to be signed by its proper officer this 1st day of April, 2022.

Signed: Integrity Land Development, Inc., a Minnesota corporation
Todd D. Ganz, president
Todd D. Ganz

STATE OF Minnesota
COUNTY OF Washington
The foregoing instrument was acknowledged before me this 1st day of April, 2022 by Todd D. Ganz, president of Integrity Land Development, Inc., a Minnesota corporation, on behalf of the corporation.

Connie J. P. Villari, CONNIE J. P. VILLARI
Notary Public, Dakota County, Minnesota
My Commission Expires Jan. 31, 2023

I, Daniel L. Thurmes, do hereby certify that I have surveyed or directly supervised the survey of the property described on this plat; prepared this plat or directly supervised the preparation of this plat; that this plat is a correct representation of the boundary survey; that all mathematical data and labels are correctly designated on this plat; that all monuments depicted on this plat have been correctly set; that all monuments indicated on this plat will be correctly set within one year; that all water boundaries and wet lands, as defined in Minnesota Statutes, Section 505.01, Subd. 3, as of the date of this surveyor's certification are shown and labeled on this plat; and all public ways are shown and labeled on this plat.

Dated this 1st day of April, 2022

D. L. Thurmes
Daniel L. Thurmes, Land Surveyor
Minnesota License No. 25718

STATE OF MINNESOTA
COUNTY OF Washington
The foregoing instrument was acknowledged before me this 1st day of April, 2022 by Daniel L. Thurmes, Licensed Land Surveyor.

Connie J. P. Villari, CONNIE J. P. VILLARI
Notary Public, Dakota County, Minnesota
My Commission Expires Jan. 31, 2023

CITY OF ROSEVILLE
We do hereby certify that on the 21st day of March, 2022, the City Council of the City of ROSEVILLE, Minnesota, approved this plat.

Chris, Mayor [Signature], Clerk

PROPERTY TAX, RECORDS, AND ELECTION SERVICES DEPARTMENT
Pursuant to Minnesota Statutes, Section 505.021, Subd. 9, taxes payable in the year 2022 on the land hereinbefore described have been paid. Also, pursuant to Minnesota Statutes, Section 272.12, there are no delinquent taxes and transfer entered this 1st day of April, 2022.

Heather L. Bestler, Ramsey County Auditor/Treasurer

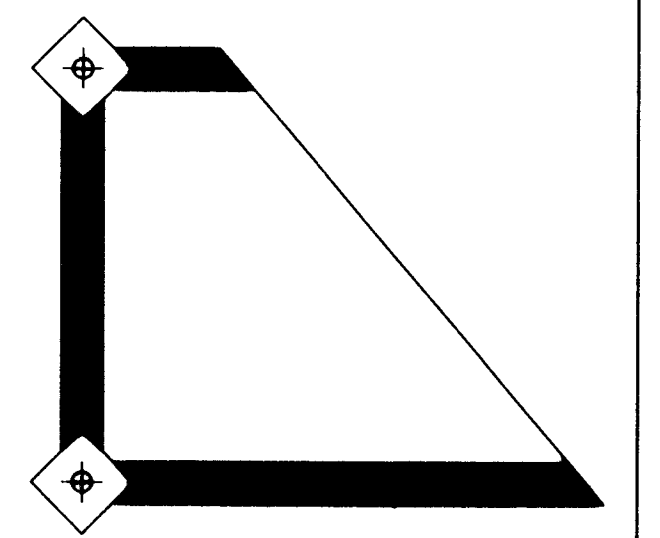
By _____, Deputy

COUNTY SURVEYOR
Pursuant to Minnesota Statutes, Section 383A.42, this plat is approved this 14th day of APRIL, 2022

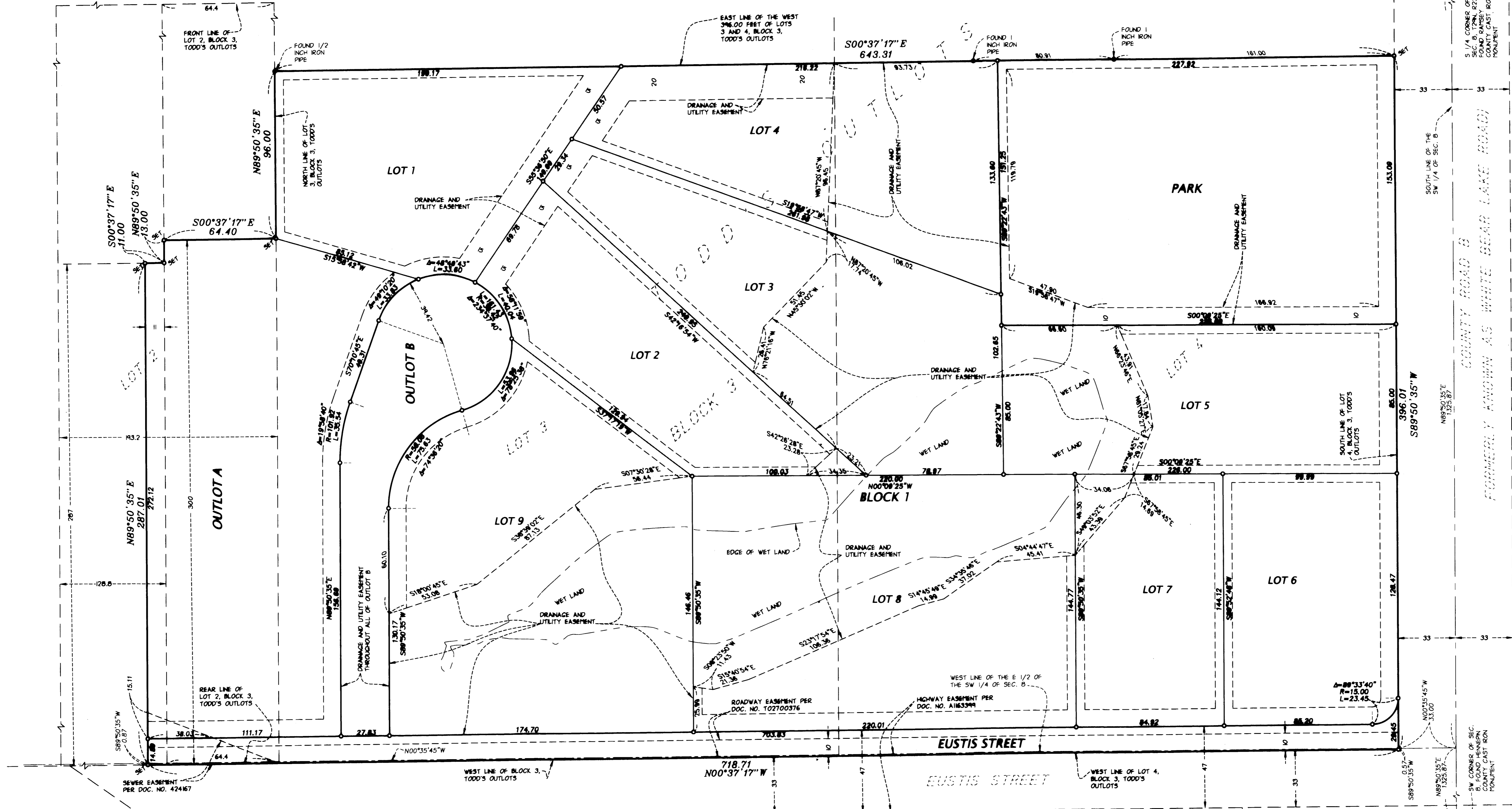
DANIEL D. BAAR
Daniel D. Baar
Ramsey County Surveyor
BY: Stephane J. Robert
STEPHANE J. ROBERT
DEPUTY COUNTY SURVEYOR

REGISTRAR OF TITLES, County of Ramsey, State of Minnesota
I hereby certify that this plat of MIDLAND LEGACY ESTATE 3RD ADDITION was filed in the office of the Registrar of Titles for public record on this 18th day of April, 2022, at 10:00 o'clock A.M. and was duly filed in Book 53 of Plats, Pages 21 and 22, as Document Number 2730997.

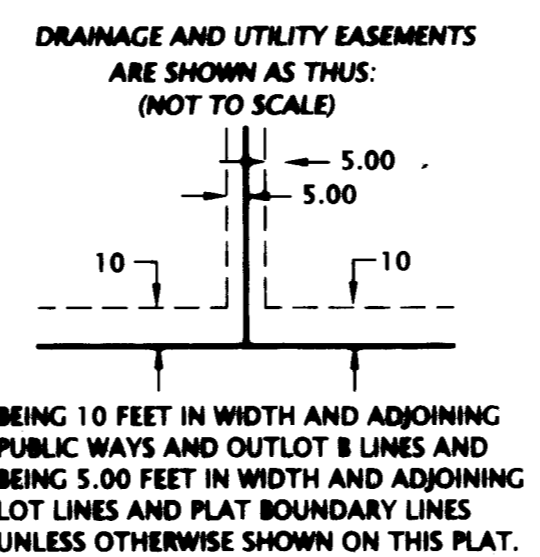
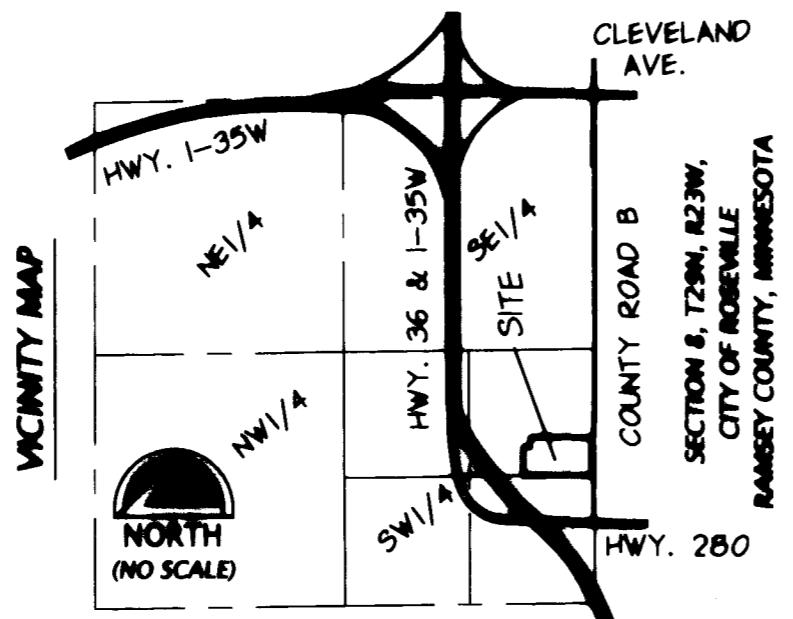
Deputy Registrar of Titles



MIDLAND LEGACY ESTATE 3RD ADDITION



STATE TRUNK HIGHWAY NO. 280



- LEGEND**
- Denotes 1/2 inch x 14 inch iron pipe marked with Minnesota License No. 25718 to be set within one year after recording of this plat.
 - Denotes 1/2 inch x 14 inch iron pipe set and marked with Minnesota License No. 25718.
 - Denotes found iron pipe.
- Wet lands shown delineated by Bopray Environmental Services and located on 9-2-20 by Cornerstone Land Surveying, Inc.

