

WESTERN HIGHLAND BRIDGE

© 2020 Westwood Professional Services, Inc.

KNOW ALL PERSONS BY THESE PRESENTS: That Project Paul, LLC, a Delaware limited liability company, owner of the following described property situated in the City of Saint Paul, County of Ramsey, State of Minnesota:

Lot 1, Block 8; Lot 1, Block 14; Lot 1, Block 19; and Lot 1, Block 25, Ford, according to the recorded plat thereof, Ramsey County, Minnesota.

Has caused the same to be surveyed and platted as WESTERN HIGHLAND BRIDGE and does hereby dedicate to the public for public use forever the drainage and utility easements as shown.

In witness whereof said Project Paul, LLC, a Delaware limited liability company, has caused these presents to be signed by its proper officer this 2nd day of February, 2021.

Signed: Project Paul, LLC, a Delaware limited liability company

By Kristin C. Munro, Manager
Name, Title

STATE OF MINNESOTA
COUNTY OF Hennepin
The foregoing instrument was acknowledged before me this 2nd day of February, 2021 by Kristin C. Munro, Manager of Project Paul, LLC, a Delaware limited liability company, on behalf of the company.

Michelle Spill (Signature) Michelle Spill (Name Printed)

Notary Public, Hennepin County, Minnesota
My Commission Expires Jan 31, 2023

I, Mathew J. Welinski, Professional Land Surveyor, do hereby certify that I have surveyed or directly supervised the survey of the property described on this plat; prepared this plat or directly supervised the preparation of this plat; that this plat is a correct representation of the boundary survey; that all mathematical data and labels are correctly designated on this plat; that all monuments depicted on this plat have been correctly set; that all water boundaries and wet lands, as defined in Minnesota Statutes, Section 505.01, Subd. 3, as of the date of the surveyor's certification are shown and labeled on this plat; and all public ways are shown and labeled on this plat.

Dated this 2nd day of February, 2021

Mathew J. Welinski
Mathew J. Welinski, Professional Land Surveyor
Minnesota License No. 53596

STATE OF MINNESOTA
COUNTY OF Stearns
The foregoing Surveyor's Certificate was acknowledged before me this 2nd day of January, 2021 by Mathew J. Welinski, a Professional Land Surveyor.

Betty McNeary (Signature) Betty McNeary (Name Printed)

Notary Public, Stearns County, Minnesota
My Commission Expires Jan 31, 2025

CITY COUNCIL
City of Saint Paul
I do hereby certify that on the 20 day of January, 2021, the City Council of the City of Saint Paul, Minnesota, approved this plat.

Shari Noveck
City Clerk

PROPERTY TAX, RECORDS AND ELECTION SERVICES DEPARTMENT
Pursuant to Minnesota Statutes, Section 505.021, Subd. 9, taxes payable in the year 2021 on the land hereinbefore described have been paid. Also, pursuant to Minnesota Statutes, Section 272.12, there are no delinquent taxes and transfer entered this 3rd day of February, 2021.

Christopher A. Samuel, Ramsey County Auditor/Treasurer
By _____, Deputy

COUNTY SURVEYOR
Pursuant to MN Statutes, Section 383A.42 this plat is approved this 3rd day of FEBRUARY, 2021.

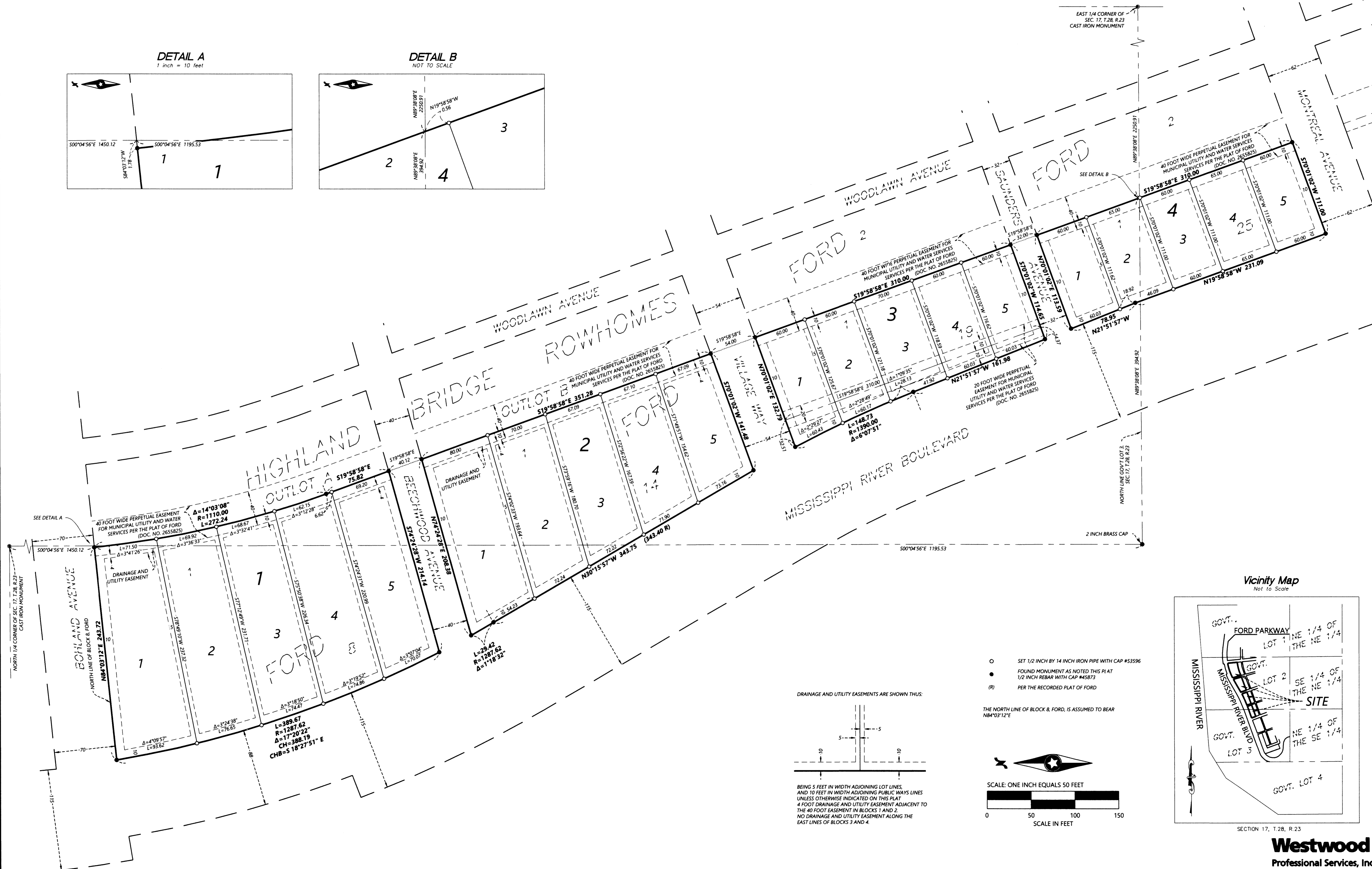
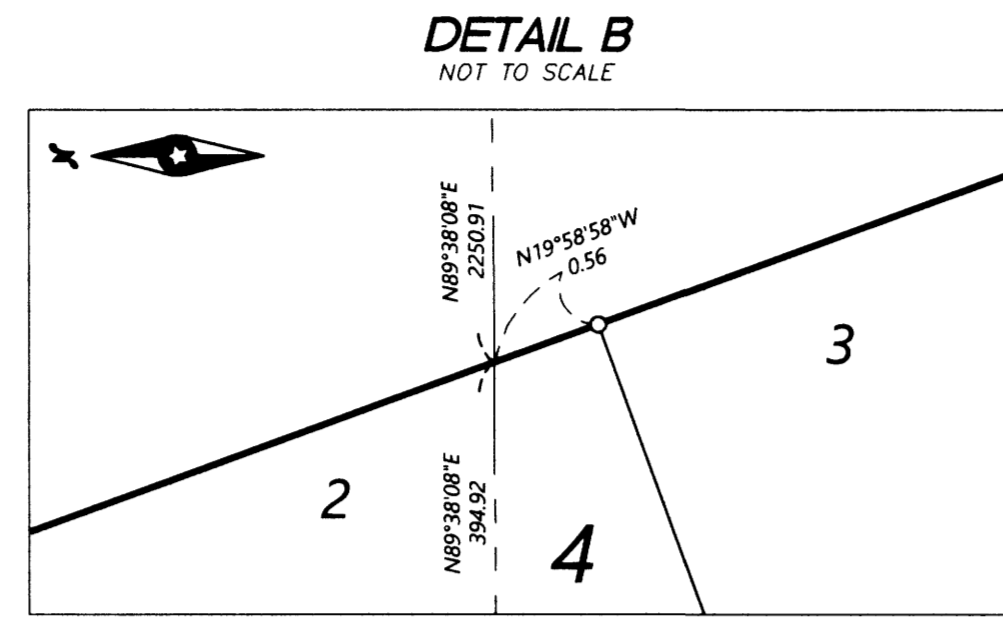
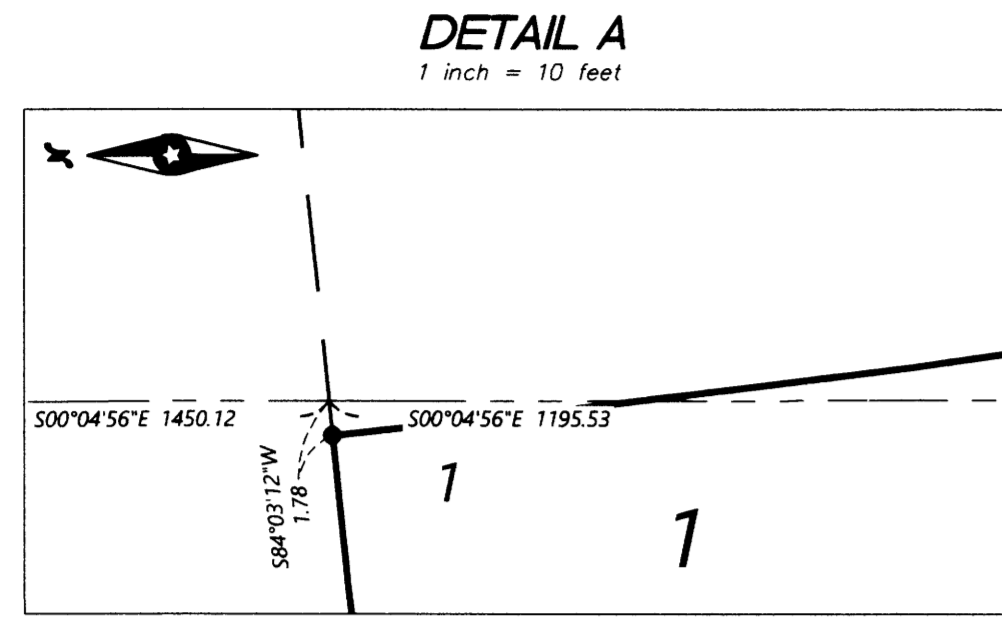
DANIEL D. BAAR
Daniel D. Baar, L.S.
Ramsey County Surveyor
BY: STEPHANE J. ROBERT
DEPUTY COUNTY SURVEYOR

REGISTRAR OF TITLES, County of Ramsey, State of Minnesota
I hereby certify that this plat of WESTERN HIGHLAND BRIDGE was filed in the office of the Registrar of Titles for public record on this 3rd day of February, 2021, at 11:30 clock A.M., and was duly filed in Book 52, of Plats, Pages 47 and 48, as Document Number 2689730.

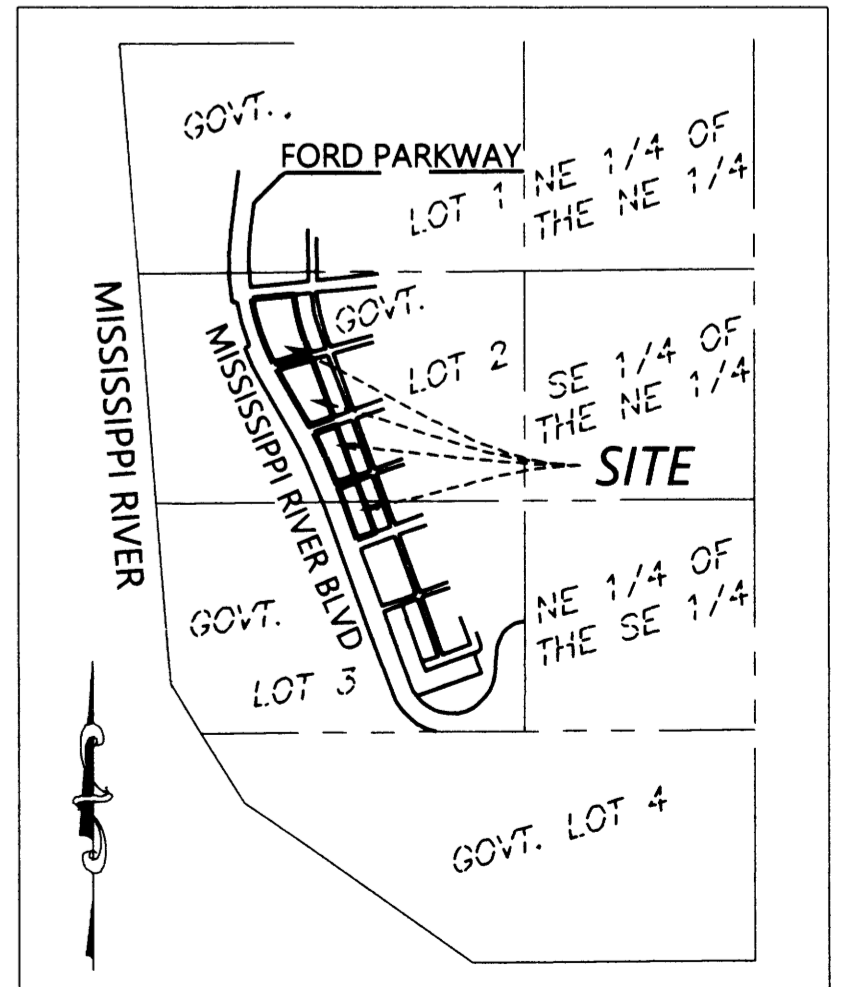
Deputy Registrar of Titles

WESTERN HIGHLAND BRIDGE

© 2020 Westwood Professional Services, Inc.

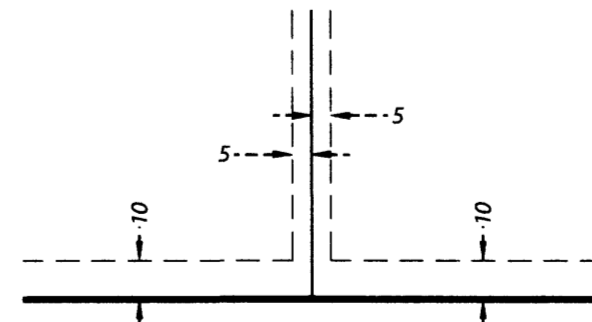


Vicinity Map
Not to Scale



SECTION 17, T.28, R.23

DRAINAGE AND UTILITY EASEMENTS ARE SHOWN THUS:



BEING 5 FEET IN WIDTH ADJOINING LOT LINES AND 10 FEET IN WIDTH ADJOINING PUBLIC WAYS LINES UNLESS OTHERWISE INDICATED ON THIS PLAT 4 FOOT DRAINAGE AND UTILITY EASEMENT ADJACENT TO THE 40 FOOT EASEMENT IN BLOCKS 1 AND 2 NO DRAINAGE AND UTILITY EASEMENT ALONG THE EAST LINES OF BLOCKS 3 AND 4.

- SET 1/2 INCH BY 14 INCH IRON PIPE WITH CAP #53596
- FOUND MONUMENT AS NOTED THIS PLAT 1/2 INCH REBAR WITH CAP #45871
- (R) PER THE RECORDED PLAT OF FORD

THE NORTH LINE OF BLOCK 8, FORD, IS ASSUMED TO BEAR N84°03'12"E

