

# PETTERSEN ESTATES

KNOW ALL MEN BY THESE PRESENTS: That Gunnar Pettersen, a single person, fee owner of the following described property situated in the City of Roseville, County of Ramsey, State of Minnesota:

Lots 15 and 16, Block 1, ROCHAT'S ADDITION, Ramsey County, Minnesota;

and

The East 43 feet of the following described property:  
Lot 1 and the North 15 feet of Lot 2, Block 1, ROCHAT'S ADDITION, Ramsey County, Minnesota.

Has caused the same to be surveyed and platted as PETERSEN ESTATES and does hereby dedicate to the public for public use forever the drainage and utility easements as shown on this plat.

In witness whereof said Gunnar Pettersen, a single person, has hereunto set his hand this 19 day of August 20 18

Gunnar Pettersen  
Gunnar Pettersen

STATE OF MINNESOTA  
COUNTY OF Anoka

The foregoing instrument was acknowledged before me this 17<sup>th</sup> day of August 20 18, by Gunnar Pettersen, a single person.

Nicole A. Johnson

Nicole A. Johnson  
Notary Public, Anoka County, Minnesota  
My Commission Expires January 31, 2025

I, Jason E. Rud, Licensed Land Surveyor, do hereby certify that I have surveyed or directly supervised the survey of the property described on this plat; prepared this plat or directly supervised the preparation of this plat; that this plat is a correct representation of the boundary survey; that all mathematical data and labels are correctly designated on this plat; that all monuments depicted on this plat have been correctly set or will be correctly set within one year of recording this plat; that all water boundaries and wet lands, as defined in Minnesota Statutes, Section 505.01, Subd. 3, as of the date of the surveyor's certification are shown and labeled on this plat; and all public ways are shown and labeled on this plat.

Dated this 16<sup>th</sup> day of AUGUST 20 18

Jason E. Rud  
Jason E. Rud, Land Surveyor  
Minnesota License No. 41578

STATE OF MINNESOTA  
COUNTY OF Anoka

The foregoing Surveyor's Certificate was acknowledged before me this 16<sup>th</sup> day of August 20 18, by Jason E. Rud, a Licensed Land Surveyor.

Lalae Mack  
Lalae Mack  
Notary Public, Anoka County, Minnesota  
My Commission Expires 01/31/2022

CITY OF ROSEVILLE

We do hereby certify that on the 21<sup>st</sup> day of July 20 18, the City Council of the City of Roseville, Minnesota, approved this plat. Also, the conditions of Minnesota Statutes, Section 505.03, Subd. 2, have been fulfilled.

[Signature] Mayor [Signature] City Clerk

PROPERTY TAX, RECORDS AND ELECTION SERVICES DEPARTMENT

Pursuant to Minnesota Statutes, Section 505.021, Subd. 9, taxes payable in the year 2018 on the land hereinbefore described have been paid. Also, pursuant to Minnesota Statutes, Section 272.12, there are no delinquent taxes and transfer entered this 22 day of AUGUST 20 18.

Christopher A. Samuel, Ramsey County Auditor/Treasurer

By \_\_\_\_\_ Deputy

COUNTY SURVEYOR

Pursuant to Minnesota Statutes, Section 383A.42, this plat is approved this 21<sup>st</sup> day of August 20 18

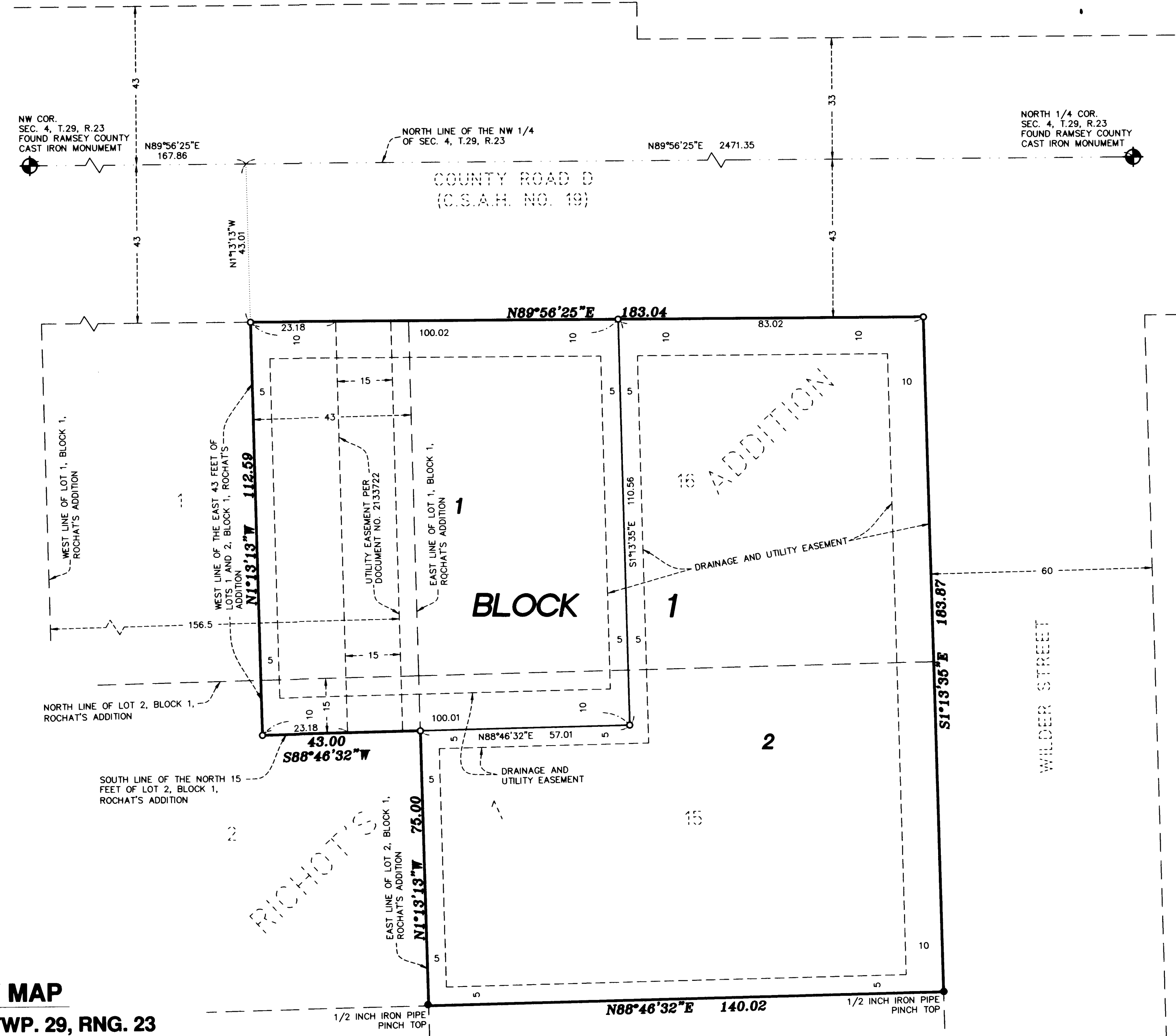
Craig W. Hinzman  
Craig W. Hinzman, L.S.  
Ramsey County Surveyor

Daniel D. Baur  
Daniel D. Baur, L.S.  
Deputy Ramsey County Surveyor

COUNTY RECORDER  
COUNTY OF RAMSEY, STATE OF MINNESOTA

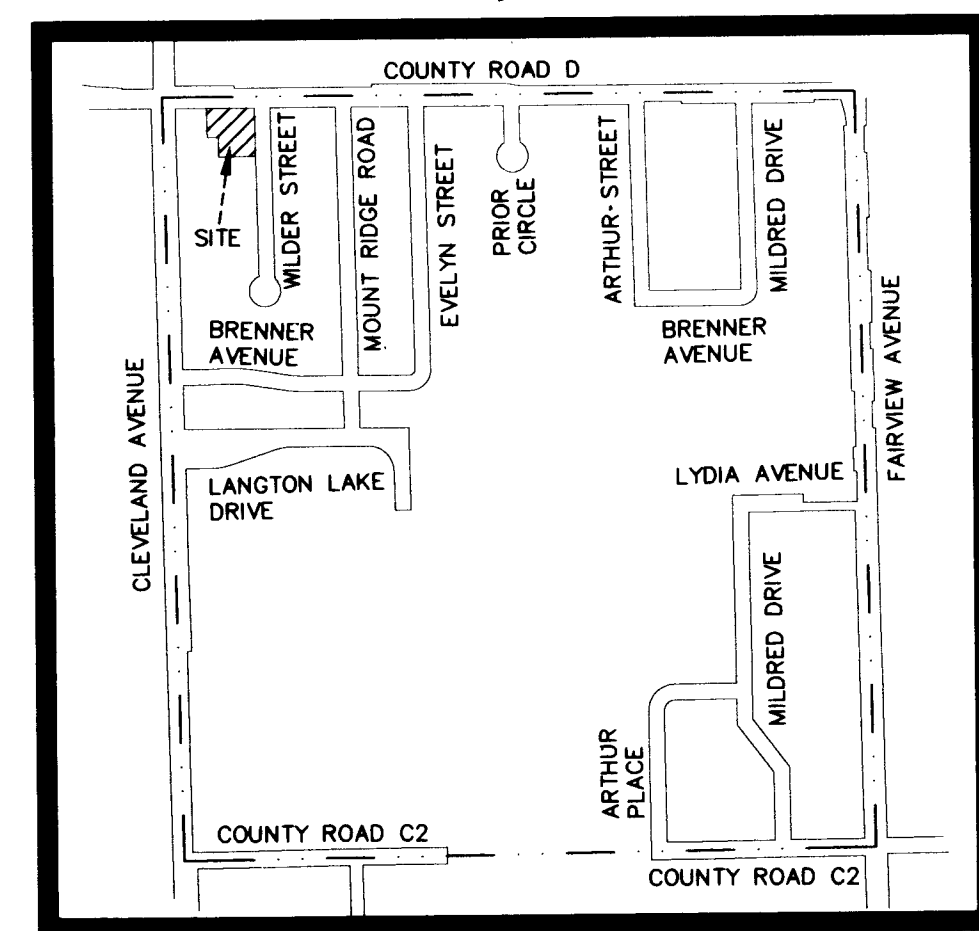
I hereby certify that this plat of PETERSEN ESTATES was filed in the office of the County Recorder for public record on this 22 day of AUGUST 20 18 at 11 o'clock A.M., and was duly filed in Book 128 of Plats, Page 19, as Document Number 4723835

Deputy County Recorder



### VICINITY MAP

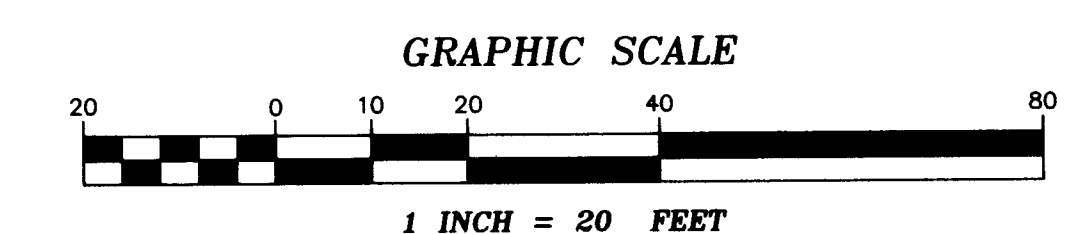
NW 1/4 OF SEC. 4, TWP. 29, RNG. 23



(NOT TO SCALE)

- Denotes Ramsey County Cast Iron Monument
- Denotes set 1/2 inch by 14 inch iron pipe monument marked RLS 41578
- Denotes found iron monument as labeled.

For the purposes of this plat, the North line of the Northwest Quarter of Section 4, Township 29, Range 23, Ramsey County, Minnesota is assumed to bear North 89 degrees 56 minutes 25 seconds East.



NORTH