

MLS SOCCER REDEVELOPMENT

KNOW ALL PERSONS BY THESE PRESENTS: That RK Midway Shopping Center LLC, a Delaware limited liability company; RK University Midway LLC, a Delaware limited liability company; and Midway Lot 5 LLC, a Delaware limited liability company, owners of the following described property situated in the City of Saint Paul, County of Ramsey, State of Minnesota:

Lots 4 and 5, Block 1, MIDWAY SHOPPING CENTER

Have caused the same to be surveyed and platted as MLS SOCCER REDEVELOPMENT and do hereby dedicate to the public for public use forever the public ways and the drainage and utility easements as shown on this plat. The drainage and utility easements as shown on this plat convey rights on, over, under and across the property on which they are dedicated.

In witness whereof said RK Midway Shopping Center LLC, a Delaware limited liability company, has caused these presents to be signed by its proper officer this 14th day of December, 2017.

Signed: RK MIDWAY SHOPPING CENTER LLC
By: RK Midway Corp., a Delaware corporation, its managing member

[Signature]
Richard Birdoff, President

State of New York
County of New York

The foregoing instrument was acknowledged before me this 14th day of December, 2017 by Richard Birdoff, President of RK Midway Corp., a Delaware corporation, managing member of RK Midway Shopping Center LLC, a Delaware limited liability company, on behalf of the company.

[Signature]
(Signature)

Jessica Lopez
(Printed Name)
Notary Public BRONX County, of New York
My Commission Expires March 8, 2020

In witness whereof said RK University Midway LLC, a Delaware limited liability company, has caused these presents to be signed by its proper officer this 14th day of December, 2017.

Signed: RK UNIVERSITY MIDWAY LLC
By: REIN Midway Limited Partnership, a limited partnership under the laws of Connecticut, its manager
By: Rein Properties of Minnesota, Inc., a Minnesota corporation, its managing general partner

[Signature]
Richard Birdoff, President

State of New York
County of New York

The foregoing instrument was acknowledged before me this 14th day of December, 2017 by Richard Birdoff, President of Rein Properties of Minnesota, Inc., a Minnesota corporation, managing general partner of REIN Midway Limited Partnership, a limited partnership under the laws of Connecticut, manager of RK University Midway LLC, a Delaware limited liability company, on behalf of the company.

[Signature]
(Signature)

Jessica Lopez
(Printed Name)
Notary Public BRONX County, of New York
My Commission Expires March 8, 2020

In witness whereof said Midway Lot 5 LLC, a Delaware limited liability company, has caused these presents to be signed by its proper officer this 14th day of December, 2017.

Signed: MIDWAY LOT 5 LLC
By: REIN Midway Limited Partnership, a limited partnership under the laws of Connecticut, its manager
By: Rein Properties of Minnesota, Inc., a Minnesota corporation, its managing general partner

[Signature]
Richard Birdoff, President

State of New York
County of New York

The foregoing instrument was acknowledged before me this 14th day of December, 2017 by Richard Birdoff, President of Rein Properties of Minnesota, Inc., a Minnesota corporation, managing general partner of REIN Midway Limited Partnership, a limited partnership under the laws of Connecticut, manager of Midway Lot 5 LLC, a Delaware limited liability company, on behalf of the company.

[Signature]
(Signature)

Jessica Lopez
(Printed Name)
Notary Public BRONX County, of New York
My Commission Expires March 8, 2020

SURVEYORS CERTIFICATION

I, Paul J. McGinley, Professional Land Surveyor, do hereby certify that I have surveyed or directly supervised the survey of the property described on this plat; prepared this plat or directly supervised the preparation of this plat; that this plat is a correct representation of the boundary survey; that all mathematical data and labels are correctly designated on this plat; that all monuments depicted on this plat have been correctly set; that all water boundaries and wet lands, as defined in Minnesota Statutes, section 505.01, Subd. 3, as of the date of the surveyor's certification are shown and labeled on this plat; and all public ways are shown and labeled on this plat.

Dated this 5th day of December, 2017.

[Signature]
Paul J. McGinley, Professional Land Surveyor
Minnesota License No. 16099

State of Minnesota
County of Hennepin

The foregoing Surveyor's Certificate was acknowledged before me this 5th day of DECEMBER, 2017 by Paul J. McGinley, a Professional Land Surveyor.

[Signature]
(Signature)

SHARON F. MORIN
(Printed Name)
Notary Public Hennepin County, Minnesota
My Commission Expires January 31, 2020

CITY OF SAINT PAUL

I do hereby certify that on the 15 day of November, 2017, the City Council of the City of Saint Paul, Minnesota, approved this plat. Also, the conditions of Minnesota Statutes, Section 505.03, Subd. 2, have been fulfilled.

[Signature]
Clerk

PROPERTY TAX, RECORDS AND ELECTION SERVICES DEPARTMENT

Pursuant to Minnesota Statutes, Section 505.021, Subd. 9, taxes payable in the year _____ on the land hereinbefore described have been paid. Also, pursuant to Minnesota Statutes, Section 272.12, there are no delinquent taxes and transfer entered this _____ day of _____, 201____.

Christopher A. Samuel, Ramsey County Auditor/Treasurer

By _____, Deputy

COUNTY SURVEYOR

Pursuant to Minnesota Statutes, Section 383A.42, this plat is approved this 14th day of December, 2017.

[Signature]
Craig W. Minzman, Land Surveyor
Ramsey County Surveyor

REGISTRAR OF TITLES, County of Ramsey, State of Minnesota

I hereby certify that this plat of MLS SOCCER REDEVELOPMENT was filed in the office of the Registrar of Titles for public record on this 26th day of DECEMBER, 2017, at 10 o'clock AM, and was duly filed in Book 51 of Plats, Pages 14 and 15, as Document No. 26-5572.

Deputy Registrar of Titles

MLS SOCCER REDEVELOPMENT

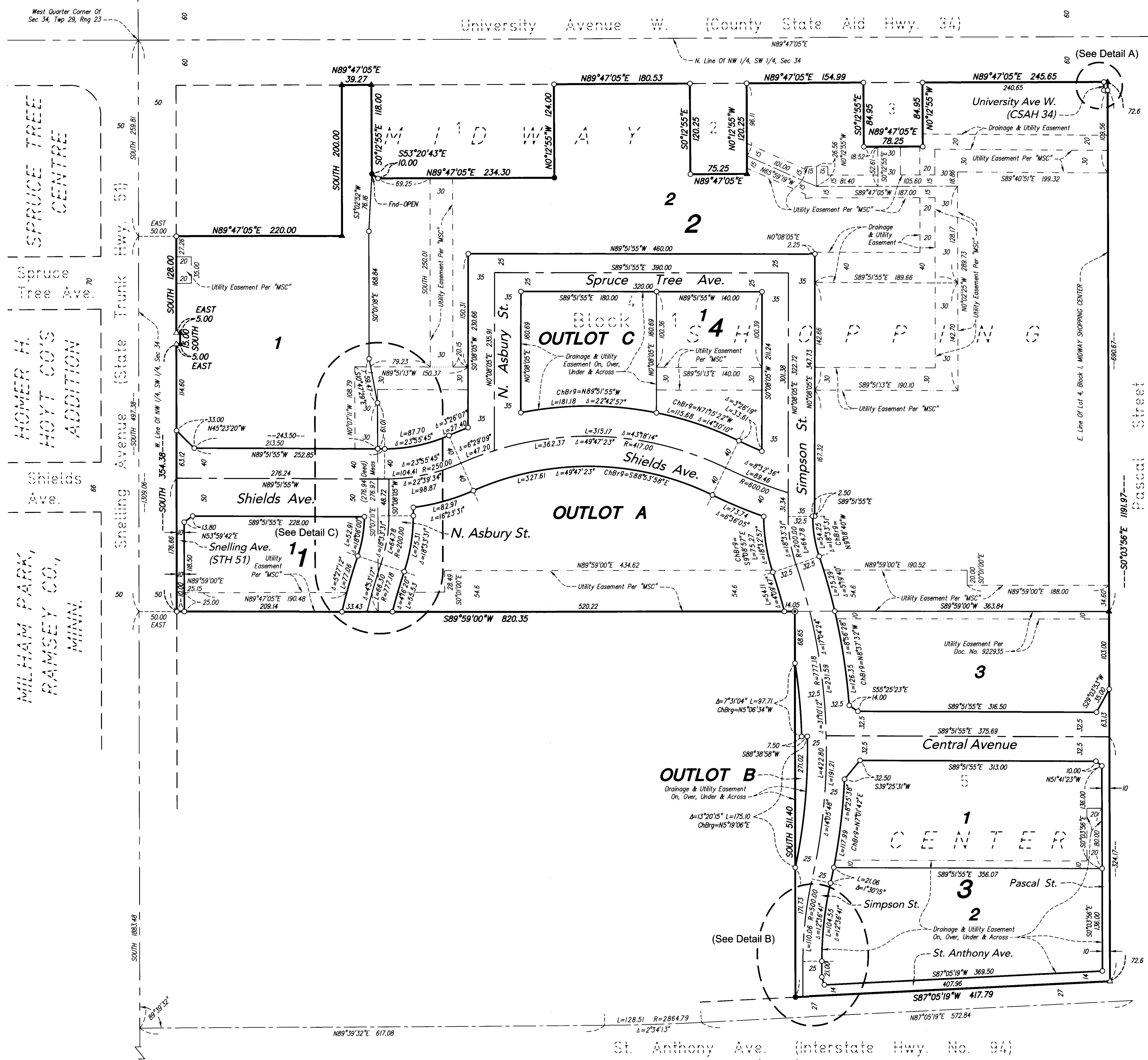
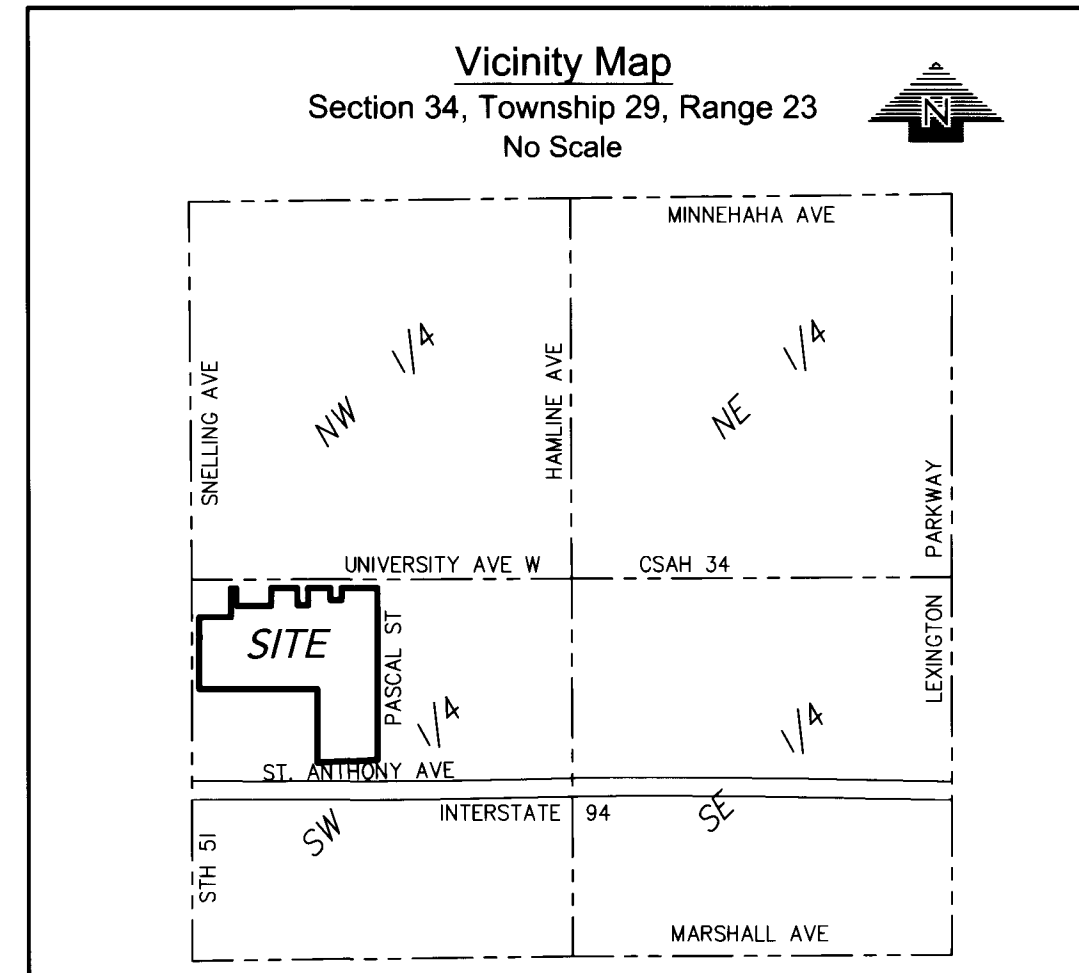
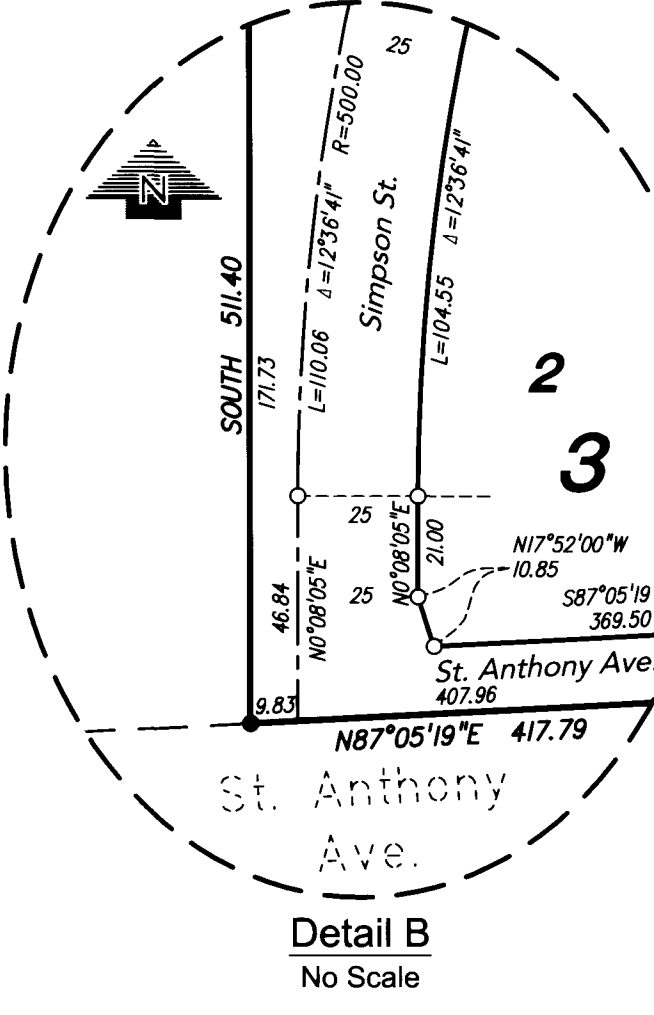
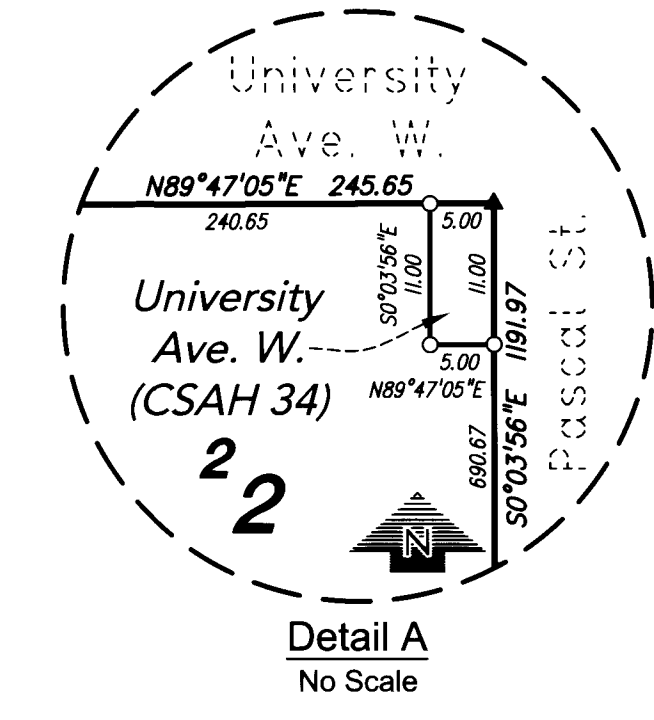
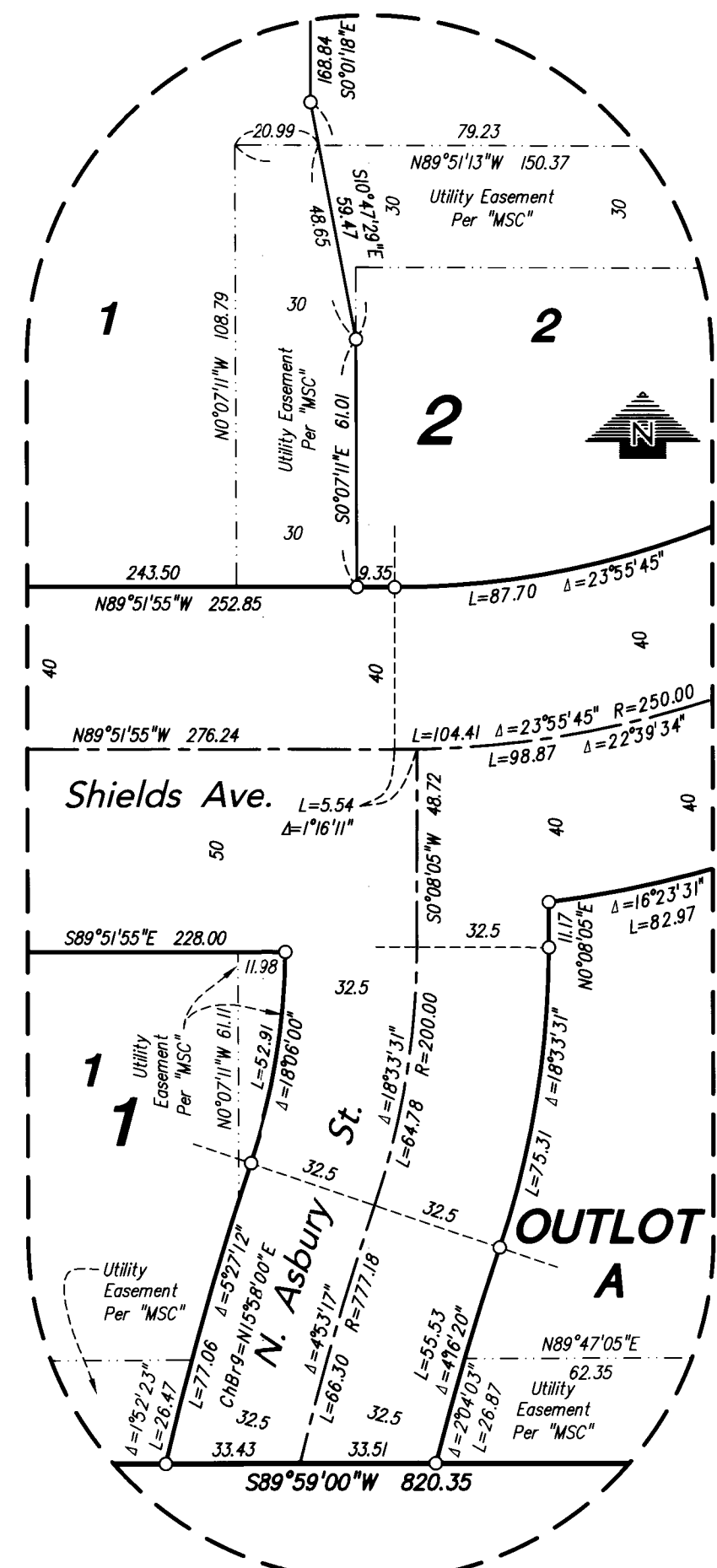
LYMAN D. BAIRD'S ADDITION



0 80
SCALE IN FEET
1 INCH = 80 FEET

FOR THE PURPOSES OF THIS PLAT, THE EAST LINE OF LOT 4, BLOCK 1, MIDWAY SHOPPING CENTER IS ASSUMED TO HAVE A BEARING OF SOUTH 0°03'56" EAST.

- DENOTES 1/2 INCH X 14 INCH IRON PIPE SET, MARKED "LS 16099"
 - △ DENOTES "PK NAIL" SET WITH DISK MARKED "LS 16099"
 - DENOTES 1/2 INCH IRON PIPE FOUND, CAP DESTROYED, UNLESS OTHERWISE INDICATED
 - ▲ DENOTES "PK NAIL" FOUND
 - ⊙ DENOTES FOUND "PUNCH" MARK IN STEEL BEAM
- "MSC" DENOTES PLAT OF MIDWAY SHOPPING CENTER



SPRUCE TREE CENTRE
 HOMER H. HOYT CO'S ADDITION
 MILHAM PARK, RAMSEY CO., MINN.

KITTSONDALE, BEING AUDITOR'S SUBDIVISION NO. 27, ST. PAUL, MINN.
 J. F. EISENMEYERS 2ND ADD.