

CREEKVIEW

COPY

5155

KNOW ALL PERSONS BY THESE PRESENTS: That Exceptional Homes By Design, Inc., a Minnesota corporation, owner of the following described property situated in the City of Vadnais Heights, County of Ramsey, State of Minnesota:

Lots 27, 28 and 29, EDGERTON GROVE, Ramsey County, Minnesota.

Has caused the same to be surveyed and platted as CREEKVIEW and does hereby dedicate or donate to the public for public use forever the public way and the drainage and utility easements as shown on this plat.

In witness whereof said Exceptional Homes By Design, Inc., a Minnesota corporation, has caused these presents to be signed by its proper officer this 19th day of October, 2016.

Signed: Exceptional Homes By Design, Inc.

Jerry J. Carlson, VP Operations

STATE OF MINNESOTA
COUNTY OF Ramsey

The foregoing instrument was acknowledged before me this 19th day of October, 2016 by Jerry J. Carlson, VP Operations of Exceptional Homes By Design, Inc., a Minnesota corporation, on behalf of the corporation.

Jessica Currier
Jessie Currier
Notary Public, Ramsey County, Minnesota
My Commission expires 1-31-19



I, Joshua P. Schneider, Professional Land Surveyor, do hereby certify that I have surveyed or directly supervised the survey of the property described on this plat; prepared this plat or directly supervised the preparation of this plat; that this plat is a correct representation of the boundary survey; that all mathematical data and labels are correctly designated on this plat; that all monuments depicted on this plat have been correctly set; that all monuments indicated on this plat will be correctly set within one year; that all water boundaries and wet lands, as defined in Minnesota Statutes, Section 505.01, Subd. 3, as of the date of the surveyor's certification are shown and labeled on this plat; and all public ways are shown and labeled on this plat.

Dated this 18th day of April, 2016.

Joshua P. Schneider
Joshua P. Schneider, Licensed Land Surveyor
Minnesota License Number 44655

STATE OF MINNESOTA
COUNTY OF ANOKA

The foregoing instrument was acknowledged before me this 18th day of April, 2016, by Joshua P. Schneider, a Professional Land Surveyor.

Arlyn R. Kittelson
Arlyn R. Kittelson
Notary Public, ANOKA County, Minnesota
My Commission expires 1-31-2020

City of Vadnais Heights

We do hereby certify that on the 17th day of February, 2016, the City Council of the City of Vadnais Heights, Minnesota, approved this plat.

Theresa Estay Mayor William City Clerk

Department of Property Records and Revenue

Pursuant to Minnesota Statutes, Section 505.021, Subd. 9, taxes payable in the year 2016 on the land hereinbefore described have been paid. Also, pursuant to Minnesota Statutes, Section 272.12, there are no delinquent taxes and transfer entered this 1 day of August, 2017.

Christopher Samuli Treasurer/Auditor
Department of Property Records and Revenue

By Christopher Samuli Deputy
County Surveyor

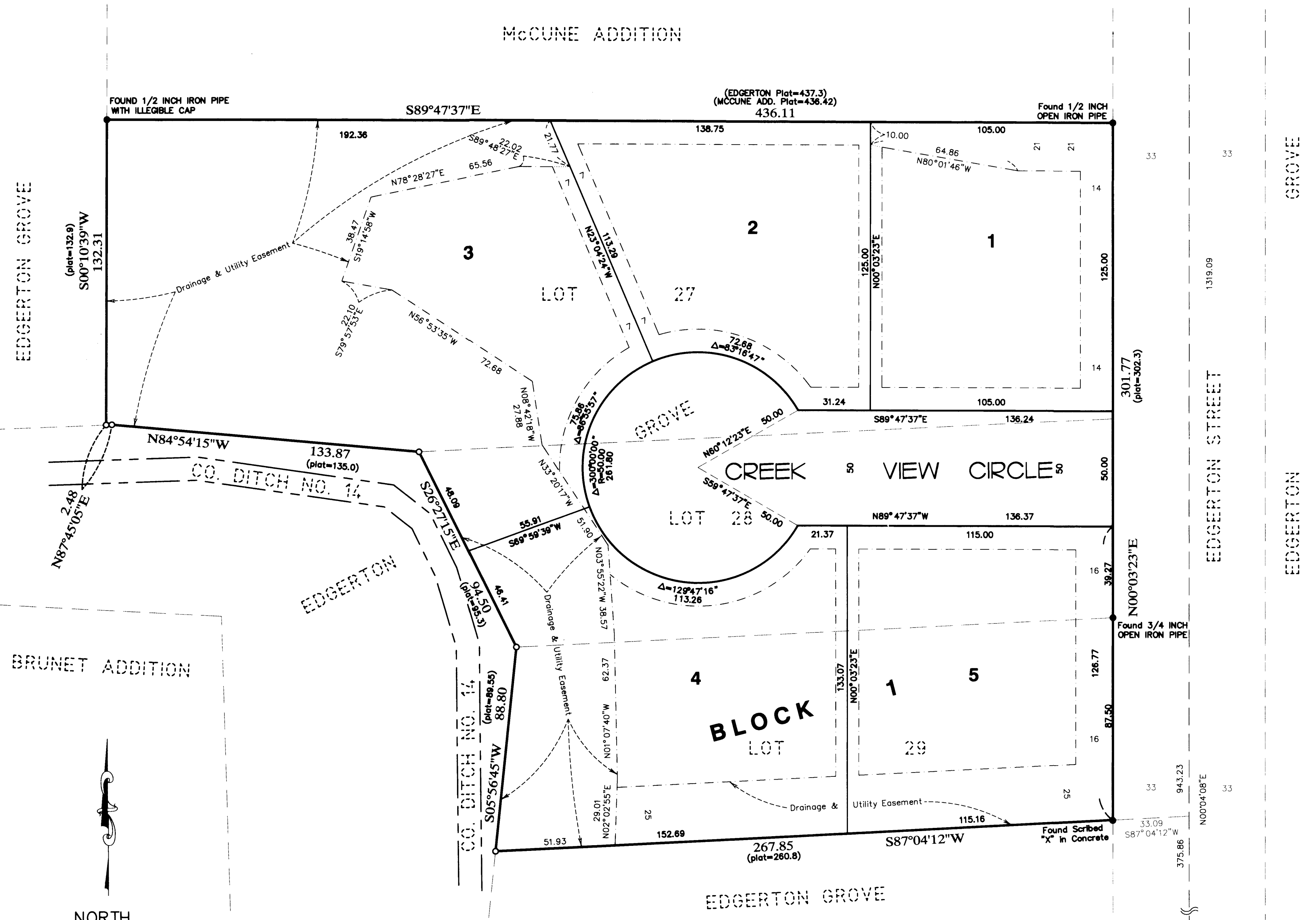
Pursuant to Minnesota Statutes, Section 383A.42, this plat is approved this 8th day of August, 2017.

Craig W. Hatzman
Craig W. Hatzman, L.S.
Ramsey County Surveyor

Registrar of Titles, County of Ramsey, State of Minnesota

I hereby certify that this plat of CREEKVIEW was filed in the office of the Registrar of Titles for public record on this 15th day of AUGUST, 2017, at 11:25 o'clock A.M. and was duly filed in Book 51 of Plats, Page 9, as Document Number 2594490.

Deputy Registrar of Titles

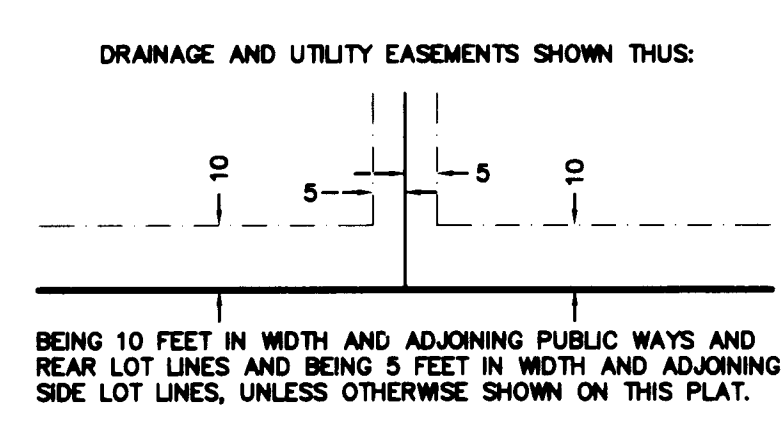
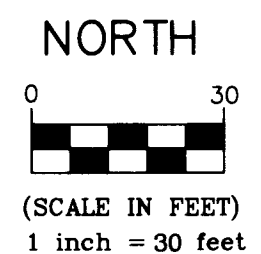


BRUNET ADDITION

EDGERTON GROVE

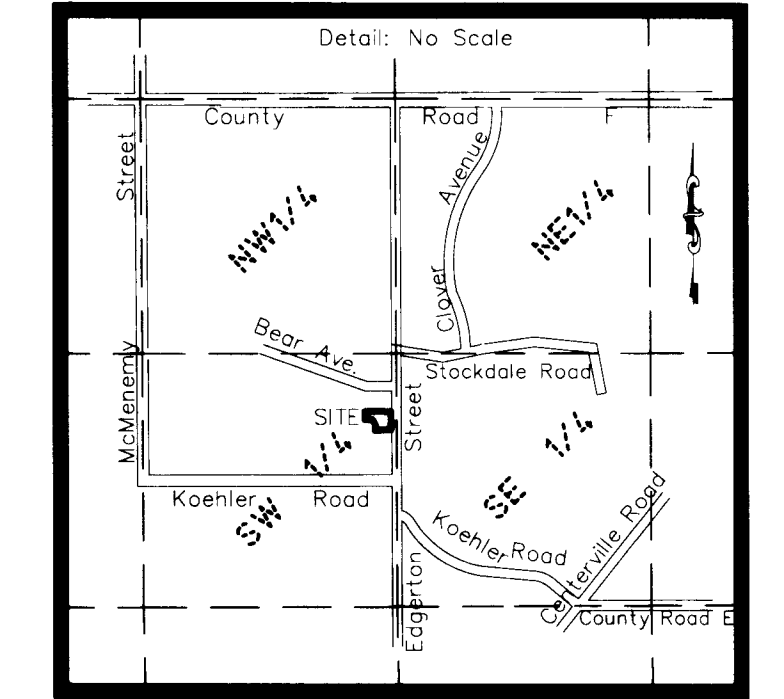
EDGERTON GROVE

EDGERTON



VICINITY MAP

SECTION 29, TOWNSHIP 30, RANGE 22



- (plot) Denotes distance as shown on EDGERTON GROVE
- Denotes 1/2 inch by 14 inch iron pipe monument set and marked by License No. 44655.
- Denotes found monument as specified
- ⊕ Denotes Ramsey County Cast Iron Monument, unless otherwise noted.

Any required interior monument location on this plat with no monument symbol shown, indicates an interior plat monument that will be set, and which shall be in place within one year after the recording of this plat and will be marked by a 1/2 inch by 14 inch iron pipe monument set and marked by License No. 44655.

The orientation of this bearing system is based on the east line of Lots 27, 28 and 29, EDGERTON GROVE, which is assumed to bear N00°03'23"E