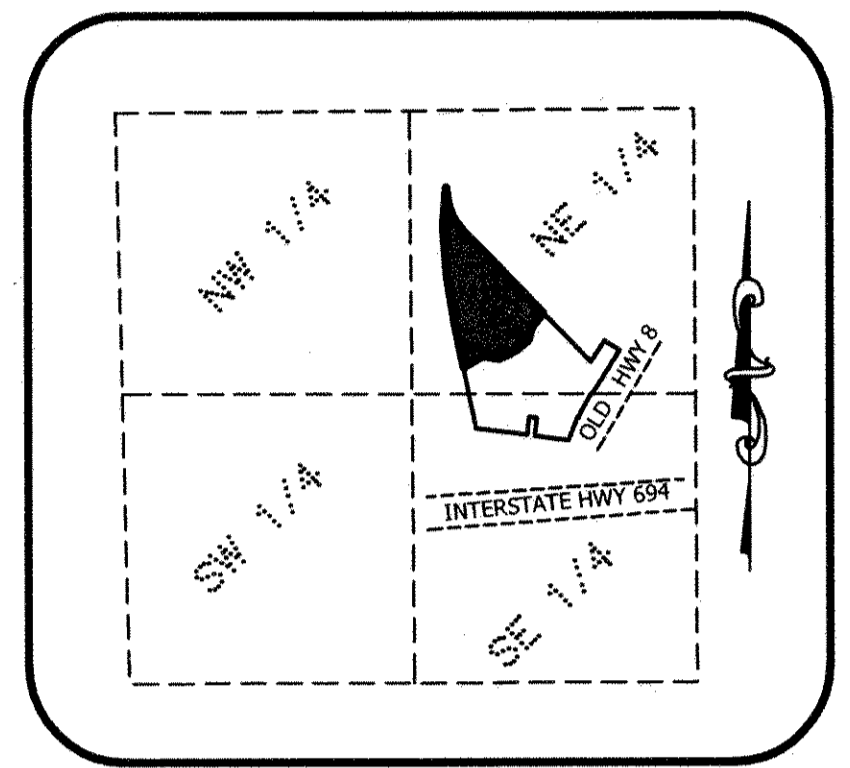


ENCLAVE AT NEW BRIGHTON EXCHANGE 3RD ADDITION

VICINITY MAP
SECTION 20, T30N, R23W
NOT TO SCALE



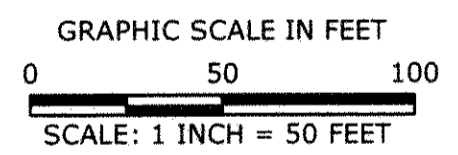
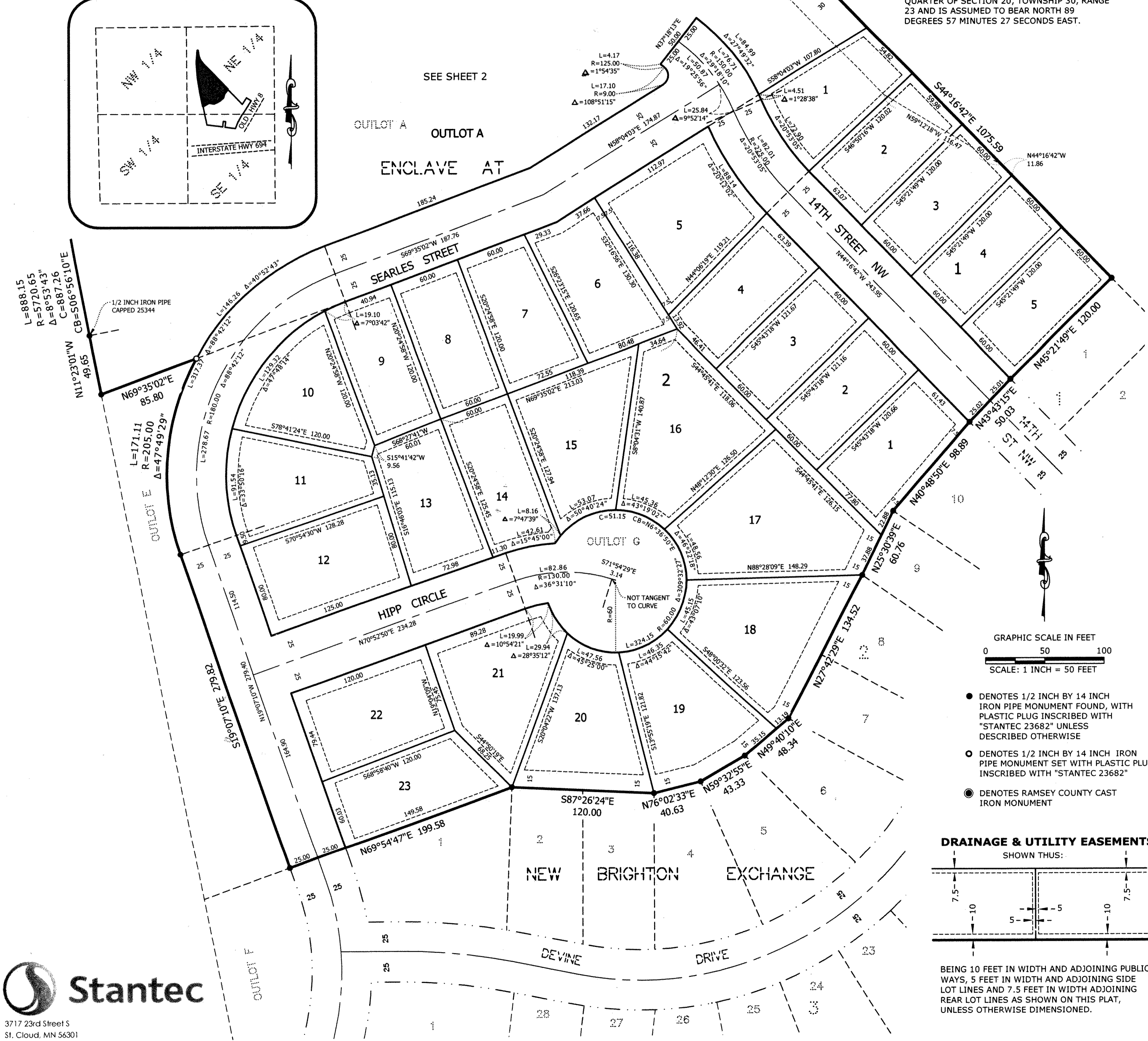
SEE SHEET 2

OUTLOT A
OUTLOT A
ENCLAVE AT

UTILITY EASEMENT TO RAMSEY COUNTY PER DOC. NO. 2269983 PARTIALLY RELEASED PER TORRENS DOC. NO. 2513823

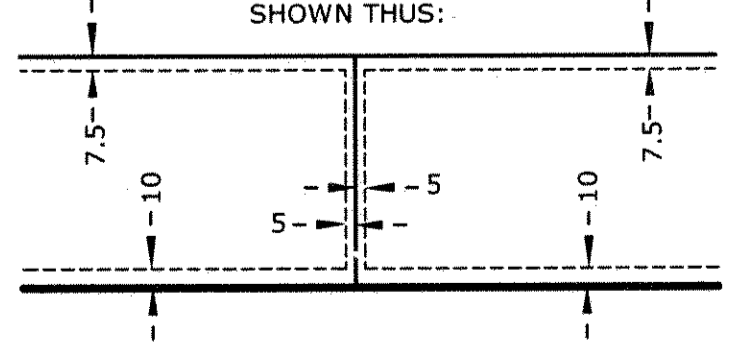
SURVEYOR'S NOTE
ANY REQUIRED INTERIOR MONUMENT LOCATION ON THIS PLAT WITH NO MONUMENT SYMBOL SHOWN, INDICATES AN INTERIOR PLAT MONUMENT THAT WILL BE SET, AND WHICH SHALL BE IN PLACE WITHIN ONE YEAR AFTER THE RECORDING OF THIS PLAT.

BEARING ORIENTATION
BASED ON THE NORTH LINE OF THE SOUTHEAST QUARTER OF SECTION 20, TOWNSHIP 30, RANGE 23 AND IS ASSUMED TO BEAR NORTH 89 DEGREES 57 MINUTES 27 SECONDS EAST.



- DENOTES 1/2 INCH BY 14 INCH IRON PIPE MONUMENT FOUND, WITH PLASTIC PLUG INSCRIBED WITH "STANTEC 23682" UNLESS DESCRIBED OTHERWISE
- DENOTES 1/2 INCH BY 14 INCH IRON PIPE MONUMENT SET WITH PLASTIC PLUG INSCRIBED WITH "STANTEC 23682"
- DENOTES RAMSEY COUNTY CAST IRON MONUMENT

DRAINAGE & UTILITY EASEMENTS
SHOWN THUS:



BEING 10 FEET IN WIDTH AND ADJOINING PUBLIC WAYS, 5 FEET IN WIDTH AND ADJOINING SIDE LOT LINES AND 7.5 FEET IN WIDTH ADJOINING REAR LOT LINES AS SHOWN ON THIS PLAT, UNLESS OTHERWISE DIMENSIONED.

KNOW ALL MEN BY THESE PRESENTS: That Pulte Homes of Minnesota, LLC, a Minnesota limited liability company, fee owner of the following described property situated in the City of New Brighton, County of Ramsey, State of Minnesota:

Outlot G, ENCLAVE AT NEW BRIGHTON EXCHANGE, record plat, Ramsey County, Minnesota;
And that the City of New Brighton, a Minnesota Municipal Corporation, fee owner of the following described property situated in the City of New Brighton, County of Ramsey, State of Minnesota:
Outlot A, ENCLAVE AT NEW BRIGHTON EXCHANGE, record plat, Ramsey County, Minnesota.

Have caused the same to be surveyed and platted as ENCLAVE AT NEW BRIGHTON EXCHANGE 3RD ADDITION and do hereby dedicate and donate to the public for public use forever the public ways and also dedicate the easements as shown on this plat for drainage and utility purposes only.

In witness whereof said Pulte Homes of Minnesota, LLC, a Minnesota limited liability company, has caused these presents to be signed by its proper officer this 5th day of October, 2015.

Signed: Pulte Homes of Minnesota, LLC
Graham Epperson
Graham Epperson, Chief Manager

STATE OF MINNESOTA
COUNTY OF Hennepin

The foregoing instrument was acknowledged before me this 5th day of October, 2015, by Graham Epperson, Chief Manager of Pulte Homes of Minnesota, LLC, a Minnesota limited liability company, on behalf of the company.

Michelle (Notary Signature) *Mailee Hee* (Notary Printed Name)

NOTARY PUBLIC Anoka COUNTY, MINNESOTA

MY COMMISSION EXPIRES 1/31/2017

In witness whereof said City of New Brighton, a Minnesota Municipal Corporation, has caused these presents to be signed by its proper officers this 13th day of October, 2015.

Signed: CITY OF NEW BRIGHTON
Dave Jacobsen Mayor *Dean Lotter* City Manager

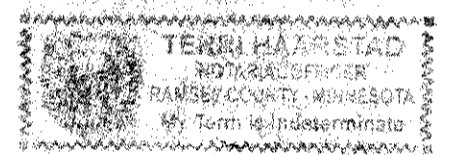
STATE OF MINNESOTA
COUNTY OF Ramsey

The foregoing instrument was acknowledged before me this 13th day of October, 2015, by Dave Jacobsen Mayor and by Dean Lotter City Manager of the City of New Brighton, a Minnesota Municipal Corporation, on behalf of said corporation.

Juni Haarstad (Notary Signature) *Terri Haarstad* (Notary Printed Name)

NOTARY PUBLIC, Ramsey COUNTY, MINNESOTA

MY COMMISSION EXPIRES my term is indeterminate.



SURVEYOR

I, Linda H. Brown, Professional Land Surveyor, do hereby certify that I have surveyed or directly supervised the survey of the property described on this plat; prepared this plat or directly supervised the preparation of this plat; that this plat is a correct representation of the boundary survey; that all mathematical data and labels are correctly designated on this plat; that all monuments indicated on this plat will be correctly set within one year, as defined in Minnesota Statutes Section 505.021, Subd. 10; that the outside boundary lines are correctly designated on this plat; that all water boundaries and wet lands, as defined in Minnesota Statutes, Section 505.01, Subd. 3, as of the date of the surveyor's certification are shown and labeled on this plat; and all public ways are shown and labeled on this plat.

Dated this 21st day of SEPTEMBER, 2015.

Linda H. Brown
LINDA H. BROWN
LICENSED LAND SURVEYOR
MINNESOTA LICENSE NUMBER 23682

STATE OF MINNESOTA
COUNTY OF STEARNS

The foregoing instrument was acknowledged before me this 21st day of SEPTEMBER, 2015, by Linda H. Brown, Licensed Land Surveyor, Minnesota License Number 23682.

Ryan E. Heinven (Notary Signature) *Ryan E. HEINVEN* (Notary Printed Name)

NOTARY PUBLIC STEARNS COUNTY, MINNESOTA

MY COMMISSION EXPIRES 01/31/2017

CITY OF NEW BRIGHTON

We do hereby certify that on the 27th day of January, 2015, the City Council of the City of New Brighton, Minnesota, approved this plat.

Dave Jacobsen Mayor *Dean Lotter* City Manager

DEPARTMENT OF PROPERTY RECORDS AND REVENUE

Pursuant to Minnesota Statutes, Section 505.021, Subd. 9, taxes payable in the year _____ on the land hereinbefore described have been paid. Also, pursuant to Minnesota Statutes, Section 272.12, there are no delinquent taxes and transfer entered this _____ day of _____, 20____.

Director
Department of Property Records and Revenue

By _____, Deputy

RAMSEY COUNTY SURVEYOR

I hereby certify that this plat complies with the requirements of Minnesota Statutes, Section 505.021, and is approved pursuant to Minnesota Statutes, Section 383A.42, this 15th day of October, 2015.

Craig W. Hinzman
Craig W. Hinzman, L.S.
Ramsey County Surveyor

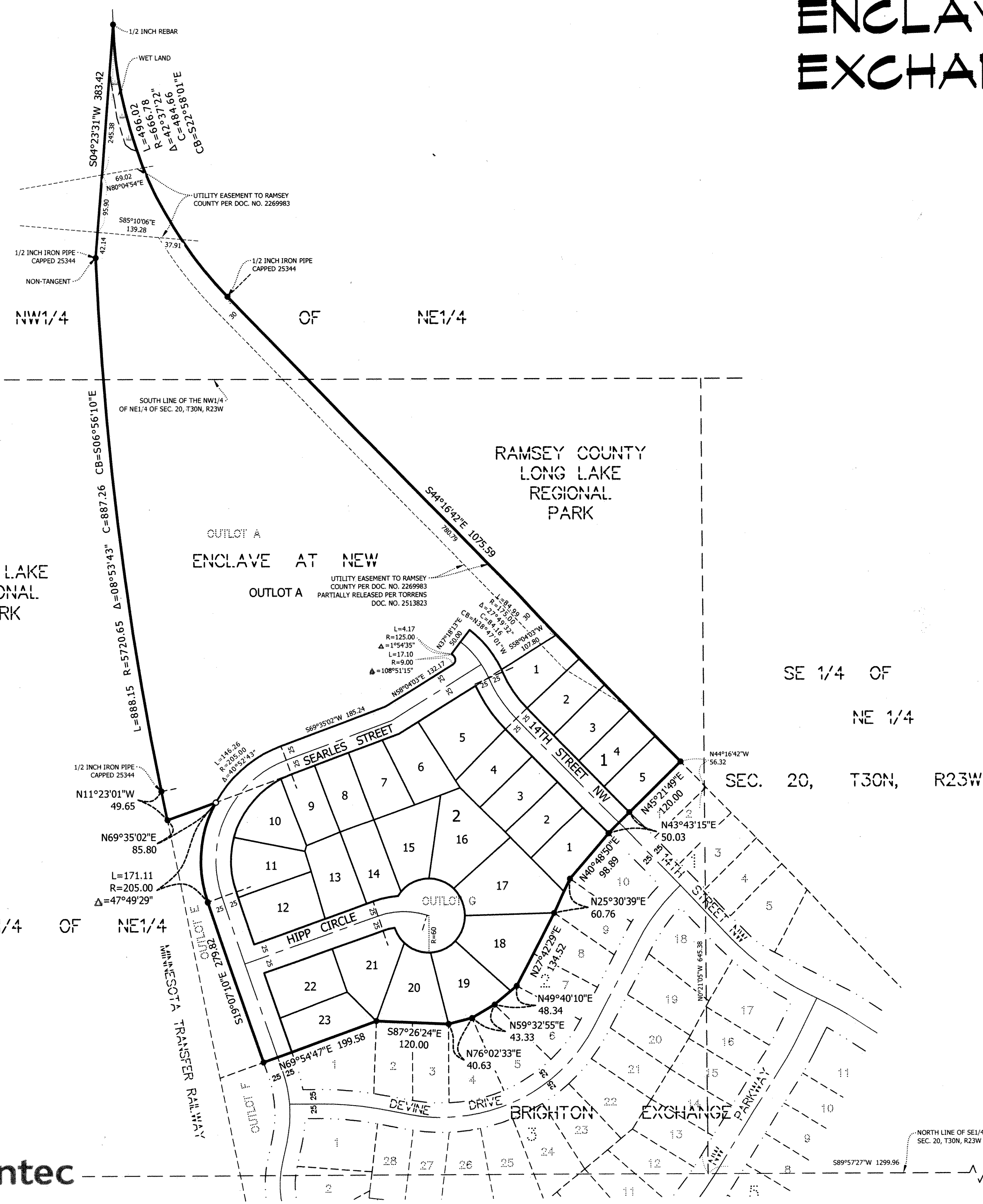
REGISTRAR OF TITLES,
COUNTY OF RAMSEY, STATE OF MINNESOTA

I hereby certify that this plat of ENCLAVE AT NEW BRIGHTON EXCHANGE 3RD ADDITION was filed in the office of the Registrar of Titles for public record on this 16th day of October, 2015, at 1 o'clock P.M. and was duly filed in Book 49 of Plats, Pages 30 and 31, as Document Number 2542883.

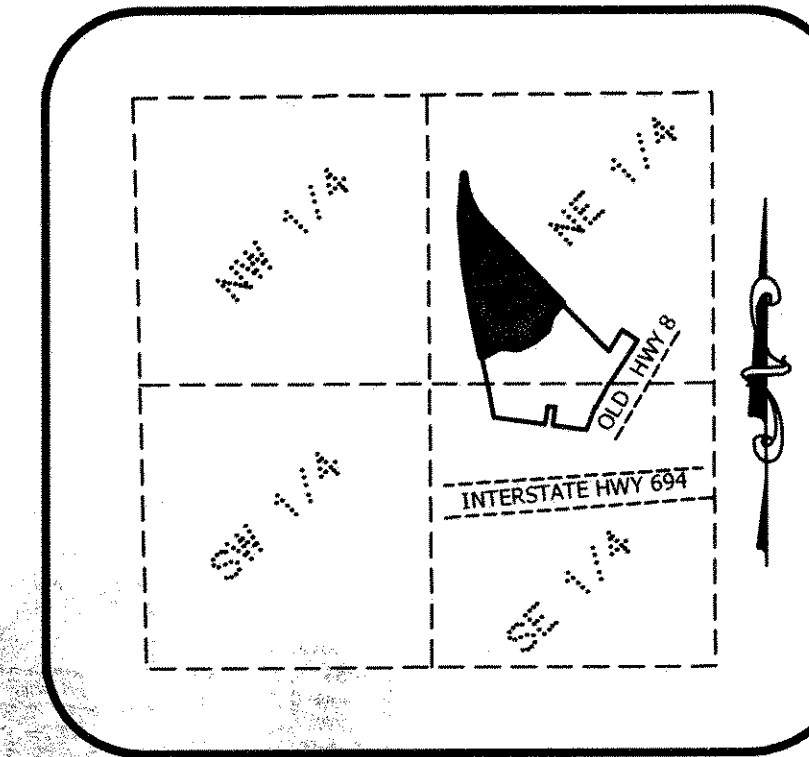
Deputy Registrar of Titles



ENCLAVE AT NEW BRIGHTON EXCHANGE 3RD ADDITION



VICINITY MAP
SECTION 20, T30N, R23W
NOT TO SCALE



SURVEYOR'S NOTE
 ANY REQUIRED INTERIOR MONUMENT LOCATION ON THIS PLAT WITH NO MONUMENT SYMBOL SHOWN, INDICATES AN INTERIOR PLAT MONUMENT THAT WILL BE SET, AND WHICH SHALL BE IN PLACE WITHIN ONE YEAR AFTER THE RECORDING OF THIS PLAT.

BEARING ORIENTATION
 BASED ON THE NORTH LINE OF THE SOUTHEAST QUARTER OF SECTION 20, TOWNSHIP 30, RANGE 23 AND IS ASSUMED TO BEAR NORTH 89 DEGREES 57 MINUTES 27 SECONDS EAST.

GRAPHIC SCALE IN FEET
 0 100 200
 SCALE: 1 INCH = 100 FEET

- DENOTES 1/2 INCH BY 14 INCH IRON PIPE MONUMENT FOUND WITH PLASTIC PLUG INSCRIBED WITH "STANTEC 23682" UNLESS DESCRIBED OTHERWISE
- DENOTES 1/2 INCH BY 14 INCH IRON PIPE MONUMENT SET WITH PLASTIC PLUG INSCRIBED WITH "STANTEC 23682"
- DENOTES RAMSEY COUNTY CAST IRON MONUMENT



3717 23rd Street S
 St. Cloud, MN 56301
 www.stantec.com