

# MOUNDS VIEW BUSINESS PARK 3RD ADDITION

KNOW ALL PERSONS BY THESE PRESENTS: That Multi-Tech Systems, Inc., a Minnesota corporation, fee owner of the following described property situated in the City of Mounds View, County of Ramsey, State of Minnesota:

That part of the Southwest Quarter of the Northwest Quarter of the Southeast Quarter lying Northeasterly of the Northerly right-of-way line of County Highway No. 10, formerly U.S. Highway No. 10, and the Northwest Quarter of the Northwest Quarter of the Southeast Quarter, except that part lying Southwesterly of the Northerly right-of-way line of County Highway No. 10, formerly U.S. Highway No. 10, all in Section 8, Township 30, Range 23;

Together with:

Lot 2, Block 1, Mounds View Business Park 2nd Addition.

Has caused the same to be surveyed and platted as MOUNDS VIEW BUSINESS PARK 3RD ADDITION and does hereby dedicate or donate to the public for public use forever the public ways and the easements for drainage and utility purposes as shown on this plat.

In witness whereof said Multi-Tech Systems, Inc., a Minnesota corporation, has caused these presents to be signed by its proper officer this 6<sup>th</sup> day of November, 2014.

Signed: MULTI-TECH SYSTEMS, INC.

Delmar Palacheck its COO  
(Signature) (Title)

Delmar Palacheck  
(Printed Name)

State of Minnesota  
County of Ramsey

The foregoing instrument was acknowledged before me this 6<sup>th</sup> day of November, 2014 by Delmar Palacheck, COO of Multi-Tech Systems, Inc., a Minnesota corporation, on behalf of the corporation.

Mary A. Springer  
(Signature)

MARY A. SPRINGER  
(Printed Name)

Notary Public Ramsey County, Minnesota  
My Commission Expires January 31, 2016.

### SURVEYORS CERTIFICATION

I, Richard L. Licht, Professional Land Surveyor, do hereby certify that I have surveyed or directly supervised the survey of the property described on this plat; prepared this plat or directly supervised the preparation of this plat; that this plat is a correct representation of the boundary survey; that all mathematical data and labels are correctly designated on this plat; that all monuments depicted on this plat have been correctly set; that all water boundaries and wet lands, as defined in Minnesota Statutes, Section 505.01, Subd. 3, as of the date of the surveyor's certification are shown and labeled on this plat; and all public ways are shown and labeled on this plat.

Dated this 6<sup>th</sup> day of November, 2014.

Richard L. Licht  
(Signature)

Richard L. Licht, Professional Land Surveyor  
Minnesota License No. 26724

State of Minnesota  
County of Hennepin

The foregoing instrument was acknowledged before me this 6<sup>th</sup> day of NOVEMBER, 2014 by Richard L. Licht.

Sharon F. Morin  
(Signature)

SHARON F. MORIN  
(Printed Name)

Notary Public Hennepin County, Minnesota  
My Commission Expires January 31, 2020.

### CITY OF MOUNDS VIEW

We do hereby certify that on the 6<sup>th</sup> day of November, 2014, the City Council of the City of Mounds View, Minnesota, approved this plat. Also, the conditions of Minnesota Statutes, Section 505.03, Subd. 2, have been fulfilled.

James Eason  
(Signature) Mayor

James Eason City Clerk

### DEPARTMENT OF PROPERTY RECORDS AND REVENUE

Pursuant to Minnesota Statutes, Section 505.021, Subd. 9, taxes payable in the year 2014 on the land hereinbefore described have been paid. Also, pursuant to Minnesota Statutes, Section 272.12, there are no delinquent taxes and transfer entered this 13<sup>th</sup> day of November, 2014.

Mark Oswald, Director  
Property Records and Revenue

By Mary Kay Simpson, Deputy

### COUNTY SURVEYOR

I hereby certify that this plat complies with the requirements of Minnesota Statutes, Section 505.021, and is approved pursuant to Minnesota Statutes, Section 383A.42, this 14<sup>th</sup> day of November, 2014.

Craig W. Hinzman,  
Craig W. Hinzman, Land Surveyor  
Ramsey County Surveyor

By: Daniel A. Baar  
DANIEL D. BAAR, LAND SURVEYOR  
DEPUTY COUNTY SURVEYOR

### REGISTRAR OF TITLES, County of Ramsey, State of Minnesota

I hereby certify that this plat of MOUNDS VIEW BUSINESS PARK 3RD ADDITION was filed in the office of the Registrar of Titles for public record on this 14<sup>th</sup> day of NOVEMBER, 2014, at 10:00 o'clock A.M. and was duly filed in Book 49 of Plats, Pages 12 and 13, as Document Number T02518399.

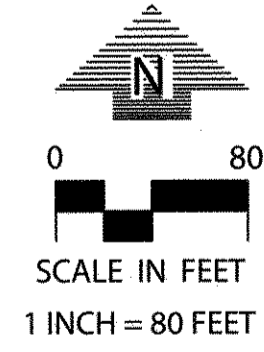
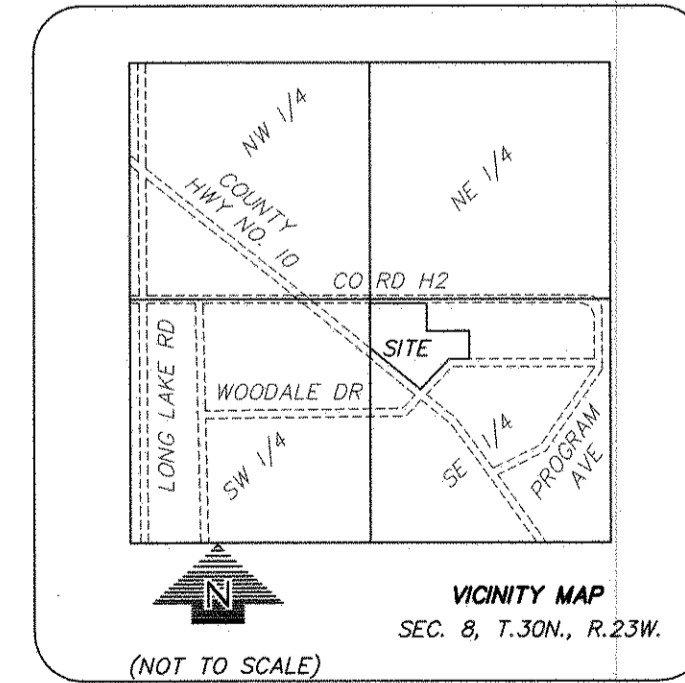
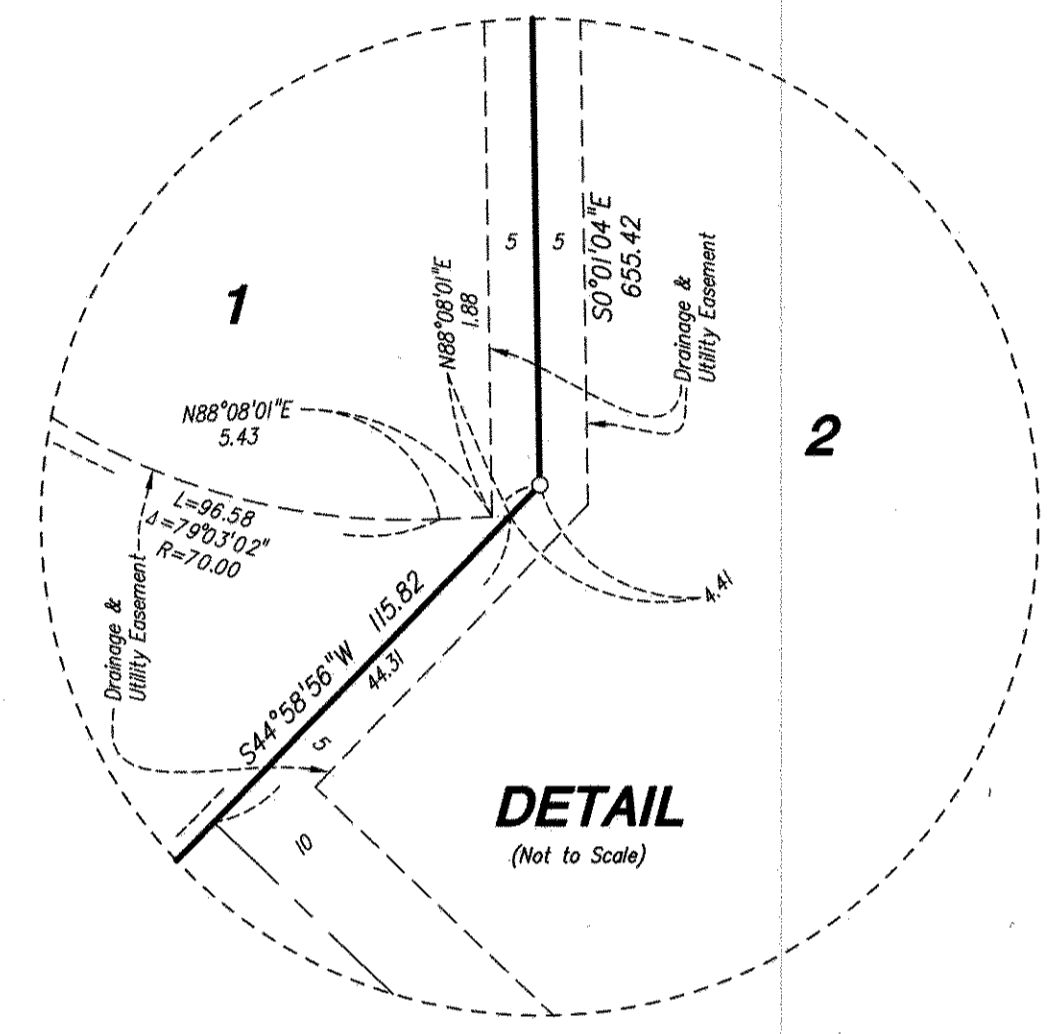
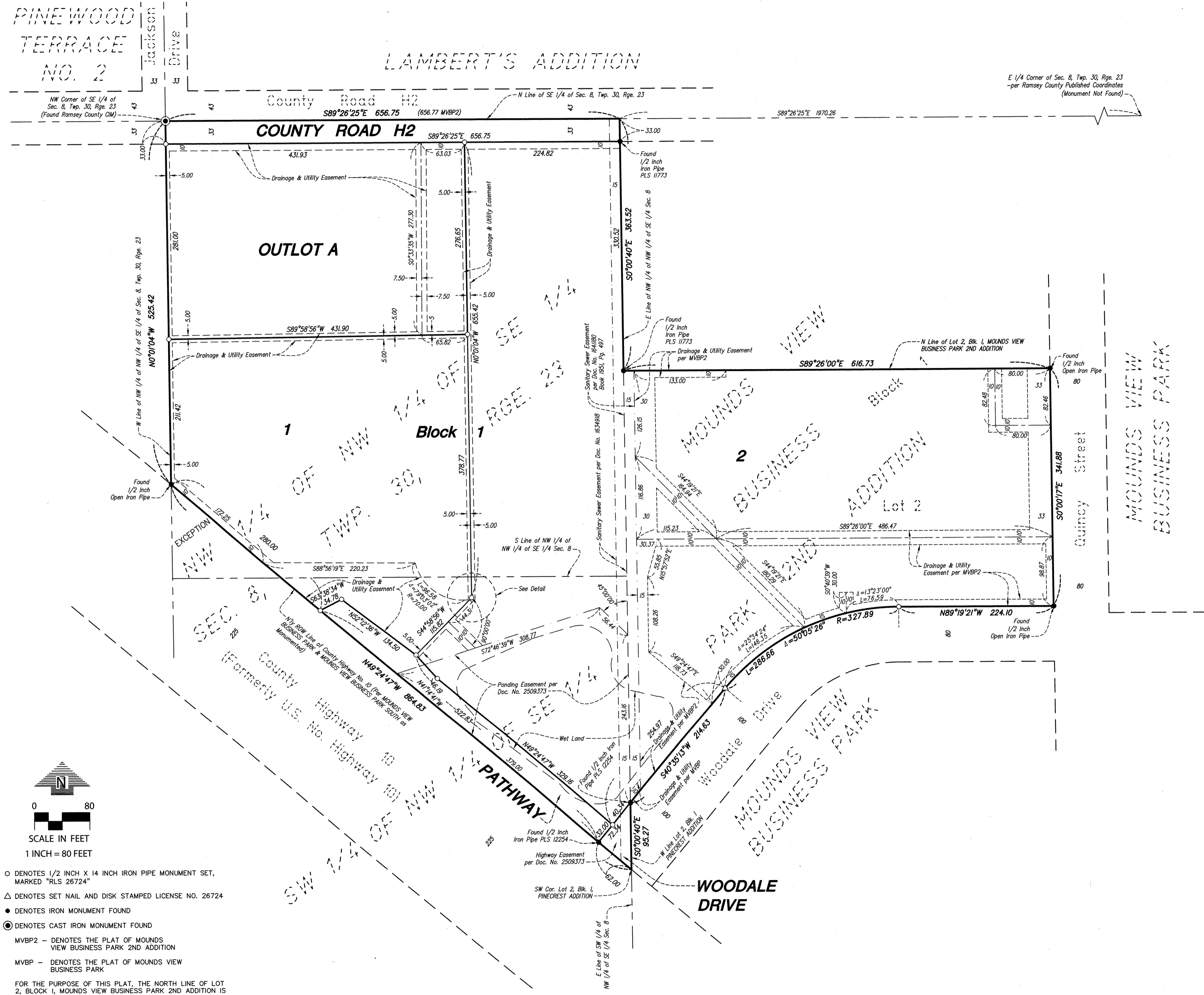
\_\_\_\_\_, Deputy Registrar of Titles

### COUNTY RECORDER, County of Ramsey, State of Minnesota

I hereby certify that this plat of MOUNDS VIEW BUSINESS PARK 3RD ADDITION was filed in the office of the County Recorder for public record on this 14<sup>th</sup> day of NOVEMBER, 2014, at 10:00 o'clock A.M. and was duly filed in Book 126 of Plats, Pages 34 and 35, as Document Number A04534290.

\_\_\_\_\_, Deputy County Recorder

# MOUNDS VIEW BUSINESS PARK 3RD ADDITION



- DENOTES 1/2 INCH X 14 INCH IRON PIPE MONUMENT SET, MARKED "RLS 26724"
- △ DENOTES SET NAIL AND DISK STAMPED LICENSE NO. 26724
- DENOTES IRON MONUMENT FOUND
- DENOTES CAST IRON MONUMENT FOUND
- MVBP2 - DENOTES THE PLAT OF MOUNDS VIEW BUSINESS PARK 2ND ADDITION
- MVBP - DENOTES THE PLAT OF MOUNDS VIEW BUSINESS PARK

FOR THE PURPOSE OF THIS PLAT, THE NORTH LINE OF LOT 2, BLOCK 1, MOUNDS VIEW BUSINESS PARK 2ND ADDITION IS ASSUMED TO HAVE A BEARING OF S89°26'00"E.