

ANNA PLACE

KNOW ALL PERSONS BY THESE PRESENTS: That Abiding Savior Lutheran Church, a Minnesota Non-Profit Corporation, fee owner of the following described property situated in the City of Mounds View, County of Ramsey, State of Minnesota:

Lot 1, Block 1, ABIDING SAVIOR ADDITION, Ramsey County, Minnesota.

Has caused the same to be surveyed and platted as ANNA PLACE and do hereby dedicate or donate to the public for public use forever the drainage and utility easements as shown on this plat.

In witness whereof said Abiding Savior Lutheran Church, a Minnesota Non-Profit Corporation, has caused these presents to be signed by its proper officers this 1st day of October, 2014.

Signed: Abiding Savior Lutheran Church

Charles Munsterman its President
its _____

STATE OF MINNESOTA
COUNTY OF Ramsey

The foregoing instrument was acknowledged before me this 1st day of October, 2014 by Charles Munsterman and _____ of Abiding Savior Lutheran Church, a Minnesota Non-Profit Corporation, on behalf of the corporation.

Mary A. Springer
Mary A. Springer
Notary Public, Ramsey County, Minnesota

My Commission expires January 31, 2015

I, Eric R. Vickaryous, Professional Land Surveyor, do hereby certify that I have surveyed or directly supervised the survey of the property described on this plat; prepared this plat or directly supervised the preparation of this plat; that this plat is a correct representation of the boundary survey; that all mathematical data and labels are correctly designated on this plat; that all monuments depicted on this plat have been correctly set; that all monuments indicated on this plat will be correctly set within one year; that all water boundaries and wet lands, as defined in Minnesota Statutes, Section 505.01, Subd. 3, as of the date of the surveyor's certification are shown and labeled on this plat; and all public ways are shown and labeled on this plat.

Dated this 23rd day of SEPTEMBER, 2014.

Eric R. Vickaryous
Eric R. Vickaryous, Licensed Land Surveyor
Minnesota License Number 44125

STATE OF MINNESOTA
COUNTY OF Anoka

The foregoing instrument was acknowledged before me this 23rd day of SEPTEMBER, 2014, by Eric R. Vickaryous, a Professional Land Surveyor.

Sharon A. Jones
Sharon A. Jones
Notary Public, Anoka County, Minnesota

My Commission expires 1/31/15

City of Mounds View

We do hereby certify that on the 8th day of September, 2014, the City Council of the City of Mounds View, Minnesota, approved this plat.

Joe Heltzer Mayor James E. Eason City Clerk/Administrator

Department of Property Records and Revenue

Pursuant to Minnesota Statutes, Section 505.021, Subd. 9, taxes payable in the year _____ on the land hereinbefore described have been paid. Also, pursuant to Minnesota Statutes, Section 272.12, there are no delinquent taxes and transfer entered this _____ day of _____, 20____.

_____, Director
Department of Property Records and Revenue

By _____, Deputy

County Surveyor

I hereby certify that this plat complies with the requirements of Minnesota Statutes, Section 505.021, and is approved pursuant to Minnesota Statutes, Section 383A.42, this 14 day of November, 2014.

Craig W. Hinzman
Craig W. Hinzman, L.S.
Ramsey County Surveyor

BY: Daniel D. Baar
DANIEL D. BAAR, LAND SURVEYOR
DEPUTY COUNTY SURVEYOR

County Recorder, County of Ramsey, State of Minnesota

I hereby certify that this plat of ANNA PLACE was filed in the office of the County Recorder for public record on this 14th day of NOVEMBER, 2014, at 1:00 o'clock P.M. and was duly filed in Book 126 of Plats, Pages 30 and 31, as Document Number AO4552501.

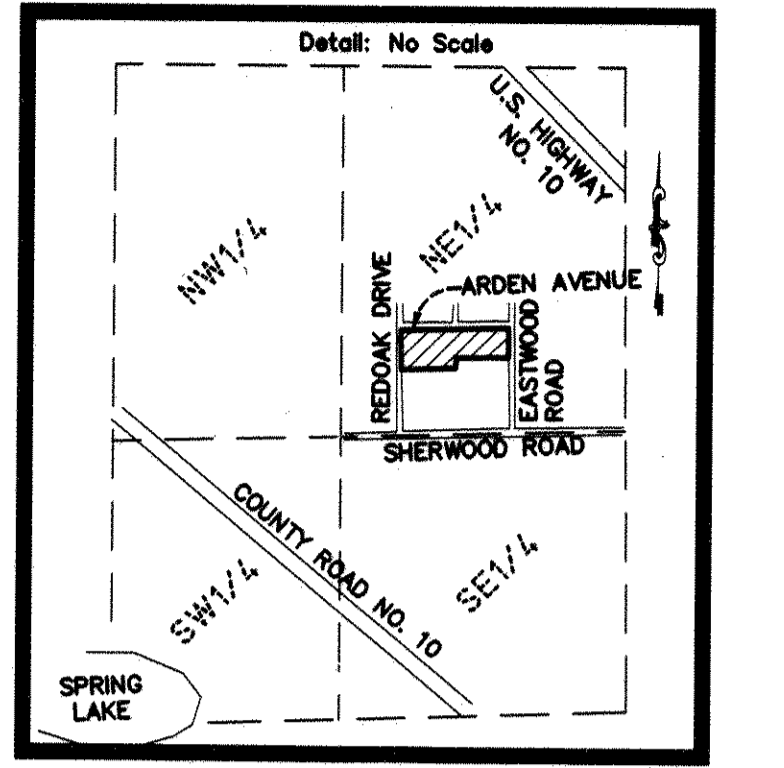
Deputy County Recorder

Copy

ANNA PLACE

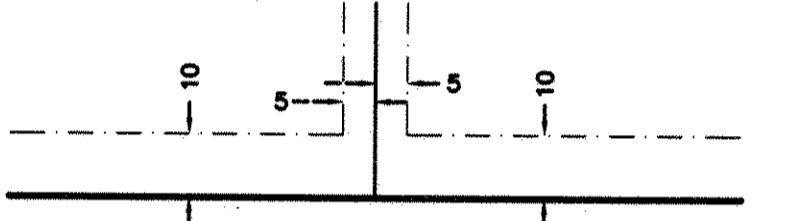
VICINITY MAP

SECTION 6, TOWNSHIP 30, RANGE 23



RAMSEY COUNTY, MINNESOTA

DRAINAGE AND UTILITY EASEMENTS SHOWN THUS:

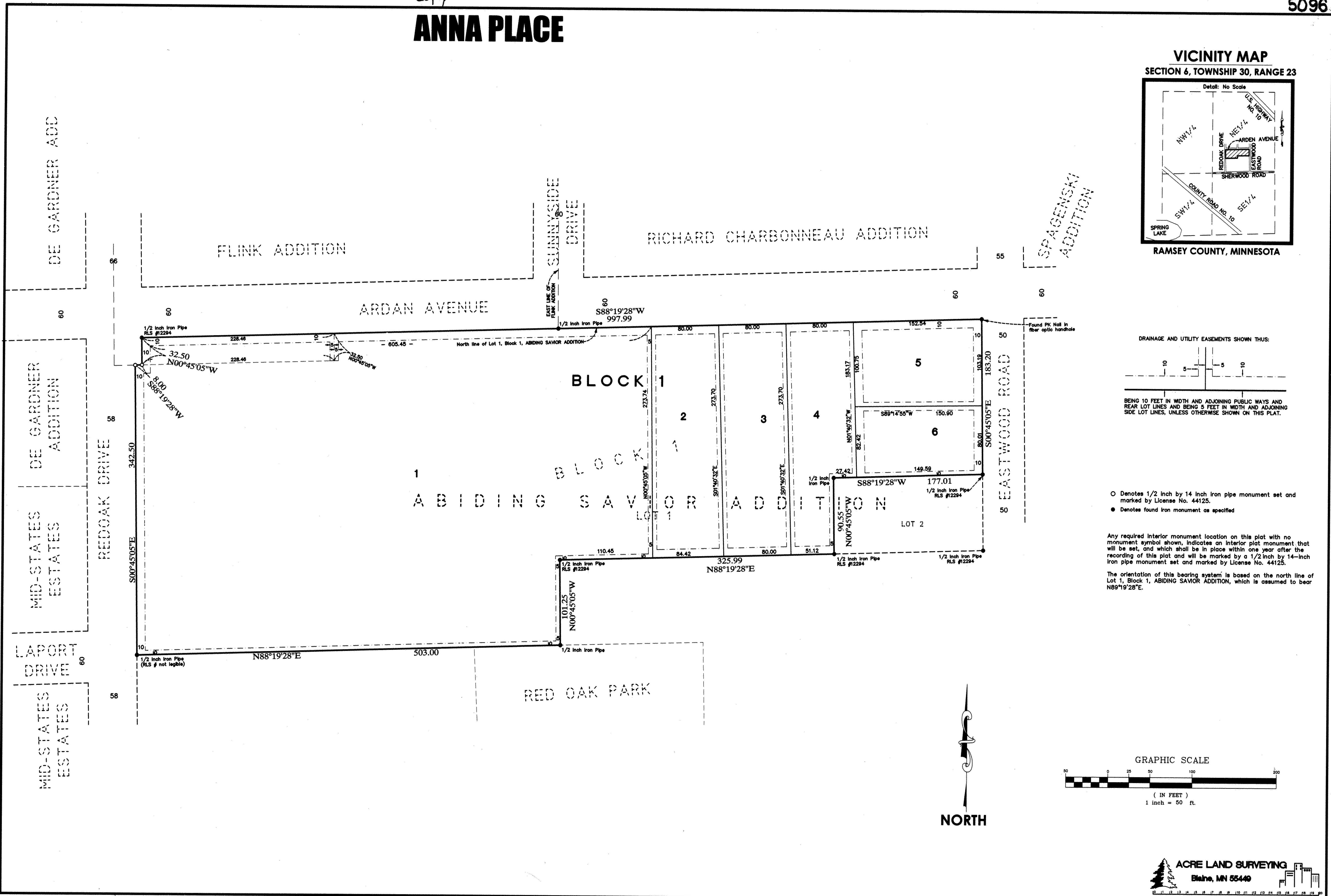
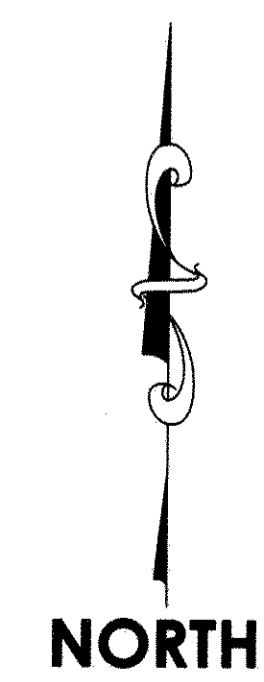
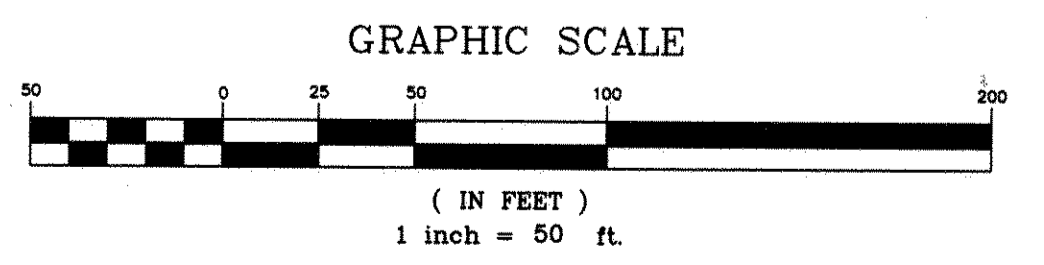


BEING 10 FEET IN WIDTH AND ADJOINING PUBLIC WAYS AND REAR LOT LINES AND BEING 5 FEET IN WIDTH AND ADJOINING SIDE LOT LINES, UNLESS OTHERWISE SHOWN ON THIS PLAT.

- Denotes 1/2 inch by 14 inch iron pipe monument set and marked by License No. 44125.
- Denotes found iron monument as specified

Any required interior monument location on this plat with no monument symbol shown, indicates an interior plot monument that will be set, and which shall be in place within one year after the recording of this plat and will be marked by a 1/2 inch by 14-inch iron pipe monument set and marked by License No. 44125.

The orientation of this bearing system is based on the north line of Lot 1, Block 1, ABIDING SAVIOR ADDITION, which is assumed to bear N89°19'28"E.



ACRE LAND SURVEYING
Blaine, MN 55449