

EDGERTON PLACE

KNOW ALL PERSONS BY THESE PRESENTS: That TTCP, LLC, a Minnesota limited liability company, owner of the following described property situated in the City of Vadnais Heights, County of Ramsey, State of Minnesota:

That part of the North 490.00 feet of the Northeast Quarter of the Southeast Quarter of the Southwest Quarter of Section 29, Township 30, Range 22, lying east of the West 501.61 feet thereof and lying south of the north 33.00 feet thereof, except a seven-tenths (7/10) of an acre at the Northeast corner thereof as described in "165" of Deeds 118, Ramsey County, Minnesota.

Has caused the same to be surveyed and platted as EDGERTON PLACE and does hereby dedicate or donate to the public for public use forever the public way and the drainage and utility easements as shown on this plat.

In witness whereof said TTCP, LLC, a Minnesota limited liability company, has caused these presents to be signed by its proper officer this 29 day of May, 2014.

Signed: TTCP, LLC
Melvin Brown Moore
Melvin Brown Moore, Chief Manager

STATE OF MINNESOTA
COUNTY OF HEMLOCK

The foregoing instrument was acknowledged before me this 29 day of May, 2014 by Melvin Brown Moore, Chief Manager of TTCP, LLC, a Minnesota limited liability company, on behalf of the company.

Timothy A. Nestor
Notary Public, HEMLOCK County, Minnesota

My Commission expires 1-31-2015

I, Joshua P. Schneider, Professional Land Surveyor, do hereby certify that I have surveyed or directly supervised the survey of the property described on this plat; prepared this plat or directly supervised the preparation of this plat; that this plat is a correct representation of the boundary survey; that all mathematical data and labels are correctly designated on this plat; that all monuments depicted on this plat have been correctly set; that all monuments indicated on this plat will be correctly set within one year; that all water boundaries and wet lands, as defined in Minnesota Statutes, Section 505.01, Subd. 3, as of the date of the surveyor's certification are shown and labeled on this plat; and all public ways are shown and labeled on this plat.

Dated this 22nd day of May, 2014.

Joshua P. Schneider
Joshua P. Schneider, Licensed Land Surveyor
Minnesota License Number 44655

STATE OF MINNESOTA
COUNTY OF ANOKA

The foregoing instrument was acknowledged before me this 22nd day of May, 2014, by Joshua P. Schneider, a Professional Land Surveyor.

Alysa R. Kittelson
Notary Public, ANOKA County, Minnesota

My Commission expires 1-31-2015

City of Vadnais Heights

We do hereby certify that on the 17 day of July, 2014, the City Council of the City of Vadnais Heights, Minnesota, approved this plat. Also, the conditions of Minnesota Statutes, Section 505.03, Subd. 2, have been fulfilled.

Handwritten signature Mayor *Keith Weir* City Clerk

Department of Property Records and Revenue

Pursuant to Minnesota Statutes, Section 505.021, Subd. 9, taxes payable in the year 2014 on the land hereinbefore described have been paid. Also, pursuant to Minnesota Statutes, Section 272.12, there are no delinquent taxes and transfer entered this 31st day of July, 2014.

Mark Oswald Director
Department of Property Records and Revenue

By *Mary Kay Lempke* Deputy
County Surveyor

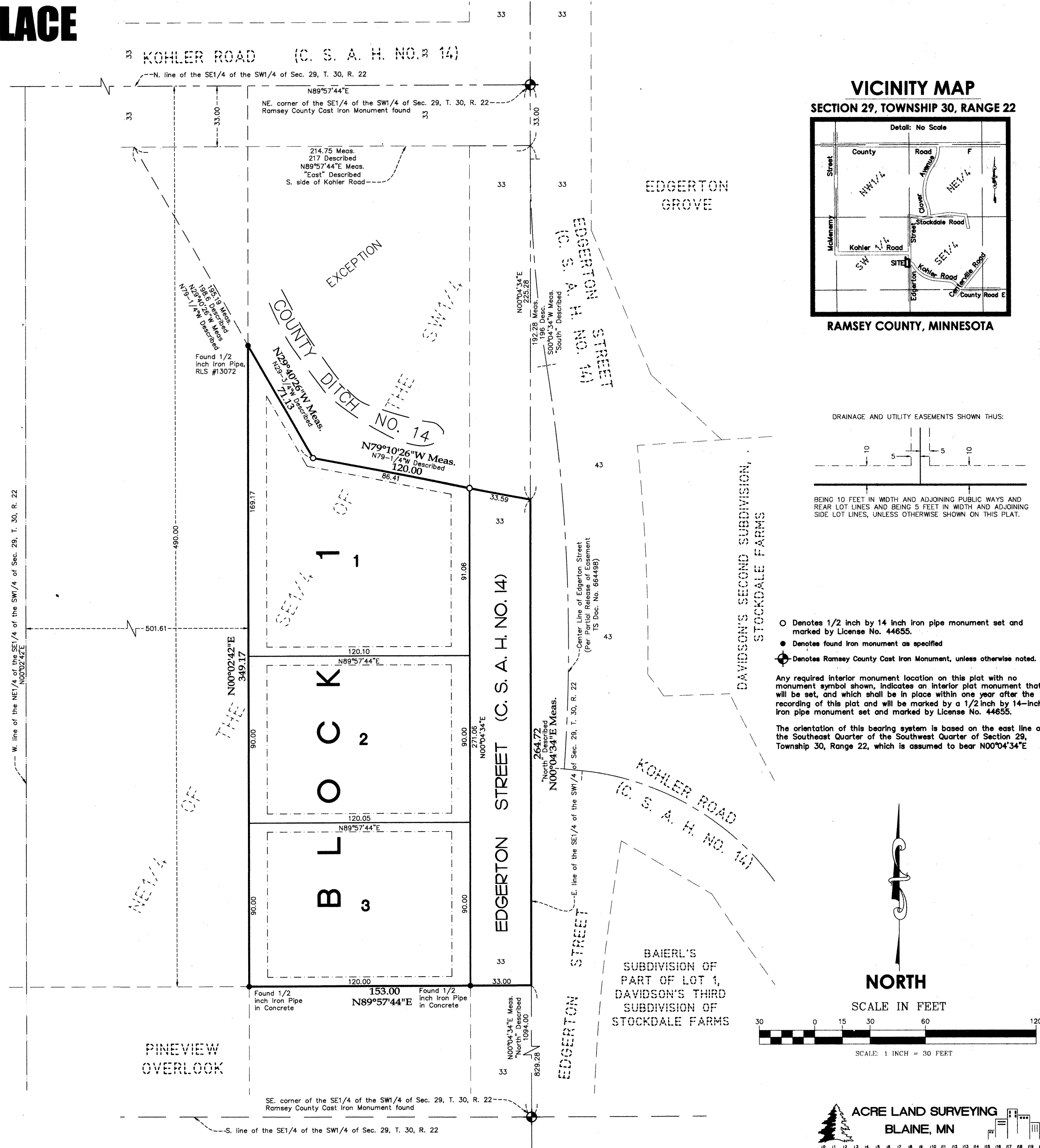
I hereby certify that this plat complies with the requirements of Minnesota Statutes, Section 505.021, and is approved pursuant to Minnesota Statutes, Section 383A.42, this 31st day of July, 2014.

Craig W. Hinzman
Craig W. Hinzman, L.S.
Ramsey County Surveyor

County Recorder, County of Ramsey, State of Minnesota

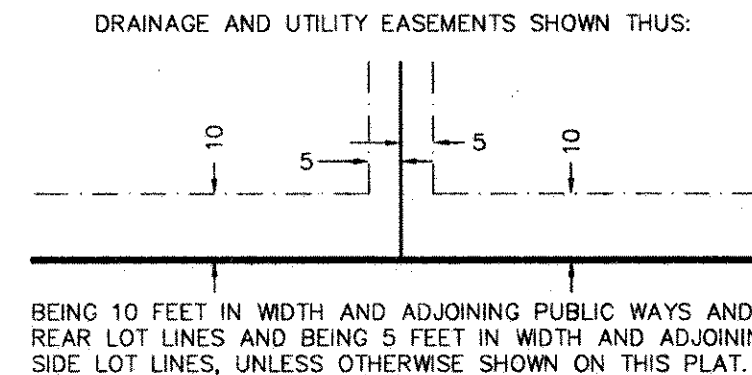
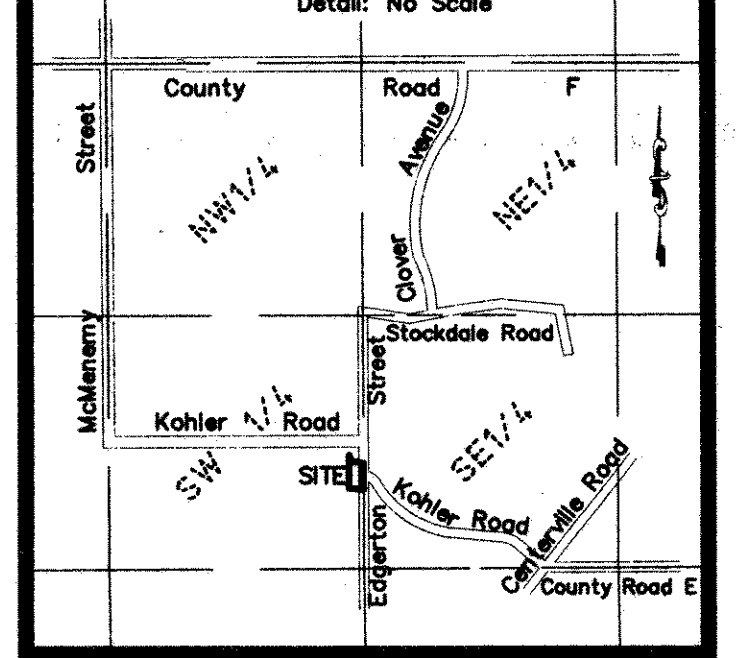
I hereby certify that this plat of EDGERTON PLACE was filed in the office of the County Recorder for public record on this 1st day of AUGUST, 2014, at 12:00 o'clock P.M. and was duly filed in Book 126 of Plats, Page 24, as Document Number 004519694.

Deputy County Recorder



VICINITY MAP

SECTION 29, TOWNSHIP 30, RANGE 22



- Denotes 1/2 inch by 14 inch iron pipe monument set and marked by License No. 44655.
 - Denotes found iron monument as specified.
 - ⊕ Denotes Ramsey County Cast Iron Monument, unless otherwise noted.
- Any required interior monument location on this plat with no monument symbol shown, indicates an interior plot monument that will be set, and which shall be in place within one year after the recording of this plat and will be marked by a 1/2 inch by 14-inch iron pipe monument set and marked by License No. 44655.
- The orientation of this bearing system is based on the east line of the Southeast Quarter of the Southwest Quarter of Section 29, Township 30, Range 22, which is assumed to bear N00°04'34"E

