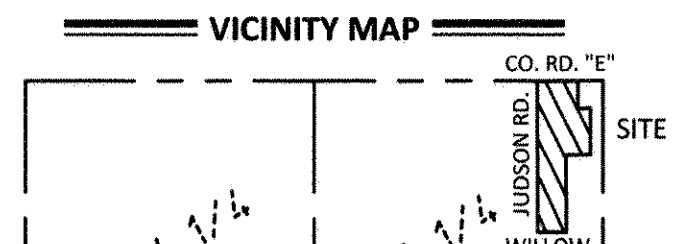
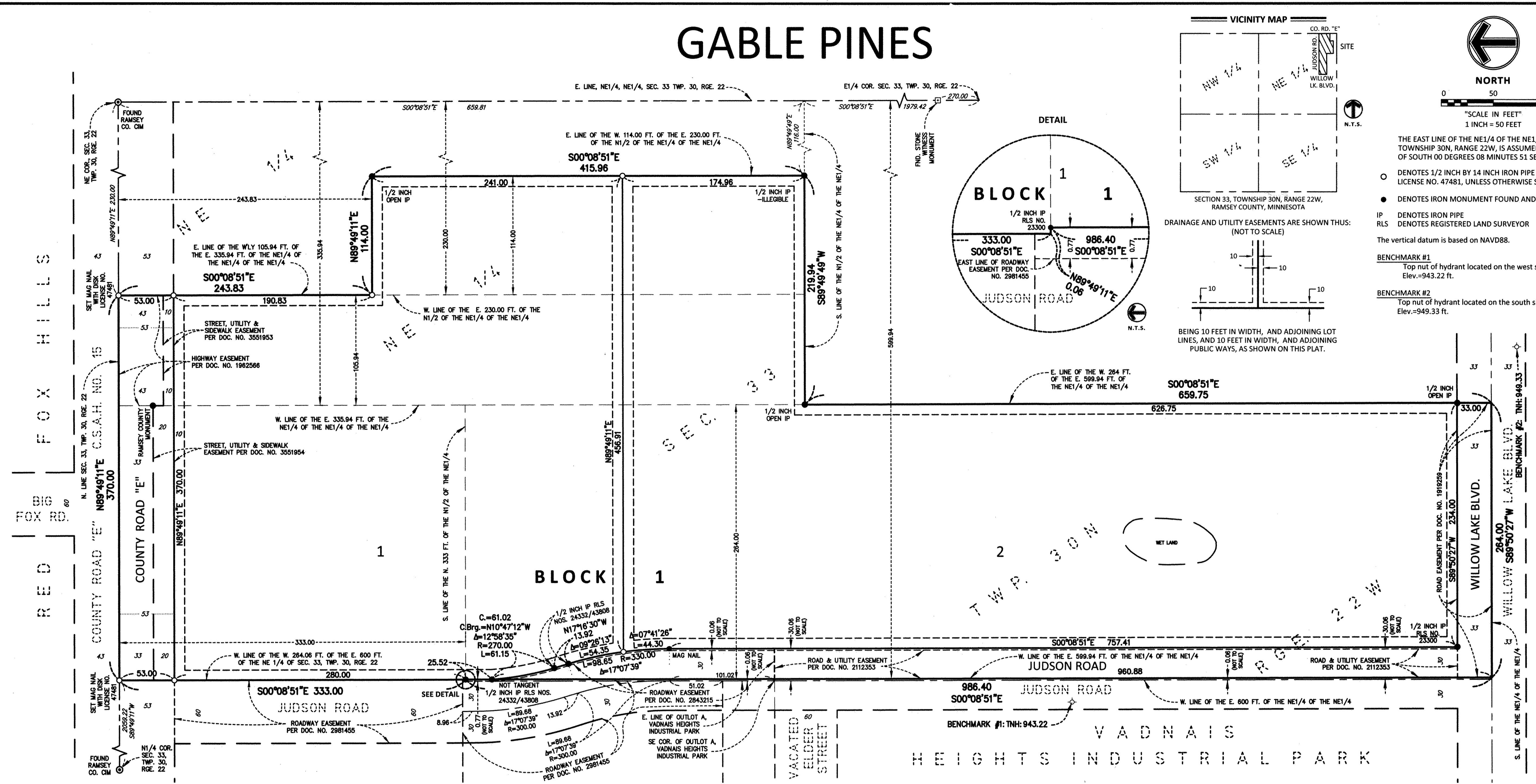


GABLE PINES



NORTH

0 50 100
"SCALE IN FEET"
1 INCH = 50 FEET

THE EAST LINE OF THE NE1/4 OF SECTION 33, TOWNSHIP 30N, RANGE 22W, IS ASSUMED TO HAVE A BEARING OF SOUTH 00 DEGREES 08 MINUTES 51 SECONDS EAST.

○ DENOTES 1/2 INCH BY 14 INCH IRON PIPE SET AND MARKED BY LICENSE NO. 47481, UNLESS OTHERWISE SHOWN.

● DENOTES IRON MONUMENT FOUND AND MARKED AS SHOWN.

IP DENOTES IRON PIPE
RLS DENOTES REGISTERED LAND SURVEYOR

The vertical datum is based on NAVD88.

BENCHMARK #1
Top nut of hydrant located on the west side of Judson Road.
Elev.=943.22 ft.

BENCHMARK #2
Top nut of hydrant located on the south side of Willow Lake Blvd.
Elev.=949.33 ft.

DRAINAGE AND UTILITY EASEMENTS ARE SHOWN THUS:
(NOT TO SCALE)

BEING 10 FEET IN WIDTH, AND ADJOINING LOT LINES, AND 10 FEET IN WIDTH, AND ADJOINING PUBLIC WAYS, AS SHOWN ON THIS PLAT.

KNOW ALL MEN BY THESE PRESENTS: That Reell Precision Manufacturing Corporation, a Minnesota corporation, has caused these presents to be signed by its proper officer this 31 day of March, 2014.

The West 264 feet of the East 599.94 feet of the Northeast Quarter of the Northeast Quarter (NE 1/4 of NE 1/4) of Section 33, Township 30 North, Range 22 West, Ramsey County, Minnesota, except the North 333 feet thereof;

And that Gable Pines, LLC, a Minnesota limited liability company, fee owner of the following described property situated in the City of Vadnais Heights, County of Ramsey, State of Minnesota:

The North 333 feet of the West 264.06 feet of the East 600 feet of the Northeast Quarter of Section 33, Township 30 North, range 22 West, subject to County Road E, Ramsey County, Minnesota.

AND

The Westerly 105.94 feet of the East 335.94 feet of the Northeast Quarter of the Northeast Quarter of the Northeast Quarter of Section 33, Township 30 North, Range 22, Ramsey County, Minnesota;

AND

That part of the West 114.00 feet of the East 230.00 feet of the North Half of the Northeast Quarter of the Northeast Quarter of Section 33, Township 30 North, Range 22 West, Ramsey County, Minnesota, lying South of the North 243.83 feet thereof.

Have caused the same to be surveyed and platted as GABLE PINES, and do hereby dedicate to the public for public use forever the public ways and the drainage and utility easements as shown on this plat.

In witness whereof said Reell Precision Manufacturing Corporation, a Minnesota corporation, has caused these presents to be signed by its proper officer this 31 day of March, 2014.

Signed: Reell Precision Manufacturing Corporation, a Minnesota corporation
[Signature] as CEO/President

STATE OF MINNESOTA
COUNTY OF Ramsey

The foregoing instrument was acknowledged before me this 31 day of March, 2014 by
Shari Erdman as V.P. of HR of Reell Precision Manufacturing Corporation, a Minnesota corporation, on behalf of the corporation.

Shari Erdman Notary Public, Ramsey County, Minnesota
My Commission Expires January 31, 2016

In witness whereof said Gable Pines, LLC, a Minnesota limited liability company, has caused these presents to be signed by its proper officer this 1st day of April, 2014.

Signed: Gable Pines, LLC, a Minnesota limited liability company
Rebecca Nelson as Chief Manager

STATE OF MINNESOTA
COUNTY OF Ramsey

The foregoing instrument was acknowledged before me this 1st day of April, 2014 by
Rebecca Nelson as Chief Manager of Gable Pines, LLC, a Minnesota limited liability company, on behalf of the company.

Joan R. Lenzmeier Notary Public, Ramsey County, Minnesota
My Commission Expires 1-31-2016

I, Marcus F. Hampton, Professional Land Surveyor, do hereby certify that I have surveyed or directly supervised the survey of the property described on this plat; prepared this plat or directly supervised the preparation of this plat; that this plat is a correct representation of the boundary survey; that all mathematical data and labels are correctly designated on this plat; that all monuments indicated on this plat have been correctly set; that all water boundaries and wet lands, as defined in Minnesota Statutes, Section 505.01, Subd. 3, as of the date of this certificate are shown and labeled on this plat; and all public ways are shown and labeled on this plat.

Dated this 2 day of October, 2012

[Signature]
Marcus F. Hampton, Professional Land Surveyor
Minnesota License No. 47481

STATE OF MINNESOTA
COUNTY OF Hennepin

The foregoing instrument was acknowledged before me this 2nd day of October, 2012, by Marcus F. Hampton, a Professional Land Surveyor.

[Signature] Notary Public, Hennepin County, Minnesota
My Commission Expires February 21, 2015

CITY OF VADNAIS HEIGHTS

We hereby certify that on the 4th day of April, 2012 the City Council of the City of Vadnais Heights, Minnesota, approved this plat. Also, the conditions of Minnesota Statutes, Section 505.03, Subd. 2, have been fulfilled.

[Signature] Mayor
[Signature] Clerk

DEPARTMENT OF PROPERTY RECORDS AND REVENUE

Pursuant to Minnesota Statutes, Section 505.021, Subd. 9, taxes payable in the year 2014 on the land hereinbefore described have been paid. Also, pursuant to Minnesota Statutes, Section 272.12, there are no delinquent taxes and transfer entered this 14th day of May, 2014.

Mark Orndall Director By: *Nykon Long* Deputy
Department of Property Records and Revenue

COUNTY SURVEYOR

I hereby certify that this plat complies with the requirements of Minnesota Statutes, Section 505.021, and is approved pursuant to Minnesota Statutes, Section 383A.42, this 14th day of May, 2014.

Craig W. Higman
Craig W. Higman, LS
Ramsey County Surveyor

COUNTY RECORDER, County of Ramsey, State of Minnesota

I hereby certify that this plat of GABLE PINES was filed in the office of the County Recorder for public record on this 13th day of August, 2014 at 12 o'clock P.M. and was duly filed in Book 126 of Plats, Page 10 as Document Number A04521881.

_____, Deputy County Recorder