

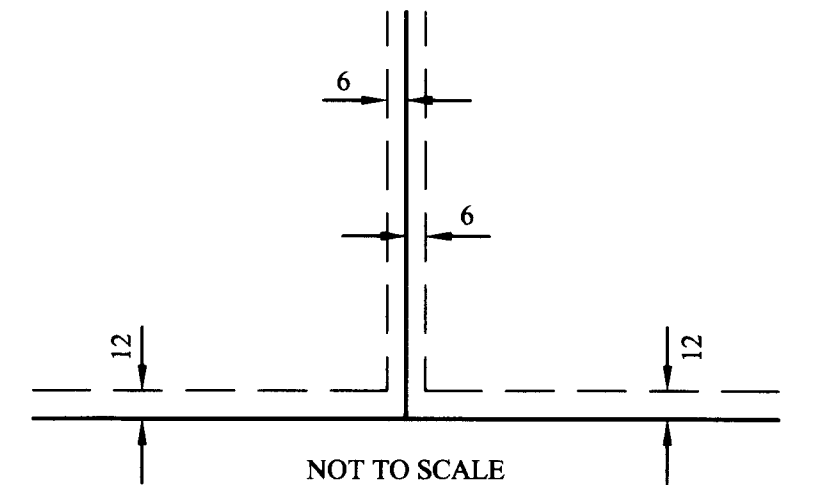
# JOSEPHINE HEIGHTS

For the purpose of this plat the south line of Lots 23, 24 and 25, SAINT PAUL PARK, are assumed to bear South 89 degrees 53 minutes 36 seconds East

Any required interior monument location on this plat with no monument symbol shown, indicates an interior plat monument that will be set, and which shall be in place within one year after the recording of this plat

- Denotes a 1/2 inch by 14 inch iron pipe set in the ground and marked by License No. 40344
- Denotes a found iron monument
- ⊙ Denotes a Found Cast-Iron-Monument unless otherwise noted

DRAINAGE AND UTILITY EASEMENTS ARE SHOWN THUS:



Being 6 feet in width and adjoining lot lines, unless otherwise indicated, and 12 feet in width and adjoining public ways, unless otherwise indicated, as shown on this plat.

Drainage and Utility Easements over all of Outlot A and B

KNOW ALL MEN BY THESE PRESENTS: That Landmark 6 of Roseville, LLC, a Minnesota limited liability company, fee owner, of the following described property situated in the City of Roseville, County of Ramsey, State of Minnesota:

The West one-third of Lot 23, Saint Paul Park except the North 400 feet thereof. That part of Lot 24, Saint Paul Park, lying East of the West 44 feet except the North 400 feet.

Has caused the same to be surveyed and platted as JOSEPHINE HEIGHTS and does hereby donate and dedicate to the public use forever the public way and the easements for drainage and utility purposes throughout Outlots A and B and as shown on this plat.

In witness whereof said Landmark 6 of Roseville, LLC, a Minnesota limited liability company, has caused these presents to be signed by its proper officer this 14<sup>th</sup> day of AUGUST, 2013.

Signed: Landmark 6 of Roseville, LLC  
*Nathan Fair*  
Nathan Fair, Chief Manager

STATE OF MINNESOTA  
COUNTY OF HENNEPIN

The foregoing instrument was acknowledged before me this 14<sup>th</sup> day of AUGUST, 2013, by NATHAN FAIR, Chief Manager, of Landmark 6 of Roseville, LLC, a Minnesota limited liability company, on behalf of the company.

*Richard H. Larden*  
Notary Public, Hennepin County, Minnesota  
My Commission Expires: JAN 21<sup>st</sup> 2015

*Richard H. Larden*  
Printed Name

I, David B. Pemberton, Professional Land Surveyor, do hereby certify that I have surveyed or directly supervised the survey of the property described on this plat; prepared this plat or directly supervised the preparation of this plat; that this plat is a correct representation of the boundary survey; that all mathematical data and labels are correctly designated on this plat; that all monuments on the exterior boundary have been set and that all other monuments indicated on this plat will be correctly set within one year; that all water boundaries and wet lands as defined in Minnesota Statutes, Section 505.01, Subd.3, as of the date of the surveyor's certification are shown and labeled on this plat; and all public ways are shown and labeled on this plat.

Dated this 7<sup>th</sup> day of AUGUST, 2013.

*David B. Pemberton*  
David B. Pemberton, Professional Land Surveyor  
Minnesota License No. 40344

STATE OF MINNESOTA  
COUNTY OF HENNEPIN

The foregoing instrument was acknowledged before me this 7<sup>th</sup> day of August, 2013, by David B. Pemberton, Professional Land Surveyor.

*Stephanie Marie Moline Grob*  
Notary Public, Hennepin County, Minnesota  
My Commission Expires: JANUARY 31, 2016

*Stephanie Marie Moline Grob*  
Printed Name

CITY OF ROSEVILLE, MINNESOTA

We do hereby certify that on the 22<sup>nd</sup> day of July, 2013, the City Council of the City of Roseville, Minnesota, approved this plat. Also, the conditions of Minnesota Statutes, Section 505.03, Subd. 2, have been met.

*[Signature]* Mayor

*[Signature]* Clerk

DEPARTMENT OF PROPERTY RECORDS AND REVENUE

Pursuant to Minnesota Statutes, Section 505.021, Subd. 9, taxes payable in the year 2013 on the land hereinbefore described have been paid. Also, pursuant to Minnesota Statutes, Section 272.12, there are no delinquent taxes and transfer entered on this 13<sup>th</sup> day of Aug, 2013.

*M. Paul Oswald*, Director

By: *[Signature]*, Deputy

COUNTY SURVEYOR

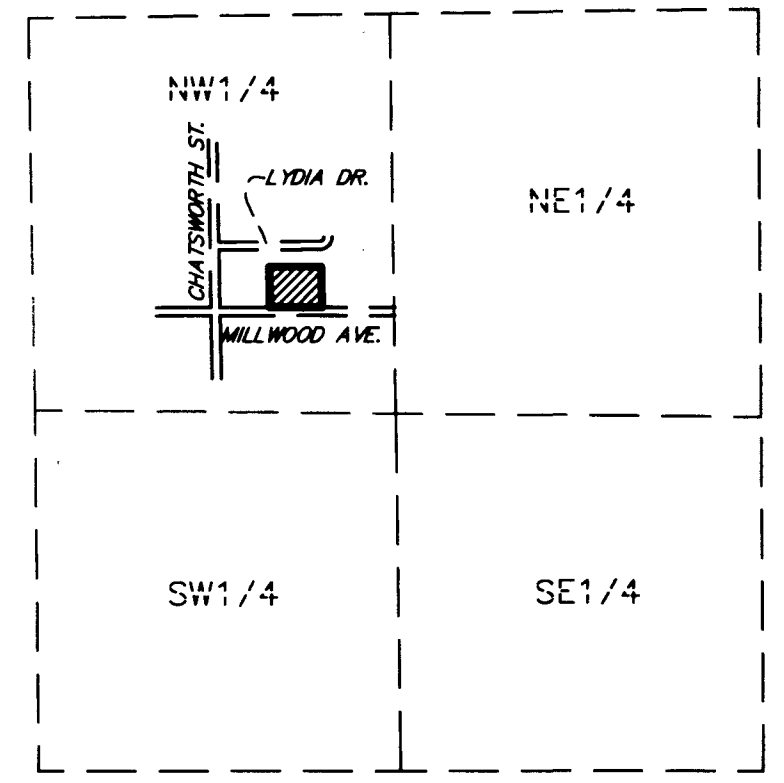
I hereby certify that this plat complies with the requirements of Minnesota Statutes, Section 505.021, and is approved pursuant to Minnesota Statutes, Section 383A.42, this 14<sup>th</sup> day of AUGUST, 2013.

*Craig W. Higman*  
Craig W. Higman, L.S.  
Ramsey County Surveyor

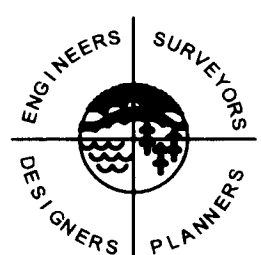
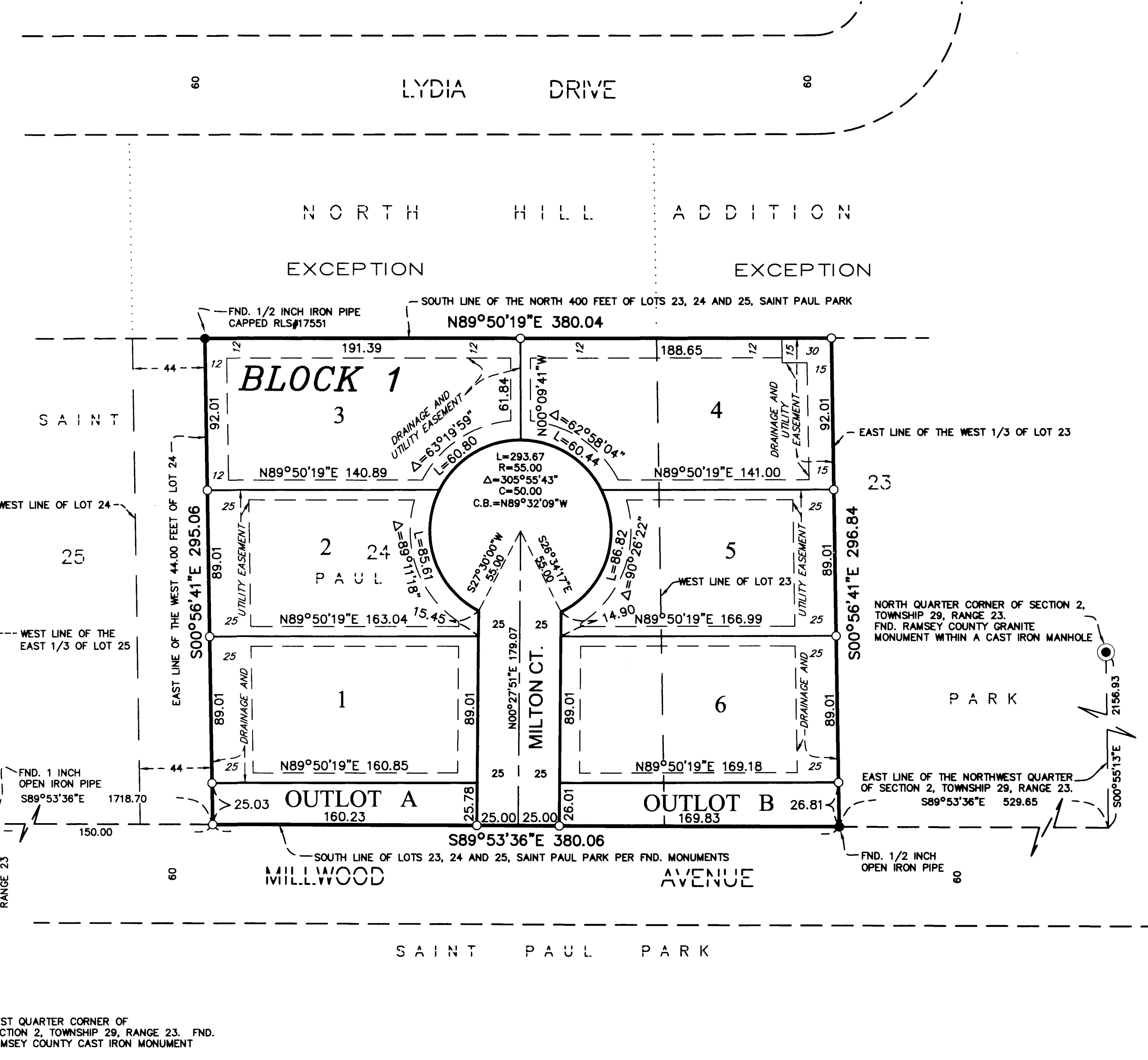
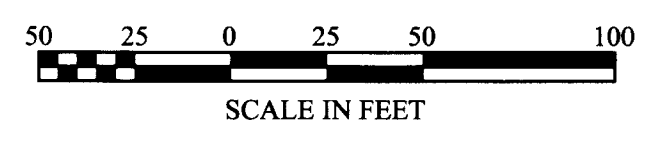
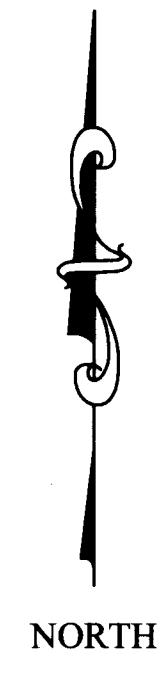
REGISTRAR OF TITLES, County of Ramsey, State of Minnesota

I hereby certify that this plat of JOSEPHINE HEIGHTS was filed in the office of the Registrar of Titles for public record on this 14<sup>th</sup> day of AUGUST, 2013, at 1 o'clock P.M. and was duly filed in Book 48 of Plats, Page 34, as Document Number 2220088.

Deputy Registrar of Titles



VICINITY MAP  
NO SCALE



SATHRE-BERGQUIST, INC.