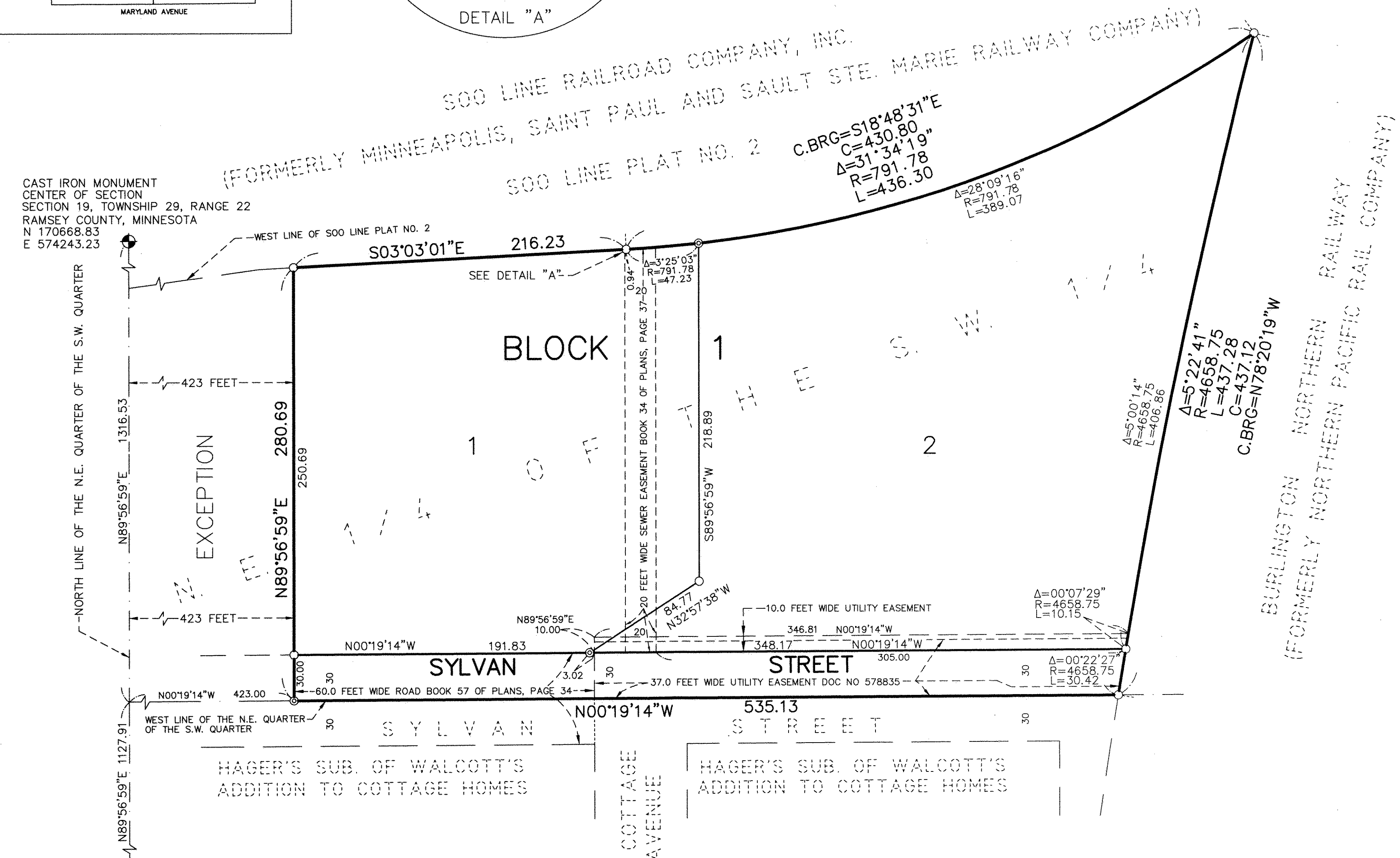
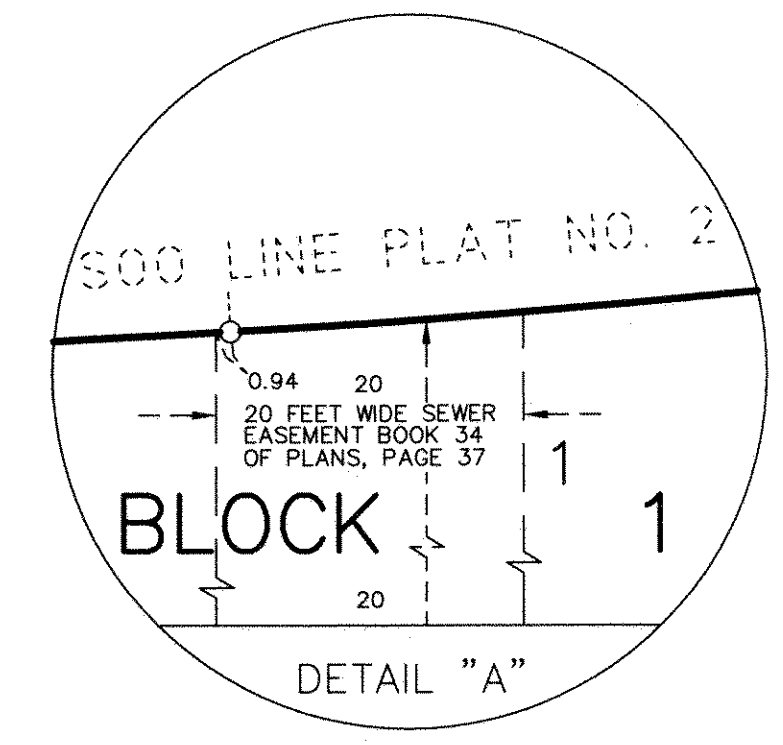
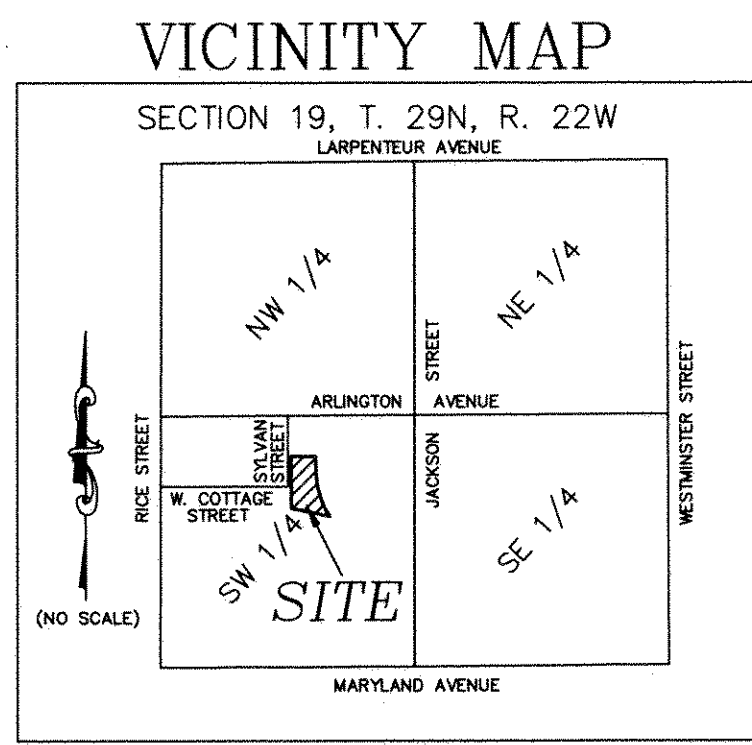


# CAPPIE ADDITION



KNOW ALL MEN BY THESE PRESENTS: That Cappie's Trucking, Inc., a Minnesota corporation, owner, and Anchor Bank, N.A., a national banking corporation, mortgagee, of the following described property situated in the City of Saint Paul, County of Ramsey, State of Minnesota:

That part Westerly of Minneapolis, Saint Paul and Sault Ste. Marie Railway Company right-of-way and Northerly of the Northern Pacific Rail Company right-of-way, of the Northeast Quarter of the Southwest Quarter of Section 19, Township 29, Range 22, EXCEPT the North 423 feet thereof. Subject to an easement in favor of the City of Saint Paul, as set forth in the instrument recorded in Book 34 of Plans, page 37 of Ramsey County Records.

Have caused the same to be surveyed and platted as CAPPIE ADDITION and do hereby dedicate or donate to the public for public use forever the public way and utility easement as shown on this plat.

In witness whereof said Cappie's Trucking, Inc., a Minnesota corporation, has caused these presents to be signed by its proper officer this 20 day of December, 2012.

Signed: Cappie's Trucking, Inc.  
*Dale R. Capistrant*  
 Dale R. Capistrant, President

STATE OF MINNESOTA  
 COUNTY OF Washington

The foregoing instrument was acknowledged before me this 20 day of December, 2012, by Dale Capistrant, President, of Cappie's Trucking, Inc., a Minnesota corporation, on behalf of the corporation.

*Rebecca L. Hecker*  
 Rebecca L. Hecker  
 Notary Public, Washington County, Minnesota  
 My Commission Expires January 31, 2014

In witness whereof said Anchor Bank, N.A., a national banking corporation, has caused these presents to be signed by its proper officer this 20 day of December, 2012.

Signed: Anchor Bank, N.A.  
*Brooke Dusk*  
 Brooke Dusk, its Business Banker

STATE OF MINNESOTA  
 COUNTY OF Washington

The foregoing instrument was acknowledged before me this 20 day of December, 2012, by Brooke Dusk, Business Banker of Anchor Bank, N.A., a national banking corporation, on behalf of the national banking corporation.

*Rebecca L. Hecker*  
 Rebecca L. Hecker  
 Notary Public, Washington County, Minnesota  
 My Commission Expires January 31, 2014

I, Jonathan L. Faraci, Professional Land Surveyor, do hereby certify that I have surveyed or directly supervised the survey of the property described on this plat; prepared this plat or directly supervised the preparation of this plat; that this plat is a correct representation of the boundary survey; that all mathematical data and labels are correctly designated on this plat; that all monuments depicted on this plat have been correctly set; that all water boundaries and wet lands, as defined in Minnesota Statutes, Section 505.01, Subd. 3, as of the date of the surveyor's certification are shown and labeled on this plat; and all public ways are shown and labeled on this plat.

Dated this 20 day of December, 2012.  
*Jonathan L. Faraci*  
 Jonathan L. Faraci, Professional Land Surveyor  
 Minnesota License No. 16464

STATE OF MINNESOTA  
 COUNTY OF Washington

The foregoing Surveyor's Certificate was acknowledged before me this 20 day of December, 2012, by Jonathan L. Faraci, a Licensed Land Surveyor.

*Rebecca L. Hecker*  
 Rebecca L. Hecker  
 Notary Public, Washington County, Minnesota  
 My Commission Expires January 31, 2014

City of Saint Paul  
 I do hereby certify that on the 9 day of January, 2013, the City Council of the City of Saint Paul, Minnesota, approved this plat. Also, the conditions of Minnesota Statutes, Section 505.03, Subd. 2, have been fulfilled.

*Shari Moore*  
 Shari Moore  
 City Clerk

County Surveyor  
 I hereby certify that this plat complies with the requirements of Minnesota Statutes, Section 505.021, and is approved pursuant to Minnesota Statutes, Section 383A.42, this 28 day of February, 2013.

*Craig W. Hinzman*  
 Craig W. Hinzman, L.S.  
 Ramsey County Surveyor

Registrar of Titles, County of Ramsey, State of Minnesota  
 I hereby certify that this plat of CAPPIE ADDITION was filed in the office of the Registrar of Titles for public record on this 28 day of FEBRUARY, 2013 at 4 o'clock P.M. and was duly filed in Book 48 of Plats, Page 32, as Document Number 2207518.

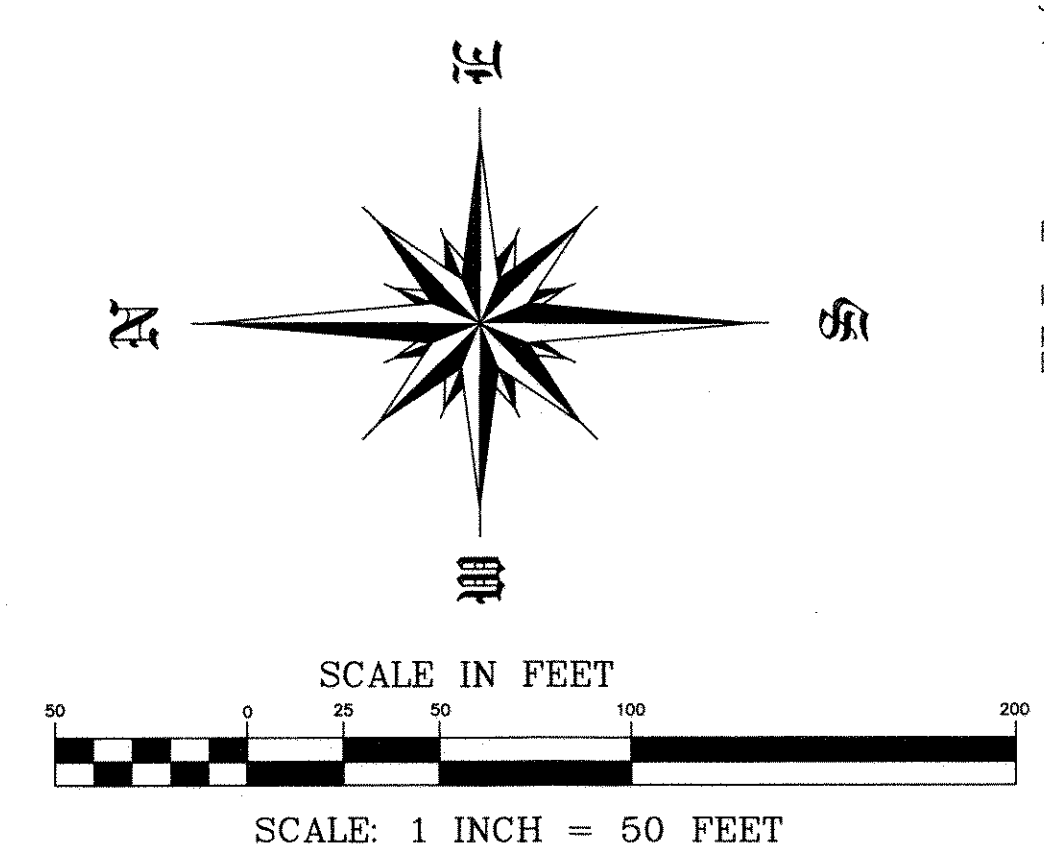
Deputy Registrar of Titles

Department of Property Records and Revenue  
 Pursuant to Minnesota Statutes, Section 505.021, Subd. 9, taxes payable in the year 2012 on the land hereinbefore described have been paid. Also, pursuant to Minnesota Statutes, Section 272.12, there are no delinquent taxes and transfer entered this 20 day of December, 2012.

*Mark Oswald*  
 Mark Oswald, Director  
 Department of Property Records and Revenue  
 By *Mary Kay Simpson*, Deputy

- Legend
- Denotes 12 inch long Common Spike with washer stamped R.L.S. 16464 Monument set.
  - ⊙ Denotes PK nail set with stainless steel marker stamped R.L.S. 16464.
  - ⊕ Denotes City of Saint Paul's Cast Iron Monument.

BASIS OF BEARINGS: RAMSEY COUNTY COORDINATE SYSTEM, NAD83, 1986 ADJUSTMENT.  
 COORDINATES SHOWN ARE RAMSEY COUNTY COORDINATES, NAD83, 1986 ADJUSTMENT.



LAKE & LAND SURVEYING, INC.  
 1200 CENTRE POINTE CURVE, STE. 275  
 MENDOTA HEIGHTS, MINNESOTA, 55120  
 PHONE: 651-776-6211