

CENTRE PLACE 2ND ADDITION

KNOW ALL MEN BY THESE PRESENTS: That Retail Investments I, LLC, a Minnesota Limited Liability Company, owner of the following described property situated in the City of Little Canada, County of Ramsey, State of Minnesota:

Lot 1, Block 1, except the most Westerly 10 feet thereof;

AND:

Lot 2, Block 1;

AND:

Outlots A, B and C; all in Centre Place;

Together with:

That part of the Southwest Quarter of the Southwest Quarter of Section 6, Township 29 North, Range 22 West, which lies Westerly of Lots 1 and 2, Block 1, Centre Place, and Easterly of the Southerly extension of the most Westerly line of said Lot 2.

Has caused the same to be surveyed and platted as CENTRE PLACE 2ND ADDITION and does hereby dedicate the easements as shown on this plat for drainage and utility purposes.

In witness whereof said Retail Investments I, LLC, a Minnesota Limited Liability Company, has caused these presents to be signed by its proper officer this 22 day of December, 2008.

Signed, Retail Investments I, LLC

Manager

STATE OF Minnesota

COUNTY OF Hennepin

The foregoing instrument was acknowledged before me this 22 day of December, 2008, by John P. Jensen, Manager of Retail Investments I, LLC, a Minnesota Limited Liability Company, on behalf of the company.

Notary Public, Hennepin County, Minnesota

My Commission Expires 12/31/09

LAND SURVEYOR

I, Richard L. Licht, Professional Land Surveyor, do hereby certify that I have surveyed or directly supervised the survey of the property described on this plat; prepared this plat or directly supervised the preparation of this plat; that this plat is a correct representation of the boundary survey; that all mathematical data and labels are correctly designated on this plat; that all monuments depicted on this plat have been correctly set; that all water boundaries and wet lands, as defined in Minnesota Statutes, Section 505.01, Subd. 3, as of the date of the surveyor's certification are shown and labeled on this plat; and all public ways are shown and labeled on this plat.

Dated this 26th day of November, 2008.

Richard L. Licht, Professional Land Surveyor
Minnesota License No. 26724

STATE OF MINNESOTA
COUNTY OF HENNEPIN

The foregoing Surveyor's Certificate was acknowledged before me this 26th day of November, 2008, by Richard L. Licht, a Licensed Land Surveyor.

Notary Public, Hennepin County, Minnesota

My Commission Expires January 31, 2009

CITY OF LITTLE CANADA, MINNESOTA
We do hereby certify that on the 24th day of January, 2009, the City Council of the City of Little Canada, Minnesota, approved this plat. Also, the conditions of Minnesota Statutes, Section 505.03, Subd. 2, have been fulfilled.

Signed: [Signature] Mayor
Attest: [Signature] City Administrator

DEPARTMENT OF PROPERTY RECORDS AND REVENUE

Pursuant to Minnesota Statutes, Section 505.021, Subd. 9, taxes payable in the year 2008 on the land hereinbefore described have been paid. Also, pursuant to Minnesota Statutes, Section 272.12, there are no delinquent taxes and transfer entered this 22 day of December, 2008.

Mark E. Oswald, Director
Department of Property Records and Revenue

By [Signature], Deputy

COUNTY SURVEYOR

I hereby certify that this plat complies with the requirements of Minnesota Statutes, Section 505.021, and is approved pursuant to Minnesota Statutes, Section 383A.42, this 22nd day of December, 2008.

David D. Claypool, P.L.S.
Ramsey County Surveyor

COUNTY RECORDER, COUNTY OF RAMSEY, STATE OF MINNESOTA

I hereby certify that this plat of CENTRE PLACE 2ND ADDITION was filed in the office of the County Recorder for public record on this 22nd day of December, 2008, at 4:00 o'clock P.M. and was duly filed in Book 124 of Plats, Page 6, as Document Number 4132662.

Deputy County Recorder

REGISTRAR OF TITLES, COUNTY OF RAMSEY, STATE OF MINNESOTA

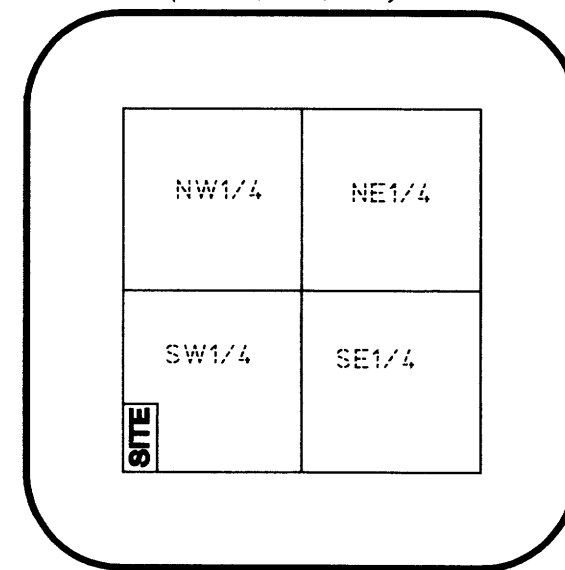
I hereby certify that this plat of CENTRE PLACE 2ND ADDITION was filed in the office of the Registrar of Titles for public record on this 22nd day of December, 2008, at 4:00 o'clock P.M. and was duly filed in Book

47 of Plats, Page 44, as

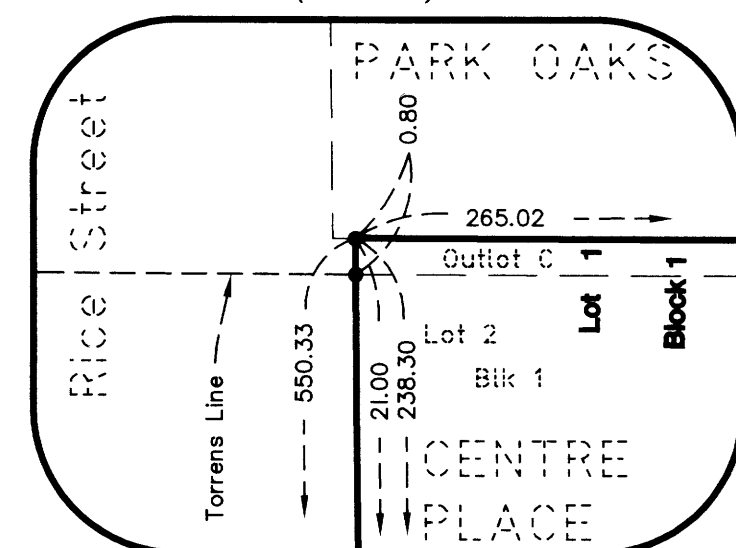
Document No. 2059298

Deputy Registrar of Titles

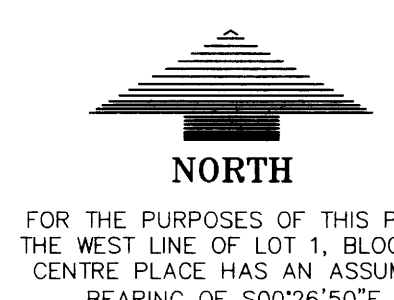
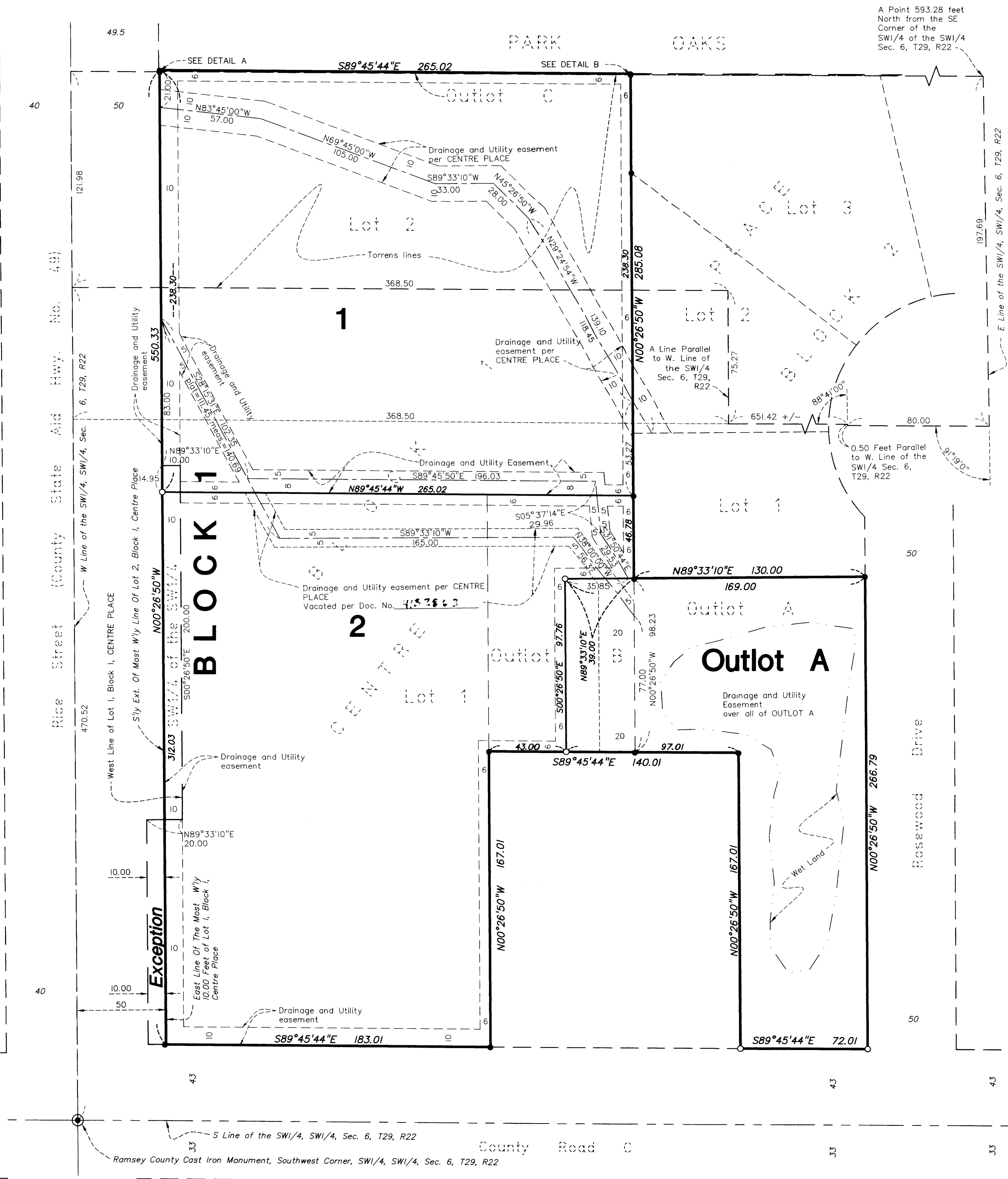
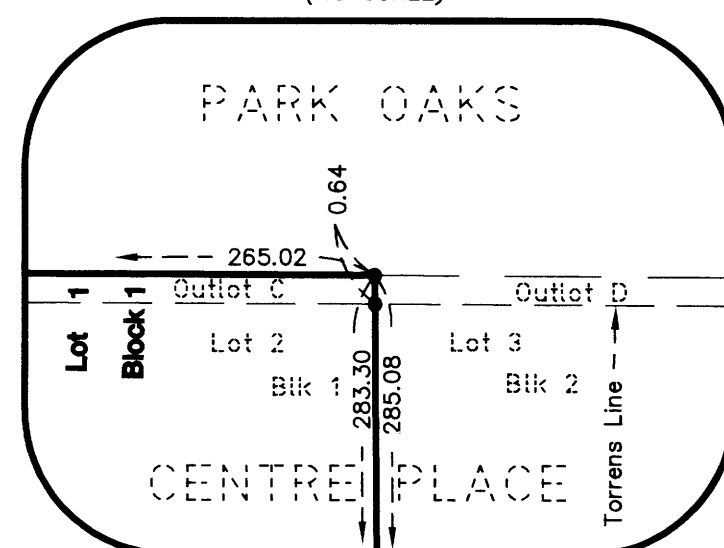
VICINITY MAP (NO SCALE) (SEC. 6, T29, R22)



DETAIL A (NO SCALE)

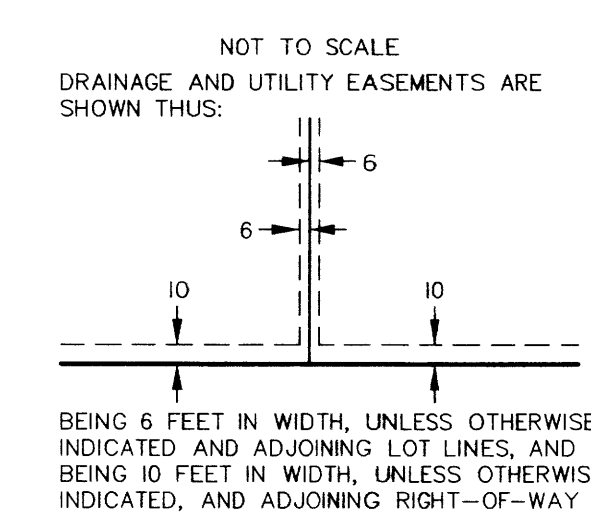


DETAIL B (NO SCALE)



FOR THE PURPOSES OF THIS PLAT THE WEST LINE OF LOT 1, BLOCK 1, CENTRE PLACE HAS AN ASSUMED BEARING OF S00°26'50"E

Plat Denotes plot of CENTRE PLACE distance
Meas. Denotes measured distance
○ DENOTES 1/2 INCH X 14 INCH IRON PIPE SET, MARKED 26724
● DENOTES 1/2 INCH IRON PIPE FOUND



BEING 6 FEET IN WIDTH, UNLESS OTHERWISE INDICATED AND ADJOINING LOT LINES, AND BEING 10 FEET IN WIDTH, UNLESS OTHERWISE INDICATED, AND ADJOINING RIGHT-OF-WAY LINES, AS SHOWN ON THE PLAT.

LOUCKS ASSOCIATES