

REGISTERED LAND SURVEY NO. 597

RAMSEY COUNTY, MINNESOTA

I, Dale Boklep, Land Surveyor, do hereby certify that, in accordance with the provisions of Minnesota Statutes, Section 508.47, I have surveyed the following described property situated in the County of Ramsey, State of Minnesota:

Lot 12 and Lot 20, Block 2, Park View Terrace, Ramsey County, Minnesota.

I hereby certify that this Registered Land Survey is a correct delineation of Certificate of Title No. 540247 and 503432. Dated this 23 day of AUGUST, 2006.

Dale Boklep
Dale Boklep, Licensed Land Surveyor
Minnesota License No. 12002

City of Mounds View

We do hereby certify that on the 31 day of August, 2006, the City Council of the City of Mounds View, Minnesota, approved this Registered Land Survey. All monuments will be set as specified by the City Council and as stated on this Registered Land Survey, according to Minnesota Statutes, Section 508.47, Subd. 4.

Mayor

City Administrator

Taxes payable in the year 2006 on the land herein described have been paid, also there are no delinquent taxes and transfer entered this 5th day of September, 2006.

Dorothy McClung, Director
Property Records and Revenue

By Katie Klong, Deputy

Pursuant to Minnesota Statutes, Section 383A.42, this Registered Land Survey has been examined and is approved this 5th day of September, 2006.

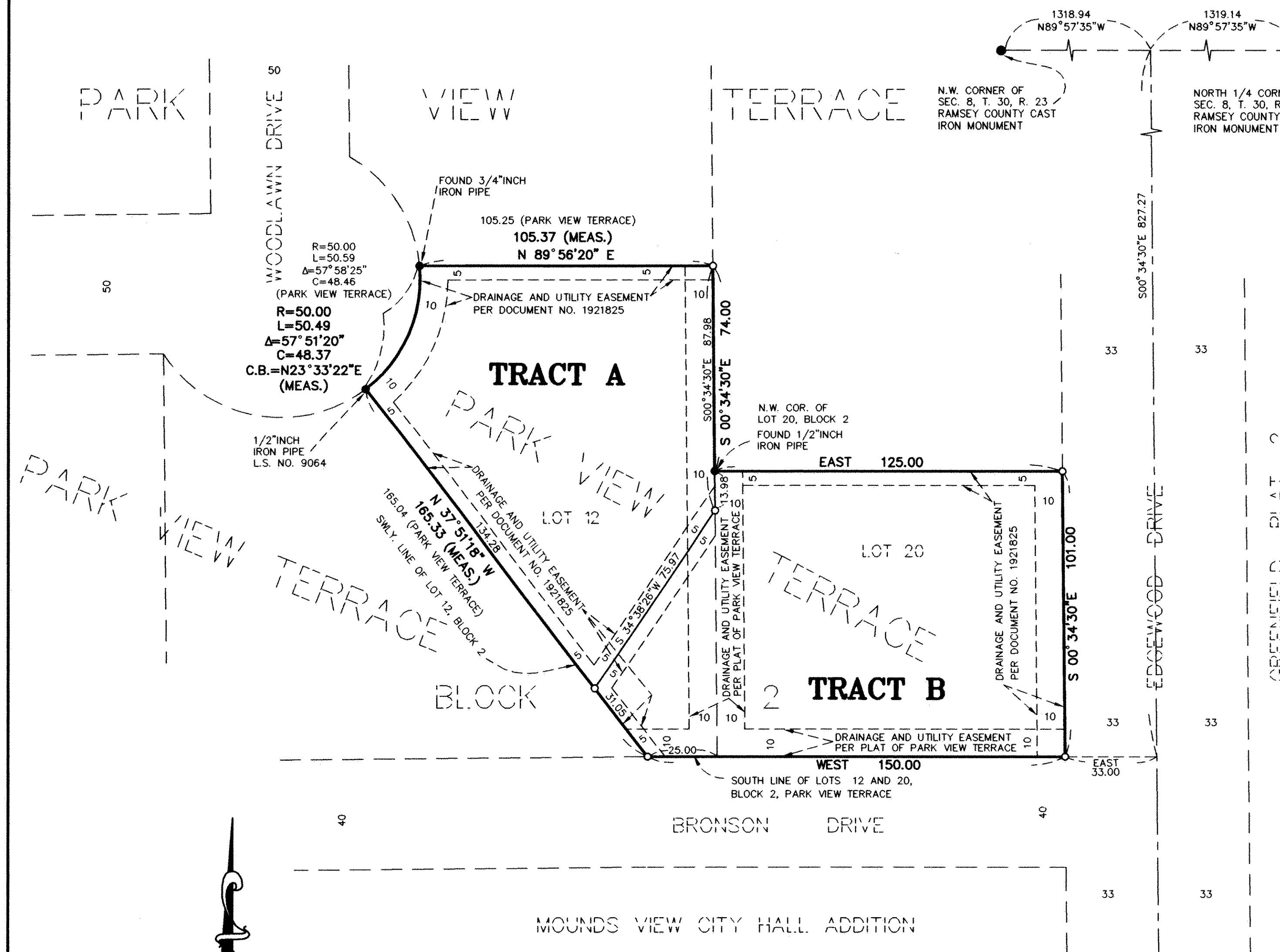
David D. Claypool
David D. Claypool, P.L.S.
Ramsey County Surveyor

Registrar of Titles, County of Ramsey, State of Minnesota.
I hereby certify that this Registered Land Survey No. 597 was filed in this office this 5th day of September, 2006, at 4:00 o'clock P.M., as Document No. 1982084.

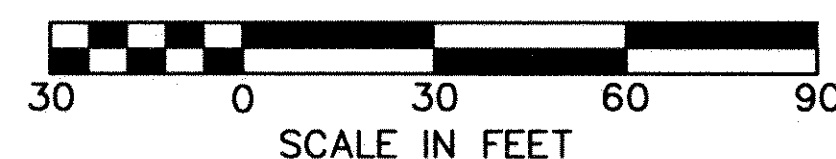
Deputy Registrar of Titles

**COMSTOCK
& AVIS, INC.**

CONSULTING ENGINEERS & LAND SURVEYORS



SCALE: 1 INCH = 30 FEET



○ DENOTES 1/2 INCH DIAMETER BY 18 INCH LONG IRON PIPE MONUMENT SET AND MARKED BY LICENSE NUMBER 12002 (DALE BOKLEP).

● DENOTES IRON PIPE MONUMENT FOUND, AS SHOWN.

FOR PURPOSES OF THIS REGISTERED LAND SURVEY THE SOUTH LINE OF LOTS 12 AND 20, BLOCK 2, PARK VIEW TERRACE IS ASSUMED TO HAVE A BEARING OF WEST.