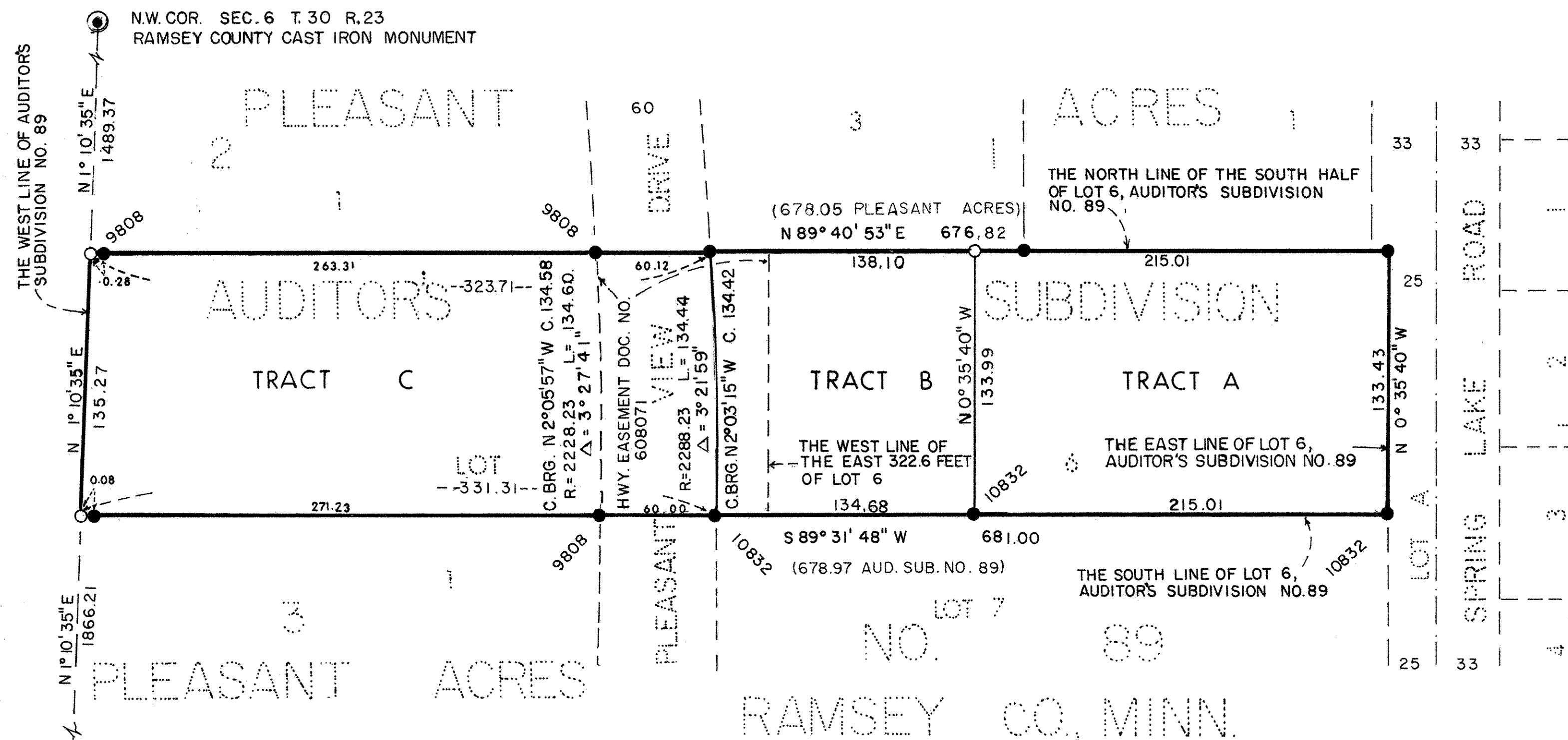
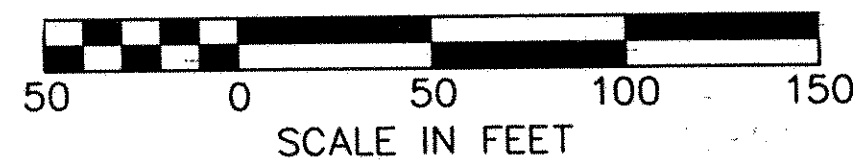


COPY

# REGISTERED LAND SURVEY NO. 567



SCALE: 1 INCH = 50 FEET



- W 1/4 COR. SEC. 6 T.30 R.23  
RAMSEY COUNTY CAST IRON MONUMENT
- DENOTES 1/2 INCH DIAMETER BY 18 INCH  
LONG IRON PIPE MONUMENT SET AND MARKED  
BY LICENSE NUMBER 12002 (DALE BOKLEP).
- DENOTES IRON PIPE MONUMENT - FOUND WITH  
NO CAP. - ALL 1/2 INCH DIAMETER MONUMENTS.
- DENOTES 1/2 INCH DIAMETER IRON PIPE MONUMENT  
FOUND AND SET BY THE LAND SURVEYOR WHOSE  
LICENSE NUMBER IS SHOWN BY THE MONUMENT.
- FOR PURPOSES OF THIS REGISTERED LAND SURVEY  
THE BASIS OF BEARINGS IS THE SOUTH LINE OF  
LOT 6, AUDITOR'S SUBDIVISION NO. 89, RAMSEY CO.,  
MINN., WHICH BEARS S89°31'48\"W.
- AUD. SUB. NO. 89 DENOTES AUDITORS SUBDIVISION NUMBER 89,  
RAMSEY COUNTY, MINN.

I, Ron Murphy, Land Surveyor, do hereby certify that, in accordance with the provisions of Minnesota Statutes, Section 508.47, I have surveyed the following described property situated in the County of Ramsey, State of Minnesota:

The South half of Lot 6 except the East 322.6 feet thereof, Auditor's Subdivision No. 89, Ramsey Co., Minn.;  
And  
The East 322.6 feet of the South Half of Lot 6, Auditor's Subdivision No. 89, Ramsey Co., Minn.

I hereby certify that this Registered Land Survey is a correct delineation of Certificate of Title Nos. 340194 and 366393.

Dated this 26<sup>TH</sup> day of JUNE, 2001.

Ron Murphy  
Ron Murphy, Land Surveyor  
Minnesota License No. 10832

City of Mounds View  
We do hereby certify that on the 14<sup>TH</sup> day of MAY, 2001, the City Council of the City of Mounds View, Minnesota, approved this Registered Land Survey. All monuments will be set as specified by the City Council and as stated on this Registered Land Survey, according to Minnesota Statutes, Section 508.47.

[Signature]  
Mayor  
Kathleen Miller  
City Administrator

Taxes payable in the year 2001 on the land herein described have been paid, also there are no delinquent taxes and transfer entered this 11<sup>TH</sup> day of JULY, 2001.

Dorothy McClung  
Department of Property Taxation, Director

By Deborah K. McShane, Deputy

Pursuant to Minnesota Statutes, Section 383A.42, this Registered Land Survey has been examined and is approved this 11<sup>TH</sup> day of JULY, 2001 and the conditions of Minnesota Statutes, Section 505.03, Subdivision 2, have been fulfilled.

David D. Claypool  
David D. Claypool, L.S.  
Ramsey County Surveyor

Registrar of Titles, County of Ramsey, State of Minnesota  
I hereby certify that this Registered Land Survey No. 567 was filed in this office this 11<sup>TH</sup> day of JULY, 2001, at 8:00 o'clock A. M., as Document No. 1642891.

Deputy Registrar of Titles

**COMSTOCK & DAVIS, INC.**  
1446 COUNTY ROAD J  
MINNEAPOLIS, MN 55432  
PHONE: 763-784-9346  
FAX: 763-784-9395  
CONSULTING ENGINEERS & LAND SURVEYORS