

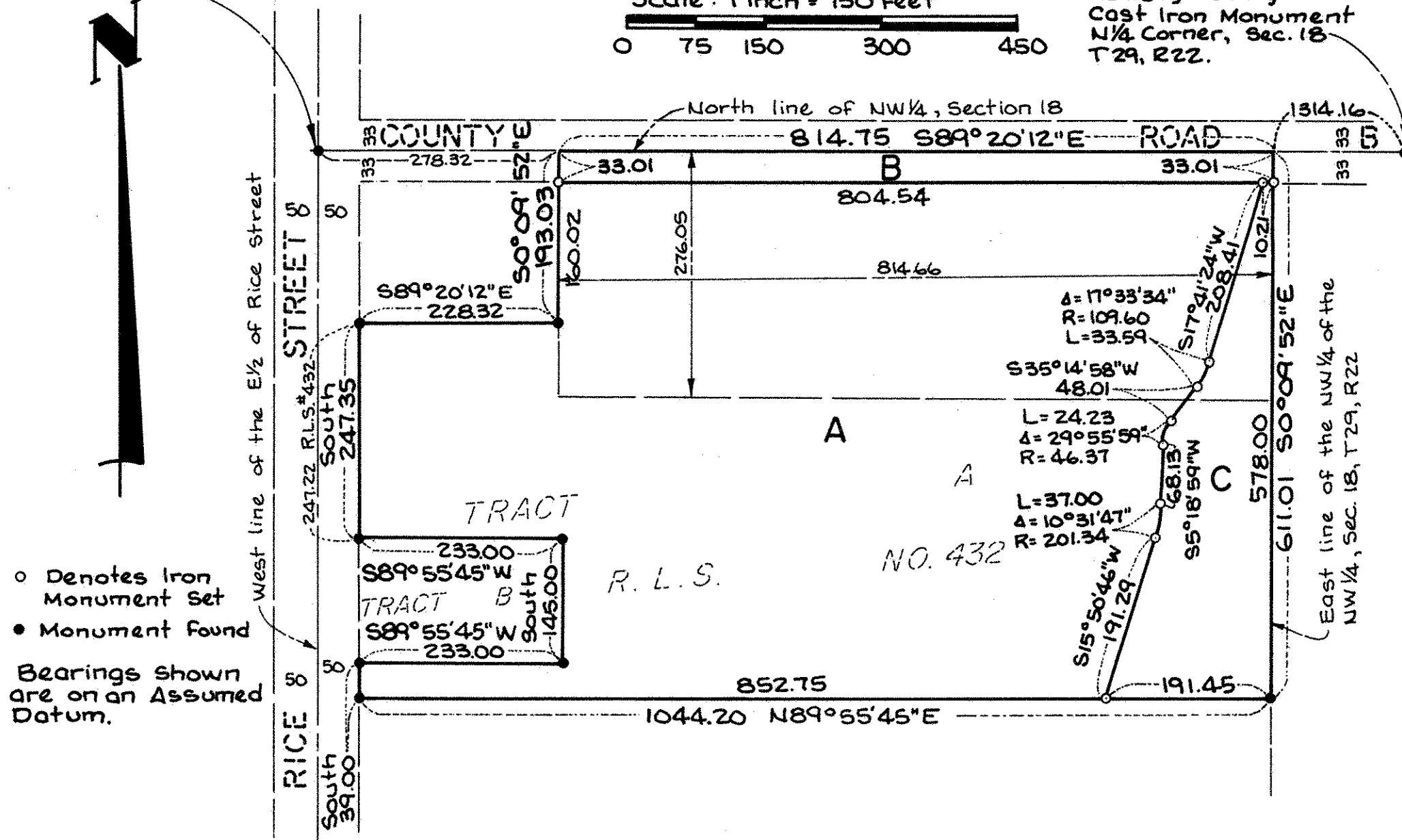
Copy

# REGISTERED LAND SURVEY NO. 447

Ramsey County  
Cast Iron Monument  
NW Corner, Sec. 18,  
T29, R22.

Scale in feet  
Scale: 1 inch = 150 feet  
0 75 150 300 450

Ramsey County  
Cast Iron Monument  
N1/4 Corner, Sec. 18,  
T29, R22.



I, Raymond A. Prasch, hereby certify that in accordance with the provisions of Chapter 508, Minnesota Statutes of 1949, as amended, I have surveyed the following described tract of land in the County of Ramsey, State of Minnesota, to-wit:

Tract A, Registered Land Survey No. 432, Files of the Registrar of Titles, County of Ramsey

also

The north 276.05 feet of the east 814.66 feet of the Northwest Quarter of the Northwest Quarter of Section 18, Township 29, Range 22.

That the survey shown hereon is a correct delineation of said survey. Dated this 28<sup>TH</sup> day of DECEMBER, 1987.

*Raymond A. Prasch*

Raymond A. Prasch, Registered Land Surveyor  
Minnesota Registration No. 6743

Approved and accepted by the City Council of the City of Maplewood, Minnesota, this

28<sup>th</sup> day of December, 1987.

*John G. ...*

Mayor

*Louise E. ...*

Clerk

Taxes for the year 1987 on land described herein paid, no delinquent taxes and transfer entered, this 31 day of December, 1987.

*Lou McHenna*

Director

By *H. Bymark*

Deputy

Department of Property Taxation

Pursuant to Chapter 7, Minnesota Laws of 1976, this Registered Land Survey has been reviewed and approved, this 31<sup>st</sup> day of December, 1987 and the conditions of Minnesota Statutes, Section 505.03, Subdivision 2, have been fulfilled.

*David D. Claypool*

David D. Claypool  
Acting Ramsey County Surveyor

Registrar of Titles, County of Ramsey, State of Minnesota

I hereby certify that this Registered Land Survey No. 447 was filed in this office this 31<sup>st</sup> day of December, 1987, at 4:00 o'clock P.M., as Document No. 858423.

By

John C. McLaughlin, Registrar of Titles

Deputy

LOT SURVEYS COMPANY, INC.  
LAND SURVEYORS