

COPY

REGISTERED LAND SURVEY NO. 436

I, Raymond A. Prasch, hereby certify that in accordance with the provisions of chapter 508, Minnesota Statutes of 1949, as amended, I have surveyed the following described tract of land in the County of Ramsey, State of Minnesota, to-wit:

Lots 1 to 4, inclusive, and Lots 15 to 23, inclusive, Block 8;
Those parts of Lots 5 to 9, inclusive, Block 8, lying North of the South 55 feet thereof;
That part of the vacated alley in Block 8, lying West of a line extending from the Northeast corner of Lot 15, Block 8, to the Southeast corner of Lot 4, Block 8;
Lots 1 to 7, inclusive, Block 9;
That part of vacated Fourteenth Avenue, which adjoins Blocks 8 and 9, lying West of a line extending from the Northeast corner of Lot 9, Block 8, to the Southeast corner of Lot 2, Block 9, and East of a line extending from the Northwest corner of Lot 1, Block 8, to the Southwest corner of Lot 7, Block 9;
all in "Third Addition to North St. Paul, Ramsey County, Minn."

That the survey shown hereon is a correct delineation of said survey.
Dated this 8TH day of MAY, 1987.

Raymond A. Prasch
Raymond A. Prasch, Registered Land Surveyor
Minnesota Registration No. 6743

Approved and accepted by the City Council of the City of North St. Paul, Minnesota,
this 6TH day of APRIL, 1987.

William E. Jantzen Mayor

Robert L. Gatter Clerk

Taxes for the year 1987 on land described herein paid, no delinquent taxes and transfer entered, this 12 day of June, 19887.

Lou McKenna Director
Department of Property Taxation

By D. McDonough Deputy

Pursuant to Chapter 7, Minnesota Laws of 1976, this Registered Land Survey has been reviewed and approved, this 12TH day of June, 1987 and the conditions of Minnesota Statutes, Section 505.03, Subdivision 2, have been fulfilled.

David D. Claypool
David D. Claypool
Acting Ramsey County Surveyor

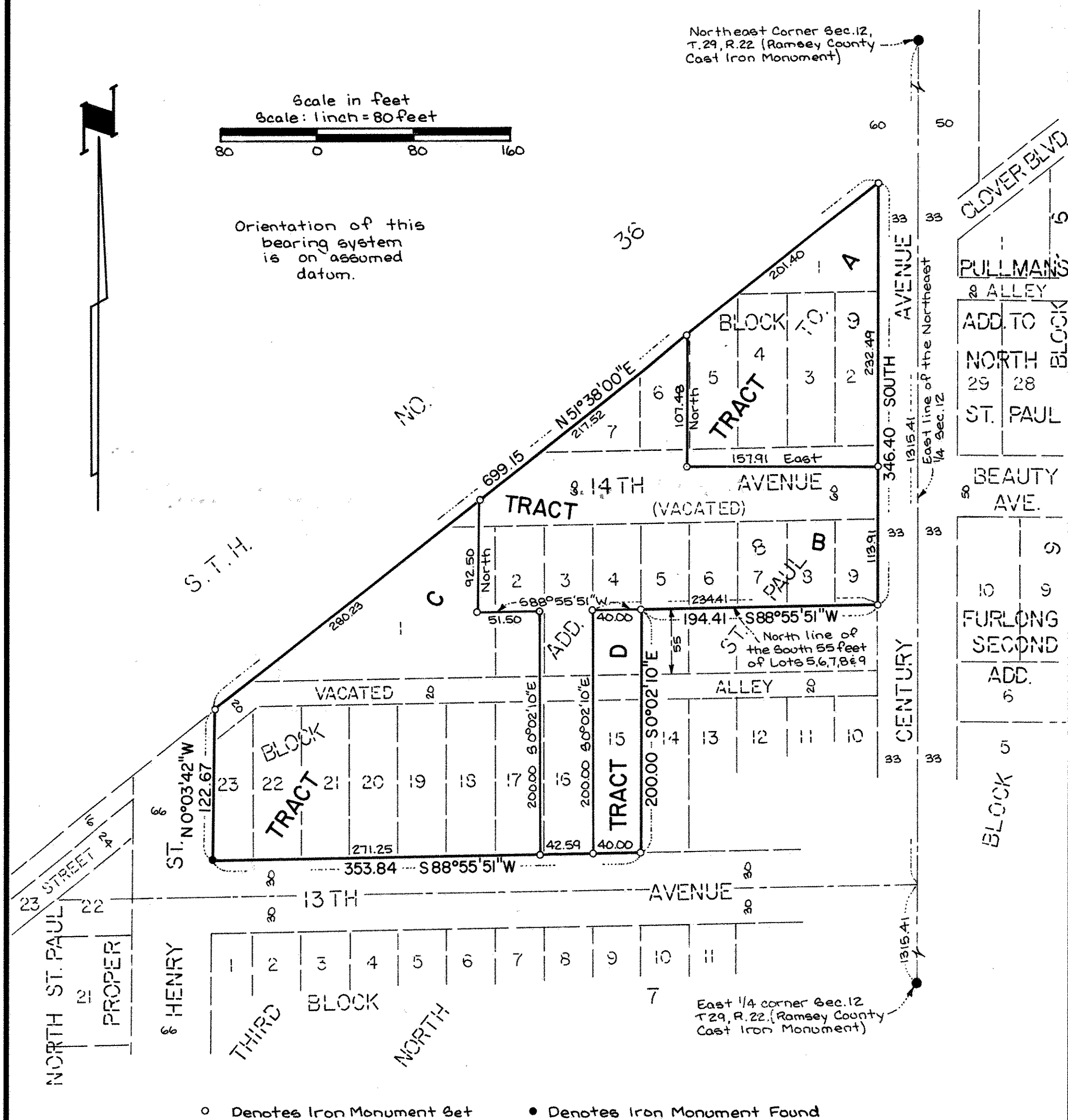
Registrar of Titles, County of Ramsey, State of Minnesota

I hereby certify that this Registered Land Survey No. 436 was filed in this office this 6TH day of JULY, 1987, at 2:10 o'clock P.M., as Document No. 842301.

By _____ Deputy
John C. McLaughlin, Registrar of Titles

LOT SURVEYS COMPANY, INC.
LAND SURVEYORS

REGISTERED LAND SURVEY NO. 436



LOT SURVEYS COMPANY, INC.
LAND SURVEYORS