

Copy

**REGISTERED LAND SURVEY NO. 389**

I, Howard W. Rogers, hereby certify that in accordance with the provisions of Chapter 508, Minnesota Statutes of 1949, as amended, I have surveyed the following described tract of land in the County of Ramsey, State of Minnesota, to wit:

Lot 11, except the South 12 feet thereof, and all of Lots 12, 13, 14 and 15, Block 2, Spring Lake Park Highlands, according to the plat thereof filed of record in the office of the Registrar of Titles within and for said County.

That the survey shown hereon is a correct delineation of said survey, this 22<sup>nd</sup> day of Nov., 1983.

Howard W. Rogers  
Howard W. Rogers, Land Surveyor  
Minnesota Registration No. 10945

Approved and accepted by the City Council of The City of Mounds View, Minnesota, this 22ND day of AUGUST, 1983.

Quane W. McCarty Mayor  
Donald F. Cady Clerk

Pursuant to Chapter 7, Minnesota Laws of 1976, this Registered Land Survey has been reviewed and approved, this 16<sup>TH</sup> day of December, 19 83 and the conditions of Minnesota Statutes, Section 505.03, Subdivision 2, have been fulfilled.

F. R. Kvidera  
F.R. Kvidera  
Acting Ramsey County Surveyor

Taxes for the year 1983 on land described herein paid, no delinquent taxes and transfer entered, this 12<sup>th</sup> day of December, 19 83.

Lou McKenna Director By M. J. Dunsen Deputy  
Department of Property Taxation  
Registrar of Titles, County of Ramsey, State of Minnesota

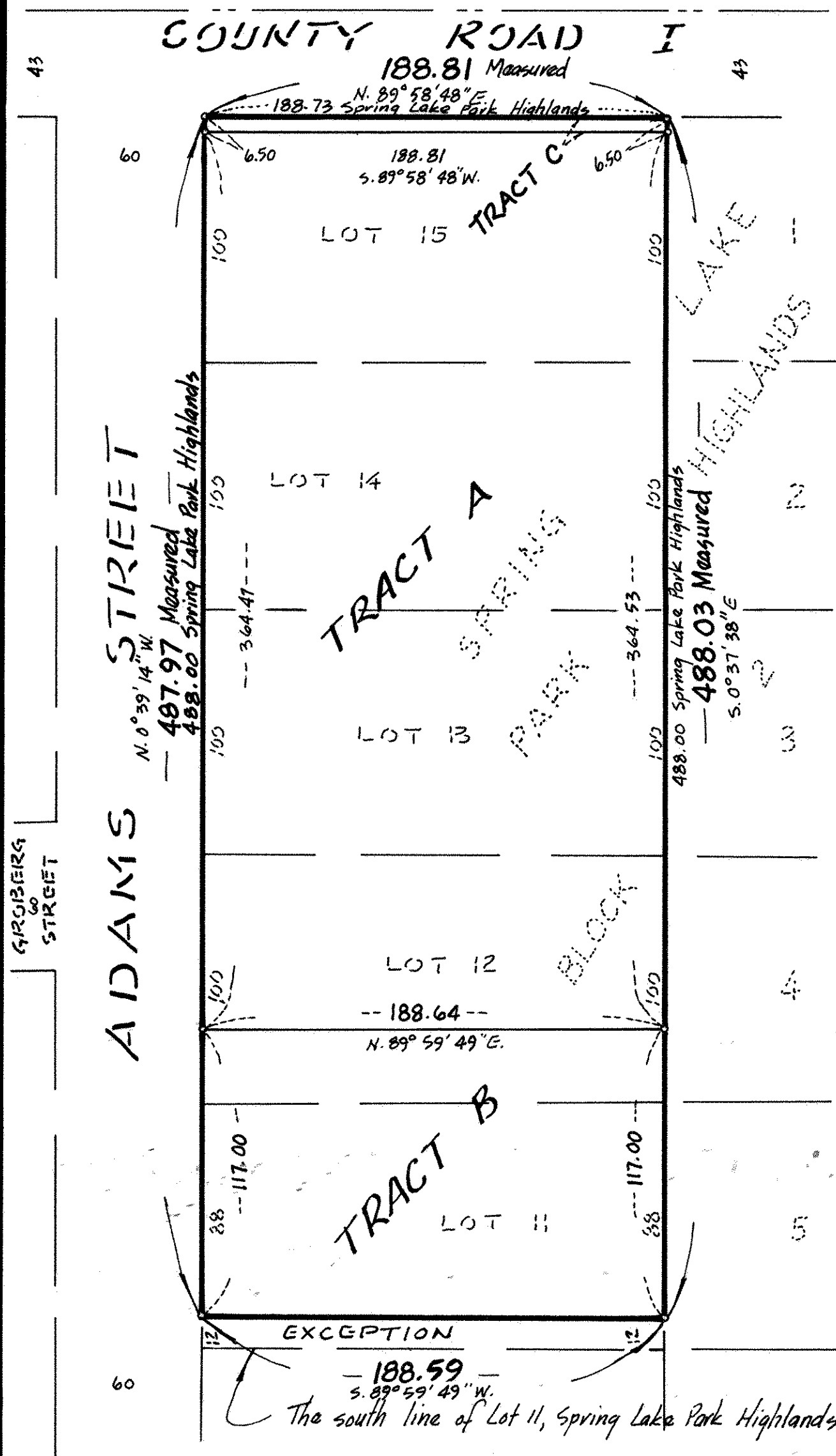
I hereby certify that this Registered Land Survey No. 389 was filed in this office this 19<sup>th</sup> day of DECEMBER, 19 83 at 9:10 o'clock A.M., as Document Number 749225.

By \_\_\_\_\_ Deputy

Eugene H. Gibbons  
Registrar of Titles

Copy

REGISTERED LAND SURVEY NO. 389  
RAMSEY COUNTY, MINNESOTA



Scale: 1 inch = 50 feet



GRAPHIC SCALE IN FEET

Bearings shown are on an assumed datum

- o Denotes iron monument marked by Minnesota Registration No. 10945

NOVEMBER, 1983

Located in:  
NW 1/4 of NE 1/4 of Section 8,  
Township 30, Range 23.

**UBURBAN ENGINEERING**  
INC.

North Office - 571-6066  
6875 Highway No. 65 N.E.  
Minneapolis, Minnesota 55432

South Office - 890-6510  
12350 River Ridge Blvd.  
Burnsville, Minnesota 55337