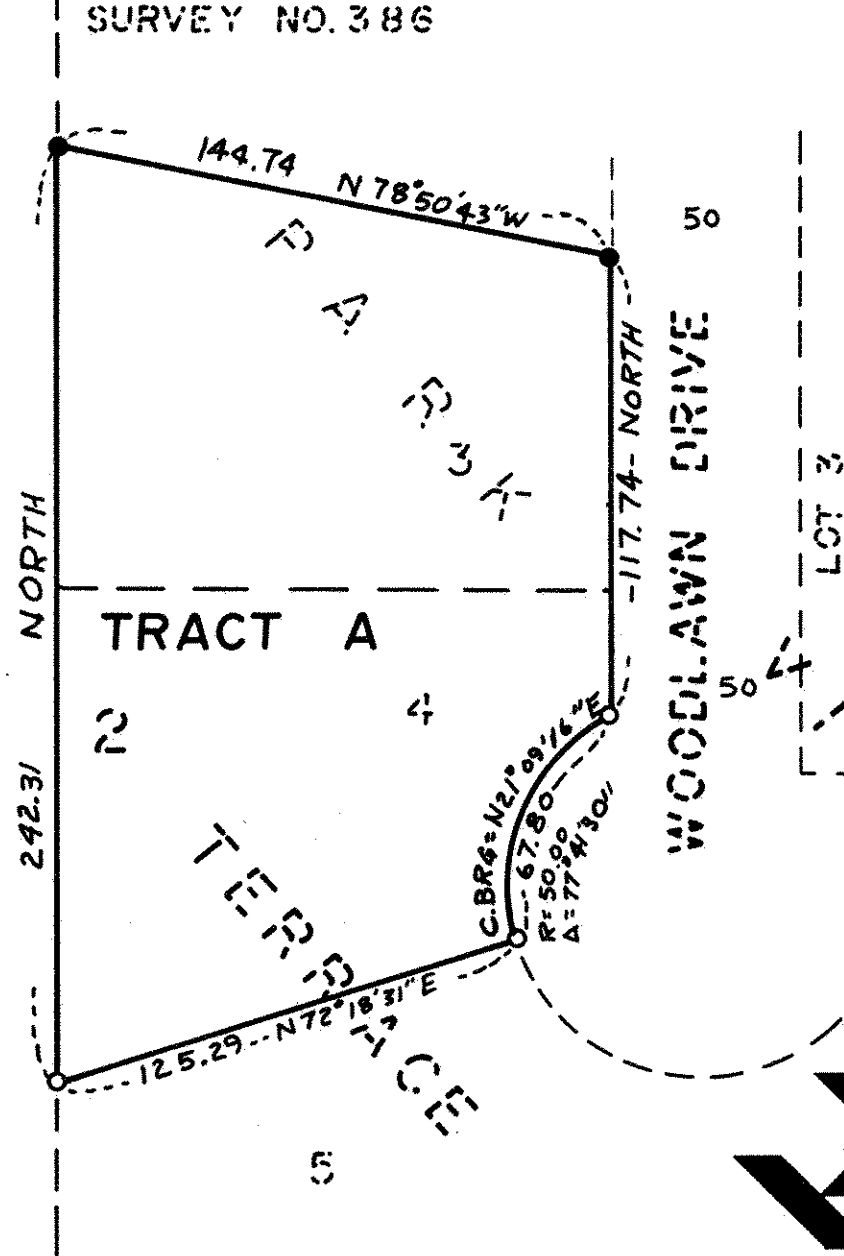


Copy

REGISTERED LAND SURVEY NO. 388

REGISTERED LAND
SURVEY NO. 386



○ DENOTES IRON MONUMENT SET
● DENOTES IRON MONUMENT FOUND
THE WEST LINE OF TRACT "A"
IS ASSUMED TO HAVE A BEARING
OF NORTH.

SCALE: 1 inch = 50 feet



Located in the N.W. 1/4 of
the N.W. 1/4, SECTION 8, T30, R23

HEDLUND ENGINEERING

I Calvin H. Hedlund, land surveyor, hereby certify that in accordance with the provisions of Chapter 508, Minnesota Statutes of 1949 as amended, I have surveyed the following described tract of land in the County of Ramsey and State of Minnesota, to wit:

Lots 3 and 4, Block 2, PARK VIEW TERRACE.

That the survey shown hereon is a correct delineation of said survey, this 2ND day of NOVEMBER, 1983.

Calvin H. Hedlund
Calvin H. Hedlund, Land Surveyor
Minnesota Registration No. 5942

Approved and accepted by the City Council of the City of Mounds View, Minnesota, this 12TH day of September, 1983.

Phyllis L. Blanchard
ACTING Mayor

Donald L. Ogley
Clerk

Taxes for the year 1983 on the land described herein paid, no delinquent taxes and transfer entered this 13TH day of December, 1983.

Low McKenna Director By R. J. Segl Deputy
Department of Property Taxation

Pursuant to Chapter 7, Minnesota Laws of 1976 this Registered Land Survey has been reviewed and approved this 15TH day of December, 1983 and the conditions of Minnesota Statutes, Section 505.03, Subdivision 2, have been fulfilled.

F. R. Kvidera
F.R. Kvidera, Acting Ramsey County Surveyor

Registrar of Titles, County of Ramsey, State of Minnesota 388
I hereby certify that this Registered Land Survey No. 388 was filed in this office this 15TH day of DECEMBER, 1983, at 10:50 o'clock A.M., as Document No. 749082.

Eugene H. Gibbons, Registrar of Titles

By _____, Deputy