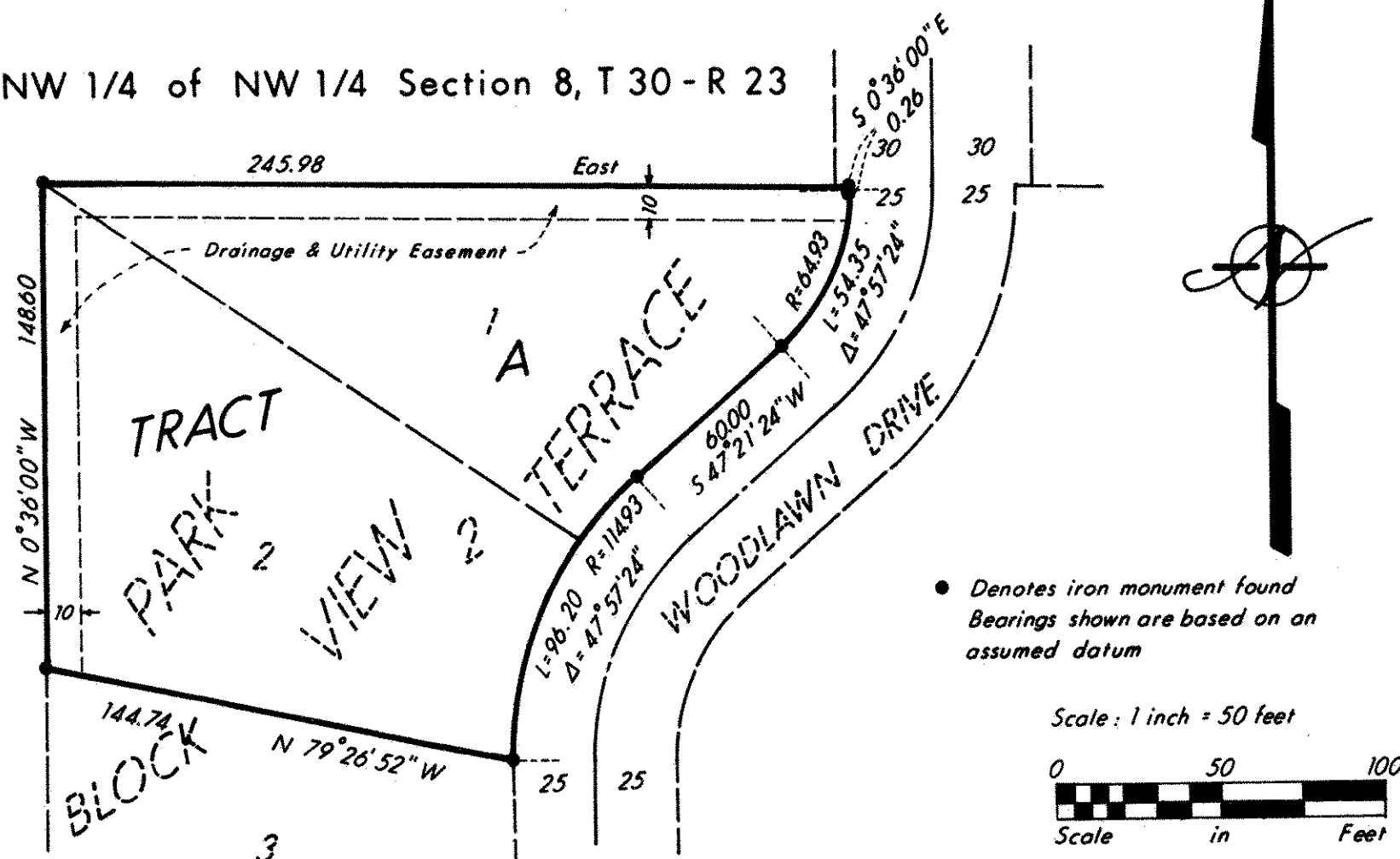


COPY

REGISTERED LAND SURVEY NO. 386

Located in NW 1/4 of NW 1/4 Section 8, T30-R23



I, Ron Murphy, Surveyor, hereby certify that in accordance with the provisions of Chapter 508, Minnesota Statutes of 1949, as amended, I have surveyed the following described tract of land in the County of Ramsey, State of Minnesota, to wit:

Lots 1 and 2, Block 2, Park View Terrace.

That the survey shown hereon is a correct delineation of said survey, this 23rd day of AUGUST, 19 83.

Ron Murphy
 Ron Murphy, Land Surveyor
 Minnesota Registration No. 10832

Approved and accepted by the City Council of the City of Mounds View, Minnesota, this 23rd day of MAY, 19 83.

Duane W. McCarty
 Mayor

[Signature]
 Clerk

Pursuant to Chapter 7, Minnesota Laws of 1976, this Registered Land Survey has been reviewed and approved, this 19th day of September, 19 83, and the conditions of Minnesota Statutes, Section 505.03, Subdivision 2, have been fulfilled.

F. R. Kvidera
 F. R. Kvidera,
 Acting Ramsey County Surveyor

Taxes for the year 1983 on land described herein paid, no delinquent taxes and transfer entered, this 16th day of September, 19 83.

Sam De Zanna Director By V. Zanna Deputy
 Department of Property Taxation

Registrar of Titles, County of Ramsey, State of Minnesota

I hereby certify that this Registered Land Survey No. 386 was filed in this office this 26th day of SEPTEMBER, 19 83, at 2:30 o'clock P.M., as Document No. 244747.

Eugene H. Gibbons, Registrar of Titles By _____ Deputy