

## REGISTERED LAND SURVEY NO. 296

I hereby certify that in accordance with the provisions of Chapter 508, Minnesota Statutes of 1949, as amended, I have surveyed the following described tract of land in the County of Ramsey and State of Minnesota to wit:

Tract A, Registered Land Survey No. 290, files of  
Registrar of Titles, County of Ramsey.

This is a correct delineation of the survey  
dated this 20<sup>th</sup> day of November,  
1974.

E. A. Rathbun  
E. A. Rathbun, Land Surveyor  
Minnesota Registration No. 3795

Accepted and approved this 6<sup>TH</sup> day of  
JANUARY, 1975.

Ronald F. Meyer

Wayne W. Ryan  
Plat Commission

Walter A. Shertley

Richard L. Wank  
City Engineer of St. Paul

This Registered Land Survey has been  
approved and accepted by the City  
Council of Arden Hills at a regular  
meeting thereof held this 25<sup>th</sup> day  
of November, 1974.

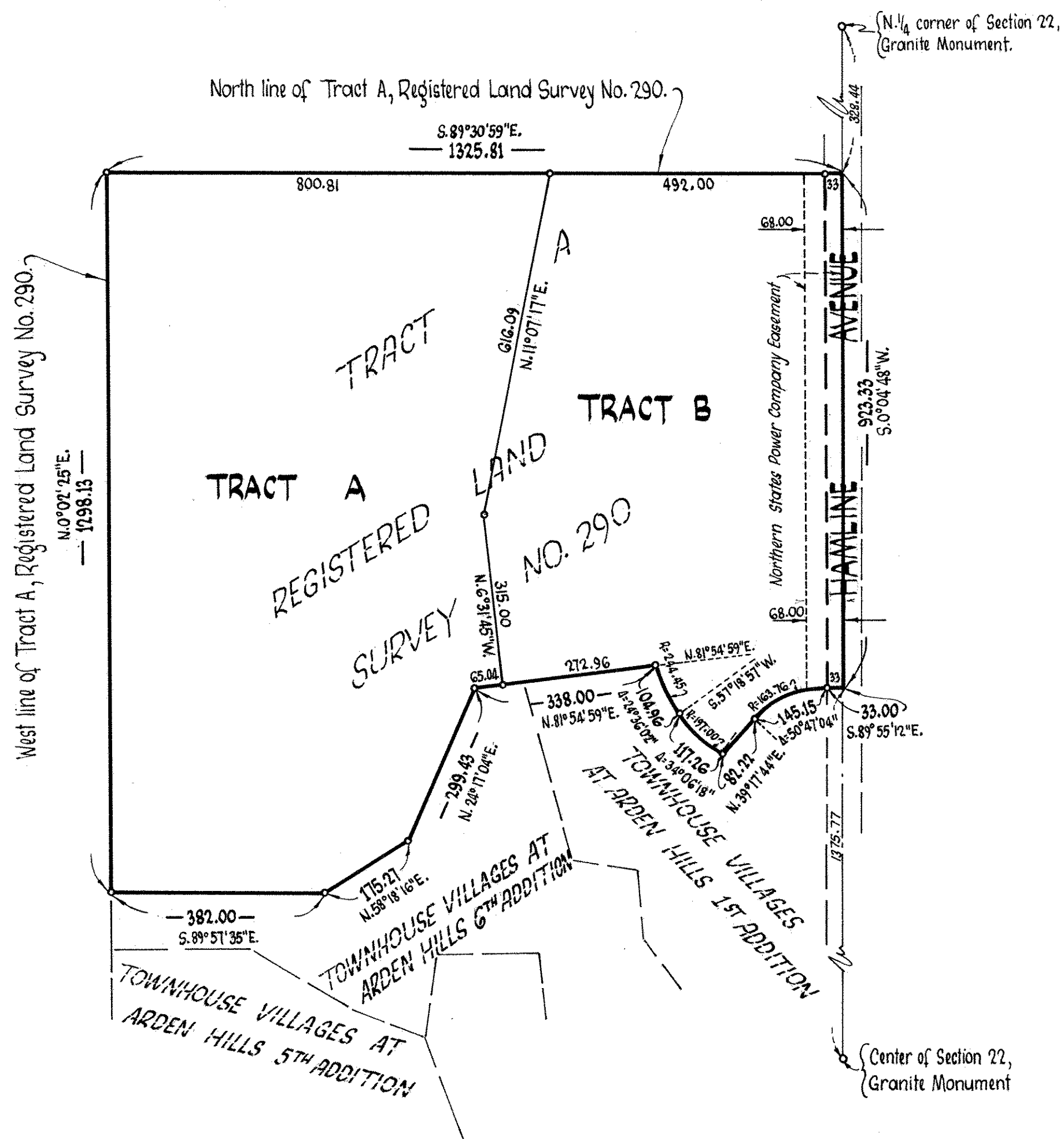
CITY COUNCIL OF ARDEN HILLS, MINNESOTA  
By James J. Duggan Mayor  
By Charlotte W. Drieh Clerk

No delinquent taxes and transfer entered this 17 day of December, 1974.

Loy McKenna Director  
Department of Property Taxation

By So. Hill Deputy


REGISTERED LAND SURVEY NO. 296



- Denotes iron monument marked by Minnesota Registration No.3795

Bearings shown are assumed

Scale: 1 inch = 200 feet

OCTOBER, 1974

**SUBURBAN**  
ENGINEERING, INC.  
—Engineers—

— Surveyors —