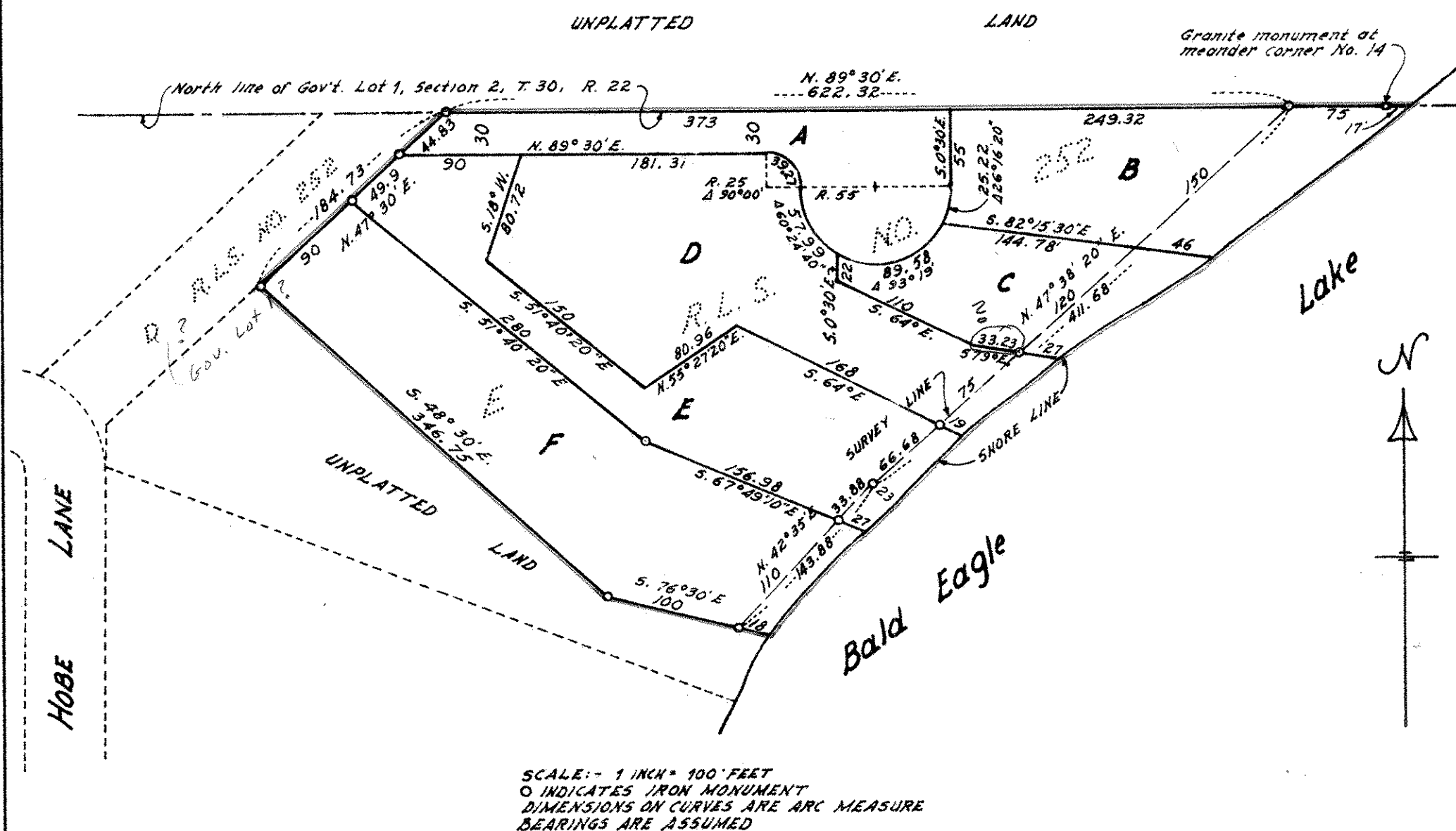


REGISTERED LAND SURVEY No. 272



I hereby certify that in accordance with the provisions of Chapter 508, Minnesota Statutes of 1949 as amended I have surveyed the following described tract of land in the County of Ramsey and State of Minnesota, to-wit: Tract E, Registered Land Survey No. 252, files of Registrar of Titles, Ramsey County, Minnesota. And that the drawing hereon is a correct representation of said survey.

November 7, A. D. 1972

John R. Turpin

John R. Turpin
Registered Land Surveyor
Minn. Certif. No. 6740

Approved by the Board of Supervisors of White Bear Township, Ramsey County, Minnesota on November 13, A. D. 1972

Maure Rofch

Clerk

Terrence M. Roney

Chairman

Accepted and approved this 30th day of January A. D. 1973.

Nathaniel A. Heithy

Frankie Miller

Robert W. Ryan

Frederick J. Schmale

Plat Commission

City Engineer of St. Paul

