

TENT. # 254

MV 29(13)

REGISTERED LAND SURVEY NO. 261

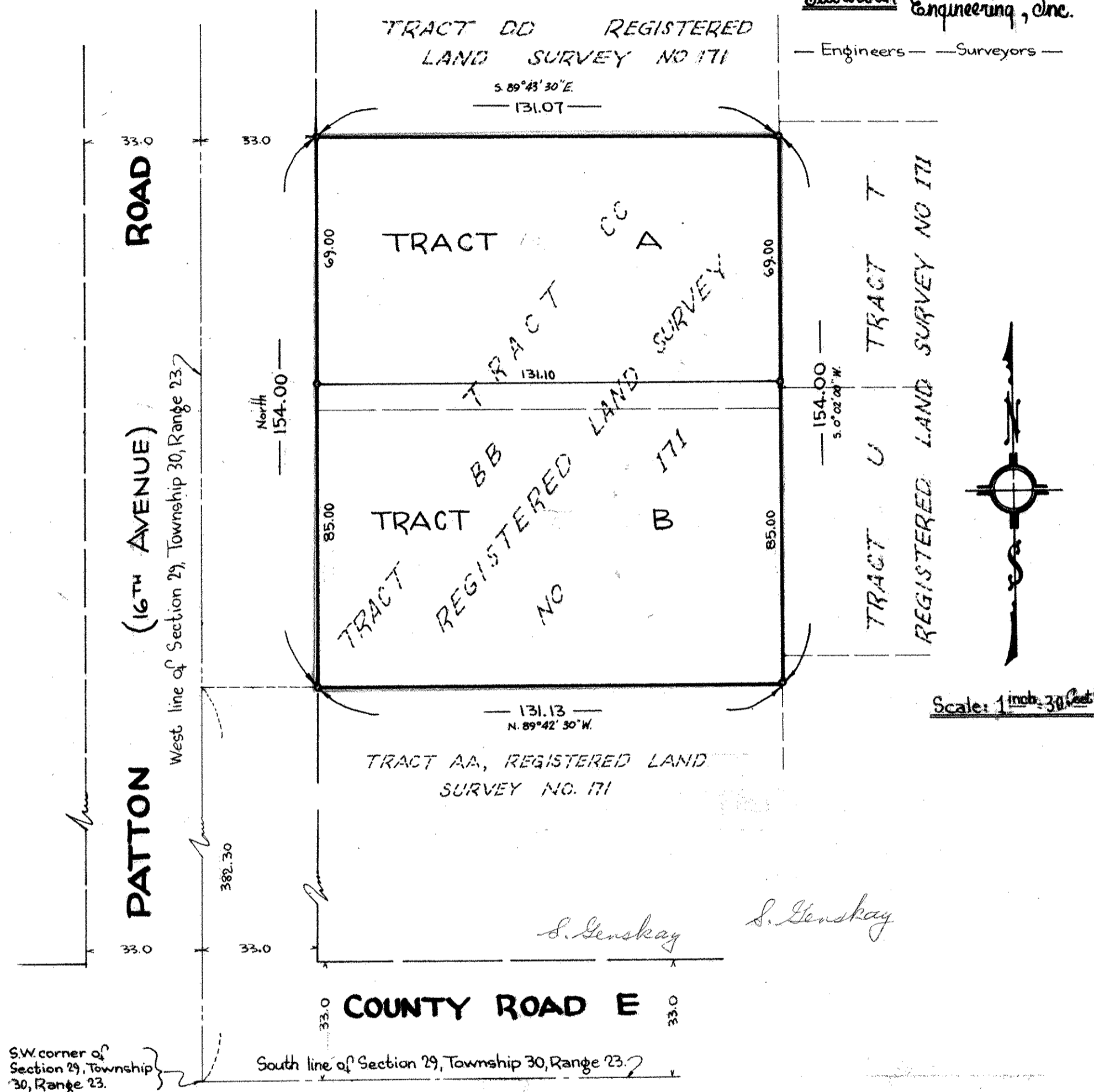
RAMSEY COUNTY, MINNESOTA

Bearings are assumed
 o Denotes iron monument

MAY, 1971

Suburban Engineering, Inc.

— Engineers — — Surveyors —



S.W. corner of
 Section 29, Township
 30, Range 23.

I hereby certify that in accordance with the provisions of Chapter 508, Minnesota Statutes of 1949, as amended, I have surveyed the following described tract of land in the County of Ramsey and State of Minnesota to wit: Tract BB and Tract CC, Registered Land Survey No. 171.

This is a correct delineation of the survey
 Dated this 17th day of June
 A.D. 1971.

E. A. Rathbun
 Surveyor - Minnesota Reg. #3795
 E. A. Rathbun

This Registered Land Survey has been approved and
 accepted by the Village Council of New Brighton at
 a regular meeting thereof held this 22 day of
 June A.D. 1971.

VILLAGE COUNCIL OF NEW BRIGHTON
 By Hayle C. Broman Mayor
 By Robert W. Schaefer Manager

Accepted and approved this 18th day of FEB.

A.D. 1972

Walter A. Hurley Plat Commission
Roger M. Conway Commissioner of Public Works

RECORDED FEB. 23, 1972