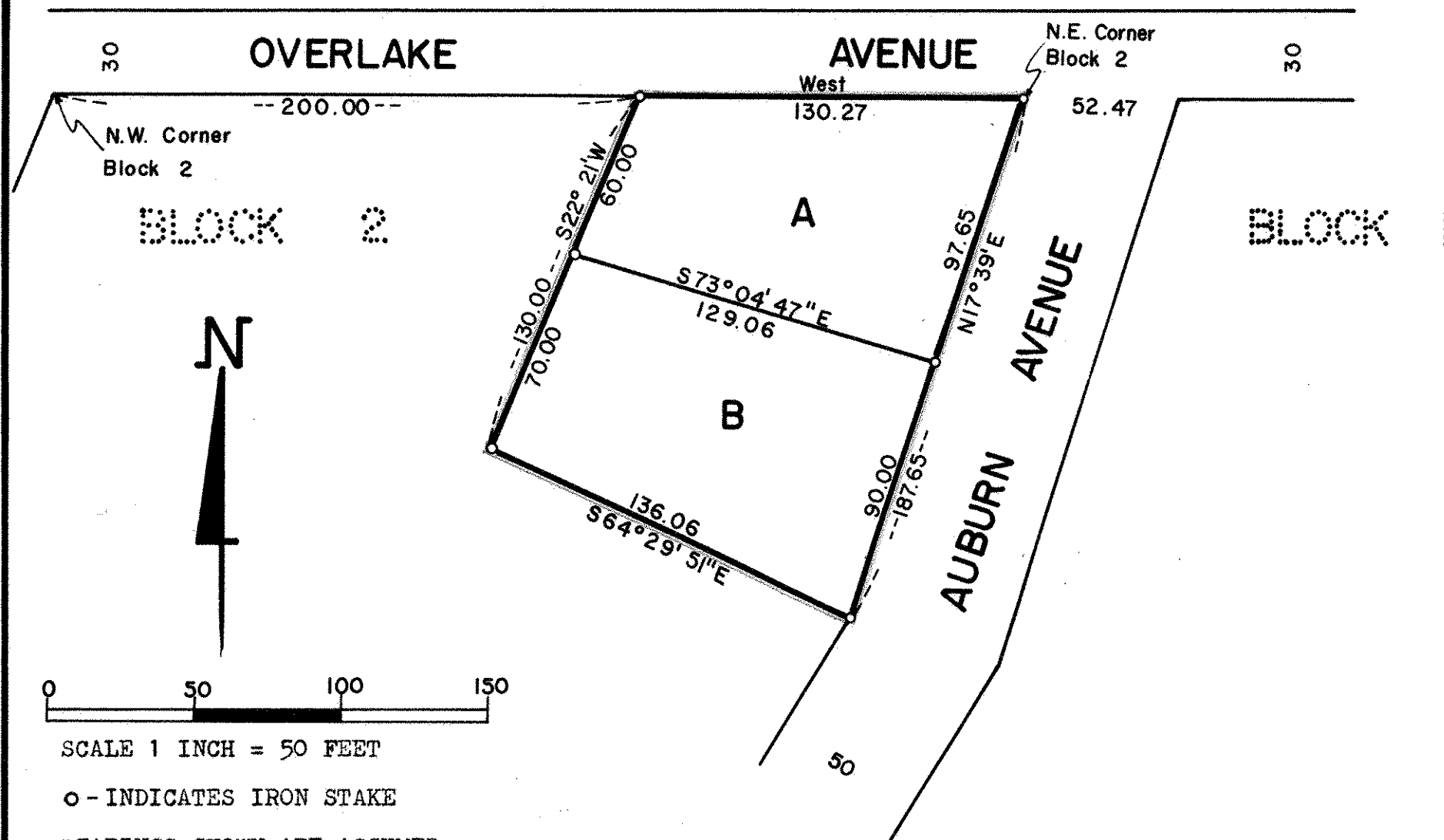


# REGISTERED LAND SURVEY NO. 259

RAMSEY COUNTY, MINNESOTA



I HEREBY CERTIFY THAT IN ACCORDANCE WITH THE PROVISIONS OF CHAPTER 508 MINNESOTA STATUTES OF 1949 AS AMENDED, I HAVE SURVEYED THE FOLLOWING DESCRIBED TRACT OF LAND IN THE TOWNSHIP OF WHITE BEAR, COUNTY OF RAMSEY AND STATE OF MINNESOTA TO WIT:

Beginning on the North line and 200 feet East of the Northwest corner of Block 2; thence Southerly 130 feet parallel with the West line of Block 2; thence Southeasterly to a point on the East line of and 187.65 feet Southerly from the Northeast corner of Block 2; thence Northerly to the Northeast corner of Block 2; thence West to point of beginning on North line of Block 2, Overlake Third Addition.

THAT THE SURVEY SHOWN HEREIN IS A CORRECT DELINEATION OF SAID SURVEY, AS SURVEYED BY ME.

DATE Jan. 5, 1972

Edgar L. Swenson  
Reg. Prof. Engineer and Land Surveyor Cert. No. 567

Accepted and approved by the Town Board of White Bear, Ramsey County, Minnesota.

This 6th day of January A D 1972.

Terrence M. Rooney  
Chairman of Town Board

Marie Rolph  
Township Clerk

Approved by Plat Commission this 10th day of January A D 1972.

Plat Commission

Walter A. Hertley  
Walter A. Hertley

Commissioner of Public Works

Joe. A. Osburn

NO DELINQUENT TAXES  
AND TRANSFER ENTERED  
JAN 7 - 1972  
LOU McKEEN, ASST. CLERK  
RAMSEY COUNTY, MINN.  
D. H. H. H.