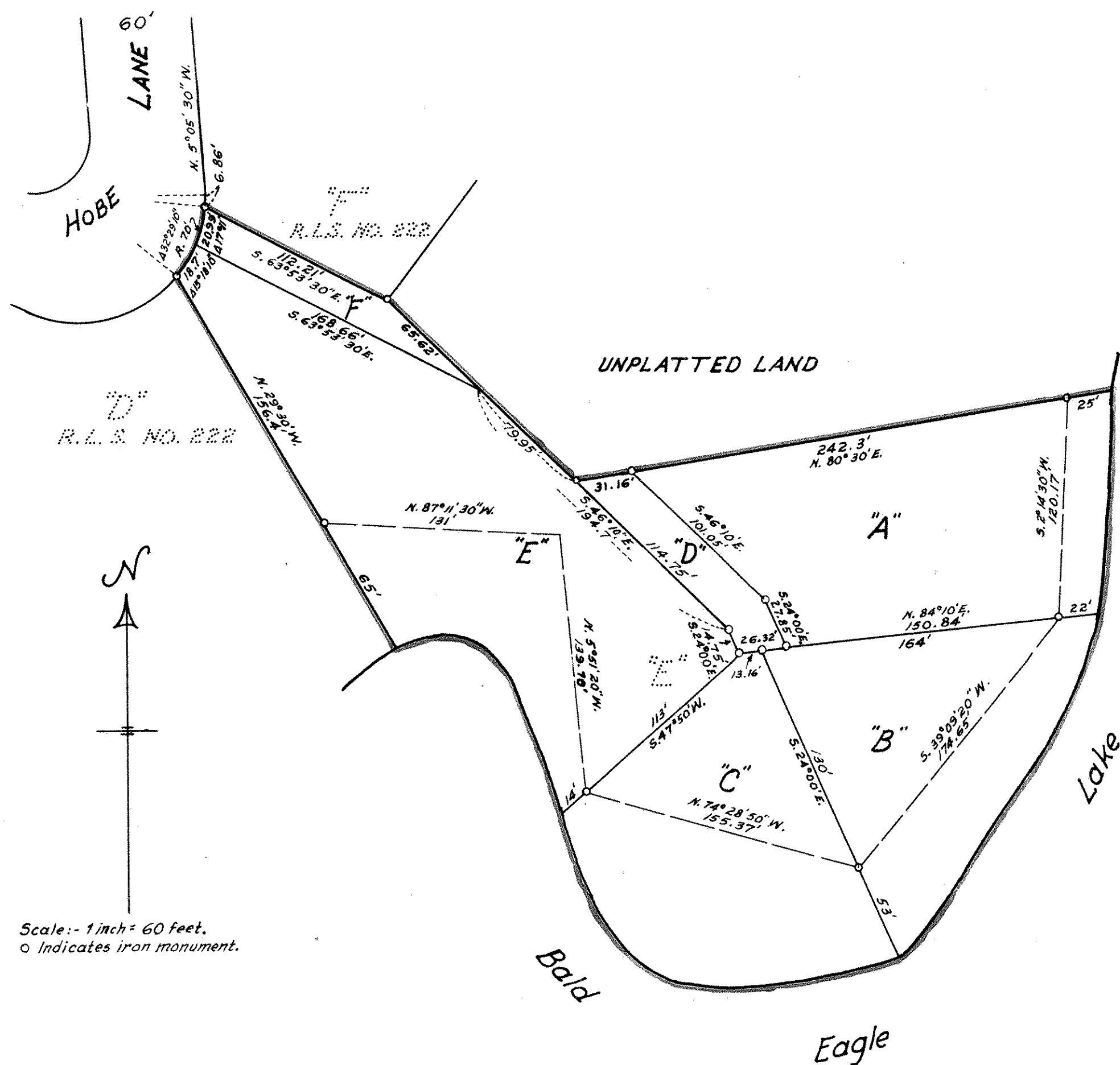


REGISTERED LAND SURVEY No. 240



I hereby certify that in accordance with the provisions of Chapter 508, Minnesota Statutes of 1949 as amended, I have surveyed the following described tract of land in the County of Ramsey and State of Minnesota, to-wit: Tract "D", Registered Land Survey No. 222, on file and of record in the office of the Registrar of Titles in and for Ramsey County, Minnesota. That the survey shown hereon is a correct delineation of said survey.

October 5, A. D. 1970

John R. Turpin
John R. Turpin
Registered Land Surveyor
Minn. Certif. No. 6740

Approved by the Board of Supervisors of White Bear Township, Ramsey County, Minnesota, on October 19, A. D. 1970

Penance M. Rooney
Chairman of the Board

Accepted and approved this 28th day of October, A. D. 1970

Mattie A. Hurley
Roy W. Rye
Thurston Anderson
Plat Commission

R. L. S. J. S. J.
Commissioner of Public Works

Recorded October 30th 1970