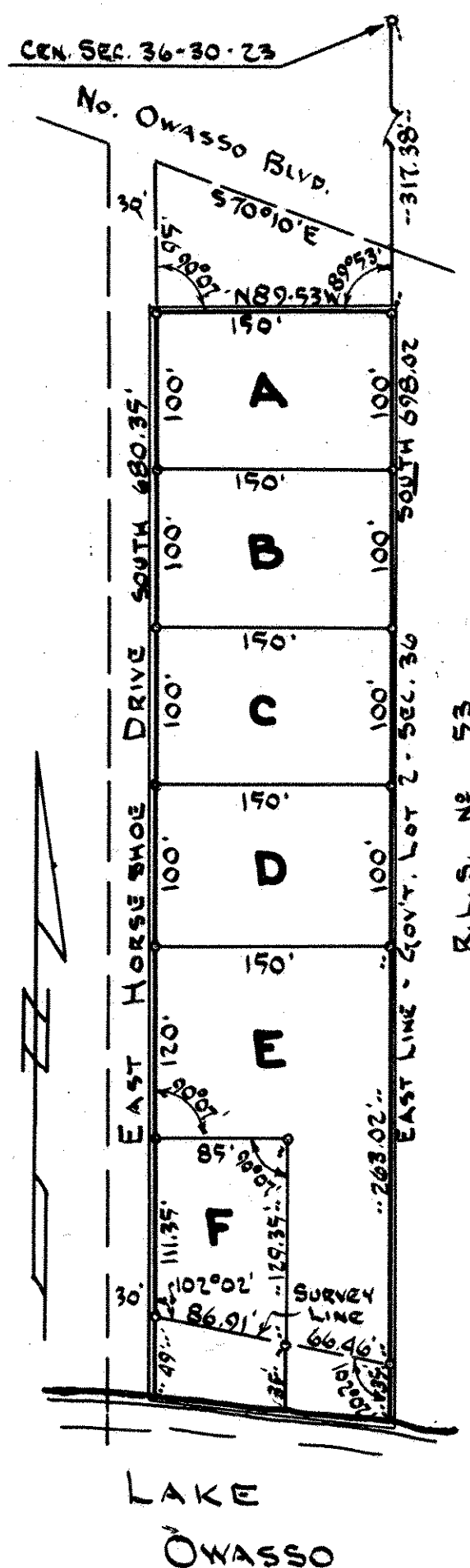


REGISTERED LAND SURVEY No. 194

448309

DUPLICATE



I hereby certify that in accordance with the provisions of Chapter 508, Minnesota statutes of 1949 as revised, I have surveyed the following tract of land in the County of Ramsey and State of Minnesota to wit: All that part of Gov't. Lot 2, Section 36, Town 30 North, Range 23 West lying South & West of Lake Owasso Blvd. and East of Horseshoe Drive East, except that portion described as follows: Beginning at a point 276.18' So. of the center of said Section 36; thence continuing So. along sd. 1/4 line 41.20' to a pt.; thence Westerly on a bearing of N. 89° 53' W and parallel with the E.W. 1/4 line a distance of 150' to a point; thence North, parallel with said N.S. 1/4 line 95.0' to a point; thence SEly on a bearing of S. 70° 10' E along the South side of Lake Owasso Blvd., a distance of 159.48' to point of beg.

That the survey shown herein is a correct delineation of said survey.

o indicates iron monument

Scale 1" = 100'

May 31, 1962

James L. Kurth
Registered Surveyor No. 5332

Accepted and approved this 9th day of October 1962

Alvah D. Cramp
Lyne B. Burt
RR Leig } Plat Commission

William R. R.
Commissioner of Public Works

Accepted by the Village Council of Shoreview, Minnesota, this 29th day of August 1962

Arnold J. Loftis
Mayor

Stanford M. Spurdick
Clerk

OFFICE OF REGISTRAR OF TITLES
RAMSEY COUNTY, MINNESOTA

I hereby certify that I have carefully compared the within copy of Registered Land Survey No. _____ Files of Registrar of Titles, Ramsey County, with the original which was filed in this office this 15 day of Oct, A.D. 1962 at 12:10 o'clock P.M. and find the same to be a true and correct copy thereof.

Robert E. Gannon
Registrar of Titles
S. J. Miller
Deputy