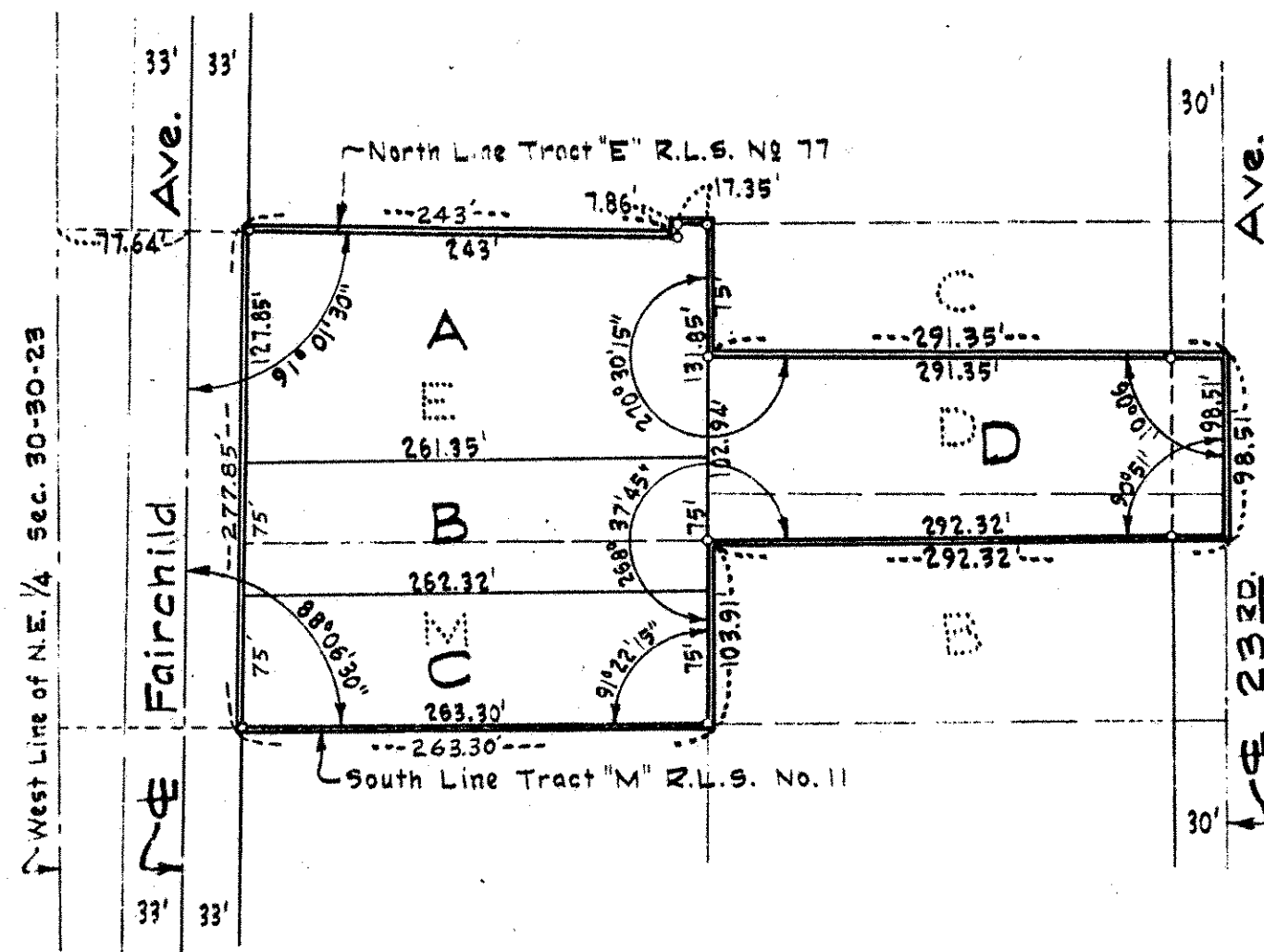


///

I hereby certify that I have carefully compared the within copy of Registered Land Survey No. 142 Files of Registrar of Titles, Ramsey County, with the original which was filed in this office this 10 day of June A. D. 1958 at 10<sup>40</sup> o'clock AM, and find the same to be a true and correct copy thereof.

Registrar of Titles

By J. H. Hendlock Deputy



Scale 1" = 100'

This 22nd day of October 1956.

Registered Surveyor No. 5135

ON MAP M.V. 30  
6-24-58 A.H.