

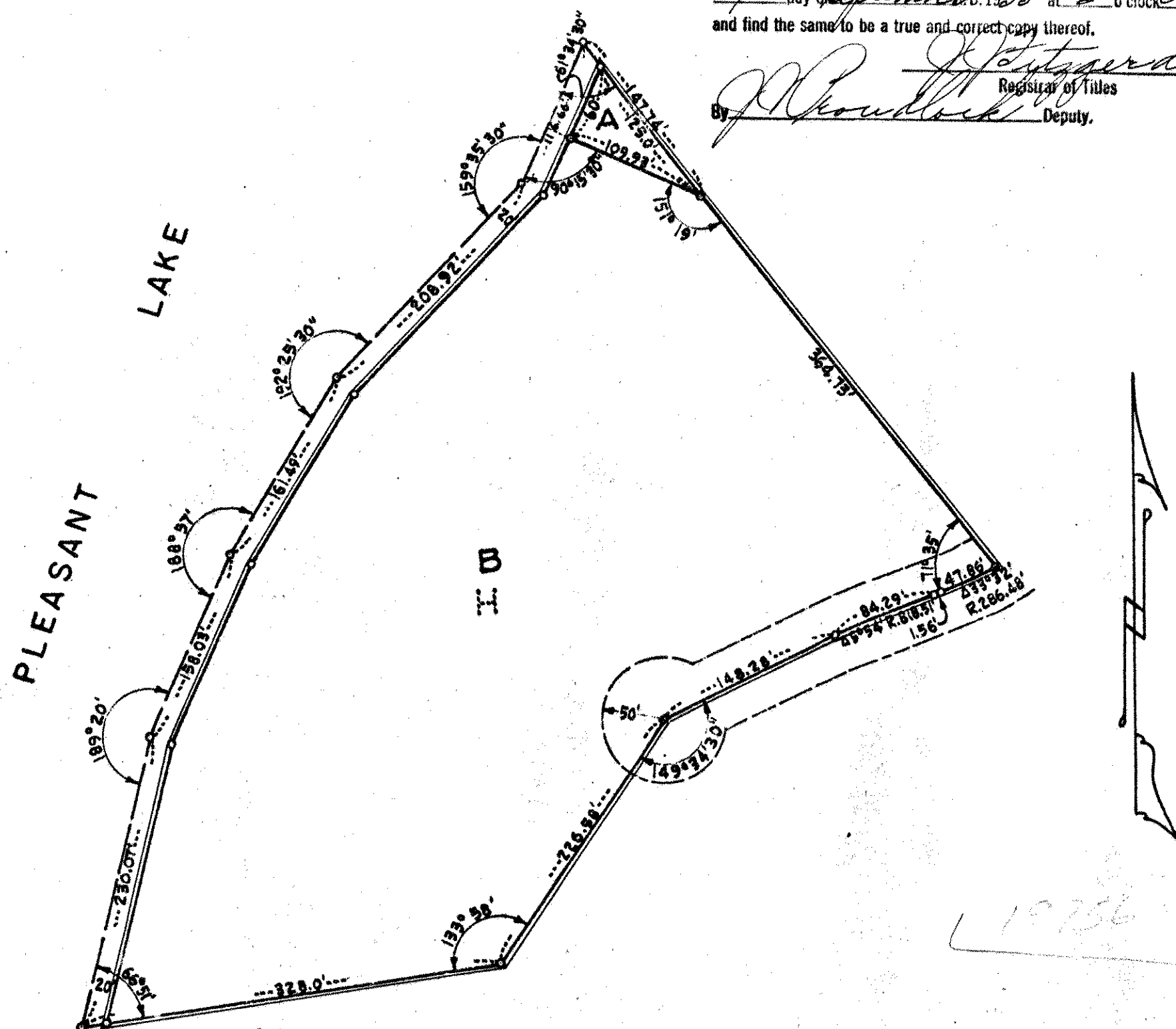
# REGISTERED LAND SURVEY NO. 87 353440

DUPLICATE

OFFICE OF REGISTRAR OF TITLES }  
RAMSEY COUNTY, MINNESOTA }

I Hereby Certify That I have carefully compared the within copy of  
Registered Land Survey No. 87 Files of Registrar of Titles,  
Ramsey County, with the original which was filed in this office this  
7 day of September 1955 at 3 o'clock PM.  
and find the same to be a true and correct copy thereof.

*J. Fitzgerald*  
Registrar of Titles  
By *J. Boudreau* Deputy.



I hereby certify that in accordance with Chapter 508,  
Minnesota Statutes of 1949 as amended, I have surveyed  
the following described tract of land in the County of  
Ramsey, State of Minnesota to wit: Tract "H" of Regis-  
tered Land Survey No. 37. That the survey shown herein  
is a correct delineation of said survey.

This 26th day of Aug 1955

o indicates iron monuments Scale 1" = 100'

*Donald P. Harley*  
Registered Land Surveyor 3527

ON-MAP - MARCH 1-1957  
*Fred Schmidt*

Hand copy  
Traverse  
OC - Index