

BRODSKY ADDITION

KNOW ALL MEN BY THESE PRESENTS: That Joseph A. Brodsky and Elizabeth S. Brodsky, husband and wife, owners, and Premier Bank, a Minnesota corporation, mortgagee of the following described property situated in the City of Shoreview, County of Ramsey, State of Minnesota:

The east 220.00 feet of the North Quarter of the Northeast Quarter of Section 24, Township 30, Range 23, Ramsey County, Minnesota.

Have caused the same to be surveyed and platted as BRODSKY ADDITION and do hereby dedicate to the public for public use forever the thoroughfares and the easements for drainage and utility purposes as shown on this plat.

In witness whereof said Joseph A. Brodsky and Elizabeth S. Brodsky, husband and wife have hereunto set their hands this 15 day of July, 1994.

STATE OF MINNESOTA)
COUNTY OF RAMSEY)
The foregoing instrument was acknowledged before me this 15 day of July, 1994 by Joseph A. Brodsky and by Elizabeth S. Brodsky, husband and wife.

In witness whereof said Premier Bank, a Minnesota corporation, has caused these presents to be signed by its proper officers this 14th day of July, 1994.

Signed: Premier Bank
Sean O. Reagan its President - Anoka
Thomas A. Brice its Assistant Vice President

STATE OF MINNESOTA)
COUNTY OF ANOKA)
The foregoing instrument was acknowledged before me this 14th day of July, 1994 by Sean O. Reagan, President - Anoka, and by Thomas A. Brice, Assistant Vice President of Premier Bank, a Minnesota corporation, on behalf of the corporation.

CONNIE E. HALLBERG
NOTARY PUBLIC - MINNESOTA
ANOKA COUNTY
My Commission Expires Aug. 21, 1996

I hereby certify that I have surveyed and platted the property described on this plat as BRODSKY ADDITION; that this plat is a correct representation of the survey; that all distances are correctly shown on the plat in feet and hundredths of a foot; that all monuments have been correctly placed in the ground as shown; that the outside boundary lines are correctly designated on the plat; and there are no wet lands as defined in Minnesota Statutes, Section 505.02, Subd. 1, or public highways to be designated other than as shown on this plat.

Russell J. Kurth, Land Surveyor
Minnesota License No. 16113

STATE OF MINNESOTA)
COUNTY OF ANOKA)
The foregoing Surveyor's Certificate was acknowledged before me, this 25th day of June, 1994, by Russell J. Kurth, a Licensed Land Surveyor.

KAREN J. KURTH
NOTARY PUBLIC - MINNESOTA
ANOKA COUNTY
My Commission Expires Mar. 13, 1997

City of Shoreview
We do hereby certify that on the 22nd day of July, 1994, the City Council of the City of Shoreview, Minnesota, approved this plat. All monuments set as specified by the City Council and as stated on this plat, according to Minnesota Statutes, Section 505.02, Subd. 1.

James Chalmer Mayor
Tung C. Schwann Clerk

Taxes payable in the year 1994 on the land herein described have been paid, also there are no delinquent taxes and transfer entered, this 22 day of JULY, 1994.

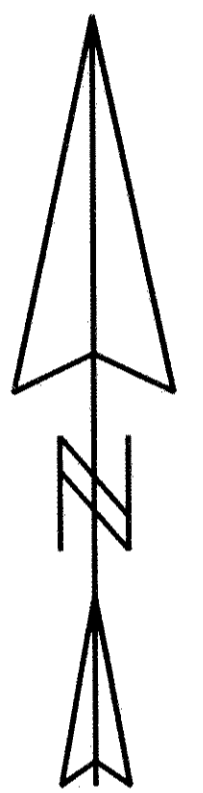
Lou McKenna, Director By Abdur Khan, Deputy
Department of Property Taxation

Pursuant to Minnesota Statutes, Section 383A.42, this plat has been examined and is approved this 22nd day of July, 1994, and the conditions of Minnesota Statutes, Section 505.03, Subdivision 2, have been fulfilled.

David D. Claypool, R.L.S.
Ramsey County Surveyor

County Recorder, County of Ramsey, State of Minnesota
I hereby certify that this plat of BRODSKY ADDITION was filed in the office of the County Recorder for public record on this 26 day of July, 1994, at 3:11 o'clock P.M. and was duly filed in Book 109 of Plats, Page 46, as Document Number 2820478.

Lou McKenna, County Recorder By _____ Deputy



RAMSEY COUNTY COORDINATES
Y=205184.906
X=568884.561

STATE TRUNK HIGHWAY NO. 96

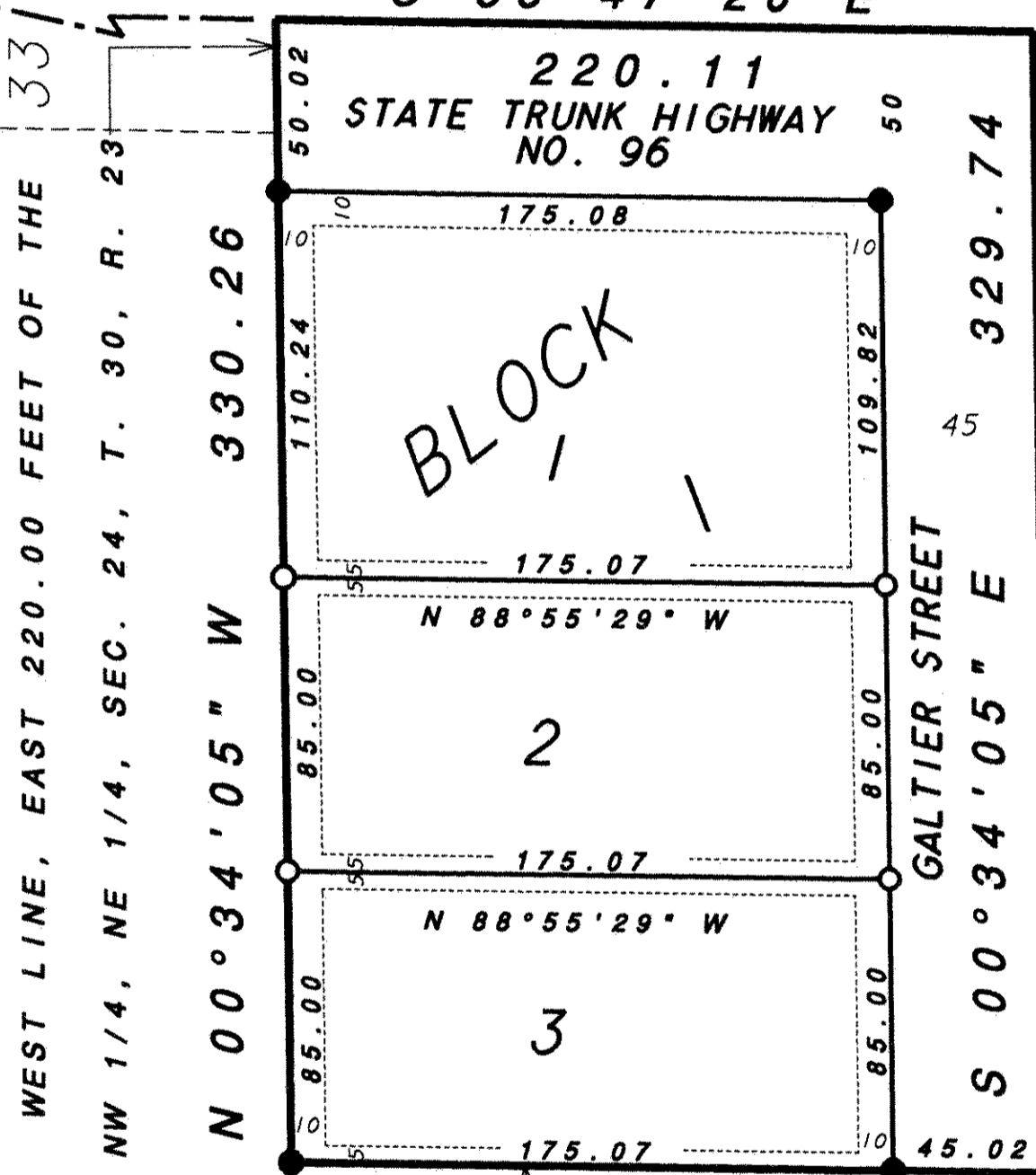
NORTH LINE, NE 1/4, SECTION 24, TOWNSHIP 30, RANGE 23

S 88°47'20" E 1091.90
S 88°47'20" E 1312.01

RAMSEY COUNTY COORDINATES
Y=205128.440
X=571607.998

N 1/4 CORNER
SEC. 24, T. 30, R. 23
RAMSEY COUNTY
CAST IRON MONUMENT

NE CORNER
SEC. 24, T. 30, R. 23
RAMSEY COUNTY
CAST IRON MONUMENT

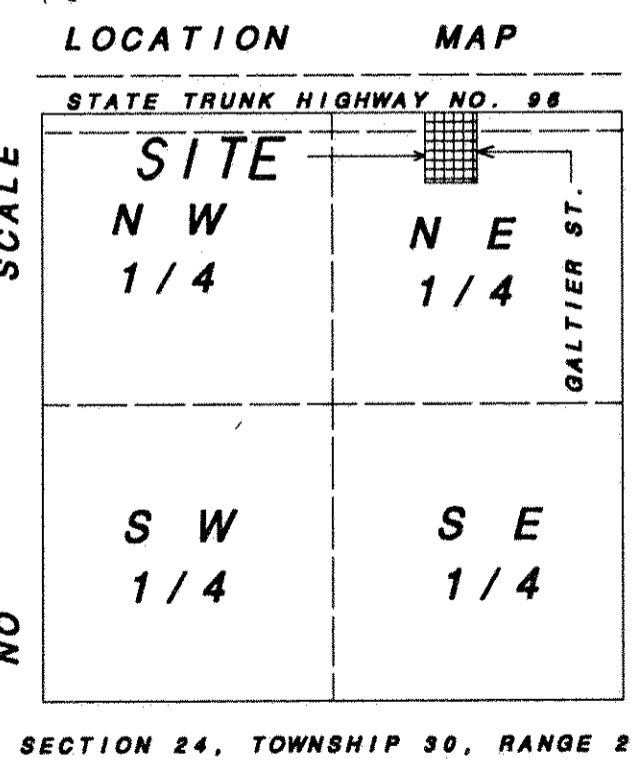


EAST LINE, NW 1/4, NE 1/4, SEC. 24, T. 30, R. 23
LOT 5
LOT 6
EAST LINE, TUDOR OAKS
EAST LINE, EVOKER



DRAINAGE AND UTILITY EASEMENTS SHOWN THUS:

BEING FIVE FEET IN WIDTH AND ADJOINING LOT LINES AND TEN FEET IN WIDTH AND ADJOINING STREET AND REAR LOT LINES.



ORIENTATION OF THIS BEARING SYSTEM IS BASED UPON RAMSEY COUNTY COORDINATES, NORTH AMERICAN DATUM OF 1983.

- DENOTES 1/2 INCH IRON PIPE MONUMENT FOUND AND MARKED BY LICENSE NUMBER 9235, UNLESS OTHERWISE SHOWN.
- DENOTES 3/4 INCH BY 15 INCH IRON MONUMENT SET AND MARKED BY LICENSE NUMBER 16113.