

HUNTINGTON HILLS SOUTH THIRD ADDITION

KNOW ALL MEN BY THESE PRESENTS: That Good Value Homes, Inc., a Minnesota Corporation, owner and Builders Development & Finance, Inc., a Minnesota corporation, mortgagee of the following described property situated in the City of Maplewood, County of Ramsey, State of Minnesota:

That part of Outlot D, HUNTINGTON HILLS SOUTH, which lies Southerly of the following described line: Commencing at the southeast corner of Outlot C, said HUNTINGTON HILLS SOUTH; thence North 00 degrees 01 minutes 04 seconds West, along the west line of said Outlot D a distance of 90.02 feet, to the point of beginning of the line to be described; thence North 88 degrees 53 minutes 39 seconds East to the east line of said Outlot D, and there terminating;

And

Outlot E; all in HUNTINGTON HILLS SOUTH;

And

Outlot B; all in HUNTINGTON HILLS SOUTH SECOND ADDITION.

Have caused the same to be surveyed and platted as HUNTINGTON HILLS SOUTH THIRD ADDITION and do hereby dedicate to the public for public use forever the thoroughfare and drainage and utility easements as shown on this plat.

In witness whereof said Good Value Homes, Inc., a Minnesota Corporation, has caused these presents to be signed by its proper officers this 11 day of June, 19 93.

Signed: Good Value Homes, Inc.

Betty R. Hardle
Betty R. Hardle, Chief Executive Officer

John R. Peterson
John R. Peterson, Vice President

In witness whereof said Builders Development & Finance, Inc., a Minnesota Corporation, has caused these presents to be signed by its proper officer this 11 day of June, 19 93.

Signed: Builders Development & Finance, Inc.

Tim N. Golie
Tim N. Golie, Assistant Vice President

State of Minnesota
County of Anoka

The foregoing instrument was acknowledged before me this 11 day of June, 19 93 by Betty R. Hardle, Chief Executive Officer and by John R. Peterson, Vice President of Good Value Homes, Inc., a Minnesota Corporation, on behalf of the corporation.

Marie E. Nelson
Notary Public, Anoka County, Minnesota
My Commission Expires OCTOBER 24, 1996

State of Minnesota
County of Anoka

The foregoing instrument was acknowledged before me this 11 day of June, 19 93 by Tim N. Golie, Assistant Vice President of Builders Development & Finance, Inc., a Minnesota Corporation, on behalf of the corporation.

Marie E. Nelson
Notary Public, Anoka County, Minnesota
My Commission Expires OCTOBER 24, 1996

I hereby certify that I have surveyed and platted the property described on this plat as HUNTINGTON HILLS SOUTH THIRD ADDITION; that this plat is a correct representation of the survey; that all distances are correctly shown on the plat in feet and hundredths of a foot; that all monuments have been correctly placed in the ground as shown; that the outside boundary lines are correctly designated on the plat; and there are no wet lands as defined in Minnesota Statutes, Section 505.02, Subd. 1, or public highways to be designated other than as shown on this plat.

Marvin G. Lovlein
Marvin G. Lovlein, Land Surveyor
Minnesota License Number 17259

State of Minnesota
County of Anoka

The foregoing Surveyor's Certificate was acknowledged before me this 11 day of June, 19 93 by Marvin G. Lovlein, a Licensed Land Surveyor.

Marie E. Nelson
Notary Public, Anoka County, Minnesota
My Commission Expires OCTOBER 24, 1996

City of Maplewood

We do hereby certify that on the 10th day of April, 19 93, the City Council of the City of Maplewood, Minnesota, approved this plat. All monuments will be set as specified by the City Council and as stated on this plat, according to Minnesota Statutes, Section 505.02, Subd. 1.

Jim Fortner, Mayor Laurel E. Amundson, Clerk

Taxes payable in the year 19 93 on the land herein described have been paid, also there are no delinquent taxes and transfer entered this 14th day of June, 19 93.

Lou McKenna, Director
Department of Property Taxation
By Duke Wallert, Deputy

Pursuant to Minnesota Statutes, Section 383A.42, this plat has been examined and is approved this 21st day of June, 19 93 and the conditions of Minnesota Statutes, Section 505.03, Subdivision 2, have been fulfilled.

David D. Claypool
David D. Claypool, R.L.S.
Ramsey County Surveyor

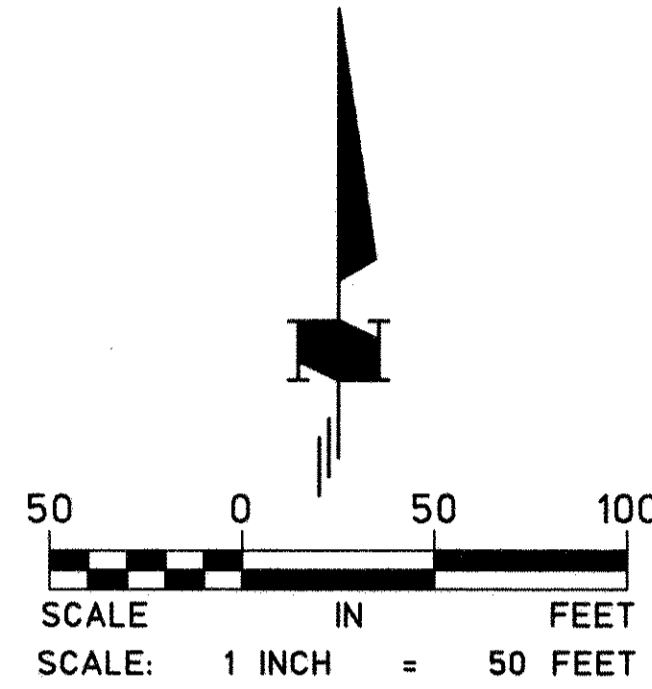
Registrar of Titles, County of Ramsey, State of Minnesota

I hereby certify that this plat of HUNTINGTON HILLS SOUTH THIRD ADDITION was filed in the office of the Registrar of Titles for public record on this 23 day of JUNE, 19 93, at 1:00 o'clock P.M. and was duly filed in Book 39 of Plats, Pages 34 and 35, as Document Number 1016777.

Lou McKenna, Registrar of Titles

By _____, Deputy

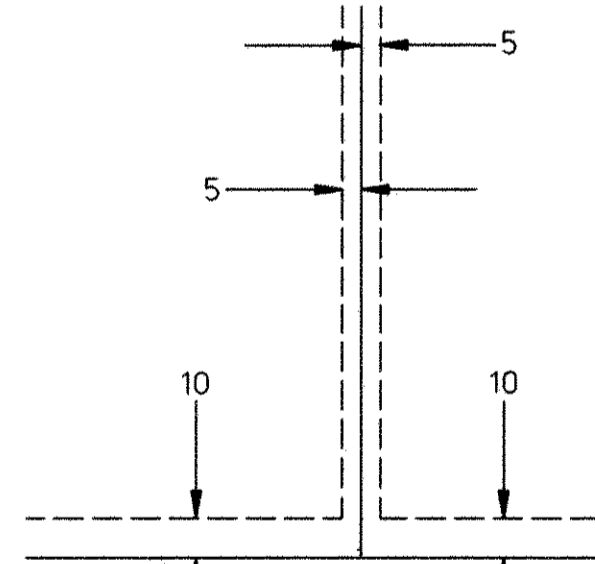
HUNTINGTON HILLS SOUTH THIRD ADDITION



BEARING NOTE:
 FOR THE PURPOSES OF THIS PLAT, THE SOUTH LINE OF THE SOUTHWEST QUARTER OF SECTION 12, TOWNSHIP 28, RANGE 22, ACCORDING TO THE RECORDED PLAT OF HUNTINGTON HILLS SOUTH BEARS S 88°53'39"W

- denotes 5/8 inch by 18 inch iron rebar monument set and capped with a plastic cap stamped land corner 17259
- denotes found 1/2 inch iron pipe with plastic cap stamped R.L.S. 14921

DRAINAGE AND UTILITY EASEMENTS ARE SHOWN THUS:



being 5 feet in width, unless otherwise indicated, and adjoining lot lines, and 10 feet in width and adjoining street lines, as shown on the plat.

RAMSEY COUNTY COORDINATE
 X (EASTING) 598057.094
 Y (NORTHING) 147020.415

RAMSEY COUNTY CAST IRON MONUMENT AT SOUTHWEST CORNER OF SECTION 12, TOWNSHIP 28, RANGE 22.

SOUTHWEST CORNER EAST 1/2-SE 1/4-SW 1/4 SEC. 12, TOWNSHIP 28, RANGE 22

SOUTH LINE SE 1/4-SW 1/4 SEC. 12, TOWNSHIP 28, RANGE 22

BEARING AS PER COUNTY COORDINATES = S 88°34'06" W

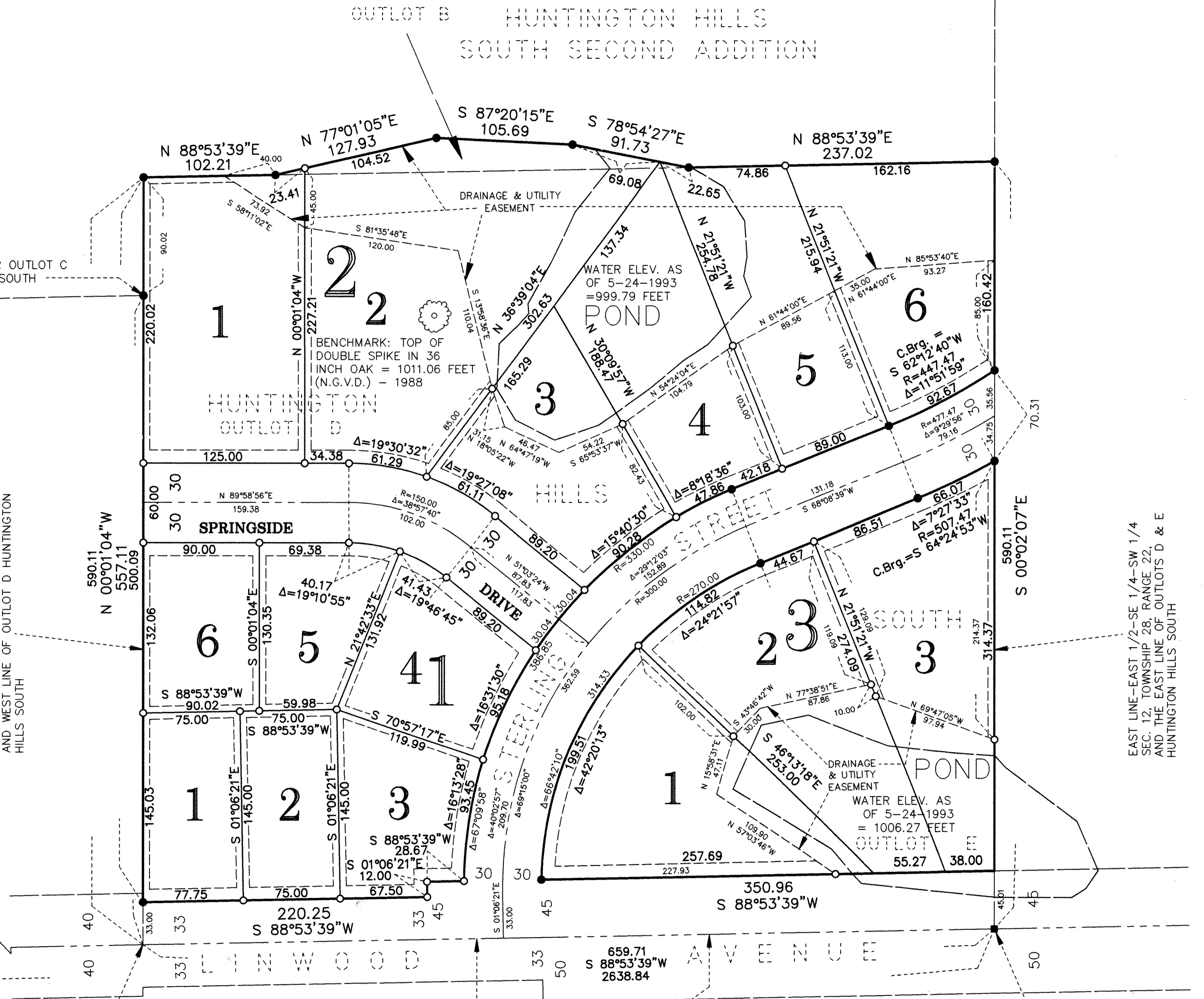
RAMSEY COUNTY COORDINATE
 X (EASTING) 600695.085
 Y (NORTHING) 147086.341

RAMSEY COUNTY STONE MONUMENT AT SOUTH 1/4 CORNER OF SECTION 12, TOWNSHIP 28, RANGE 22.

SOUTHEAST CORNER OUTLOT C HUNTINGTON HILLS SOUTH

WEST LINE-EAST 1/2-SE 1/4-SW 1/4 SEC. 12, TOWNSHIP 28, RANGE 22, AND WEST LINE OF OUTLOT D HUNTINGTON HILLS SOUTH

EAST LINE-EAST 1/2-SE 1/4-SW 1/4 SEC. 12, TOWNSHIP 28, RANGE 22, AND THE EAST LINE OF OUTLOTS D & E HUNTINGTON HILLS SOUTH



CHERRIER LAND SURVEYORS, INC.
 REGISTERED PROFESSIONAL • LAND SURVEYORS