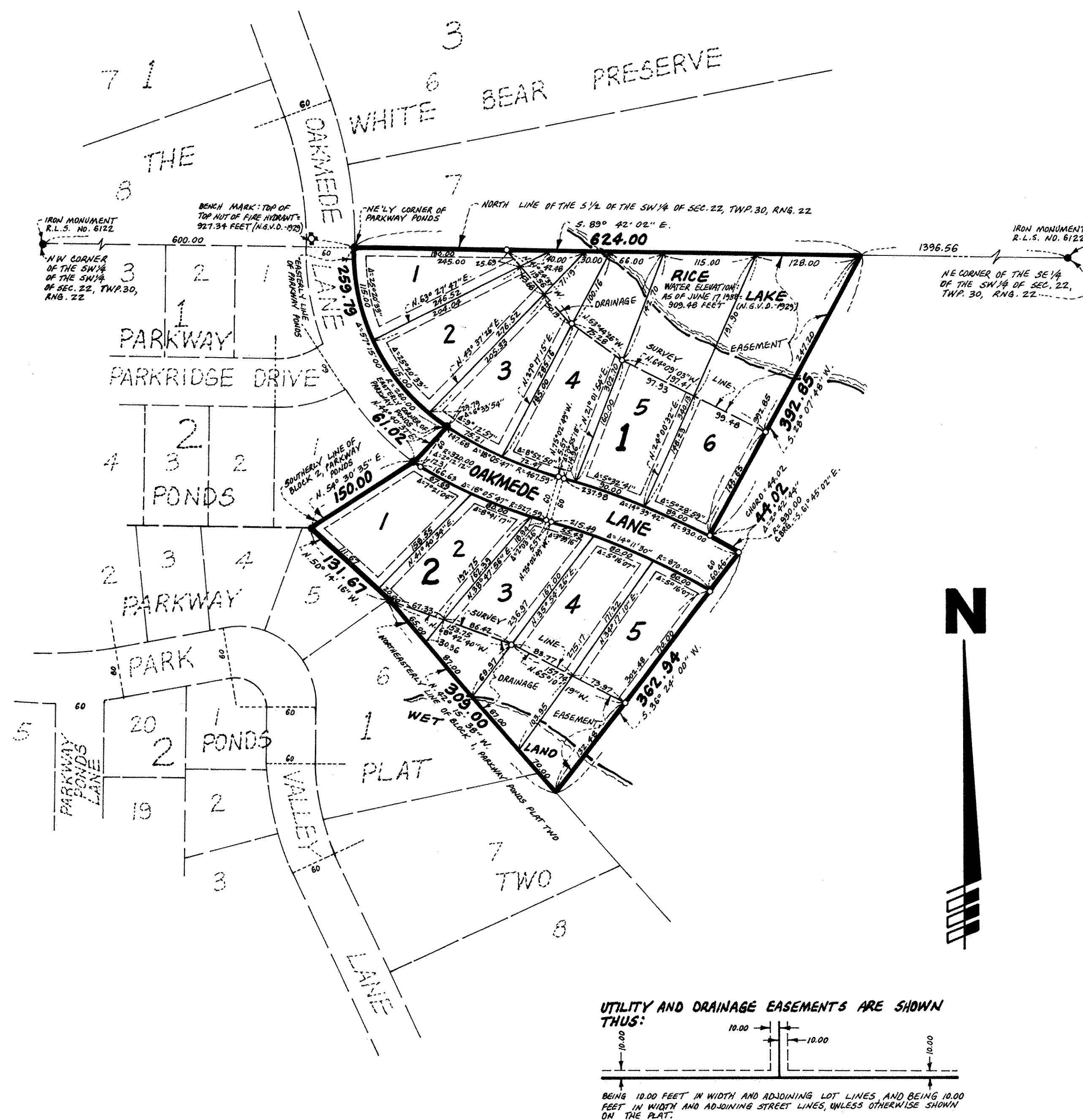


POND VIEW PRESERVE PLAT ONE

BEARINGS SHOWN ARE ON AN ASSUMED DATUM

- DENOTES IRON MONUMENT SET
- DENOTES IRON MONUMENT FOUND

BENCH MARK LOCATION: HYDRANT IS LOCATED 15.00 FEET
NORTHEAST OF THE NORTHEAST CORNER OF LOT 1, BLOCK 1, PARKWAY PONDS



Know All Persons By These Presents that WALL & HOWE Development Corp., a Minnesota corporation, owner, and American Bank of Burnsville, a Minnesota corporation, mortgagee of the following described property situated in the Township of White Bear, Ramsey County, Minnesota:

That part of the South Half of the Southwest Quarter of Section 22, Township 30, Range 22, described as follows: Beginning at the Northeasterly corner of PARKWAY PONDS according to the recorded Plat thereof on file in the office of the Ramsey County Recorder; thence on an assumed bearing of South 89 degrees 42 minutes 02 seconds East along the North line of said South Half of the Southwest Quarter, a distance of 624.00 feet; thence South 28 degrees 07 minutes 48 seconds West, a distance of 392.85 feet; thence Southeasterly 44.02 feet along a nontangential curve being concave to the Southwest and having a radius of 930.00 feet and a chord bearing of South 61 degrees 45 minutes 02 seconds East; thence South 36 degrees 24 minutes 00 seconds West, a distance of 362.94 feet to the Northeasterly line of Block 1, PARKWAY PONDS PLAT TWO according to the recorded plat thereof on file in the office of the Ramsey County Recorder; thence Northwesterly along the Northeasterly line of said Block 1 to the Southerly line of Block 2, PARKWAY PONDS according to the recorded plat thereof on file in the office of the Ramsey County Recorder; thence Northeasterly along the Boundary line of said PARKWAY PONDS to the most Easterly corner thereof; thence Northwesterly along the Boundary line of said PARKWAY PONDS to the point of beginning.

Have caused the same to be surveyed, platted and known as POND VIEW PRESERVE PLAT ONE and do hereby dedicate to the public for public use forever the lane and utility and drainage easements as shown on the plat. In witness whereof said WALL & HOWE Development Corp., a Minnesota corporation, has caused these presents to be signed by its proper officers this 14th day of September, 1988. In witness whereof said American Bank of Burnsville, a Minnesota corporation, has caused these presents to be signed by its proper officers and its corporate seal to be hereunto affixed this 14th day of September, 1988.

Signed: WALL & HOWE Development Corp.

Leonard W. Pratt, President
Leonard W. Pratt

Warren O. Olson, Secretary
Warren O. Olson

Signed: American Bank of Burnsville

Robert J. Wimbush, its President
Robert J. Wimbush

Robert J. Wimbush, its Clerk
Robert J. Wimbush

STATE OF MINNESOTA)
COUNTY OF RAMSEY) The foregoing instrument was acknowledged before me this 14th day of Sept., 1988, by Leonard W. Pratt, President and by Warren O. Olson, Secretary of WALL & HOWE Development Corp., a Minnesota corporation, on behalf of the corporation.

PATRICIA A. BARRY
NOTARY PUBLIC - MINNESOTA
RAMSEY COUNTY
My Commission Expires 10-08-91

Patricia A. Barry
Notary Public, Ramsey County, Minnesota
My Commission Expires 10-08-91

STATE OF MINNESOTA)
COUNTY OF RAMSEY) The foregoing instrument was acknowledged before me this 14th day of September, 1988, by Scott S. Scharf, President and by Robert J. Wimbush, its Secretary of American Bank of Burnsville, a Minnesota corporation, on behalf of the corporation.

Patricia A. Barry
NOTARY PUBLIC - MINNESOTA
RAMSEY COUNTY
My Commission Expires 10-08-91

Patricia A. Barry
Notary Public, Ramsey County, Minnesota
My Commission Expires 10-08-91

I, Arthur E. Ostlund, hereby certify that this plat is a correct representation of said survey; that all distances are correctly shown on the plat; that all monuments have been correctly placed in the ground as shown; that the outside boundary lines are correctly designated on the plat; and there are no wet lands, easements or public highways other than as shown thereon.

Arthur E. Ostlund, Land Surveyor
Arthur E. Ostlund, Land Surveyor
Minnesota Registration No. 6122

STATE OF MINNESOTA)
COUNTY OF RAMSEY) The Surveyor's Certificate was subscribed and sworn to before me, a Notary Public, this 14th day of Sept., 1988.

PATRICIA A. BARRY
NOTARY PUBLIC - MINNESOTA
RAMSEY COUNTY
My Commission Expires 10-08-91

Patricia A. Barry
Notary Public, Ramsey County, Minnesota
My Commission Expires 10-08-91

Approved and accepted by the Town Board of the Township of White Bear, Minnesota, this 14th day of September, 1988.

Robert J. Wimbush, Chairman

W. J. Malinen, Clerk

Taxes for the year 1988 on the land described herein paid, no delinquent taxes and transfer entered, this 27th day of September, 1988.

Lou McKenna, Director
Department of Property Taxation

Noella C. Buchmayer, Deputy

Pursuant to Chapter 7, Minnesota Laws of 1976, this plat has been reviewed and approved, this 29th day of September, 1988, and the conditions of Minnesota Statutes, Section 505.03, Subdivision 2, have been fulfilled.

David D. Claypool, Ramsey County Surveyor

County Recorder, County of Ramsey, State of Minnesota
I hereby certify that this plat of POND VIEW PRESERVE PLAT ONE was filed in this office this 3rd day of October, 1988, at 3:40 o'clock P. M. and was filed in Book 103 of Plats, Page 35, as Document No. 2462008.

Lou McKenna, County Recorder

By _____ Deputy