

APACHE COURT

LOT SURVEYS COMPANY, INC.
LAND SURVEYORS

HARSTAD
2ND ADD.

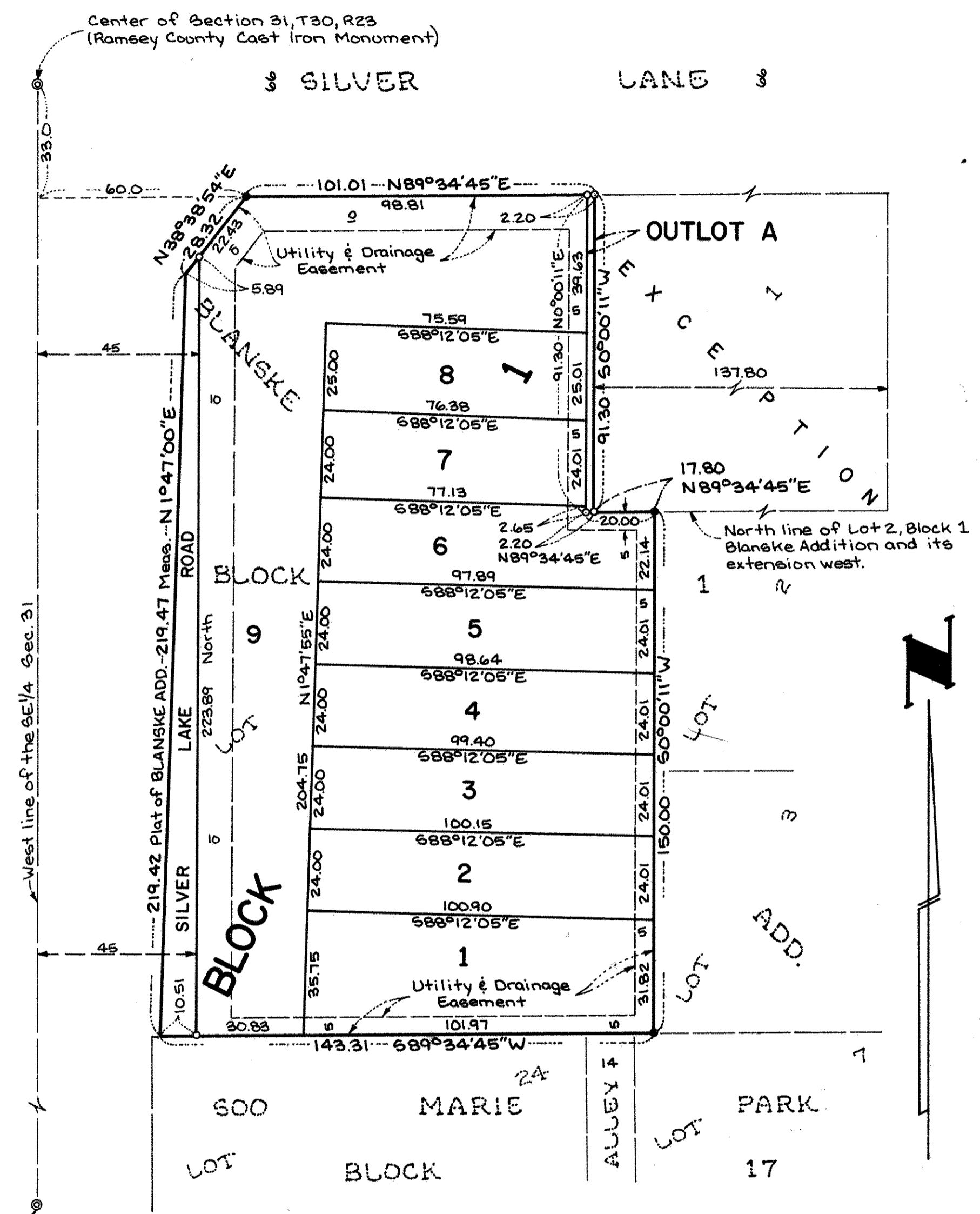
CITY OF
ST. ANTHONY

APACHE PLAZA 2ND ADD.

108

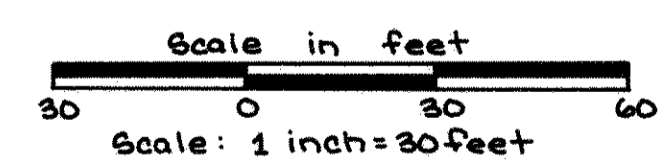
75

75



South 1/4 corner Sec 31, T30, R.23 (Ramsay County East Iron Monument)

Located in the NW 1/4 of the SE 1/4 of Sec 31, T30N, R23W.



Orientation of this bearing system is assumed

• Denotes Iron Monument Found ◦ Denotes Iron Monument Set

Pursuant to Chapter 7, Minnesota Laws of 1976, this plat has been reviewed and approved, this 20th day of April, 1987, and the conditions of Minnesota Statutes, Section 505.03, Subdivision 2, have been fulfilled.

David D. Claypool
David D. Claypool, Ramsey County Surveyor

County Recorder, County of Ramsey, State of Minnesota
I hereby certify that this plat of APACHE COURT was filed in this office this 24th day of April, 1987, at 11:49 o'clock A.M. and was filed in Book 101 of Plats, Page 5 as Document No. 2376508.

John C. McLaughlin, County Recorder

By _____ Deputy

Know All Persons By These Presents that Bernard J. Blanske and Beverly Blanske, husband and wife, owners of the following described property situated in the City of St. Anthony, Ramsey County, Minnesota:

Lot 1, Block 1, BLANSKE ADDITION, except the East 137.80 feet of that part of said Lot 1 lying North of the North line of Lot 2 Block 1, BLANSKE ADDITION and its extension West.
Have caused the same to be surveyed, platted and known as APACHE COURT and do hereby dedicate to the public for public use forever the Road and easements for utility and drainage purposes as shown on the plat. In witness whereof said Bernard J. Blanske, husband of Beverly Blanske, has hereunto set his hand this 16th day of April, 1987. In witness whereof said Beverly Blanske, wife of Bernard J. Blanske, has hereunto set her hand this 13th day of April, 1987.

Signed:
Bernard J. Blanske
Bernard J. Blanske
Beverly Blanske
Beverly Blanske