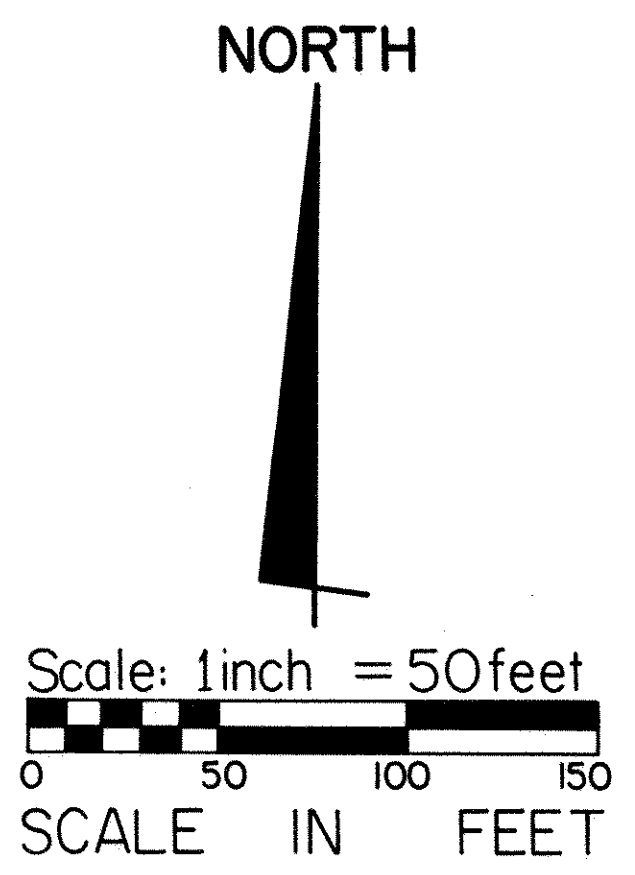
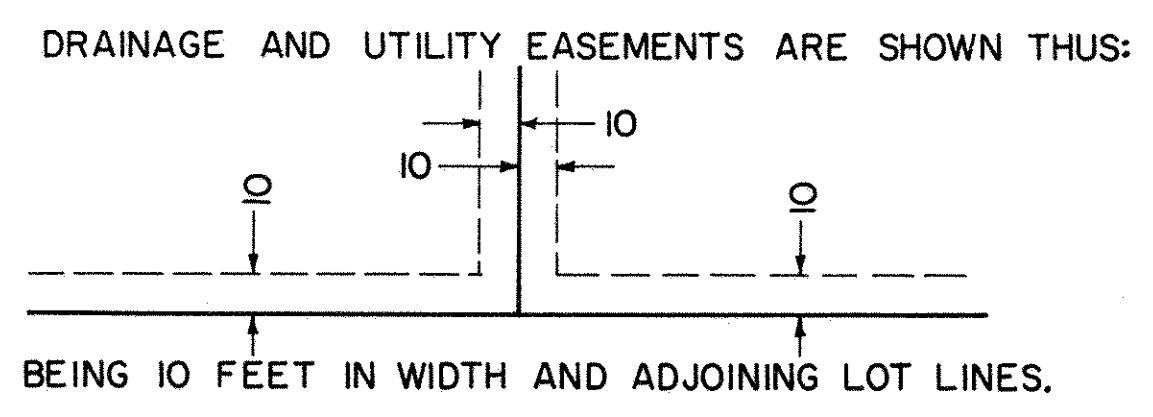
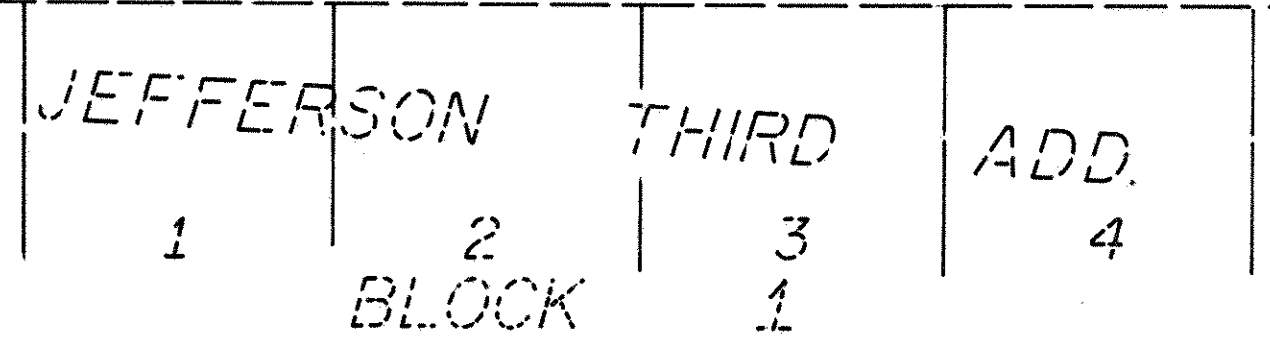
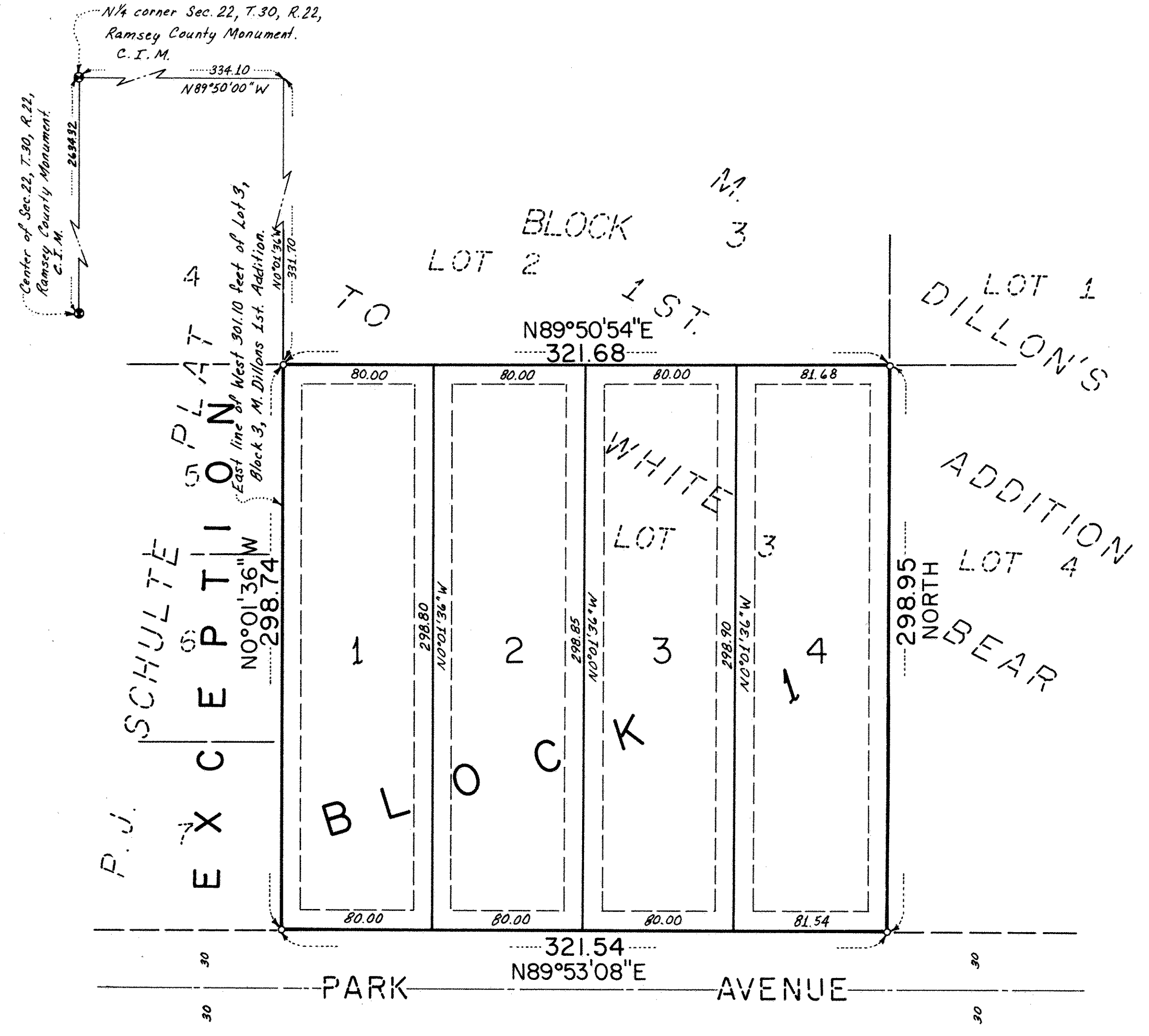


WILCOX'S ADDITION



E.G. RUD & SONS INC.
LAND SURVEYORS

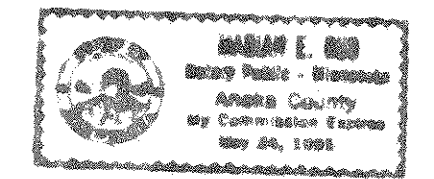
Know All Persons By These Presents that Brian B. Wilcox and Roxanne Wilcox, husband and wife, owners of the following described property situated in the Township of White Bear, Ramsey County, Minnesota:

Lot 3, except the west 301.1 feet thereof, Block 3, M. Dillon's 1st Addition to White Bear, Ramsey County, Minnesota.

Have caused the same to be surveyed, platted and known as WILCOX'S ADDITION and do hereby dedicate to the public for public use forever the drainage and utility easements as shown on the plat. In witness whereof said Brian B. Wilcox and Roxanne Wilcox, husband and wife, hereunto set their hands this 10th day of March, 1987.

Signed:
Brian B. Wilcox
 Brian B. Wilcox
Roxanne Wilcox
 Roxanne Wilcox

STATE OF MINNESOTA
 COUNTY OF Ramsey
 The foregoing instrument was acknowledged before me this 10th day of March, 1987, by Brian B. Wilcox and by Roxanne Wilcox, husband and wife.

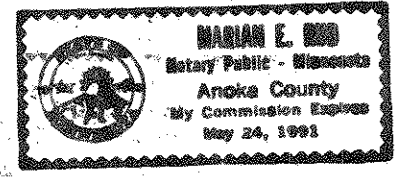


Marian E. Rud
 Notary Public, Anoka County, Minnesota
 My Commission Expires May 24, 1991

I, Ernest G. Rud, hereby certify that I have surveyed and platted the property described in the dedication of this plat as WILCOX'S ADDITION; that this plat is a correct representation of said survey; that all distances are correctly shown on the plat; that all monuments have been correctly placed in the ground as shown; that the outside boundary lines are correctly designated on the plat; and there are no wet lands or public highways other than as shown thereon.

Ernest G. Rud
 Ernest G. Rud, Land Surveyor
 Minnesota Registration No. 9808

STATE OF MINNESOTA
 COUNTY OF ANOKA
 The Surveyor's Certificate was subscribed and sworn to before me, a Notary Public, this 2nd day of March, 1987.



Marian E. Rud
 Notary Public, Anoka County, Minnesota
 My Commission Expires May 24, 1991

Approved and accepted by the Town Board of the Township of White Bear, Minnesota, this 16th day of March, 1987.

George A. Jungblum
 Chairman
W. J. Malinen
 Clerk

Taxes for the year 1987 on the land described herein paid, no delinquent taxes and transfer entered this 13 day of April, 1987.

Lou McKenna Director By D. McDonough Deputy
 Department of Property Taxation

Pursuant to Chapter 7, Minnesota Laws of 1976, this plat has been reviewed and approved this 13th day of April, 1987, and the conditions of Minnesota Statutes, Section 505.03, Subdivision 2, have been fulfilled.

David D. Claypool
 David D. Claypool
 Acting Ramsey County Surveyor

County Recorder, County of Ramsey, State of Minnesota
 I hereby certify that this plat of WILCOX'S ADDITION was filed in this office this 14th day of April, 1987, at 11:22 o'clock A.M. and was filed in Book 120 of Plats, Page 47, as Document No. 2574152.

John C. McLaughlin, County Recorder By _____ Deputy

Bearings are on an assumed datum.
 • Denotes found Monuments.
 o Denotes Iron Monument set.