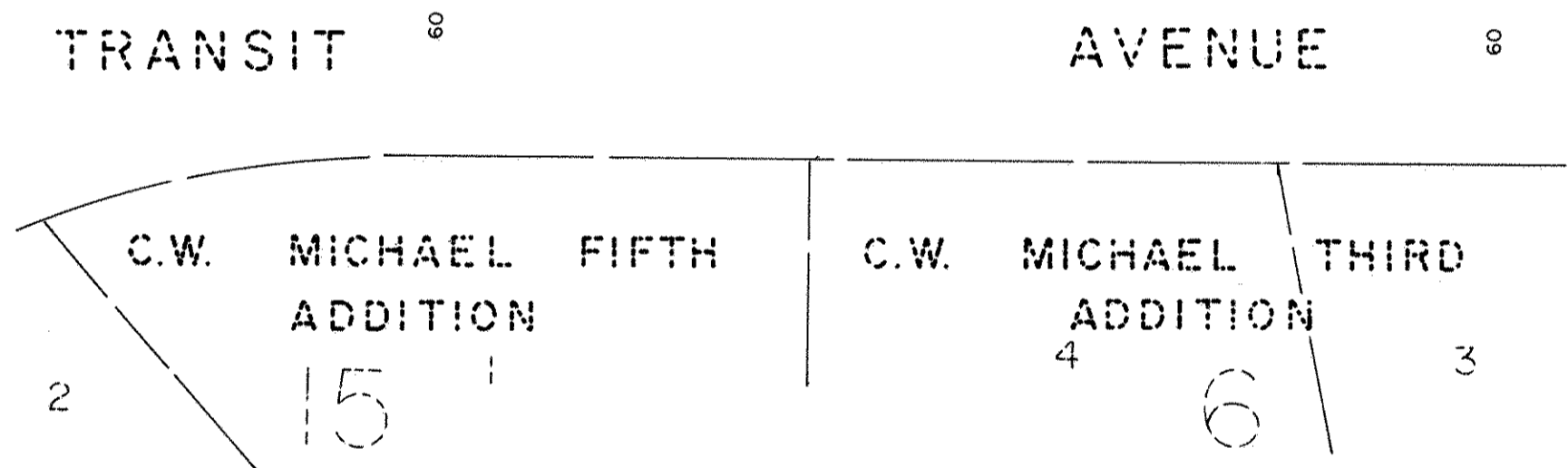
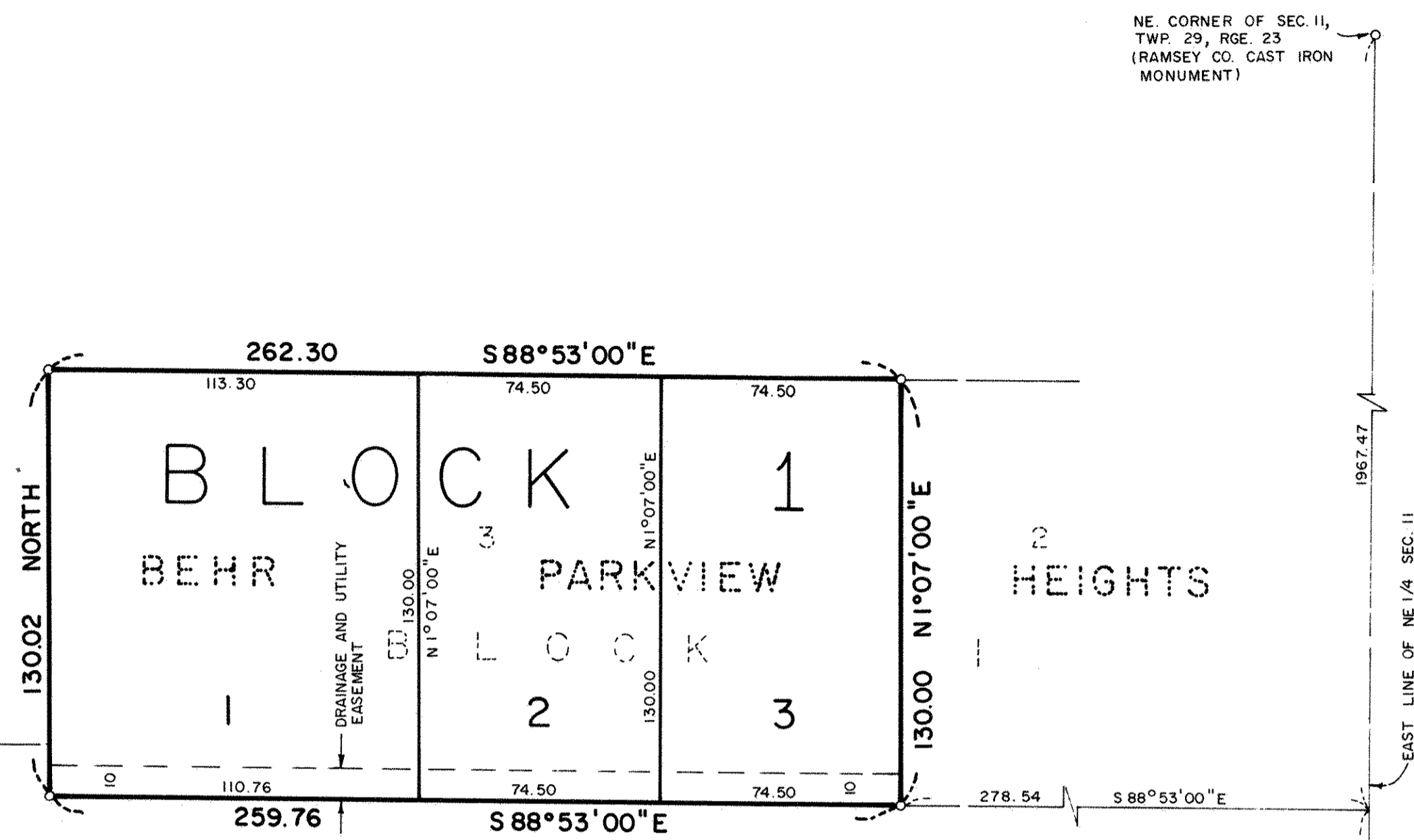


COPPERSMITH PARK PLACE ESTATES

CITY OF ROSEVILLE
RAMSEY COUNTY, MINNESOTA



SCALE: 1 INCH = 40 FEET

Bearings are on an assumed datum.

o Denotes 1/2 inch by 14 inch iron pipe monument set with plastic cap marked RLS 8625, unless otherwise shown.

LOCATED IN SE1/4 OF NE1/4
SEC. II, TWP. 29 N., RGE. 23 W.

Know All Persons By These Presents that Paul S. Behr and Diane C. Behr, husband and wife, fee owners, and Joseph W. Coppersmith and Colleen L. Coppersmith, husband and wife, contract purchasers of the following described property situated in the City of Roseville, Ramsey County, Minnesota:

Lot 3, Block 1, BEHR PARKVIEW HEIGHTS, according to the recorded plat thereof, on file and of record in the office of the County Recorder, Ramsey County, Minnesota.

Have caused the same to be surveyed, platted and known as COPPERSMITH PARK PLACE ESTATES and do hereby dedicate to the public for public use forever the drainage and utility easement as shown on the plat.

Have hereunto set our hands this 27 day of Jan, 1987.

Signed: Paul S. Behr Paul S. Behr Diane C. Behr Diane C. Behr

Have hereunto set our hands this 19th day of FEBRUARY, 1987.

Signed: Joseph W. Coppersmith Joseph W. Coppersmith Colleen L. Coppersmith Colleen L. Coppersmith

State of Minnesota
County of Ramsey

The foregoing instrument was acknowledged before me this 27th day of January, 1987, by Paul S. Behr and by Diane C. Behr, husband and wife.

Anna M. Frattalone
Notary Public, Ramsey County, Minnesota
My Commission Expires 2-6-91

State of Minnesota
County of Anoka

The foregoing instrument was acknowledged before me this 19th day of FEBRUARY, 1987, by Joseph W. Coppersmith and by Colleen L. Coppersmith, husband and wife.

Douglas W. Strong
Notary Public, Anoka County, Minnesota
My Commission Expires Nov. 12, 1992

I, Delmar H. Schwanz, hereby certify that I have surveyed and platted the property described in the dedication of this plat as COPPERSMITH PARK PLACE ESTATES; that this plat is a correct representation of said survey; that all distances are correctly shown on the plat; that all monuments have been correctly placed in the ground as shown; that the outside boundary lines are correctly designated on the plat; and there are no wet lands, easements or public highways other than as shown thereon.

Delmar H. Schwanz
Registered Land Surveyor
Minnesota Registration No. 8625

State of Minnesota
County of Dakota

The Surveyor's Certificate was subscribed and sworn to before me, a Notary Public, this 13th day of JANUARY, 1987.

FRANCES J. SEASHOLTZ
NOTARY PUBLIC-MINNESOTA
DAKOTA COUNTY
My Commission Expires Jan. 9, 1991

Frances J. Seasholtz
Notary Public, Dakota County, Minnesota
My Commission Expires 1-9-91

Approved and accepted by the City Council of the City of Roseville, Minnesota, this 23 day of FEBRUARY, 1987.

Donna R. Hiski Mayor James J. Aren Clerk

Taxes for the year 1987 on land described herein paid, no delinquent taxes and transfer entered, this 27th day of FEBRUARY, 1987.

Lou McKenna Director Stephanie Cowley Deputy
Department of Property Taxation

Pursuant to Chapter 7, Minnesota Laws of 1976, this plat has been reviewed and approved, this 27th day of February, 1987, and the conditions of Minnesota Statutes, Section 505.03, Subdivision 2, have been fulfilled.

David D. Claypool
David D. Claypool
Acting Ramsey County Surveyor

County Recorder, County of Ramsey, State of Minnesota

I hereby certify that this plat of COPPERSMITH PARK PLACE ESTATES was filed in this office this 27 day of February, 1987, at 2:39 o'clock P.M. and was filed in Book 100 of Plats, Page 35, as Document No. 2364763.

By: _____ Deputy
John C. McLoughlin, County Recorder

DELMAR H. SCHWANZ
LAND SURVEYORS INC.