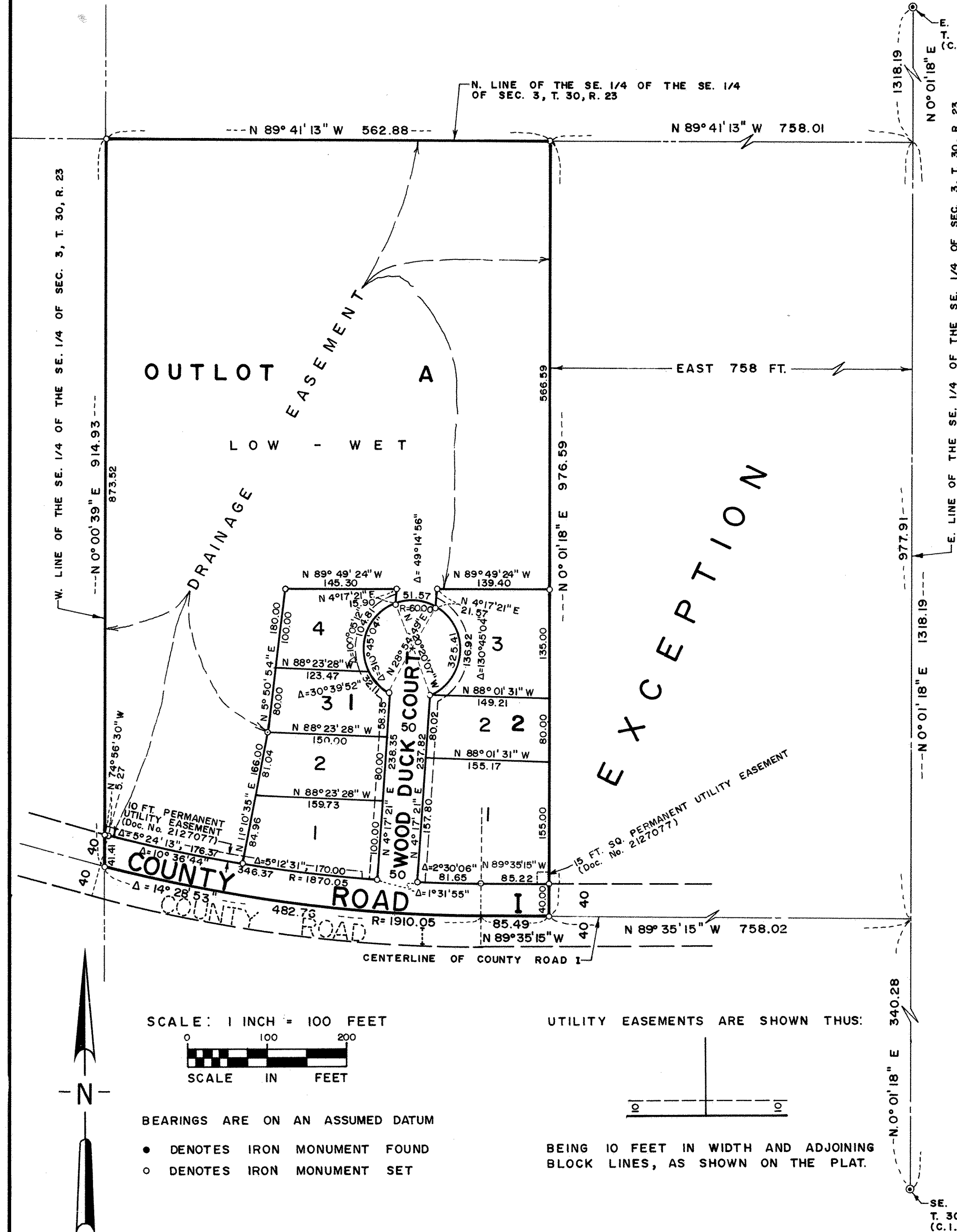


MEADOW POND ADDITION



Know All Persons By These Presents that Clement W. Houle and Ione K. Houle, husband and wife, owners of the following described property situated in the City of Shoreview, Ramsey County, Minnesota:

That part of the Southeast Quarter of the Southeast Quarter of Section 3, Township 30 North, Range 23 West, Ramsey County, Minnesota lying Northerly of the center line of County Road "I" as recorded in Book 1592 Deeds pages 55 and 56 on file in the office of the Register of Deeds in and for Ramsey County, Minnesota, excepting therefrom the East 758 feet thereof.

Have caused the same to be surveyed, platted and known as MEADOW POND ADDITION and do hereby dedicate to the public for public use forever the road, court and drainage and utility easements as shown on the plat.

Have hereunto set our hands this 7 day of July, 1986.

Signed:
Clement W. Houle Clement W. Houle
Ione K. Houle Ione K. Houle

STATE OF MINNESOTA }
 COUNTY OF Ramsey } ss

The foregoing instrument was acknowledged before me this 7 day of July, 1986, by Clement W. Houle and by Ione K. Houle, husband and wife.

Margaret Breunley
 Notary Public, Ramsey County, Minnesota
 My Commission Expires 7/14/86

I, David E. Torgersen, hereby certify that I have surveyed and platted the property described in the dedication of this plat as MEADOW POND ADDITION; that this plat is a correct representation of said survey; that all distances are correctly shown on the plat; that all monuments have been correctly placed in the ground as shown; that the outside boundary lines are correctly designated on the plat; and there are no wet lands, easements or public highways other than as shown thereon.

David E. Torgersen
 David E. Torgersen, Registered Land Surveyor
 Minnesota Registration No. 17551

STATE OF MINNESOTA }
 COUNTY OF Ramsey } ss

The Surveyor's Certificate was subscribed and sworn to before me, a Notary Public, this 3rd day of July, 1986.

Shirley J. Lundberg
 Notary Public, Ramsey County, Minnesota
 My Commission Expires 4-28-1991

Approved and accepted by the City Council of the City of Shoreview, Minnesota, this 4th day of August, 1986.

Richard A. Wedell Mayor
Lang T. Dickson Clerk

Taxes for the year 1986 on land described herein paid, no delinquent taxes and transfer entered, this 4th day of November, 1986.

Low McKenna Director
 Department of Property Taxation
 By Stephanie Crowley Deputy

Pursuant to Chapter 7, Minnesota Laws of 1976, this plat has been reviewed and approved, this 19th day of November, 1986, and the conditions of Minnesota Statutes, Section 505.03, Subdivision 2, have been fulfilled.

David D. Claypool
 David D. Claypool
 Acting Ramsey County Surveyor

County Recorder, County of Ramsey, State of Minnesota

I hereby certify that this plat of MEADOW POND ADDITION was filed in this office this 24th day of November, 1986, at 9:09 o'clock A.M. and was filed in Book 100 of Plats, Page 21, as Document No. 2346411.

John C. McLaughlin, County Recorder

By _____ Deputy

