

# ROUND LAKE ESTATES 2ND ADDITION

Know All Persons By These Presents that North Suburban Company, a partnership consisting of Richard J. Schreier and Patricia A. Schreier, fee owner, of the following described property situated in the City of Little Canada, Ramsey County, Minnesota:

Outlot A, Round Lake Estates, according to the plat on file in the Office of the Registrar of Titles, Ramsey County, Minnesota.

Has caused the same to be surveyed, platted and known as ROUND LAKE ESTATES 2ND ADDITION and does hereby dedicate to the public for public use forever the street and utility and drainage easements as shown on the plat.

North Suburban Company, a partnership consisting of Richard J. Schreier, Partner, and Patricia A. Schreier, Partner, has caused these presents to be signed by its partners this 20 day of December, 1984

Signed: North Suburban Company

Richard J. Schreier  
Richard J. Schreier, Partner

Patricia A. Schreier  
Patricia A. Schreier, Partner

STATE OF MINNESOTA)  
COUNTY OF RAMSEY )

The foregoing instrument was acknowledged before me this 20 day of December, 1984, by Richard J. Schreier, Partner, and by Patricia A. Schreier, Partner, of North Suburban Company, a partnership, on behalf of the partnership.

Annette Freeman  
Notary Public, Ramsey County, Minnesota  
My Commission Expires 12-4-88



I, D. Edward Ames, hereby certify that I have surveyed and platted the property described in the dedication of this plat as ROUND LAKE ESTATES 2ND ADDITION; that this plat is a correct representation of said survey; that all distances are correctly shown on the plat; that all monuments have been correctly placed in the ground as shown; that the outside boundary lines are correctly designated on the plat; and there are no wetlands, easements or public highways other than as shown thereon.

D. Edward Ames  
D. Edward Ames, Land Surveyor  
Minnesota Registration No. 11394

STATE OF MINNESOTA)  
COUNTY OF RAMSEY )

The Surveyor's Certificate was subscribed and sworn to before me, a Notary Public, this 19th day of December, 1984.



Daniel R. McGibbon  
Daniel R. McGibbon  
Notary Public, Ramsey County, Minnesota  
My Commission Expires January 30, 1990

Approved and accepted by the City Council of the City of Little Canada, Minnesota, this 21 day of December, 1984.

Raymond Stevenson  
Mayor

Joseph Chubb  
Clerk

Taxes for the year 1984 on land described herein paid, no delinquent taxes and transfer entered, this 27th day of December, 1984.

Joe McKenna Director  
Department of Property Taxation

By Donna Keene Deputy

Pursuant to Chapter 7, Minnesota Laws of 1976, this plat has been reviewed and approved, this 27th day of December, 1984, and the conditions of Minnesota Statutes, Section 505.03, Subdivision 2, have been fulfilled.

David D. Claypool  
David D. Claypool  
Acting Ramsey County Surveyor

Registrar of Titles, County of Ramsey, State of Minnesota

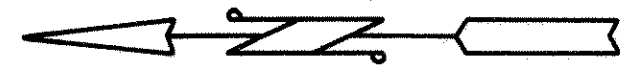
I hereby certify that this plat of ROUND LAKE ESTATES 2ND ADDITION was filed in this office this 27th day of DECEMBER, 1984, at 3:10 o'clock P.M. and was filed in Book 34 of Plats, Pages 43 and 44, as Document No. 770608.

Eugene H. Gibbons, Registrar of Titles

By \_\_\_\_\_ Deputy

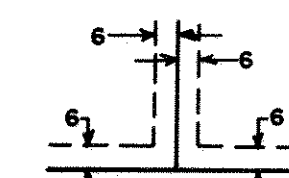
# ROUND LAKE ESTATES 2ND ADDITION

SOUTH 1/4 CORNER OF SEC. 6, T.29, R. 23 (RAMSEY CO. CAST IRON MONUMENT)



SCALE: 1 INCH = 50 FEET

Drainage and Utility Easements are shown thus:



Being 6 feet in width and adjoining lot lines, unless otherwise indicated on the plat.

EXISTING WATER ELEVATION IS 902.5 FEET ON DEC. 13, 1983  
HIGHEST KNOWN WATER ELEVATION 903.4 FEET

BENCH MARK: Brass disk (painted over) in southeast corner of R.R. bridge over County Road "C".  
Elevation 928.47 Feet  
N.G.V.D. 1929

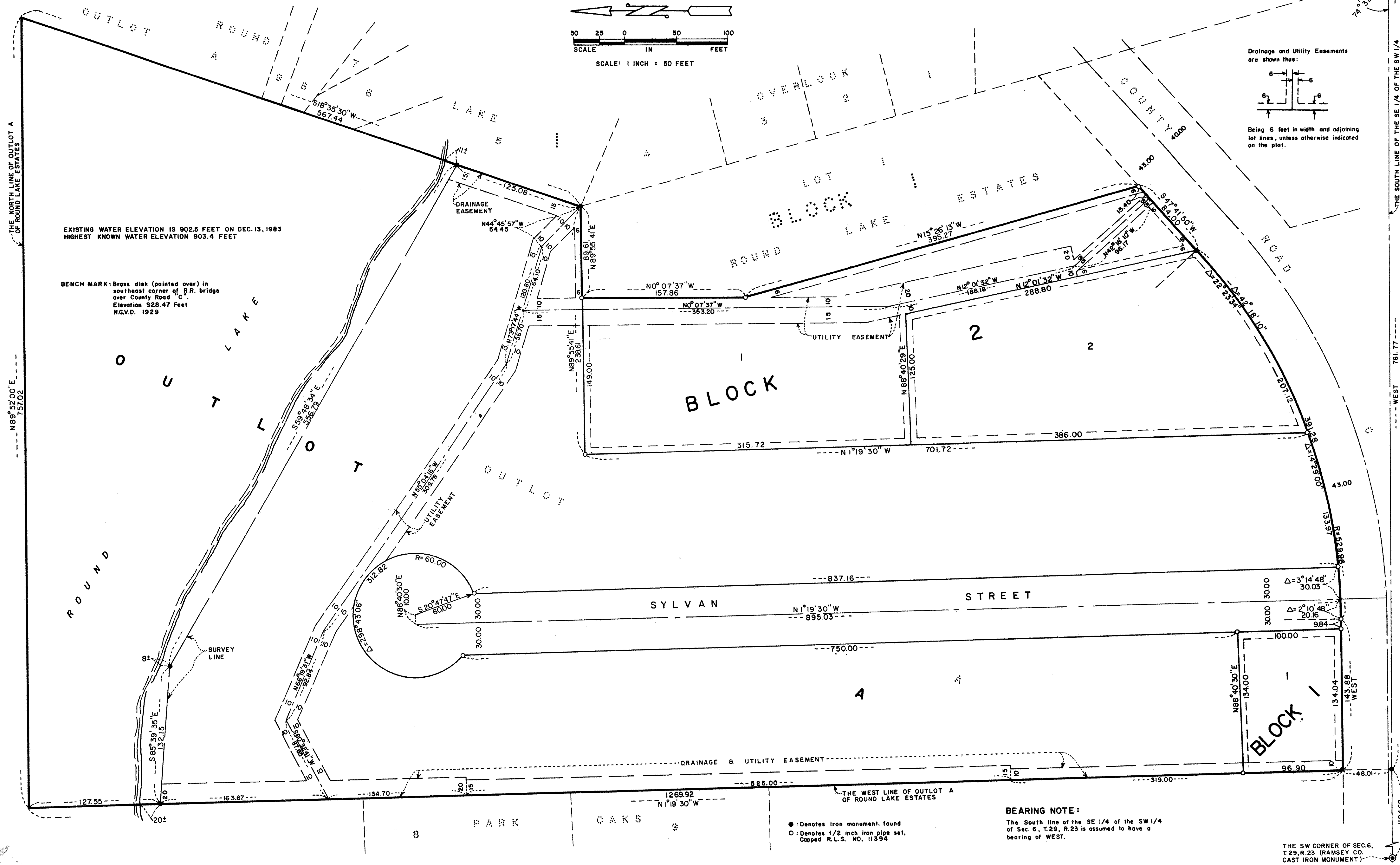
THE NORTH LINE OF OUTLOT A OF ROUND LAKE ESTATES

N89°52'00"E 757.02

THE SOUTH LINE OF THE SE 1/4 OF THE SW 1/4 OF SEC. 6, T.29, R. 23

WEST 761.77

WEST 1104.60



● Denotes iron monument found  
○ Denotes 1/2 inch iron pipe set, Capped R.L.S. NO. 11394

**BEARING NOTE:**  
The South line of the SE 1/4 of the SW 1/4 of Sec. 6, T.29, R.23 is assumed to have a bearing of WEST.

THE SW CORNER OF SEC. 6, T.29, R. 23 (RAMSEY CO. CAST IRON MONUMENT)