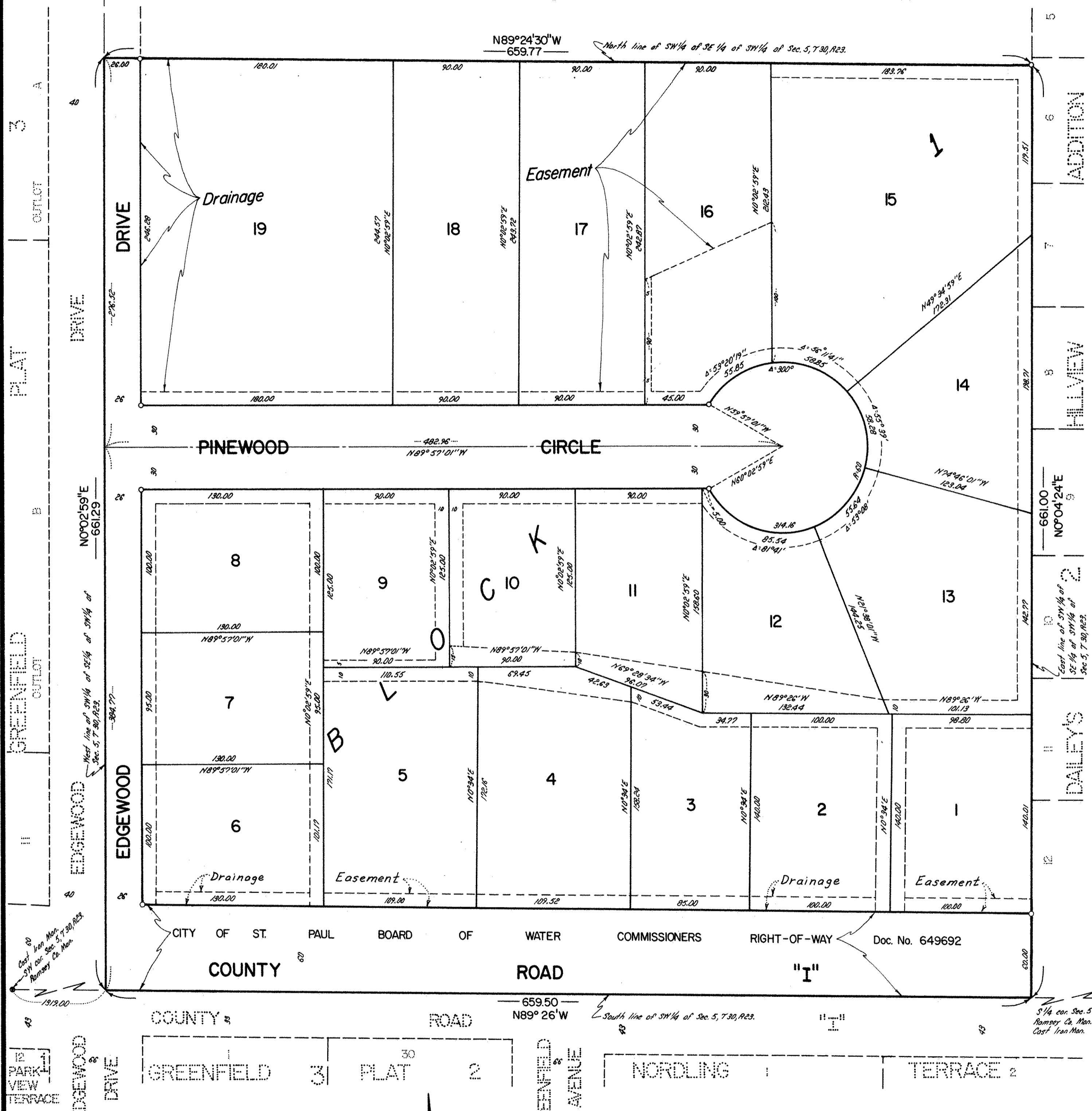


EDGEWOOD SQUARE



Know All Persons By These Presents that Marceille Z. Haselius, widow and unmarried, owner and Eigenheer Enterprises Inc., a Minnesota corporation, contract purchaser, of the following described property situated in the City of Mounds View, Ramsey County, Minnesota:

The Southwest quarter of the Southeast quarter of the Southwest quarter of Section 5, Township 30, Range 23, Ramsey County, Minnesota.

Have caused the same to be surveyed, platted and known as EDGEWOOD SQUARE and do hereby dedicate to the public for the public use forever the drainage and utility easements, drive, circle, and the road as shown on the plat.

Marceille Z. Haselius, widow and unmarried, has hereunto set her hand this 15th day of April, 1983.

SIGNED: Marceille Z. Haselius
Marceille Z. Haselius

In witness whereof said Eigenheer Enterprises Inc., a Minnesota corporation, has caused these presents to be signed by its proper officer and its corporate seal to be hereunto affixed this 5th day of February, 1982.

SIGNED: Robert W. Eigenheer its President
Eigenheer Enterprises, Inc.

State of Minnesota)
County of Anoka)
The foregoing instrument was acknowledged before me this 15th day of April, 1983, by Marceille Z. Haselius, widow and unmarried.

LOIS H. CASWELL
NOTARY PUBLIC - MINNESOTA
HELVING PIN COUNTY
My Commission Expires Oct. 16, 1988
Notary Public, Hennepin County, Minnesota

State of Minnesota)
County of Anoka)
The foregoing instrument was acknowledged before me this 5th day of February, 1982, by Robert Eigenheer, President of Eigenheer Enterprises, Inc. a Minnesota corporation, on behalf of the corporation.

MARIAN E. RUD
ANOKA COUNTY
NOTARY PUBLIC - MINNESOTA
MY COMMISSION EXPIRES MAY 23, 1984
Notary Public, Anoka County, Minnesota
My Commission Expires May 23, 1984

I, Ernest G. Rud, hereby certify that I have surveyed and platted the property described in the dedication of this plat as EDGEWOOD SQUARE; that this plat is a correct representation of said survey; that all distances are correctly shown on the plat; that all monuments have been correctly placed in the ground as shown; that the outside boundary lines are correctly designated on the plat; and there are no wet lands or public highways other than as shown thereon.

Ernest G. Rud
Ernest G. Rud, Land Surveyor
Minnesota Registration No. 9808

State of Minnesota)
County of Anoka)
The Surveyor's Certificate was subscribed and sworn to before me, a Notary Public, this 29th day of December, 1981.

MARIAN E. RUD
ANOKA COUNTY
NOTARY PUBLIC - MINNESOTA
MY COMMISSION EXPIRES MAY 23, 1984
Notary Public, Anoka County, Minnesota
My Commission Expires May 23, 1984

Approved and accepted by the City Council of the City of Mounds View, Minnesota, this 12th day of APRIL, 1982.

Duane W. McCarty
Mayor
Donald A. Pauly
Clerk

No delinquent taxes and transfer entered, this 8th day of June, 1983.
Low McKenna Director By R. J. Sgl Deputy
Department of Property Taxation

Pursuant to Chapter 7, Minnesota Laws of 1976, this plat has been reviewed and approved this 9th day of June, 1983 and the conditions of Minnesota Statutes 505.03, Subdivision 2, have been fulfilled.

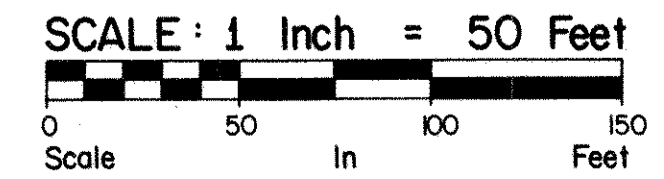
F. R. Kvidera
F. R. Kvidera
Acting Ramsey County Surveyor

Registrar of Titles
County of Ramsey, State of Minnesota

I hereby certify that this plat of EDGEWOOD SQUARE was filed in this office this 17th day of JUNE, 1983, at 9:20 o'clock A.M., and was filed in Book 33 of Plats, Page 43, as Document No. 738877.

Eugene H. Gibbons, Registrar of Titles
By _____ Deputy

• Denotes Found Monument.
○ Denotes Iron Monument Set.
Bearings Are On An Assumed Datum.



Drainage and Utility Easements are shown thus:
Being 10 feet in width and adjoining lot lines, unless otherwise indicated.

E.G. RUD & SONS, INC.
LAND SURVEYORS