

ORR SCHELEN MAYERON AND ASSOCIATES, INC. LAND SURVEYORS & CONSULTING ENGINEERS

CAVES CENTURY 2ND ADDITION

Know All Persons By These Presents that Ed Cave & Sons, Inc., a Minnesota Corporation, fee owner; and Northwestern National Bank South, a United States Corporation, mortgagee, of the following described property situated in the City of Maplewood, Ramsey County, Minnesota:

The West 311.70 feet of the East 731.70 feet of that part of the Southeast Quarter of the Southeast Quarter of Section 24, Township 29 North, Range 22 West of the 4th Principal Meridian lying northerly of the following described line:

Commencing at a point on the north line of said Southeast Quarter of the Southeast Quarter distant 731.83 feet westerly of the northeast corner thereof; thence South, assumed bearing, along the west line of the East 731.70 feet of said Southeast Quarter of the Southeast Quarter 455.00 feet to the point of beginning of the line to be described; thence North 88 degrees 55 minutes 48 seconds East, parallel with the north line of said Southeast Quarter of the Southeast Quarter 123.52 feet; thence North 83 degrees 50 minutes 09 seconds East 60.34 feet; thence North 88 degrees 55 minutes 48 seconds East 128.22 feet to the east line of the West 311.70 feet of the East 731.70 feet of said Southeast Quarter of the Southeast Quarter and said line there terminating.

Have caused the same to be surveyed, platted and known as CAVES CENTURY 2ND ADDITION and do hereby dedicate to the public for public use forever the street, avenue and utility and drainage easements as shown on the plat.

Ed Cave & Sons, Inc., a Minnesota Corporation, has caused these presents to be signed by its proper officers this 4th day of March, 1983.

Signed: Ed Cave & Sons, Inc.

Samuel S. Cave
Samuel S. Cave, President

Diane C. Cave
Diane C. Cave, Secretary

Northwestern National Bank South, A United States Corporation, has caused these presents to be signed by its proper officers and its corporate seal to be hereunto affixed this 4th day of March, 1983.

Signed: Northwestern National Bank South

Paul Kraemer
Its Asst. Vice President

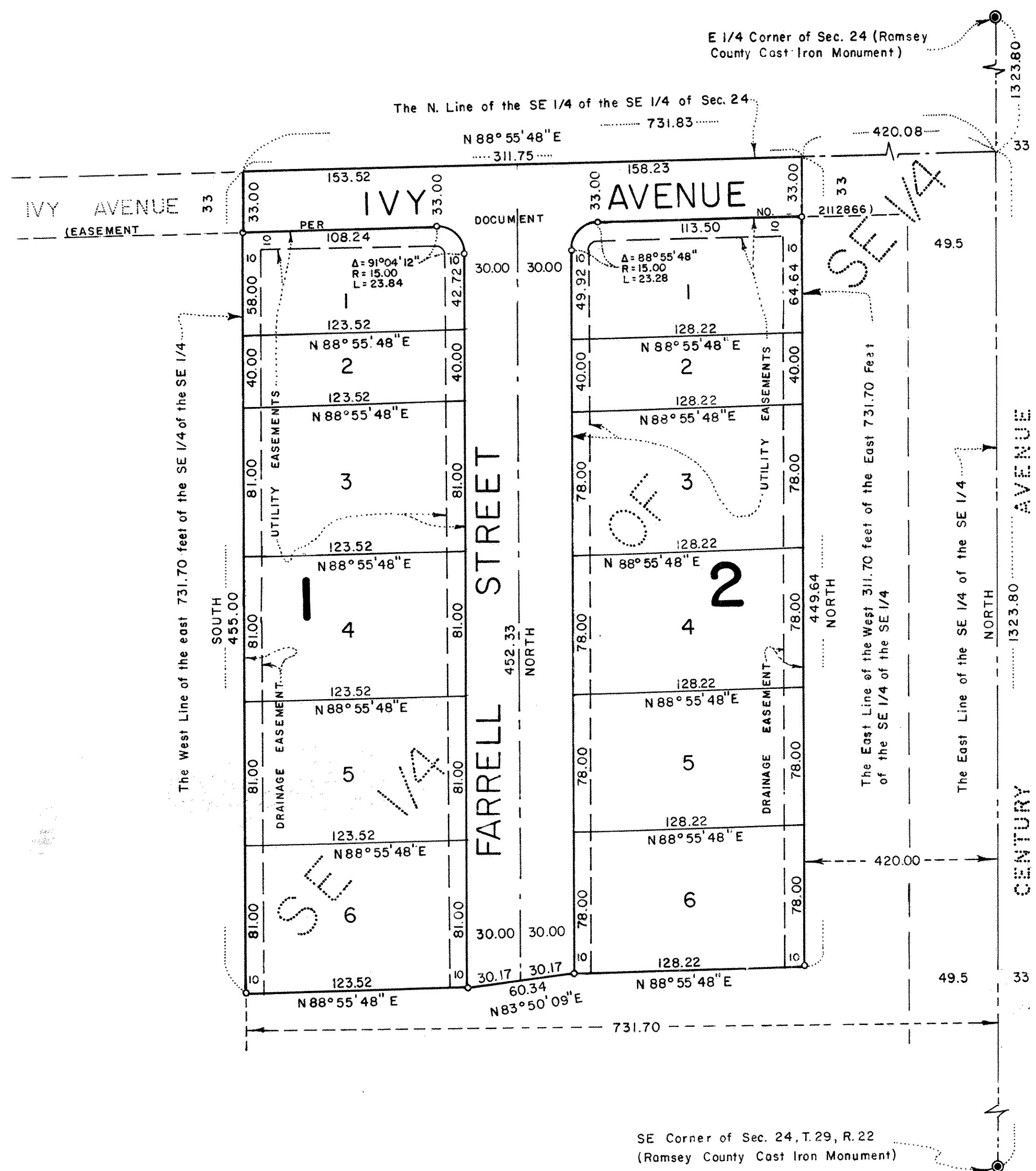
William E. Runk
Its Senior Vice President



SCALE: 1 INCH = 50 FEET

○: Denotes 1/2" Iron Pipe Set, Capped R.L.S. No. 11394.

Bearings Shown are on an Assumed Datum



I, D. Edward Ames, hereby certify that I have surveyed and platted the property described in the dedication of this plat as CAVES CENTURY 2ND ADDITION; that this plat is a correct representation of said survey; that all distances are correctly shown on the plat; that all monuments have been correctly placed in the ground as shown; that the outside boundary lines are correctly designated on the plat; and there are no wetlands, easements or public highways other than as shown thereon.

D. Edward Ames
D. Edward Ames, Land Surveyor
Minnesota Registration No. 11394

STATE OF MINNESOTA)
COUNTY OF HENNEPIN)

The Surveyor's Certificate was subscribed and sworn to before me, a Notary Public, this 5th day of JANUARY, 1983.

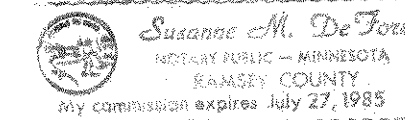
David P. Asplund
David P. Asplund
Notary Public, Hennepin County, Minnesota
My Commission Expires: April 4, 1983



STATE OF MINNESOTA)
COUNTY OF RAMSEY)

The foregoing instrument was acknowledged before me this 4th day of March, 1983, by Samuel S. Cave, President, and by Diane C. Cave, Secretary, of Ed Cave & Sons, Inc., a Minnesota Corporation, on behalf of the corporation.

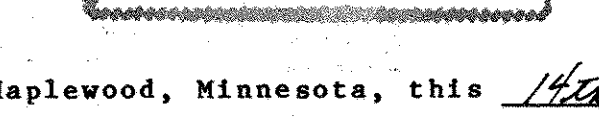
Susanne M. De Jure
Notary Public, Ramsey County, Minnesota
My Commission Expires: 7-27-85



STATE OF MINNESOTA)
COUNTY OF HENNEPIN)

The foregoing instrument was acknowledged before me this 4th day of March, 1983, by Paul Kraemer, Asst. Vice President and by William E. Runk, Senior Vice President of Northwestern National Bank South, a United States Corporation, on behalf of the Corporation.

Richard J. De Jure
Notary Public, Hennepin County, Minnesota
My Commission Expires: 7-27-85



Approved and accepted by the City Council of the City of Maplewood, Minnesota, this 14th day of February, 1983.

John Johnson Mayor
Lucille E. Ruskis Clerk

No delinquent taxes and transfer entered, this 7 day of March, 1983.

By Paul D. Kenna Director
Department of Property Taxation

By Barbara J. Coonick Deputy

Pursuant to Chapter 7, Minnesota Laws of 1976, this plat has been reviewed and approved, this 7th day of March, 1983, and the conditions of Minnesota Statutes, Section 505.03, Subdivision 2, have been fulfilled.

F. R. Kvidera
F. R. Kvidera
Acting Ramsey County Surveyor

County Recorder, County of Ramsey, State of Minnesota

I hereby certify that this plat of CAVES CENTURY 2ND ADDITION was filed in this office this 7th day of MARCH, 1983, at 2:20 o'clock P.M. and was filed in Book 95 of Plats, Page 28, as Document No. 2171092.

Eugene H. Gibbons, County Recorder

By _____ Deputy