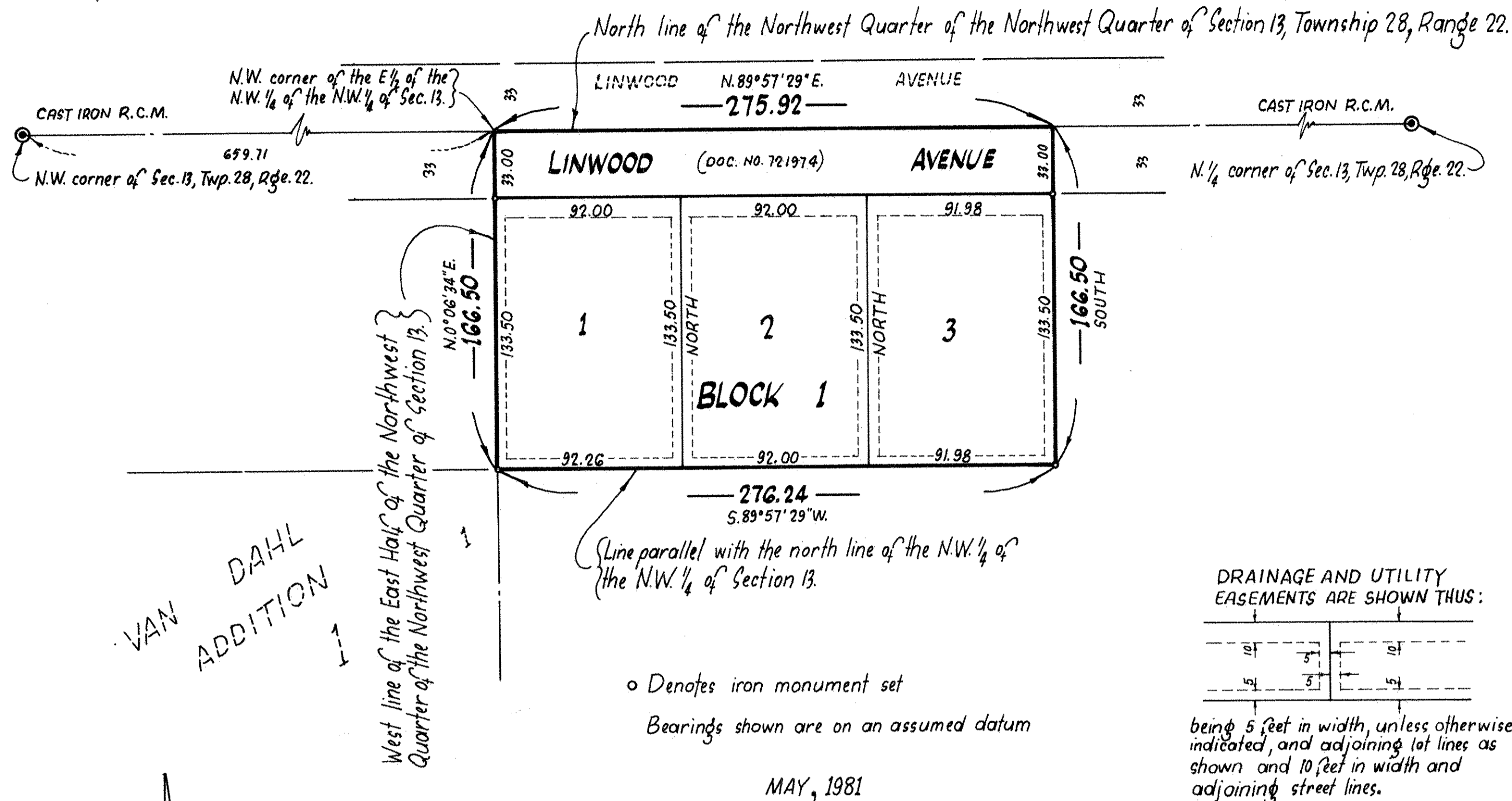


SCHWICHTENBERG ADDITION



o Denotes iron monument set
Bearings shown are on an assumed datum

MAY, 1981

KNOW ALL PERSONS BY THESE PRESENTS that Schwichtenberg Properties, a partnership consisting of Ralph L. Schwichtenberg and Joyce G. Schwichtenberg owners and Kurt G. Schwichtenberg and Margaret Schwichtenberg, his wife, contract purchasers, and Mary Kolby Webber, formerly Mary E. Kolby and Roland Webber, her husband, mortgagee of the following described property situated in the City of Maplewood, Ramsey County, Minnesota to wit:

That part of the East Half of the Northwest Quarter of the Northwest Quarter of Section 13, Township 28, Range 22, Ramsey County, Minnesota described as beginning at the northwest corner of said East Half of the Northwest Quarter of the Northwest Quarter; thence on an assumed bearing of N 89° 57' 29" E, along the north line of said East Half of the Northwest Quarter of the Northwest Quarter, 275.92 feet; thence on a bearing of South, a distance of 166.5 feet; thence S 89° 57' 29" W, parallel with said north line, a distance of 276.24 feet to its intersection with the west line of said East Half of the Northwest Quarter of the Northwest Quarter; thence N 0° 06' 34" E, along said west line, 166.50 feet to the point of beginning.

Have caused the same to be surveyed, platted and known as SCHWICHTENBERG ADDITION and do hereby dedicate to the public for public use forever the avenue and drainage and utility easements as shown on the plat. In witness whereof said Schwichtenberg Properties has caused these presents to be signed by Ralph L. Schwichtenberg and Joyce G. Schwichtenberg, partners, this 20th day of September, 1982. In witness whereof said Kurt G. Schwichtenberg and Margaret Schwichtenberg, his wife have hereunto set their hands this 18th day of January, 1983. In witness whereof said Mary Kolby Webber, formerly Mary E. Kolby and Roland Webber, her husband, have hereunto set their hands this 21st day of September, 1982.

SCHWICHTENBERG PROPERTIES, a partnership
Ralph L. Schwichtenberg
 Ralph L. Schwichtenberg, partner
Joyce G. Schwichtenberg
 Joyce G. Schwichtenberg, partner
Kurt G. Schwichtenberg
 Kurt G. Schwichtenberg
Mary Kolby Webber
 Mary Kolby Webber
Margaret Schwichtenberg
 Margaret Schwichtenberg
Roland Webber
 Roland Webber

UBURBAN ENGINEERING, INC.
 —Engineers—
 —Surveyors—

STATE OF MINNESOTA)
 COUNTY OF Ramsey)

The foregoing instrument was acknowledged before me this 20th day of September, 1982 by Ralph L. Schwichtenberg, partner and Joyce G. Schwichtenberg, partner of Schwichtenberg Properties, a partnership on behalf of said partnership.

MARGARET E. MCQUILLAN
 NOTARY PUBLIC - MINNESOTA
 RAMSEY COUNTY
 My Commission Expires Jan 3 1985

Margaret E. McQuillan
 Notary Public, Ramsey County, Minnesota
 My Commission Expires January 3, 1985

STATE OF MINNESOTA)
 COUNTY OF Ramsey)

The foregoing instrument was acknowledged before me this 18th day of January, 1983 by Kurt G. Schwichtenberg, and Margaret Schwichtenberg, his wife.

DAVID S. ANDERSON
 NOTARY PUBLIC - MINNESOTA
 RAMSEY COUNTY
 My Commission Expires June 2, 1987

David S. Anderson
 Notary Public, Ramsey County, Minnesota
 My Commission Expires June 3, 1987

STATE OF MINNESOTA)
 COUNTY OF Ramsey)

The foregoing instrument was acknowledged before me this 21st day of September, 1982 by Mary Kolby Webber, and Roland Webber, her husband, formerly Mary E. Kolby.

MARGARET E. MCQUILLAN
 NOTARY PUBLIC - MINNESOTA
 RAMSEY COUNTY
 My Commission Expires Jan 3 1985

Margaret E. McQuillan
 Notary Public, Ramsey County, Minnesota
 My Commission Expires January 3, 1985

I, Howard W. Rogers, hereby certify that I have surveyed and platted the property described in the dedication of this plat as SCHWICHTENBERG ADDITION; that this plat is a correct representation of said survey; that all distances are correctly shown on the plat; that all monuments have been correctly placed in the ground as shown; that the outside boundary lines are correctly designated on the plat; and there are no wet lands, easements or public highways other than as shown thereon.

Howard W. Rogers
 Howard W. Rogers, Land Surveyor
 Minnesota Registration No. 10945

STATE OF MINNESOTA)
 COUNTY OF ANOKA)

The Surveyor's Certificate was subscribed and sworn to before me, a Notary Public, this 15th day of July, 1981.

MARIETTA L. ZUEHLKE
 NOTARY PUBLIC - MINNESOTA
 ANOKA COUNTY
 My Commission Expires APR. 14, 1984

Marietta L. Zuehlke
 Notary Public, Anoka County, Minnesota
 My Commission Expires April 14, 1984

Approved and accepted by the City Council of the City of Maplewood, Minnesota, this 9th day of August, 1982.

John Shearer Mayor
Quill E. Quillan Clerk

No delinquent taxes and transfer entered, this 19th day of JANUARY, 1983.
Don McKeena Director
 Department of Property Taxation
Robert Bremer Deputy

Pursuant to Chapter 7, Minnesota Laws of 1976, this plat has been reviewed and approved, this 21st day of January, 1983 and the conditions of Minnesota Statutes, Section 505.03, Subdivision 2, have been fulfilled.

F. R. Kvidera
 F. R. Kvidera
 Acting Ramsey County Surveyor

COUNTY RECORDER, COUNTY OF RAMSEY, STATE OF MINNESOTA

I hereby certify that this plat of SCHWICHTENBERG ADDITION was filed in this office this 21st day of January, 1983, at 9:30 o'clock A.M. and was filed in Book 95 of Plats, Page 23, as Document Number 2167053.

Eugene H. Gibbons, County Recorder By _____ Deputy