

BREWSTER

TOWNHOUSES

Know All Persons By These Presents that Knudsen Realty Co., a Minnesota Corporation owner and St. Anthony Park State Bank, a Minnesota Corporation, mortgage holder, of the following described property situated in the City of St. Paul, Ramsey County, Minnesota:

Lots 12, 13, 14, 15 and 16, Block 15, St. Anthony Park, Minn.

Have caused the same to be surveyed, platted and known as BREWSTER TOWNHOUSES and do here dedicate to the public for public use forever the street as shown on the plat.

Knudsen Realty Co., a Minnesota Corporation, has caused these presents to be signed by its proper officers and its corporate seal to be hereunto affixed this 21 day of NOVEMBER, 1979.

Signed: Knudsen Realty Co., a Minnesota Corporation

Charles B. Knudsen, its PRESIDENT
Name Title
Charles B. Knudsen, its SECRETARY
Name Title

St. Anthony Park State Bank, a Minnesota Corporation, has caused these presents to be signed by its proper officers and its corporate seal to be hereunto affixed this 21ST day of NOVEMBER, 1979.

Signed: St. Anthony Park State Bank, a Minnesota Corporation

George D. Howes, its VICE PRESIDENT
Name Title
Glen D. Bosch, its ASSISTANT VICE PRESIDENT
Name Title

State of Minnesota)
County of RAMSEY

The foregoing instrument was acknowledged before me this 21 day of NOVEMBER, 1979, by CHARLES B. KNUDSEN, its PRESIDENT, and by CHARLES B. KNUDSEN, its SECRETARY, of Knudsen Realty Co., a Minnesota Corporation, on behalf of the corporation.

Raymond J. Sauman
Notary Public, Ramsey County, Minnesota
My Commission Expires May 7, 1981

State of Minnesota)
County of RAMSEY

The foregoing instrument was acknowledged before me this 21ST day of NOVEMBER, 1979, by GEORGE D. HOWES, its VICE PRESIDENT, and by GLEN D. BOSCH, its ASSISTANT VICE PRESIDENT of St. Anthony Park State Bank, a Minnesota Corporation, on behalf of the corporation.

Eugene H. Gibbons
Notary Public, Ramsey County, Minnesota
My Commission Expires 3-22-80

I, Warren I. Forsberg, hereby certify that I have surveyed and platted the property described in the dedication of this plat as BREWSTER TOWNHOUSES; that this plat is a correct representation of said survey; that all distances are correctly shown on the plat; that all monuments have been correctly placed in the ground as shown; that the outside boundary lines are correctly designated on the plat; and there are no wet lands or public highways other than as shown thereon.

Warren I. Forsberg
WARREN I. FORSBERG, Land Surveyor
MINNESOTA REGISTRATION NUMBER 4840

State of Minnesota)
County of RAMSEY

The Surveyor's certificate was subscribed and sworn to before me, a Notary Public, this 21st day of NOVEMBER, 1979.

Warren I. Forsberg
Notary Public, Ramsey County, Minnesota
My Commission Expires 14th Sept, 1984

Approved and accepted by the City Council of the City of St. Paul, Minnesota, this 21 day of NOVEMBER, 1979.

Rose Mifflin
Clerk

Pursuant to Chapter 7, Minnesota Laws of 1976, this plat has been approved this 28TH day of NOVEMBER, 1979.

F. R. Kvidera
F. R. Kvidera
Acting Ramsey County Surveyor

No delinquent taxes and transfer entered this 21st day of November, 1979.

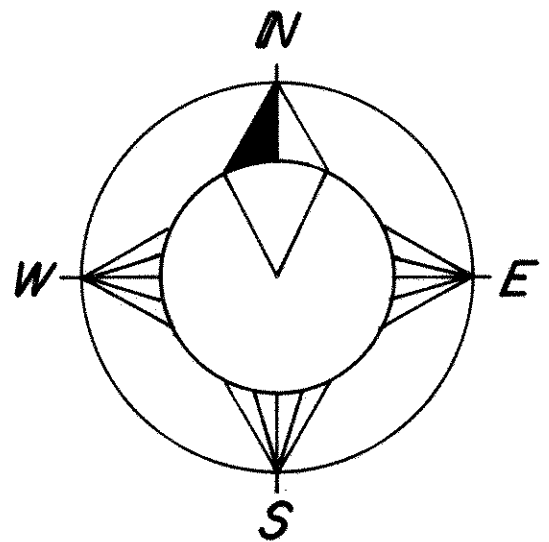
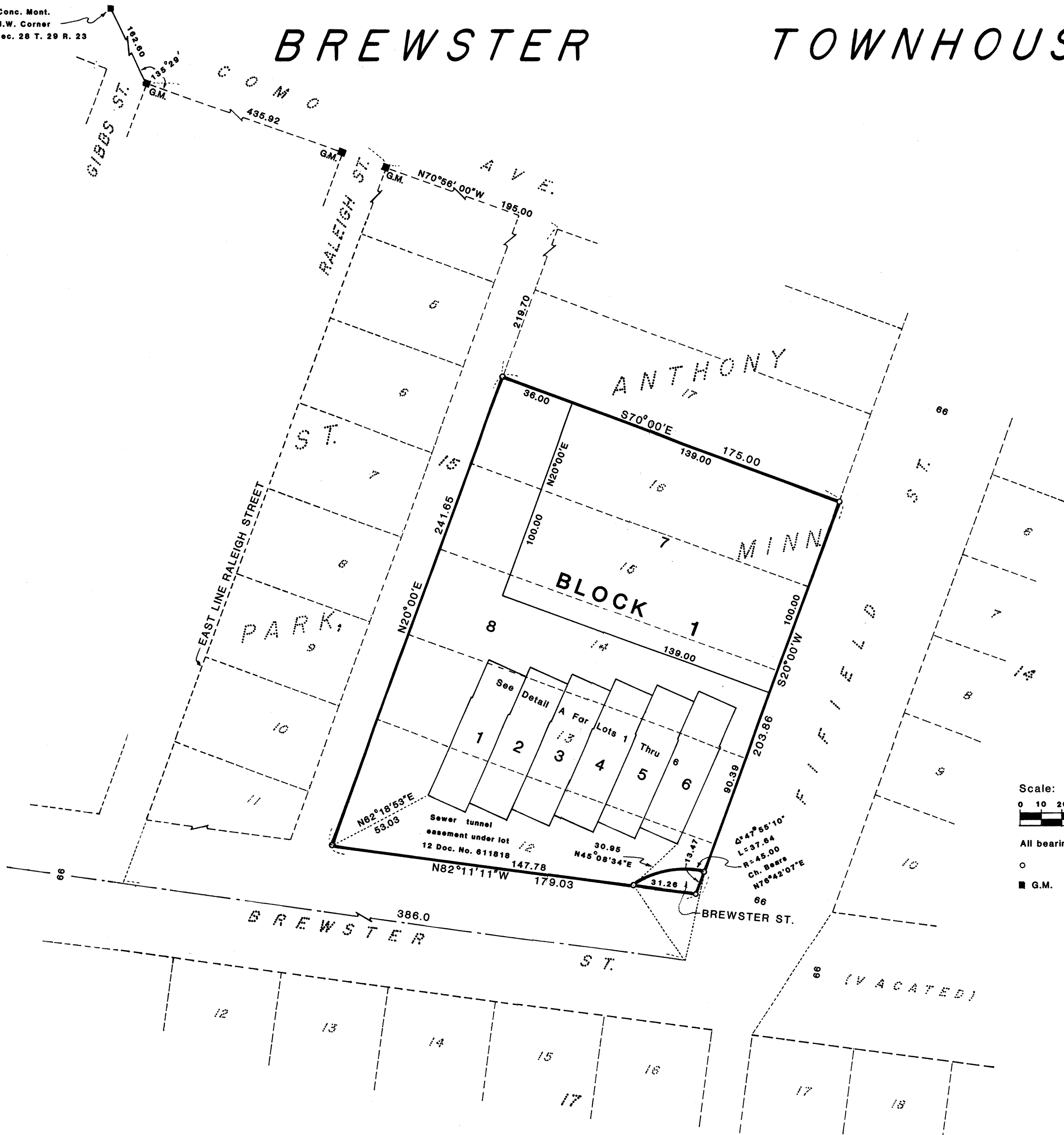
Lowell Kenna Director
Department of Property Taxation
By R. Kenna Deputy

Registrar of Titles, County of Ramsey, State of Minnesota
I hereby certify that this plat of BREWSTER TOWNHOUSES was filed in this office this 28th day of NOVEMBER, 1979 at 2:50 o'clock P..M. and was filed in Book 31 of Plats, Pages 35, 36 and 37, as Document No. 685039.

Eugene H. Gibbons, Registrar of Titles
By _____ Deputy

BREWSTER TOWNHOUSES

Conc. Mont.
N.W. Corner
Sec. 28 T. 29 R. 23



Scale: 1 Inch = 30 Feet
 Scale in Feet
 0 10 20 30 40 50 100 150 200 250

All bearings are on an assumed datum

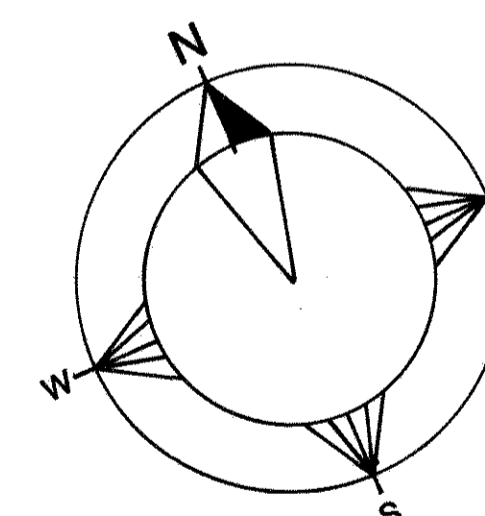
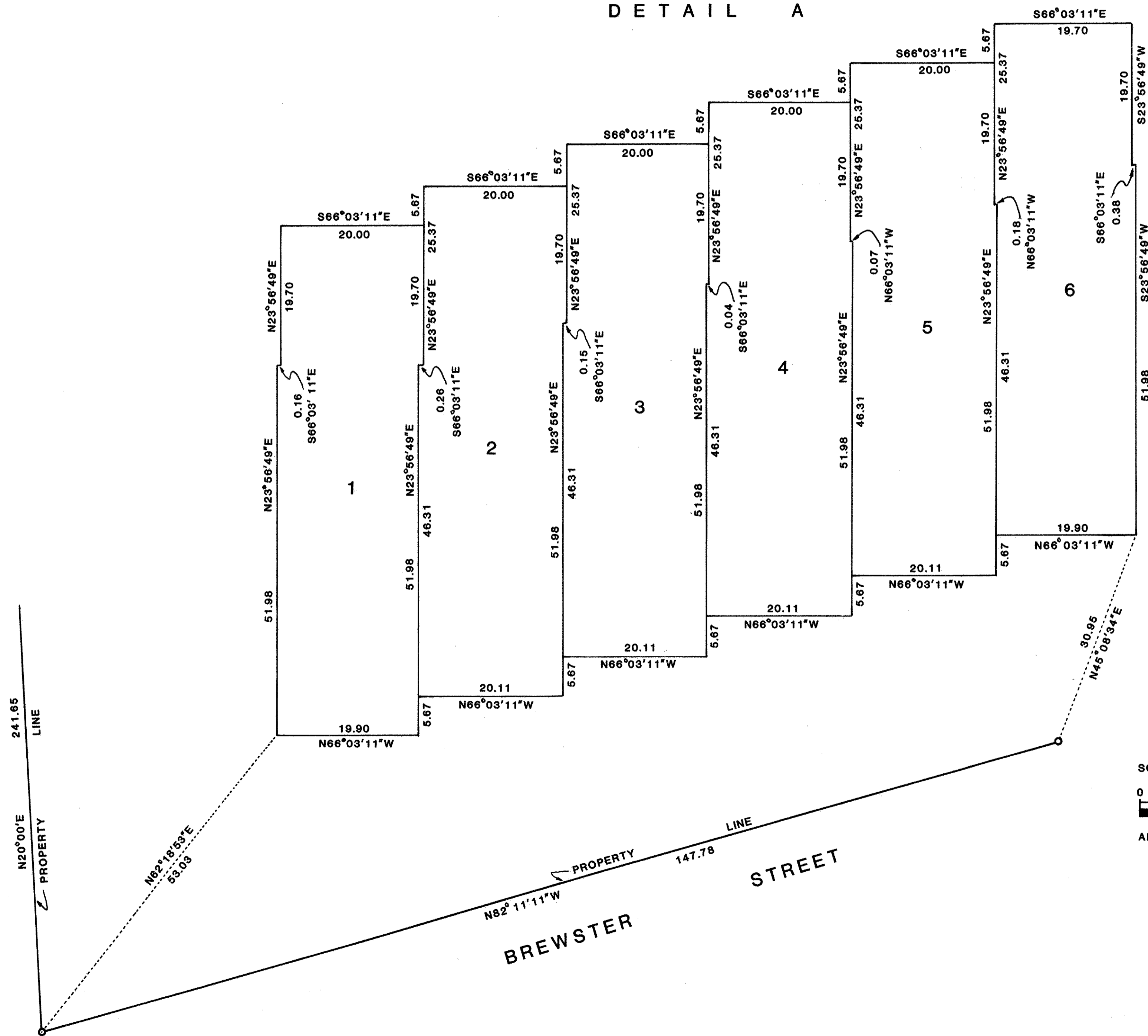
○ Denotes iron pipe set and marked by Reg. No. 4840

■ G.M. Denotes granite monument found

BREWSTER

TOWNHOUSES

DETAIL A



SCALE: 1 INCH = 10 FEET



ALL BEARINGS ARE ON AN ASSUMED DATUM