

VENTURE WOODS ADDITION

KNOW ALL PERSONS BY THESE PRESENTS: That Eugene T. Hughes and JoAnn Hughes, trustees of the Eugene T. Hughes trust U/A dtd. June 6, 1975, owner of the following described property situated in the City of Maplewood, Ramsey County, Minnesota:

The South 1/2 of the Northwest 1/4 of the Southwest 1/4 of the Northwest 1/4 of Section 13, Township 28, Range 22.

Has caused the same to be surveyed, platted and known as VENTURE WOODS ADDITION and do hereby dedicate to the public for public use forever the court, road, walkway and drainage and utility easements as shown on this plat. In witness whereof said Eugene T. Hughes and JoAnn Hughes, trustees of the Eugene T. Hughes trust U/A dtd. June 6, 1975, have hereunto set their hands this 15 day of August, 1978.

SIGNED:
EUGENE T. HUGHES TRUST U/A DTD. JUNE 6, 1975

Eugene T. Hughes JoAnn Hughes
Eugene T. Hughes, Trustee JoAnn Hughes, Trustee

STATE OF MINNESOTA The foregoing instrument was acknowledged before me, a Notary Public, this 15 day of August, 1978 by Eugene T. Hughes and JoAnn Hughes, trustees of the Eugene T. Hughes trust U/A dtd. June 6, 1975.

COUNTY OF RAMSEY

Peter Van Duzarte
Notary Public, Ramsey County, Minnesota
My Commission Expires 8/12/88

I, Howard W. Rogers, hereby certify that I have surveyed and platted the property described in the dedication of this plat as VENTURE WOODS ADDITION; that this plat is a correct representation of said survey; that all distances are correctly shown on the plat; that all monuments have been correctly placed in the ground as shown; that the outside boundary lines are correctly designated on the plat; and there are no wet lands, or public highways other than as shown thereon.

Howard W. Rogers
Howard W. Rogers, Land Surveyor
Minnesota Registration No. 10945

STATE OF MINNESOTA The Surveyor's certificate was subscribed and sworn to before me, a Notary Public, this 20th day of July, 1978.

COUNTY OF ANOKA

Maritta J. Zuehlke
Notary Public, Anoka County, Minnesota
My Commission Expires 1/1/88

Approved and accepted by the City Council of the City of Maplewood, Minnesota, this 4th day of January, 1979.

John C. Stearn Mayor Louis E. Amundson Clerk

No delinquent taxes and transfer entered this 11th day of January, 1979.

Paul McKenna Director By M. Welsch Deputy
Department of Property Taxation

Pursuant to Chapter 7, Minnesota Laws of 1976, this plat has been approved this 12th day of January, 1979.

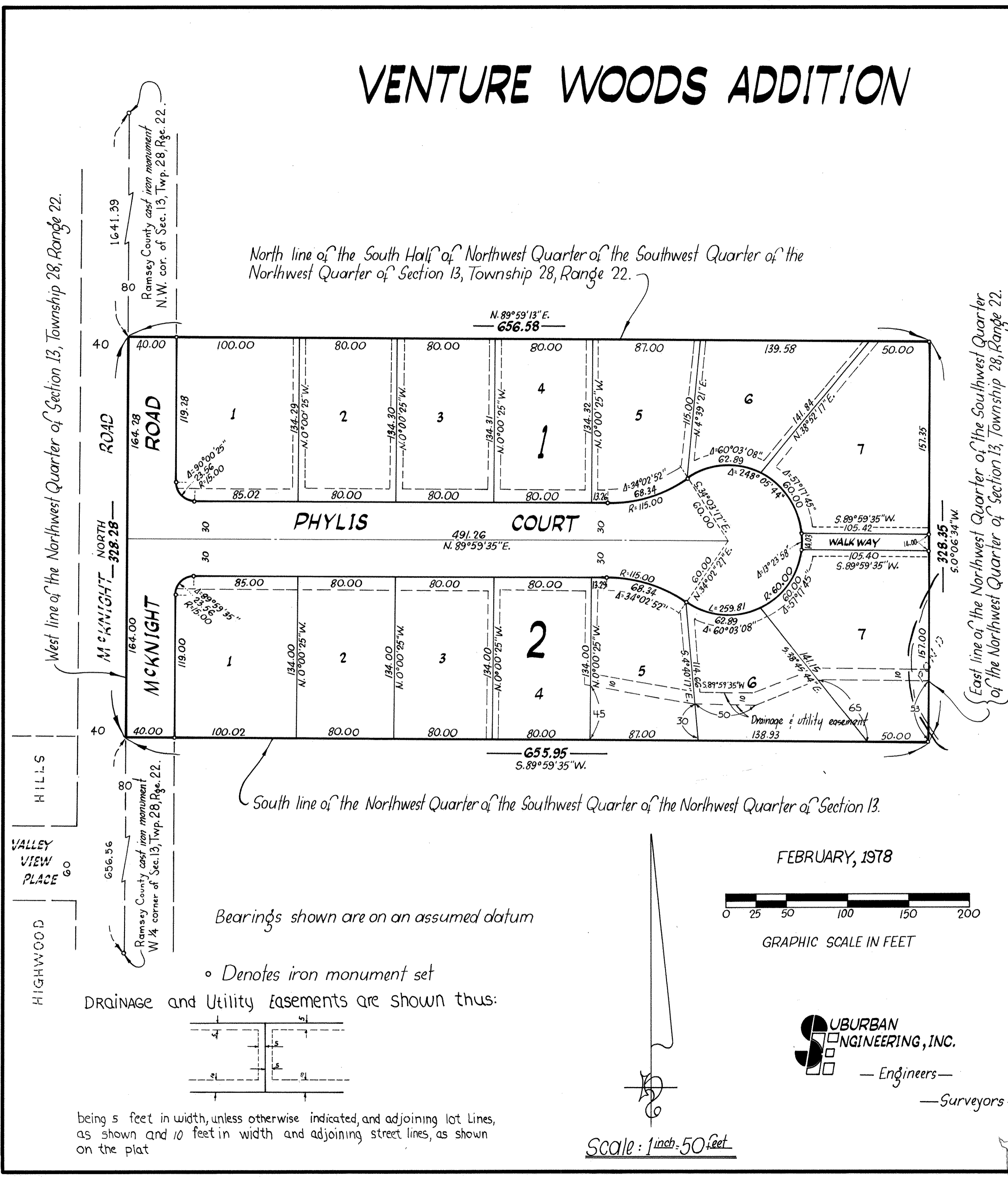
F. R. Kvidera
F. R. Kvidera
Acting Ramsey County Surveyor

COUNTY RECORDER, COUNTY OF RAMSEY, STATE OF MINNESOTA

I hereby certify that this plat of VENTURE WOODS ADDITION was filed in this office this 12th day of January, 1979 at 10 o'clock A.M. and was filed in book 91 of plats, page 18, as Document No. 2030010.

Eugene H. Gibbons, County Recorder

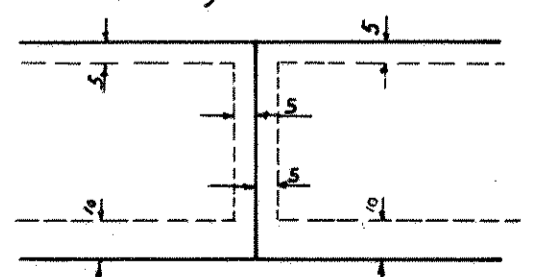
By _____ Deputy



Bearings shown are on an assumed datum

• Denotes iron monument set

Drainage and Utility Easements are shown thus:



being 5 feet in width, unless otherwise indicated, and adjoining lot lines, as shown and 10 feet in width and adjoining street lines, as shown on the plat

Scale: 1 inch = 50 feet

SUBURBAN ENGINEERING, INC.
— Engineers —
— Surveyors —