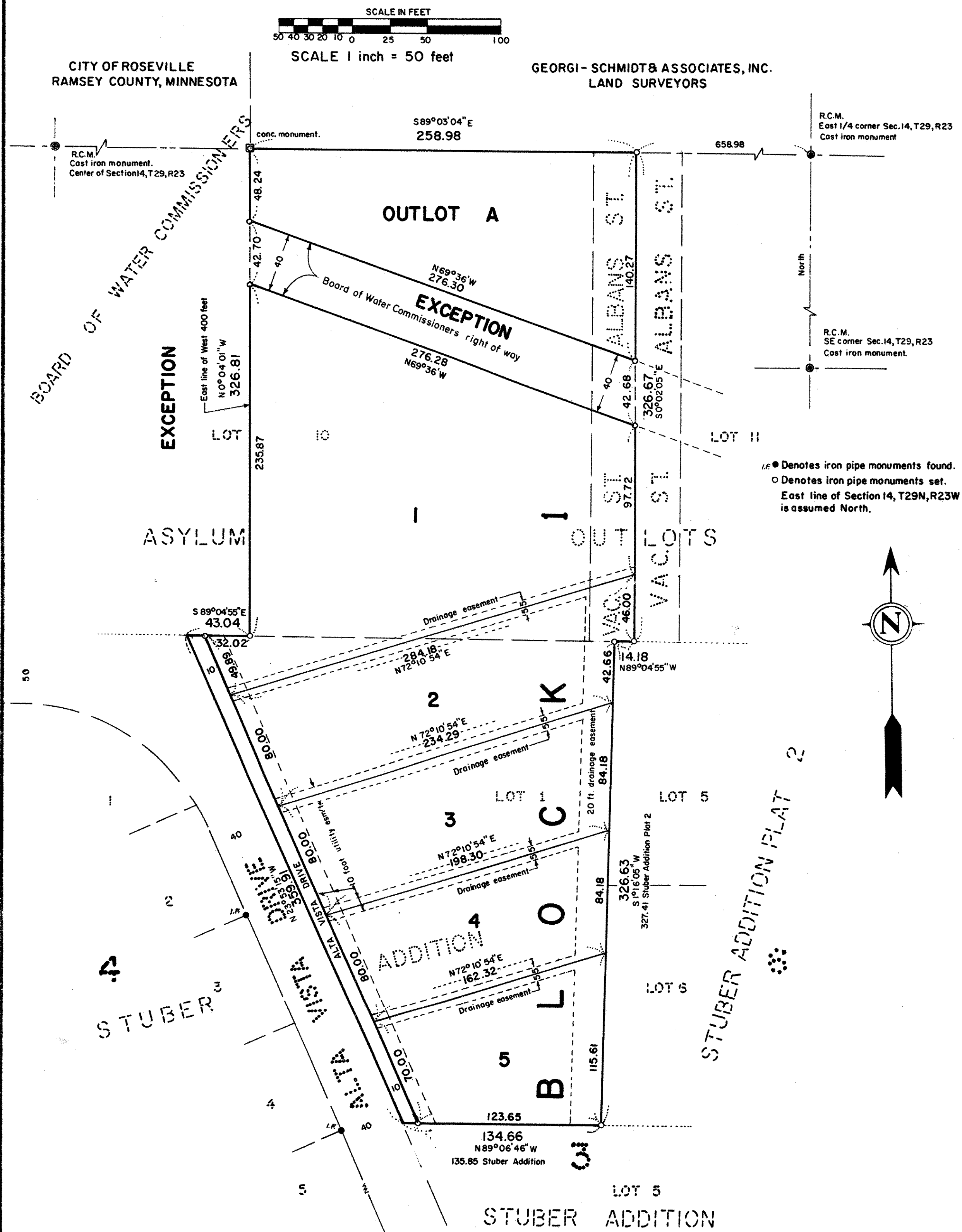


# CONNELLY HEIGHTS



Know All Persons By These Presents that Thomas A. Connelly and Loretta J. Connelly, husband and wife, and William C. Campion and Kathleen M. Campion, husband and wife, owners of the following described property situated in the City of Roseville, Ramsey County, Minnesota:

Lot 1, Block 3, Stuber Addition, and Lot 10, Asylum Outlots, together with the West 1/4 of adjoining vacated St. Albans Street, except the West 400 feet thereof and except 33/100 acres for Board of Water Commissioners right-of-way therefrom.

Have caused the same to be surveyed, platted and known as CONNELLY HEIGHTS and do hereby dedicate to the public for public use forever the drive, drainage and utility easements as shown on the plat.

Have hereunto set our hands this 2 day of March, 1979.

Signed: Thomas A. Connelly Thomas A. Connelly  
Loretta J. Connelly Loretta J. Connelly

Have hereunto set our hands this 4 day of March, 1979.

Signed: William C. Campion William C. Campion  
Kathleen M. Campion Kathleen M. Campion

STATE OF MINNESOTA ) S S  
 COUNTY OF RAMSEY )

The foregoing instrument was acknowledged before me this 2 day of March, 1979 by Thomas A. Connelly and Loretta J. Connelly, husband and wife.

Arthur H. Braumaster, Jr.  
 Notary Public, Ramsey County, Minnesota  
 My Commission Expires February 11, 1984

STATE OF MINNESOTA ) S S  
 COUNTY OF RAMSEY )

The foregoing instrument was acknowledged before me this 4 day of March, 1979 by William C. Campion and Kathleen M. Campion, husband and wife.

Arthur H. Braumaster, Jr.  
 Notary Public, Ramsey County, Minnesota  
 My Commission Expires February 11, 1984

I, Donald W. Schmidt, hereby certify that I have surveyed and platted the property described in the dedication of this plat as CONNELLY HEIGHTS; that this plat is a correct representation of said survey; that all distances are correctly shown on the plat; that all monuments have been correctly placed in the ground as shown; that the outside boundary lines are correctly designated on the plat; and there are no wet lands, or public highways other than as shown thereon.

Donald W. Schmidt  
 Registered Land Surveyor  
 Minnesota Registration No. 10459

STATE OF MINNESOTA ) S S  
 COUNTY OF RAMSEY )

The Surveyor's certificate was subscribed and sworn to before me, a Notary Public this 8th day of February, 1979.

C. M. Christea  
 Notary Public, Ramsey County, Minnesota  
 My Commission Expires

Approved and accepted by the City Council of the City of Roseville, Minnesota this 12 day of February, 1979.

James Stensrud Mayor  
James Stensrud Clerk

No delinquent taxes and transfer entered this 6th day of March, 1979.

Lawrence Keenan Director By P. H. Harty Deputy  
 Department of Property Taxation

Pursuant to Chapter 7, Minnesota Laws of 1976 this plat has been approved this 15th day of March, 1979.

F. R. Kvidera  
 Acting Ramsey County Surveyor

County Recorder, County of Ramsey, State of Minnesota

I hereby certify that this plat of CONNELLY HEIGHTS was filed in this office this 16th day of MARCH, 1979, at 9:15 o'clock A.M. and was filed in Book 91 of Plats, Page 24, as Document No. 2035384.

Eugene H. Gibbons, County Recorder  
 By \_\_\_\_\_ Deputy