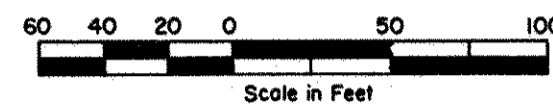


# WILLOW COURT

CITY OF WHITE BEAR LAKE  
RAMSEY COUNTY, MINNESOTA

SCALE: 1 inch = 60 feet



GEORGI-SCHMIDT & ASSOCIATES, INC.  
LAND SURVEYORS



o Denotes Iron Pipe Monument set.

All distances are to hundredths of a foot;  
thus 83 denotes 83.00 feet.

West line of NW 1/4 of Section 35, T 30N,  
R 22W is assumed as bearing North.

Know All Persons By These Presents that:

Willow-Elm, a limited partnership, whose general partner is Willow Court Development, Inc., a Minnesota corporation, owner of the following described property situated in the City of White Bear Lake, Ramsey County, Minnesota:

The North 1/2 of Lot 14, except the North 140 feet thereof, Elmwood Garden Farms No. 2, and Lots 15 and 16, except the South 450 feet thereof, Elmwood Garden Farms No. 2.

Have caused the same to be surveyed, platted, and known as WILLOW COURT, and do hereby dedicate to the public for public use forever the courts and drainage easement and avenue as shown on the plat.

Have hereunto set my hand this 12 day of December, 1978.

Signed: Willow Court Development, Inc., a Minnesota corporation, a general partner of Willow-Elm, a limited partnership.

*Thomas J. Fitzpatrick*  
Thomas J. Fitzpatrick, its President

STATE OF MINNESOTA ) S.  
COUNTY OF RAMSEY )

The foregoing instrument was acknowledged before me this 12 day of December, 1978, by Thomas J. Fitzpatrick its President of Willow Court Development, Inc., a Minnesota corporation, a general partner of Willow-Elm, a limited partnership, on behalf of the corporation.

*Jeanne E. Miller*  
Notary Public, Ramsey County, Minnesota  
My Commission Expires 6-6-81  
*Richard E. Miller*  
NOTARY PUBLIC - MINNESOTA  
RAMSEY COUNTY  
My Commission Expires June 6, 1981

I, Donald W. Schmidt, hereby certify that I have surveyed and platted the property described in the dedication of this plat as WILLOW COURT; that this plat is a correct representation of said survey; that all distances are correctly shown on the plat; that all monuments have been correctly placed in the ground as shown; that the outside boundary lines are correctly designated on the plat; and there are no wet lands, easements, or public highways other than as shown thereon.

*Donald W. Schmidt*  
Registered Land Surveyor  
Minnesota Registration No. 10459

STATE OF MINNESOTA ) S S  
COUNTY OF RAMSEY )

The Surveyor's certificate was subscribed and sworn to before me, a Notary Public, this 14 day of December, 1978.

*M. Christea*  
Notary Public, Ramsey County, Minnesota  
My commission expires Nov. 6, 1979  
NOTARY PUBLIC - MINNESOTA  
RAMSEY COUNTY  
My Commission Expires Nov. 6, 1979

Approved and accepted by the City Council of the City of White Bear Lake, Minnesota, this 20 day of December, 1978.

*Robert J. Han* Mayor  
*Raymond A. Sideraker* Clerk

No delinquent taxes and transfer entered this 22 day of December, 1978.

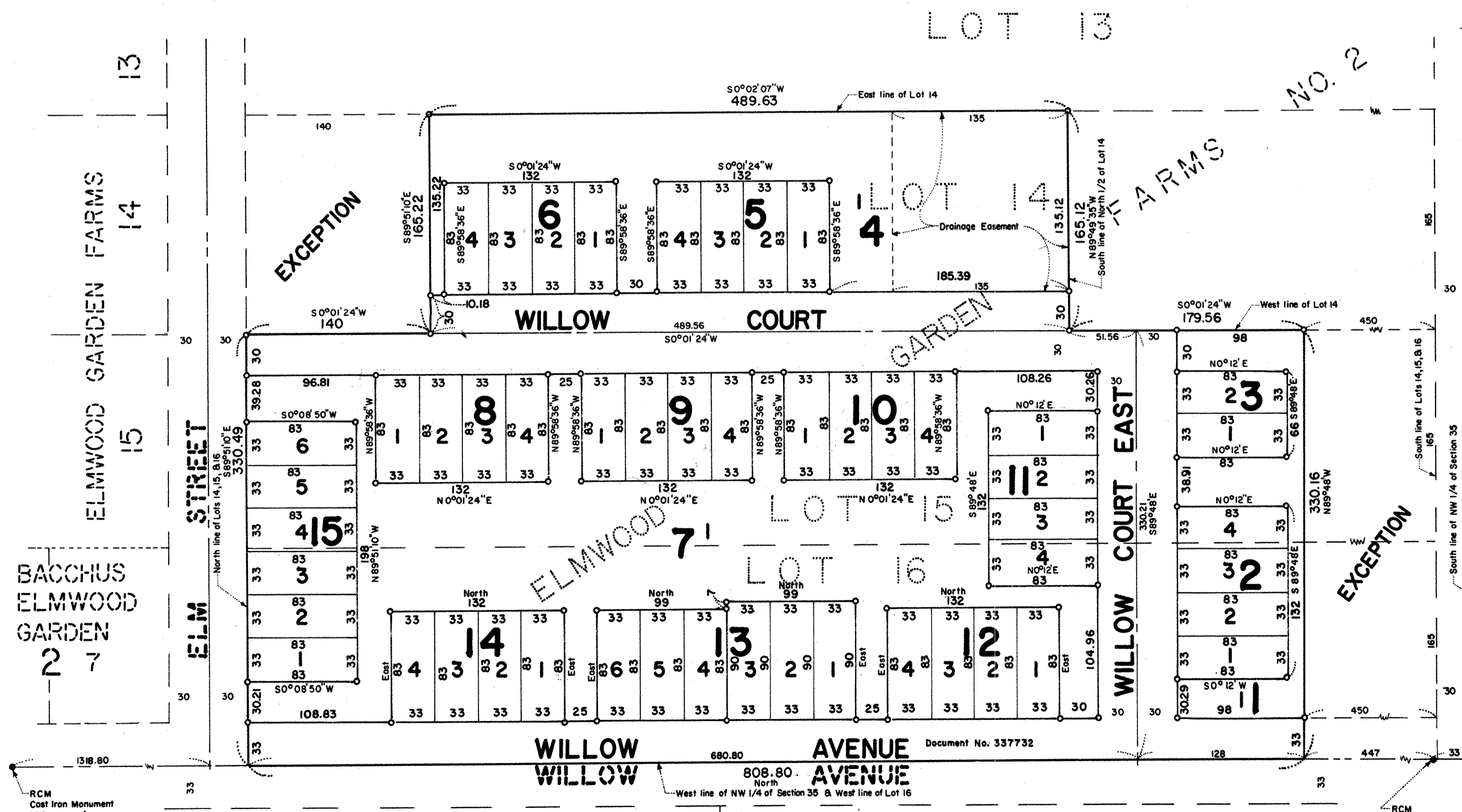
*Lawrence J. Hanna* Director  
Department of Property Taxation  
By *Dr. Webster* Deputy

Pursuant to Chapter 7, Minnesota Laws of 1976, this plat has been approved this 22 day of December, 1978.

*F. R. Kvidera*  
Acting Ramsey County Surveyor

Registrar of Titles, County of Ramsey, State of Minnesota  
I hereby certify that this plat of WILLOW COURT was filed in this office this 26 day of December, 1978 at 11:50 o'clock A.M. and was filed in Book 31 of Plats, Page 10 as Document No. 669005.

*Eugene H. Gibbons*, Registrar of Titles  
By \_\_\_\_\_ Deputy



RCM  
Cast Iron Monument  
NW corner of  
Section 35, T 30N, R 22W

West quarter corner of  
Section 35, T 30N, R 22W  
RCM  
Cast Iron Monument

INDEPENDENT SCHOOL DISTRICT NO. 624