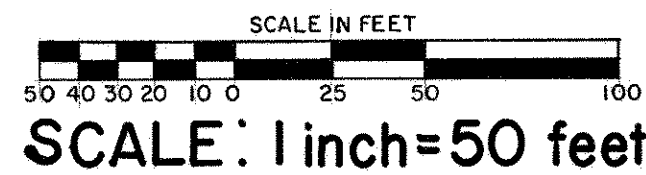


# GARDEN LANE ADDITION



CITY OF WHITE BEAR LAKE  
RAMSEY COUNTY, MINNESOTA

CHARLES O. GEORGI COMPANY  
CIVIL ENGINEERING & LAND SURVEYING

Know All Persons By These Presents that Catherine H. Chapple, widow, unmarried, owner and Pratt Construction Inc., a Minnesota corporation, purchaser by contract for deed, of the following described property situated in the City of White Bear Lake, Ramsey County, Minnesota:

Lots 10, 11 and 12, Block 2, Interlachen Gardens and Lot 2, Auditor's Subdivision No. 49

Have caused the same to be surveyed, plotted and known as GARDEN LANE ADDITION and do hereby dedicate to the public for public use forever the Street and Avenue and drainage and utility easements as shown on the plat.

Have hereunto set my hand this 16<sup>th</sup> day of June, 1978.  
Signed: Catherine H. Chapple  
Catherine H. Chapple

Have hereunto set my hand this 30<sup>th</sup> day of JUNE, 1978.  
Signed: Pratt Construction Inc., a Minnesota corporation

Leonard W. Pratt President  
Name Title

I, Charles O. Georgi, hereby certify that I have surveyed and platted the property described in the dedication of this plat as GARDEN LANE ADDITION; that this plat is a correct representation of said survey; that all distances are correctly shown on the plat; that all monuments have been correctly placed in the ground as shown; that the outside boundary lines are correctly designated on the plat; and there are no wet lands, easements or public highways other than as shown.

Charles O. Georgi  
Minnesota Registered Land Surveyor No. 3960

STATE OF MINNESOTA } S.S.  
COUNTY OF RAMSEY }

The Surveyor's certificate was subscribed and sworn to before me, a Notary Public, this 15<sup>th</sup> day of June, 1978

C. M. Christa  
Notary Public, Ramsey County, Minnesota  
C. M. CHRISTEA  
NOTARY PUBLIC - MINNESOTA  
RAMSEY COUNTY  
My Commission Expires Nov. 6, 1979

Approved and accepted by the City Council of the City of White Bear Lake, Minnesota, this 13<sup>th</sup> day of June, 1978.

Robert J. ... Mayor  
Raymond O. ... Clerk

No delinquent taxes and transfer entered this 6<sup>th</sup> day of July, 1978

Low McKenna Director  
Department of Property Taxation  
By ... Deputy

Pursuant to Chapter 7, Minnesota Laws of 1976 this plat has been approved this 6<sup>th</sup> day of July, 1978

A. R. Kvidera  
F. R. Kvidera  
Acting Ramsey County Surveyor

STATE OF Minnesota } S.S.  
COUNTY OF Washington }

The foregoing instrument was acknowledged before me this 16<sup>th</sup> day of JUNE, 1978 by Catherine H. Chapple, widow, unmarried.

W. E. Jepsen  
Notary Public, Washington County,  
My Commission Expires ...

STATE OF MINNESOTA  
COUNTY OF RAMSEY

The foregoing instrument was acknowledged before me this 30<sup>th</sup> day of June, 1978 by Leonard Pratt, its Pres of Pratt Construction Inc., a Minnesota corporation, on behalf of the corporation.

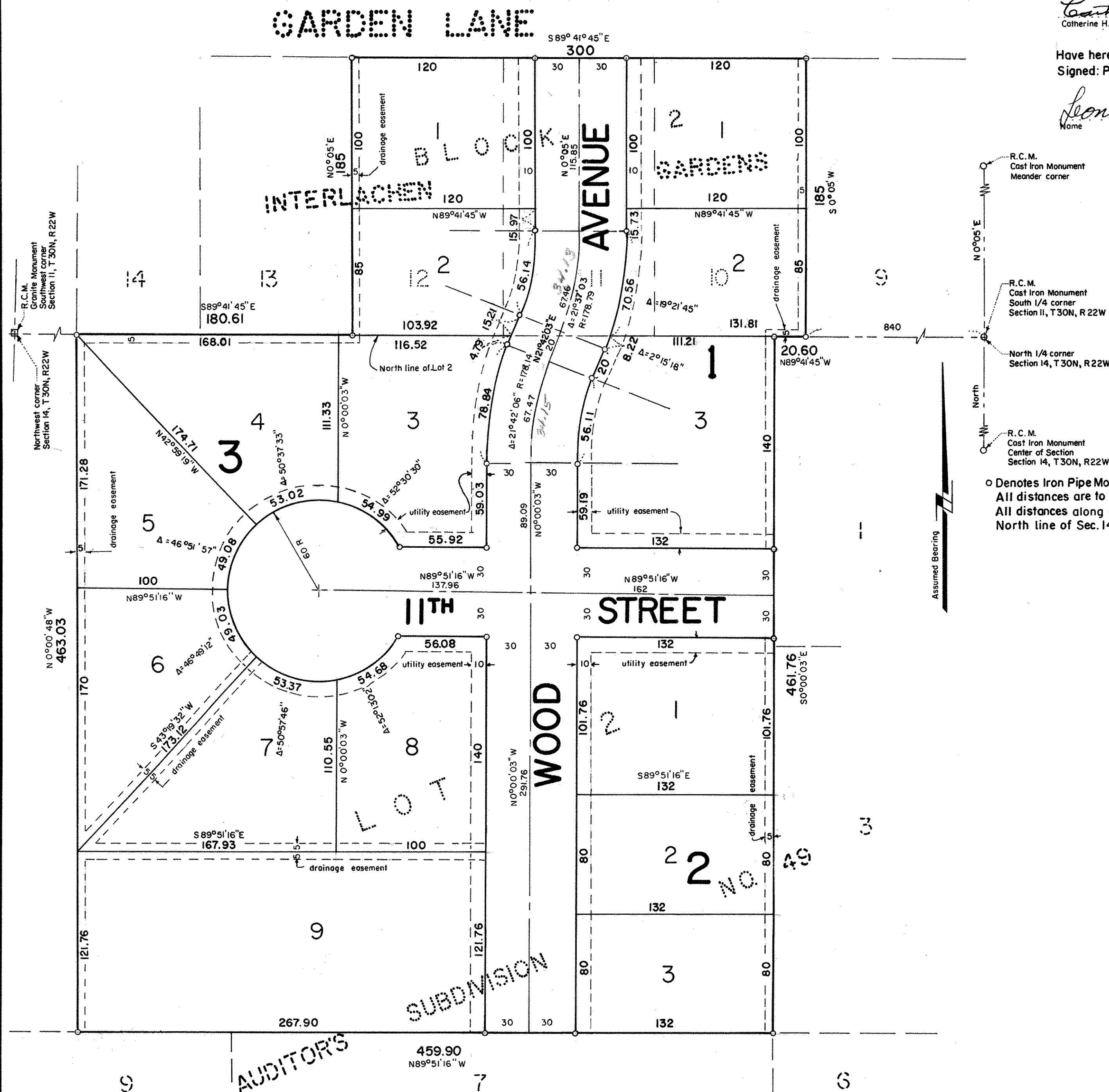
Judith H. Klink  
Notary Public, Ramsey County, Minnesota  
JUDITH H. KLINK  
NOTARY PUBLIC - MINNESOTA  
RAMSEY COUNTY  
MY COMMISSION EXPIRES JULY 10, 1983

Registrar of Titles  
County Recorder, County of Ramsey, State of Minnesota

I hereby certify that this plat of GARDEN LANE ADDITION was filed in this office this 7<sup>th</sup> day of July, 1978 at 3:41 o'clock P.M. and was filed in book 99 of plats, page 7 and that the copies were compared with the official plat and found to be true and correct copies thereof.

Eugene H. Gibbons, County Recorder, Registrar of Titles  
By ... Deputy

Abstract # 2008603



R.C.M. Cast Iron Monument Meander corner  
R.C.M. Cast Iron Monument South 1/4 corner Section II, T30N, R22W  
North 1/4 corner Section 14, T30N, R22W  
R.C.M. Cast Iron Monument Center of Section Section 14, T30N, R22W

o Denotes Iron Pipe Monument set  
All distances are to hundredths of a foot.  
All distances along curves are arc lengths.  
North line of Sec. 14 is assumed as N89°41'45" W

AUDITOR'S