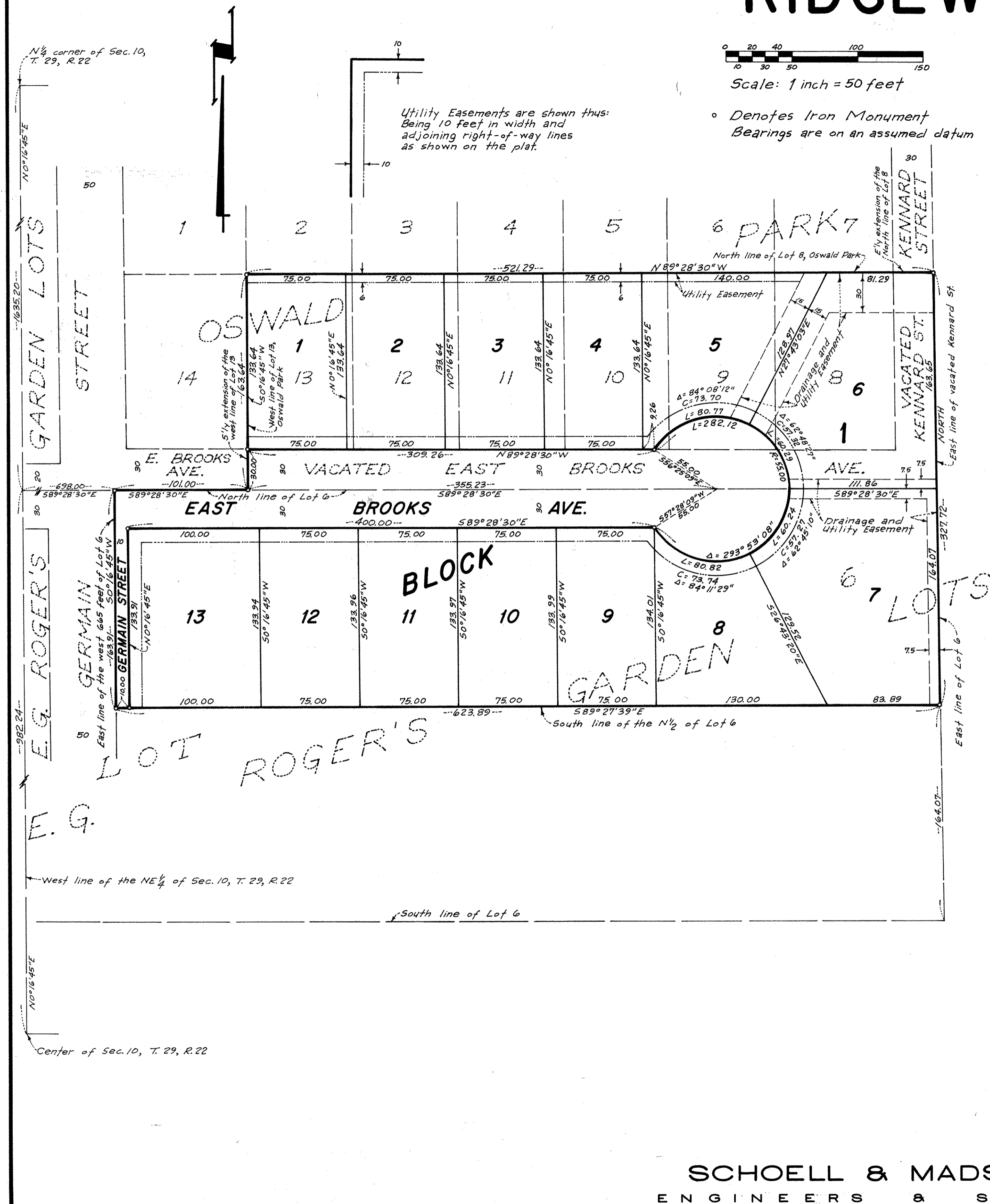


RIDGEWIND



KNOW ALL PERSONS BY THESE PRESENTS: That Rogene, Inc., a Minnesota corporation, owner of the following described property situated in the City of Maplewood, Ramsey County, Minnesota:

- Par. 1. Lots 8, 9, 10, 11, 12 and 13, Block 1, Oswald Park, according to the recorded plat thereof.
- Par. 2. That part of the North Half of Lot 6, E. G. Roger's Garden Lots, according to the recorded plat thereof, which lies easterly of the Westerly 665.00 feet of said Lot 6.
- Par. 3. Those parts of vacated Kennard Street and vacated East Brooks Avenue as dedicated in Oswald Park, according to the recorded plat thereof, lying south of the easterly extension of the north line of Lot 8, Block 1, in said plat, and which lie east of the southerly extension of the west line of Lot 13, Block 1, in said plat.

Has caused the same to be surveyed, platted and known as RIDGEWIND and does hereby dedicate to the public for public use forever the street, avenue, the easements for utility purposes and the easements for drainage and utility purposes as shown on the plat.

In witness whereof said Rogene, Inc., a Minnesota corporation, has caused these presents to be signed by its proper officers this 17 day of April, 1978

ROGENE, INC.
Roger K. Gehrt Pres.
Eugene E. Schultz Secy.-Treas.

STATE OF MINNESOTA
 COUNTY OF WASH
 The foregoing instrument was acknowledged before me this 18 day of April, 1978, by Roger K. Gehrt, President, and Eugene E. Schultz, Secretary-Treasurer, of Rogene, Inc., a Minnesota corporation, on behalf of the corporation.

Arnold Kaneko
 Notary Public, Wash County, Minnesota
 My Commission Expires 1-14-83

I, Harold E. Dahlin, hereby certify that I have surveyed and platted the property described in the dedication of this plat as RIDGEWIND; that this plat is a correct representation of said survey; that all distances are correctly shown on the plat; that all monuments have been correctly placed in the ground as shown; that the outside boundary lines are correctly designated on the plat; and that there are no wet lands or public highways other than as shown thereon.

Harold E. Dahlin
 Harold E. Dahlin
 Land Surveyor, Minn. Reg. No. 8414

STATE OF MINNESOTA
 COUNTY OF HENNEPIN
 The Surveyor's certificate was subscribed and sworn to before me, a Notary Public, this 10TH day of MARCH, 1978.

Theodore D. Kemna
 Theodore D. Kemna
 Notary Public, Hennepin County, Minnesota
 My Commission Expires January 27, 1979

CITY OF MAPLEWOOD, MINNESOTA.
 The plat of RIDGEWIND was approved and accepted by the City Council of the City of Maplewood, Minnesota, at a regular meeting thereof held this 4th day of May, A. D. 1978.

By *John Gieson* Mayor
 By *Liville C. Kucelin* Clerk

No delinquent taxes and transfer entered this 15th day of May, 1978.
 By *Low McKeena* Director
 Department of Property Taxation
 By *Patney* Deputy

COUNTY RECORDER, COUNTY OF RAMSEY, STATE OF MINNESOTA.
 I hereby certify that this plat of RIDGEWIND was filed in this office this _____ day of _____, 19____, at _____ o'clock _____ M. and was filed in Book _____ of Plats, Page _____ and that the copies were compared with the official plat and found to be true and correct copies thereof.
 By _____ Deputy
 Eugene H. Gibbons County Recorder

Pursuant to Chapter 7, Minnesota Laws of 1976, this plat has been approved this 15TH day of May, 1978.

F. R. Kvidera
 F. R. Kvidera
 Acting Ramsey County Surveyor