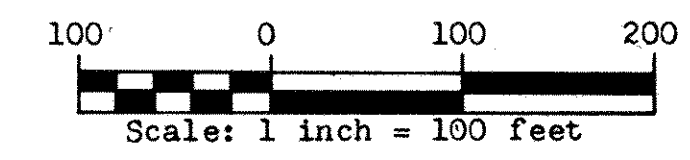
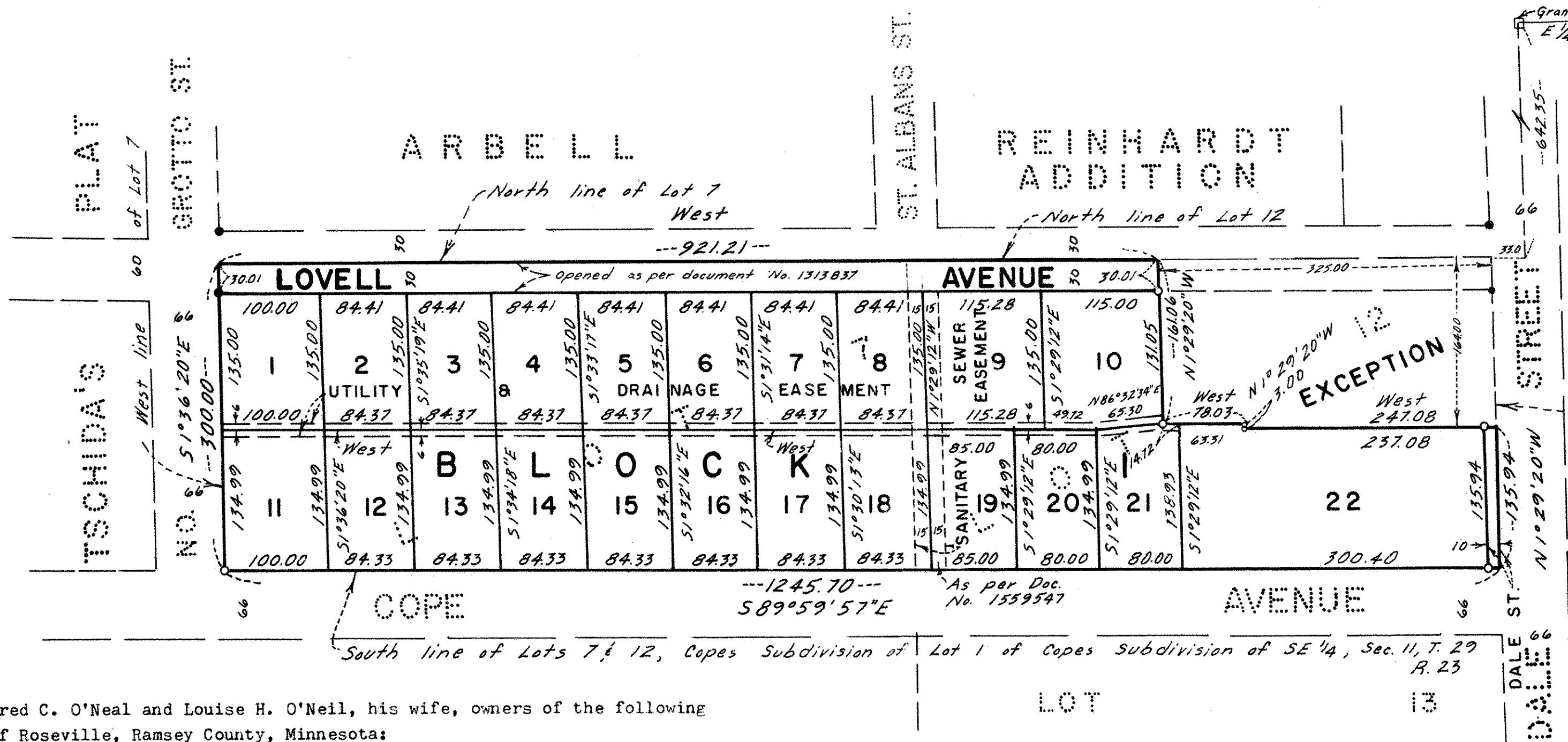


# O'NEIL'S ADDITION

CITY OF ROSEVILLE COUNTY OF RAMSEY

LOT SURVEYS COMPANY  
LAND SURVEYORS



Bearings shown are on an assumed datum August, 1977  
● Indicates Iron Monument Found  
○ Indicates Iron Monument Set

Know All Persons By These Presents that Fred C. O'Neal and Louise H. O'Neil, his wife, owners of the following described property situate in the City of Roseville, Ramsey County, Minnesota:  
Lots 7 and 12, Copes Subdivision of Lot 1 of Copes Subdivision of the Southeast 1/4 of Section 11, Township 29, Range 23, according to the plat thereof on file and of record in the office of the County Recorder in and for said County and State, except the following described tract. The North 164.00 feet of the East 325.00 feet, except the South 3.00 feet of the West 78 feet thereof of said Lot 12.

Have caused the same to be surveyed, platted and known as O'NEIL'S ADDITION and do hereby dedicate to the public for public use forever the Avenue, Street and Utility and Drainage Easements as shown on the plat. In witness whereof said Fred C. O'Neil and Louise H. O'Neil, his wife, have hereunto set their hands and seals this 3rd day of November A.D., 1977.

Signed:  
Fred C. O'Neil  
Fred C. O'Neil  
Louise H. O'Neil  
Louise H. O'Neil

State of Minnesota  
County of Ramsey The foregoing instrument was acknowledged before me this 3rd day of November A.D., 1977, by Fred C. O'Neil and Louise H. O'Neil, his wife.

C. M. Christea  
Notary Public, Ramsey County, Minnesota  
My Commission Expires Nov. 6, 1979

I, Raymond A. Prasch, hereby certify that I have surveyed and platted the property described in the dedication of this plat as O'NEIL'S ADDITION that this plat is a correct representation of said survey; that all distances are correctly shown on the plat; that all monuments have been correctly placed in the ground as shown; that the outside boundary lines are correctly designated on the plat; and there are no wet lands, easements or public highways other than as shown thereon.  
Raymond A. Prasch  
Minnesota Registration No. 6743

State of Minnesota  
County of Hennepin The Surveyor's certificate was subscribed and sworn to before me, a Notary Public, this 17th day of October A.D., 1977.

Gerald T. Coyne  
Gerald T. Coyne, Notary Public, Henn. Co., Minn.  
My Commission expires September 14, 1983

Approved and accepted by the City Council of the City of Roseville, this 17th day of October 1977.

Jane Demos Mayor  
James J. Anderson Manager  
No delinquent taxes and transfer entered this 23rd day of March, 1978.

Law McHanna Director  
Department of Property Taxation  
By V. Faus Deputy

Pursuant to Chapter 7, Minnesota Laws of 1976, this plat has been approved this 28th day of March 1978.

By F. R. Kvidera  
F. R. KVIDERA, Acting County Surveyor

COUNTY RECORDER, COUNTY OF RAMSEY, STATE OF MINNESOTA  
I hereby certify that this plat of O'NEIL'S ADDITION was filed in this office this \_\_\_\_\_ day of \_\_\_\_\_, 1977, at \_\_\_\_\_ o'clock, M. and was filed in Book \_\_\_\_\_ of Plats, Page \_\_\_\_\_ and that the copies were compared with the Official Plat and found to be true and correct copies thereof.

Eugene H. Gibbons County Recorder  
By \_\_\_\_\_ Deputy

Abstract #1998512